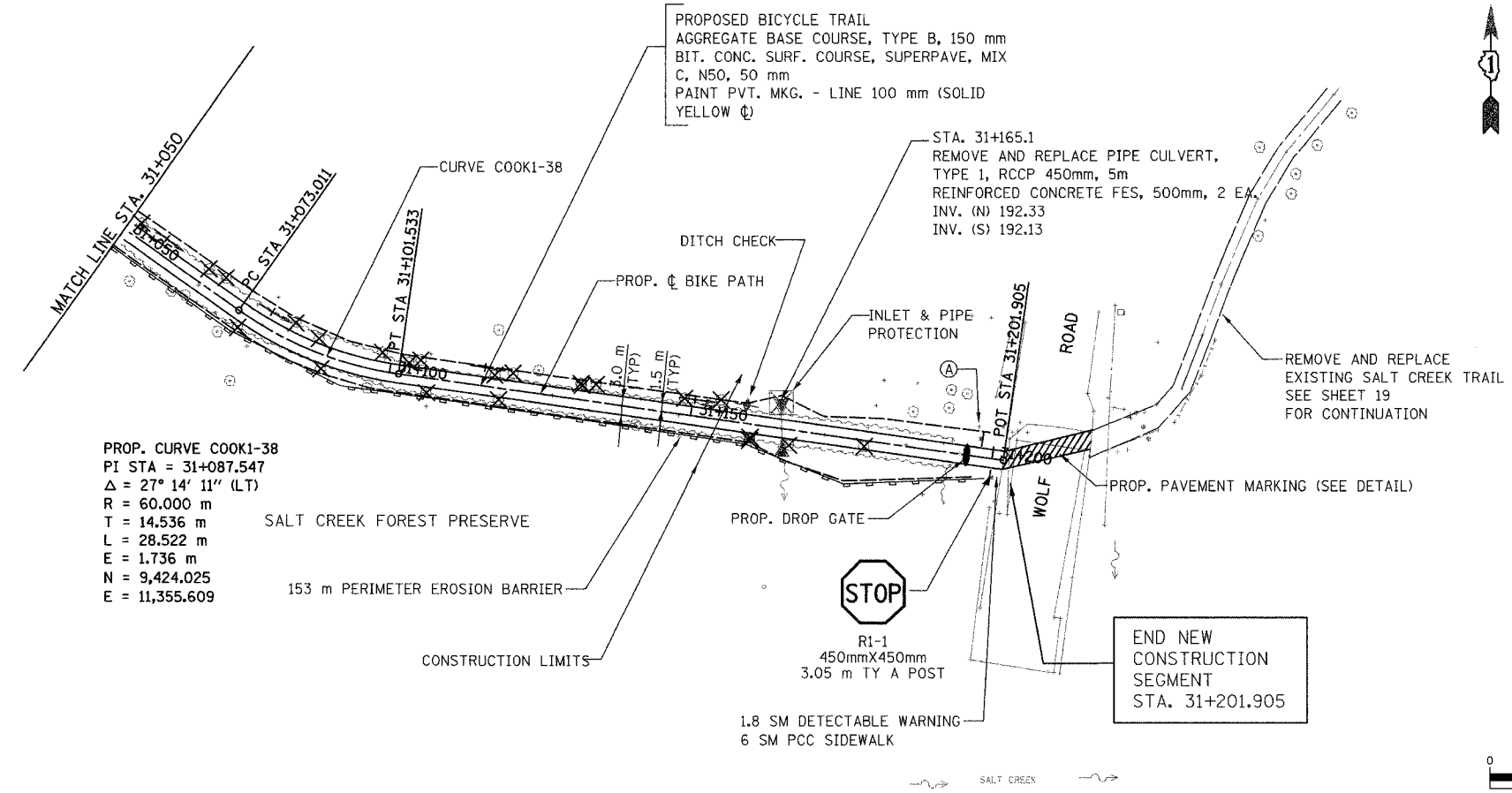


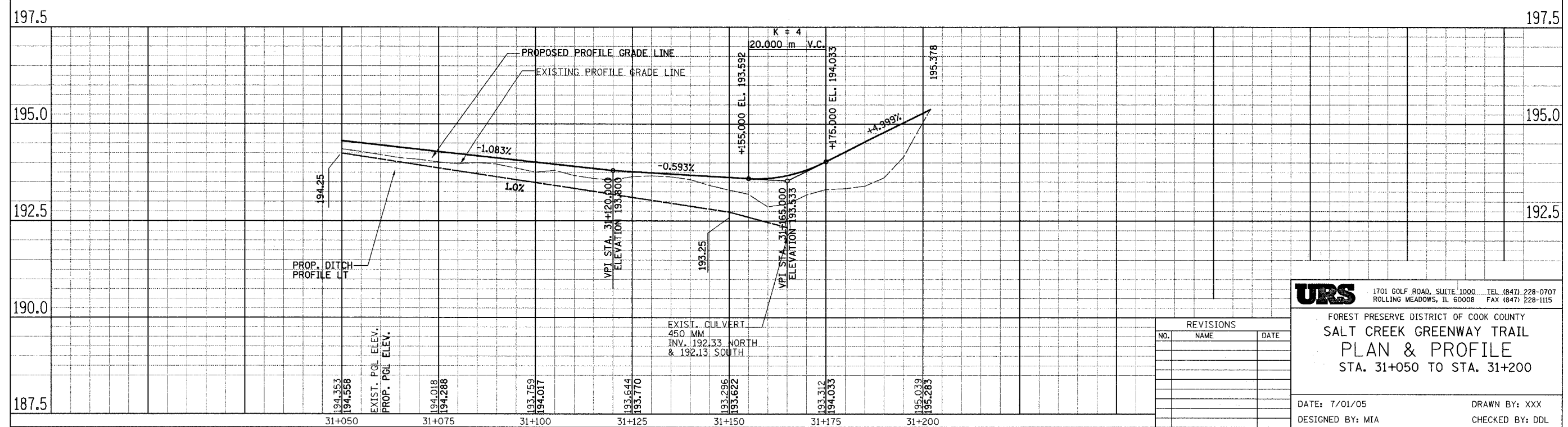
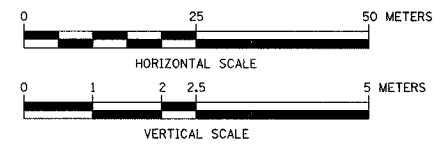
SECTION	COUNTY	TOTAL SHEETS	SHEET NO.
05-F3000-01-BT	COOK	92	16
STA.	TO STA.		
IDOT PROJECT NO. CMM-8003(498)			
SALT CREEK GREENWAY TRAIL			
CONTRACT NO. 83667			



PROP. CURVE COOK1-38  
 PI STA = 31+087.547  
 $\Delta = 27^\circ 14' 11''$  (LT)  
 R = 60.000 m  
 T = 14.536 m  
 L = 28.522 m  
 E = 1.736 m  
 N = 9,424.025  
 E = 11,355.609



A SIGN PANEL, TYPE 1 WITH ALUMINUM SIGN POST, SPECIAL (SEE DETAIL)



REVISIONS		
NO.	NAME	DATE

**URS** 1701 GOLF ROAD, SUITE 1000 TEL (847) 228-0707  
 ROLLING MEADOWS, IL 60008 FAX (847) 228-1115

FOREST PRESERVE DISTRICT OF COOK COUNTY  
**SALT CREEK GREENWAY TRAIL**  
**PLAN & PROFILE**  
 STA. 31+050 TO STA. 31+200

DATE: 7/01/05 DRAWN BY: XXX  
 DESIGNED BY: MIA CHECKED BY: DDL