

PROP. CURVE 138  
 PI STA = 37+241.196  
 $\Delta = 76^\circ 51' 15''$  (LT)  
 R = 30.000 m  
 T = 23.801 m  
 L = 40.241 m  
 E = 8.295 m

PROP. CURVE 139  
 PI STA = 37+283.125  
 $\Delta = 73^\circ 34' 11''$  (RT)  
 R = 30.000 m  
 T = 22.431 m  
 L = 38.521 m  
 E = 7.458 m

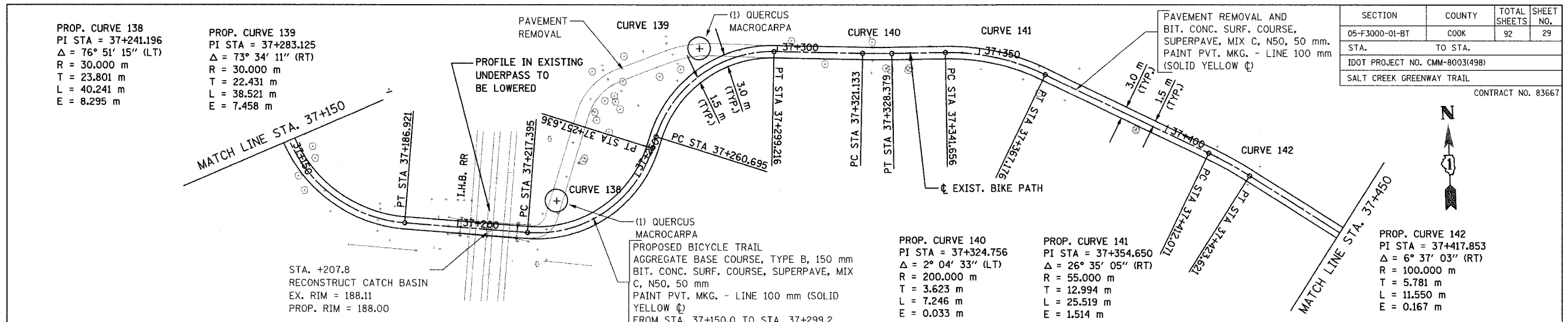
PROP. CURVE 140  
 PI STA = 37+324.756  
 $\Delta = 2^\circ 04' 33''$  (LT)  
 R = 200.000 m  
 T = 3.623 m  
 L = 7.246 m  
 E = 0.033 m

PROP. CURVE 141  
 PI STA = 37+354.650  
 $\Delta = 26^\circ 35' 05''$  (RT)  
 R = 55.000 m  
 T = 12.994 m  
 L = 25.519 m  
 E = 1.514 m

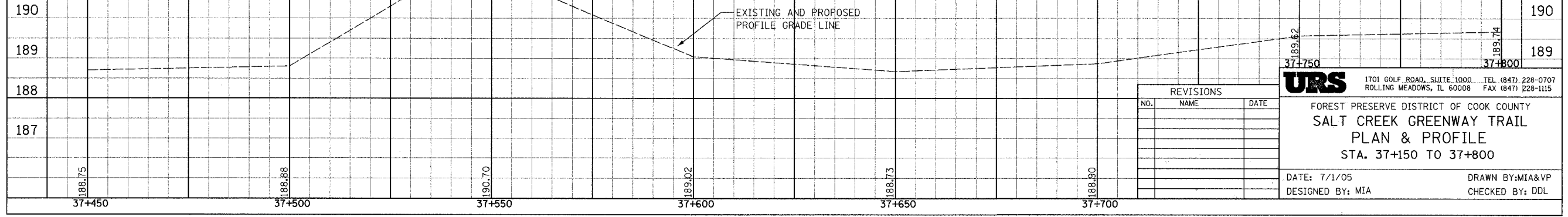
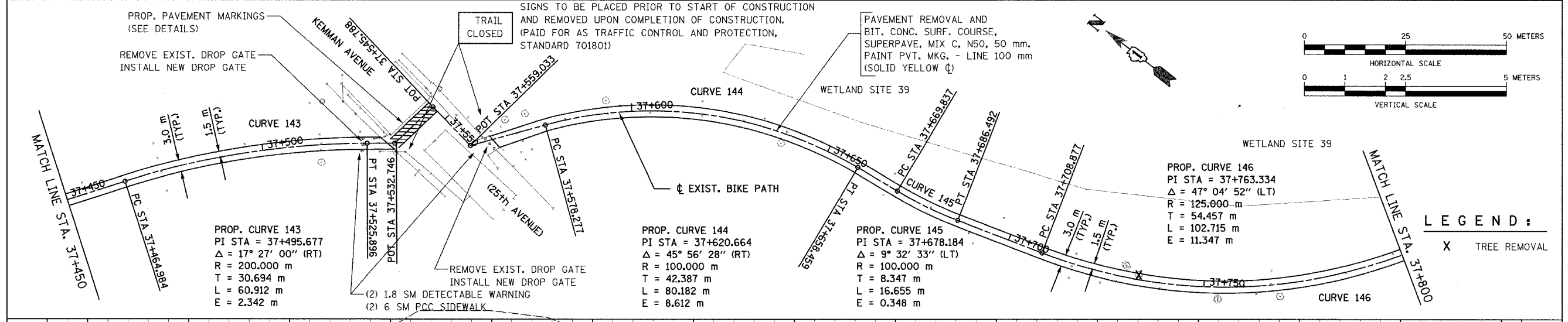
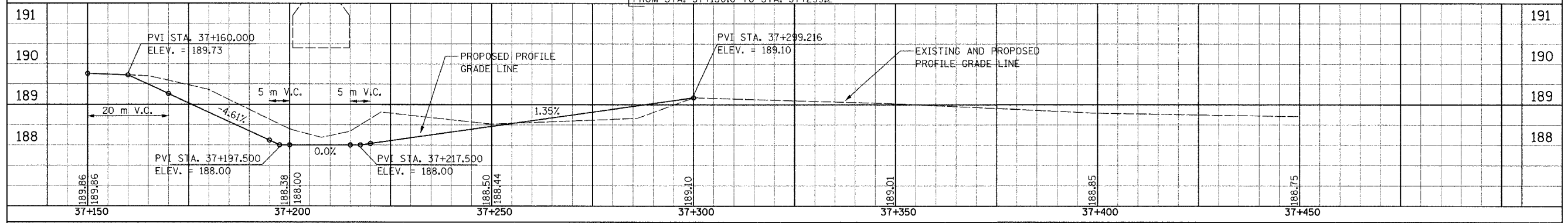
PROP. CURVE 142  
 PI STA = 37+417.853  
 $\Delta = 6^\circ 37' 03''$  (RT)  
 R = 100.000 m  
 T = 5.781 m  
 L = 11.550 m  
 E = 0.167 m

FINAL SURVEY	BY	DATE
SURVEY PLOTTED		
NOTE BOOK TEMPLATE		
AREAS CHECKED		
AREAS CHECKED		

ORIGINAL SURVEY	BY	DATE
SURVEY PLOTTED		
NOTE BOOK TEMPLATE		
AREAS CHECKED		
AREAS CHECKED		



SECTION	COUNTY	TOTAL SHEETS	SHEET NO.
05-F3000-01-BT	COOK	92	29
STA.	TO STA.		
IDOT PROJECT NO. CMM-8003(498)			
SALT CREEK GREENWAY TRAIL			
CONTRACT NO. 83667			



REVISIONS		
NO.	NAME	DATE

**URS** 1701 GOLF ROAD, SUITE 1000 TEL (847) 228-0707  
 ROLLING MEADOWS, IL 60008 FAX (847) 228-1115

FOREST PRESERVE DISTRICT OF COOK COUNTY  
**SALT CREEK GREENWAY TRAIL**  
**PLAN & PROFILE**  
 STA. 37+150 TO 37+800

DATE: 7/1/05 DRAWN BY: MIA&VP  
 DESIGNED BY: MIA CHECKED BY: DDL