

PROP. CURVE LYONS-10
 PI STA = 47+547.558
 $\Delta = 18^\circ 03' 39''$ (LT)
 R = 60.000 m
 T = 9.536 m
 L = 18.913 m
 E = 0.753 m
 N = 3,584.550
 E = 3,026.689

PROP. CURVE LYONS-11
 PI STA = 47+630.874
 $\Delta = 5^\circ 34' 42''$ (LT)
 R = 100.000 m
 T = 4.872 m
 L = 9.736 m
 E = 0.119 m
 N = 3,501.085
 E = 3,025.374

PROP. CURVE LYONS-12
 PI STA = 47+655.878
 $\Delta = 22^\circ 34' 49''$ (RT)
 R = 50.000 m
 T = 9.982 m
 L = 19.705 m
 E = 0.987 m
 N = 3,476.157
 E = 3,027.412

PROP. CURVE LYONS-13
 PI STA = 47+690.104
 $\Delta = 33^\circ 19' 49''$ (LT)
 R = 30.000 m
 T = 8.981 m
 L = 17.452 m
 E = 1.315 m
 N = 3,443.342
 E = 3,016.810

PROP. CURVE LYONS-14
 PI STA = 47+713.471
 $\Delta = 21^\circ 11' 07''$ (RT)
 R = 60.000 m
 T = 11.221 m
 L = 22.185 m
 E = 1.040 m
 N = 3,420.326
 E = 3,023.161

PROP. CURVE LYONS-15
 PI STA = 47+741.591
 $\Delta = 20^\circ 44' 31''$ (LT)
 R = 50.000 m
 T = 9.151 m
 L = 18.101 m
 E = 0.830 m
 N = 3,392.093
 E = 3,020.313

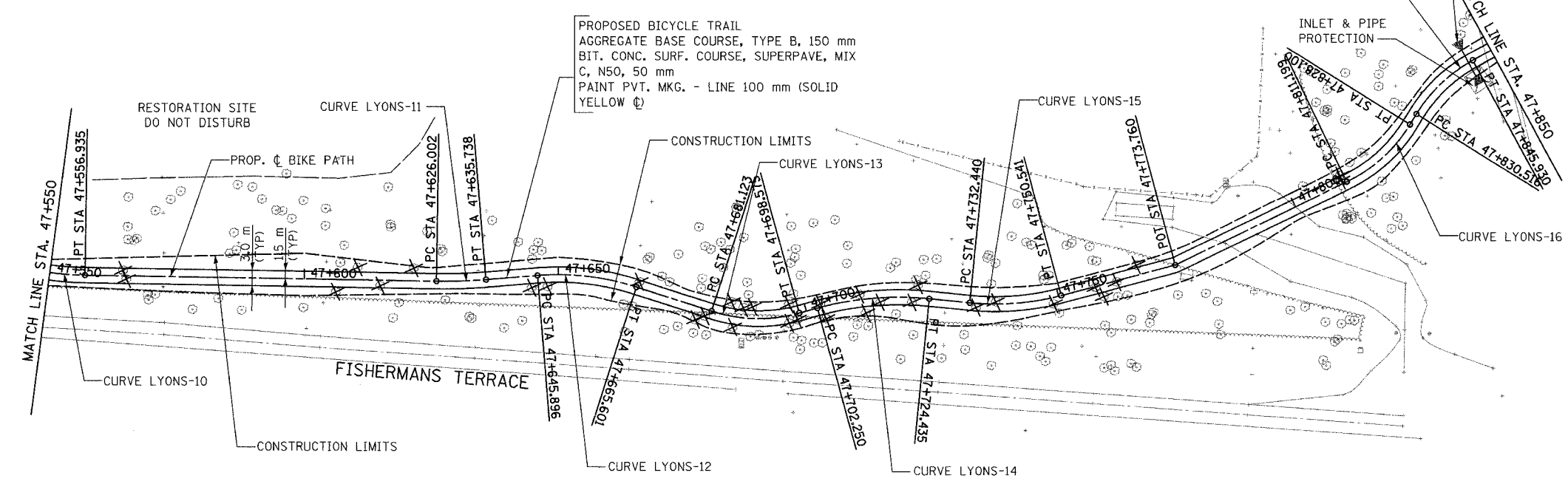
PROP. CURVE LYONS-16
 PI STA = 47+819.880
 $\Delta = 32^\circ 16' 42''$ (LT)
 R = 30.000 m
 T = 8.681 m
 L = 16.901 m
 E = 1.231 m
 N = 3,319.333
 E = 3,048.819

PROP. CURVE LYONS-17
 PI STA = 47+838.397
 $\Delta = 29^\circ 26' 21''$ (RT)
 R = 30.000 m
 T = 7.881 m
 L = 15.414 m
 E = 1.018 m
 N = 3,309.322
 E = 3,064.944

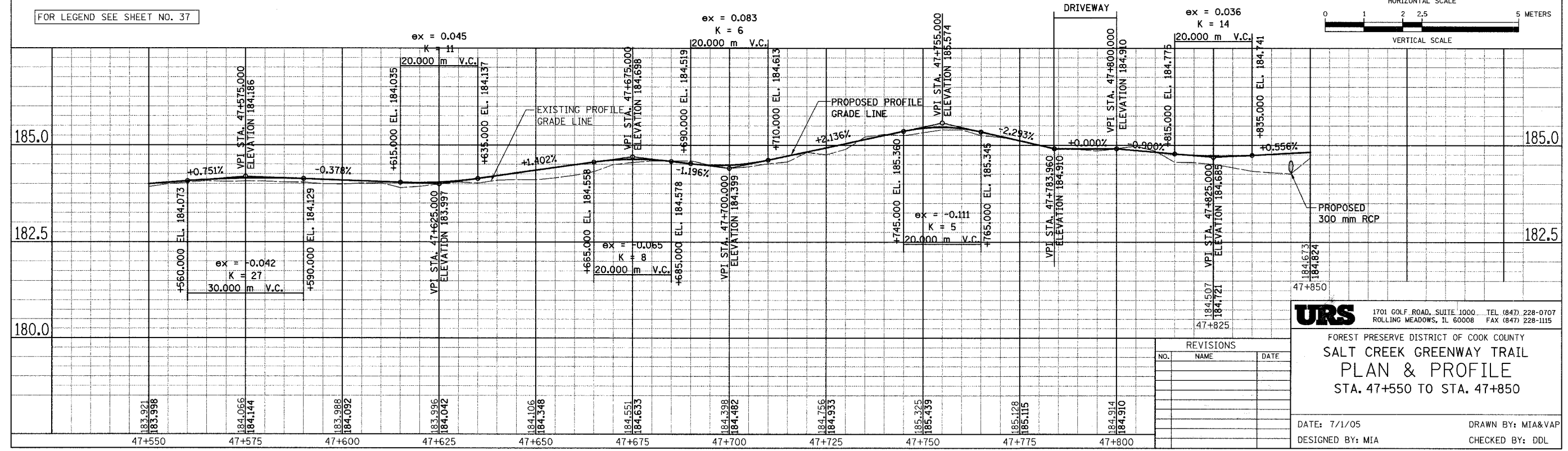
SECTION	COUNTY	TOTAL SHEETS	SHEET NO.
05-F3000-01-B1	COOK	92	39
STA. TO STA.			
IDOT PROJECT NO. CMM-8003(498)			
SALT CREEK GREENWAY TRAIL			

CONTRACT NO. 83667

STA. 47+845
 PIPE CULVERT, TYPE 1, RCCP, 300 mm, 5 m
 REINFORCED CONCRETE FES, 300 mm, 2 EA.
 INV. = 184.25 (N)
 INV. = 184.35 (S)



FOR LEGEND SEE SHEET NO. 37



URS 1701 GOLF ROAD, SUITE 1000 TEL (847) 228-0707
 ROLLING MEADOWS, IL 60008 FAX (847) 228-1115

FOREST PRESERVE DISTRICT OF COOK COUNTY
**SALT CREEK GREENWAY TRAIL
 PLAN & PROFILE**
 STA. 47+550 TO STA. 47+850

REVISIONS		
NO.	NAME	DATE

DATE: 7/1/05
 DESIGNED BY: MIA
 DRAWN BY: MIA&VAP
 CHECKED BY: DDL