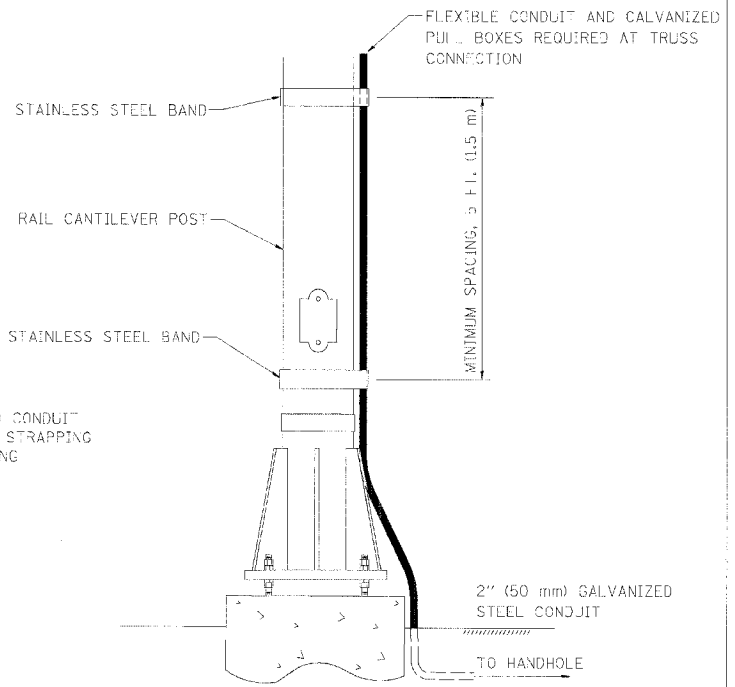
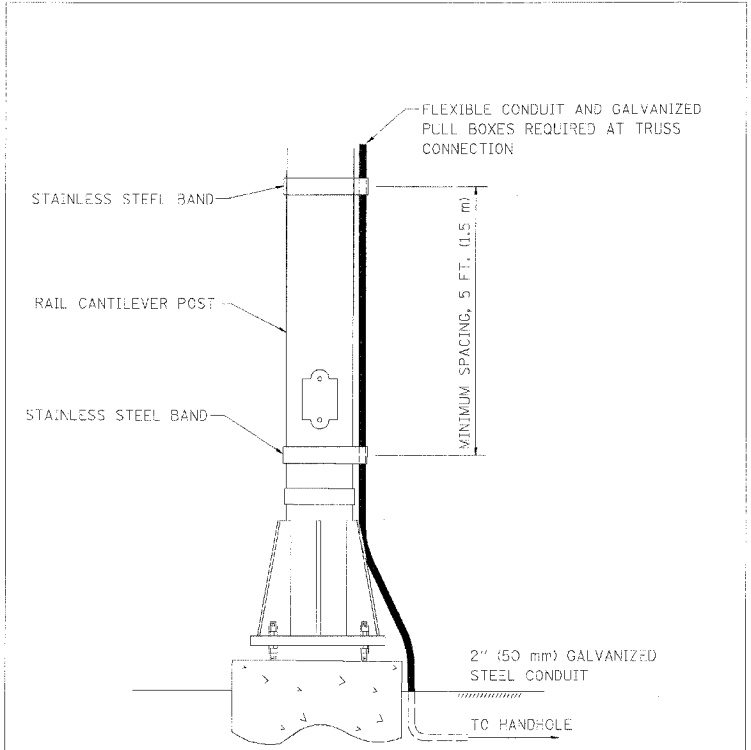


RAILROAD CANTILEVER SIGNAL HEAD MOUNTING

10/18/2002
c:\projects\83803\83803.dgn



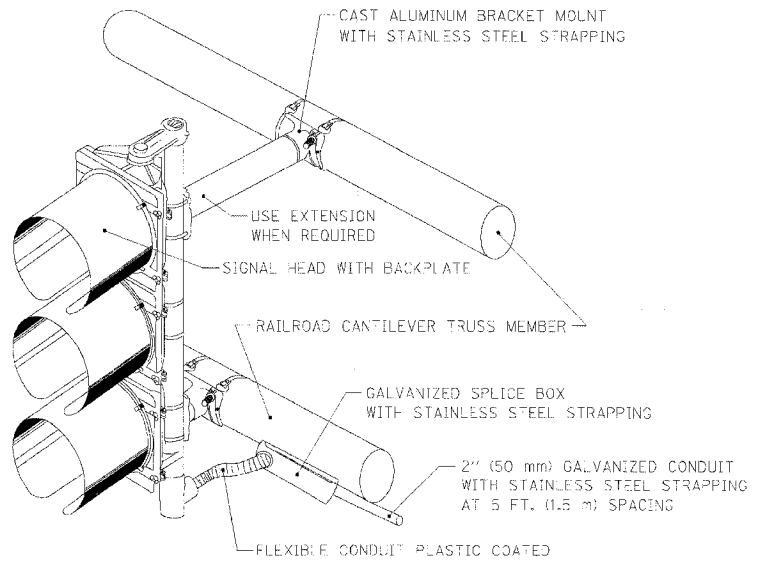
SIGNAL CONDUIT CONNECTION TO RAIL CANTILEVER DETAIL



NOTE: USE NONCONDUCTIVE SPACERS BETWEEN THE TRAFFIC SIGNAL EQUIPMENT AND THE RAILROAD CANTILEVER TO PREVENT DISSIMILAR METAL CORROSION.

SIGNAL CONDUIT CONNECTION TO RAIL CANTILEVER DETAIL

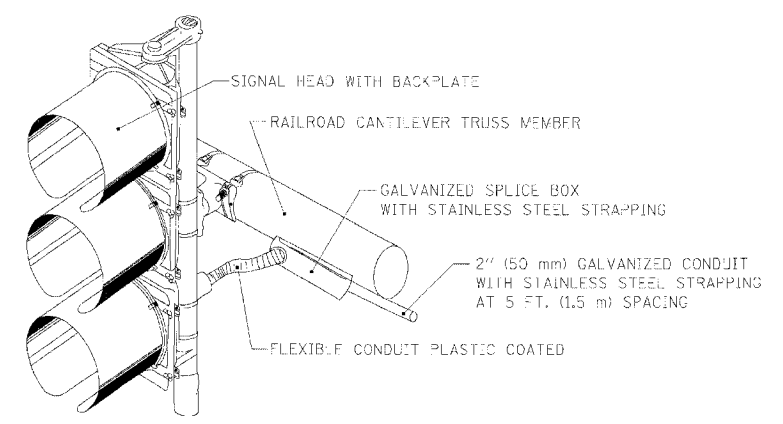
10/18/2002
c:\projects\83803\83803.dgn



NOTE: USE NONCONDUCTIVE SPACERS BETWEEN THE TRAFFIC SIGNAL EQUIPMENT AND THE RAILROAD CANTILEVER TO PREVENT DISSIMILAR METAL CORROSION.

RAILROAD CANTILEVER SIGNAL HEAD MOUNTING

10/18/2002
c:\projects\83803\83803.dgn



NOTE: USE NONCONDUCTIVE SPACERS BETWEEN THE TRAFFIC SIGNAL EQUIPMENT AND THE RAILROAD CANTILEVER TO PREVENT DISSIMILAR METAL CORROSION.

RAILROAD CANTILEVER SIGNAL HEAD MOUNTING

10/18/2002
c:\projects\83803\83803.dgn

REVISIONS	
NAME	DATE

ILLINOIS DEPARTMENT OF TRANSPORTATION

RAILROAD CANTILEVER SIGNAL HEAD MOUNTING DETAIL

SCALE: VERT. NONE
HORIZ. NONE

DRAWN BY
CHECKED BY