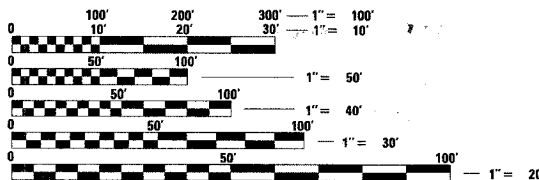


INDEX OF SHEETS

- 1 TITLE SHEET
- 2 SUMMARY OF QUANTITIES
- 3-6 STANDARD TRAFFIC SIGNAL DESIGN DETAILS
- 7-24 TRAFFIC SIGNAL MODIFICATION PLANS
CABLE PLANS, PHASE DESIGNATION DIAGRAMS,
AND SCHEDULE OF QUANTITIES
 - 7-8 KIRK RD @ PINE ST
 - 9-10 KIRK RD @ WILSON ST
 - 11-12 KIRK RD @ HUBBARD AVE
 - 13-14 KIRK RD @ FABYAN PKWY
 - 15-16 KIRK RD @ CHERRY LN
 - 17-18 KIRK RD @ IL RTE 38
 - 19-20 KIRK RD @ DIVISION ST
 - 21-22 KIRK RD @ TYLER RD
 - 23-24 KIRK RD @ OHIO AVE/DUKANE DR
- 25-31 INTERCONNECT PLANS
- 32 INTERCONNECT SCHEMATIC
- 33 VIDEO TRANSMISSION SYSTEM SCHEMATIC

STANDARD DRAWINGS

- 701006-02 Off-Rd Opr. 2L, 2W, 4.5m (15') to 600mm (24") From Pmnt Edge
- 701011-01 Off-Rd Moving Opr. 2L, 2W Day Only
- 701101-01 Off-Rd Opr., Mul tllane, 4.5m (15') to 600mm (24") From Pavement Edge
- 701301-02 Lane Closure 2L, 2W Short Time Opr.
- 701701-04 Urban Lane Closure, Mul tllane Intersecton
- 702001-05 Traffic Control Devices
 - 814001 Concrete Handholes
 - 814006 Double Handholes
 - 857001 Standard Phase Deslgnatt on Diagrams and Phase Sequences
 - 878001-03 Concrete Foundati on Details
 - 880006 Traffic Signal Mounting Details



FULL SIZE PLANS HAVE BEEN PREPARED USING STANDARD ENGINEERING SCALES. REDUCED SIZED PLANS WILL NOT CONFORM TO STANDARD SCALES. IN MAKING MEASUREMENTS ON REDUCED PLANS, THE ABOVE SCALES MAY BE USED.

CONTRACT NO. 83808

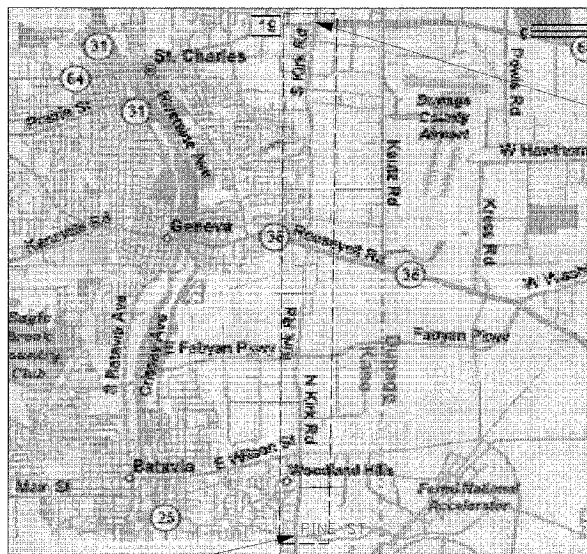
STATE OF ILLINOIS
DEPARTMENT OF TRANSPORTATION
DIVISION OF HIGHWAYS

**PLANS FOR PROPOSED
TRAFFIC SIGNAL INTERCONNECT**

DISTRICT 1
CONGESTION MITIGATION AIR QUALITY

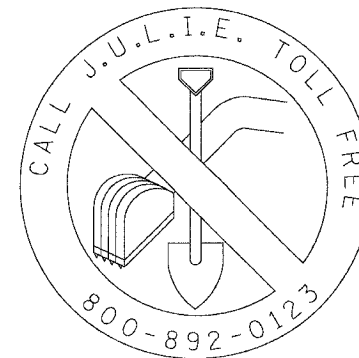
F.A.P. 360 KIRK ROAD (C.H. 77)
FROM PINE STREET TO IL RTE 64

FEDERAL PROJECT NO.: CMF-0360(009)
SECTION 03-00320-00-TL
KANE COUNTY
JOB NO: C-91-113-04



PROJECT BEGINS
KIRK ROAD AT
PINE STREET

LOCATION MAP
POSTED SPEED = 45 MPH
GROSS LENGTH = 5.60 MILES
NET LENGTH = 5.60 MILES



48 - HOURS BEFORE DIGGING

PROJECT ENDS
KIRK ROAD AT
IL RTE 64

Professional Engineer Seal for Dan M. Williams, No. 031-000000, State of Illinois, dated 7/19/05.

EXPIRES 11/30/05

F.A.P. RTF.	SECTION	COUNTY	TOTAL SHEETS	SHEET NO.
360	03-00320-00-TL	KANE	33	1

CONTRACT NO. 83808



LOCATION OF SECTION INDICATED THUS: -

STATE OF ILLINOIS
DEPARTMENT OF TRANSPORTATION
DIVISION OF HIGHWAYS

SUBMITTED July 20 20 05
Carl Schuler
LOCAL AGENCY OFFICIAL

July 20 20 05
Dina O'Keefe
DEPUTY DIRECTOR OF HIGHWAYS, REGION ENGINEER

July 20 20 05
Chapman
BUREAU/ CHIEF OF LOCAL ROADS AND STREETS

**PRINTED BY THE AUTHORITY
OF THE STATE OF ILLINOIS**

FEDERAL AID COORDINATOR: PHIL MARCYN 847-705-4189