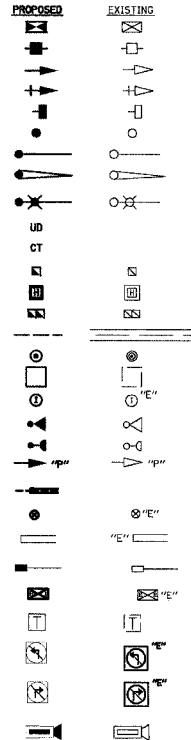
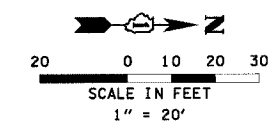


**TRAFFIC SIGNAL LEGEND**

- CONTROLLER
- SERVICE INSTALLATION
- SIGNAL HEAD
- SIGNAL HEAD WITH BACKPLATE
- SIGNAL HEAD, PEDESTRIAN
- SIGNAL POST
- MAST ARM ASSEMBLY AND POLE, STEEL
- MAST ARM ASSEMBLY AND POLE, ALUMINUM
- COMBINATION MAST ARM ASSEMBLY AND POLE, STEEL WITH LUMINAIRE
- UNIT DUCT
- COMMON TRENCH
- HANDHOLE
- HEAVY DUTY HANDHOLE
- DOUBLE HANDHOLE
- G.S. CONDUIT IN TRENCH (T) OR PUSHED (P)
- PEDESTRIAN PUSHBUTTON DETECTOR
- DETECTOR LOOP
- CAST IRON JUNCTION BOX
- EMERGENCY VEHICLE LIGHT DETECTOR
- CONFIRMATION BEACON
- SIGNAL HEAD OPTICALLY PROGRAMMED
- CONDUIT SPLICE
- WOOD POLE
- RACEWAY FOR MAGNETIC DETECTOR, TYPE I OR TYPE II
- VEHICLE DETECTOR, NON COMPENSATED MAGNETIC TYPE
- RAILROAD CONTROL CABINET
- TELEPHONE CONNECTION
- ILLUMINATED SIGN "NO LEFT TURN"
- ILLUMINATED SIGN "NO RIGHT TURN"
- PAN/TILT/ZOOM CAMERA



F.A.P. RTE.	SECTION	COUNTY	TOTAL SHEETS	SHEET NO.
360 03-00320-00-TL		KANE	33	15
STA.		TO STA.		
FED. ROAD DIST. NO.		ILLINOIS FED. AID PROJECT		
CONTRACT NO. 83808				

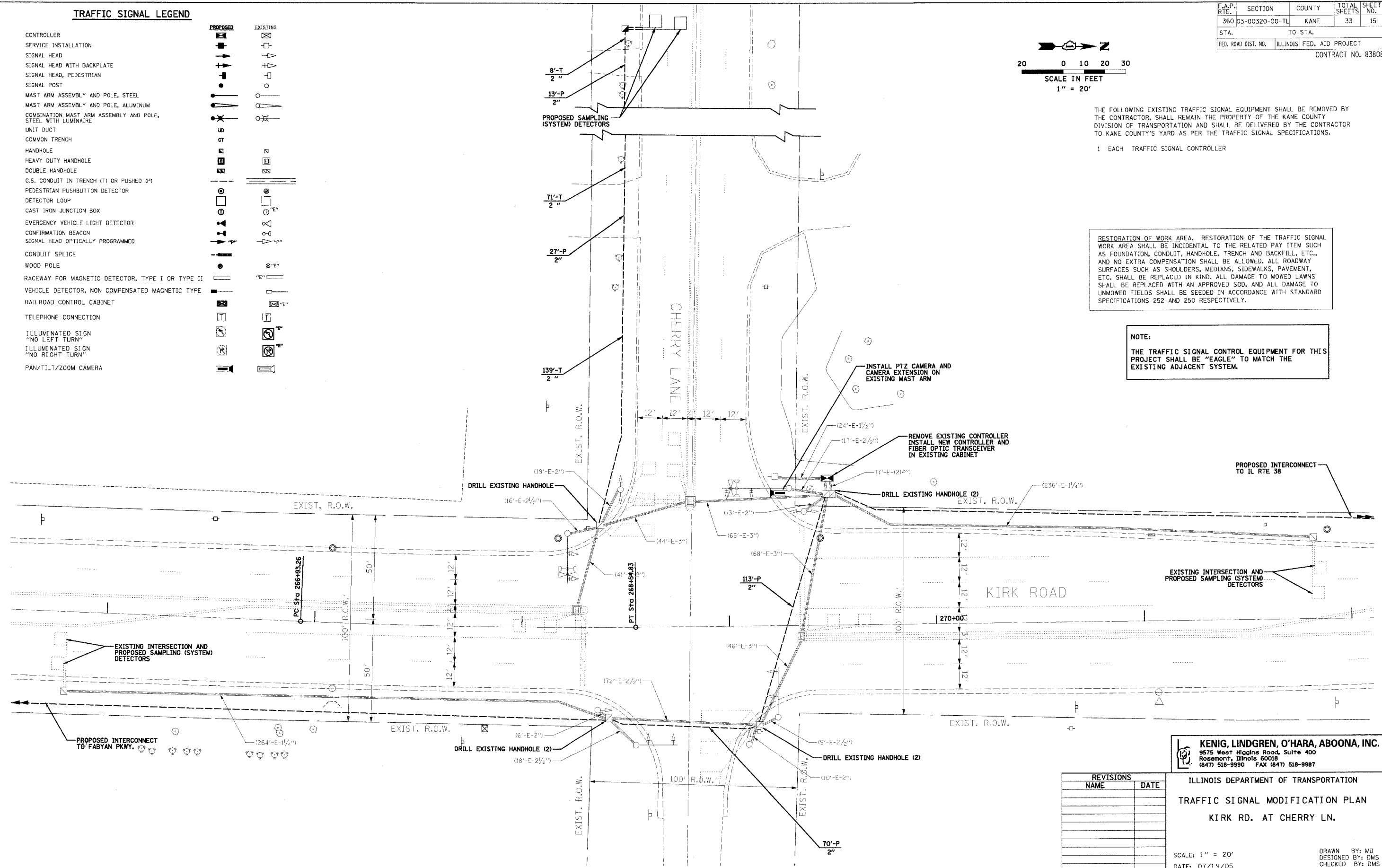


THE FOLLOWING EXISTING TRAFFIC SIGNAL EQUIPMENT SHALL BE REMOVED BY THE CONTRACTOR. THE CONTRACTOR SHALL REMAIN THE PROPERTY OF THE KANE COUNTY DIVISION OF TRANSPORTATION AND SHALL BE DELIVERED BY THE CONTRACTOR TO KANE COUNTY'S YARD AS PER THE TRAFFIC SIGNAL SPECIFICATIONS.

1 EACH TRAFFIC SIGNAL CONTROLLER

**RESTORATION OF WORK AREA.** RESTORATION OF THE TRAFFIC SIGNAL WORK AREA SHALL BE INCIDENTAL TO THE RELATED PAY ITEM SUCH AS FOUNDATION, CONDUIT, HANDHOLE, TRENCH AND BACKFILL, ETC., AND NO EXTRA COMPENSATION SHALL BE ALLOWED. ALL ROADWAY SURFACES SUCH AS SHOULDERS, MEDIANS, SIDEWALKS, PAVEMENT, ETC. SHALL BE REPLACED IN KIND. ALL DAMAGE TO MOWED LAWNS SHALL BE REPLACED WITH AN APPROVED SOG, AND ALL DAMAGE TO UNMOWED FIELDS SHALL BE SEEDED IN ACCORDANCE WITH STANDARD SPECIFICATIONS 252 AND 250 RESPECTIVELY.

**NOTE:**  
THE TRAFFIC SIGNAL CONTROL EQUIPMENT FOR THIS PROJECT SHALL BE "EAGLE" TO MATCH THE EXISTING ADJACENT SYSTEM.



REVISIONS	
NAME	DATE

**KENIG, LINDGREN, O'HARA, ABOONA, INC.**  
 9575 West Higgins Road, Suite 400  
 Rosemont, Illinois 60018  
 (847) 518-9990 FAX (847) 518-9987

ILLINOIS DEPARTMENT OF TRANSPORTATION  
**TRAFFIC SIGNAL MODIFICATION PLAN**  
 KIRK RD. AT CHERRY LN.

SCALE: 1" = 20'  
 DATE: 07/19/05  
 DRAWN BY: MD  
 DESIGNED BY: DMS  
 CHECKED BY: DMS