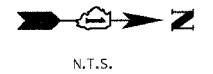


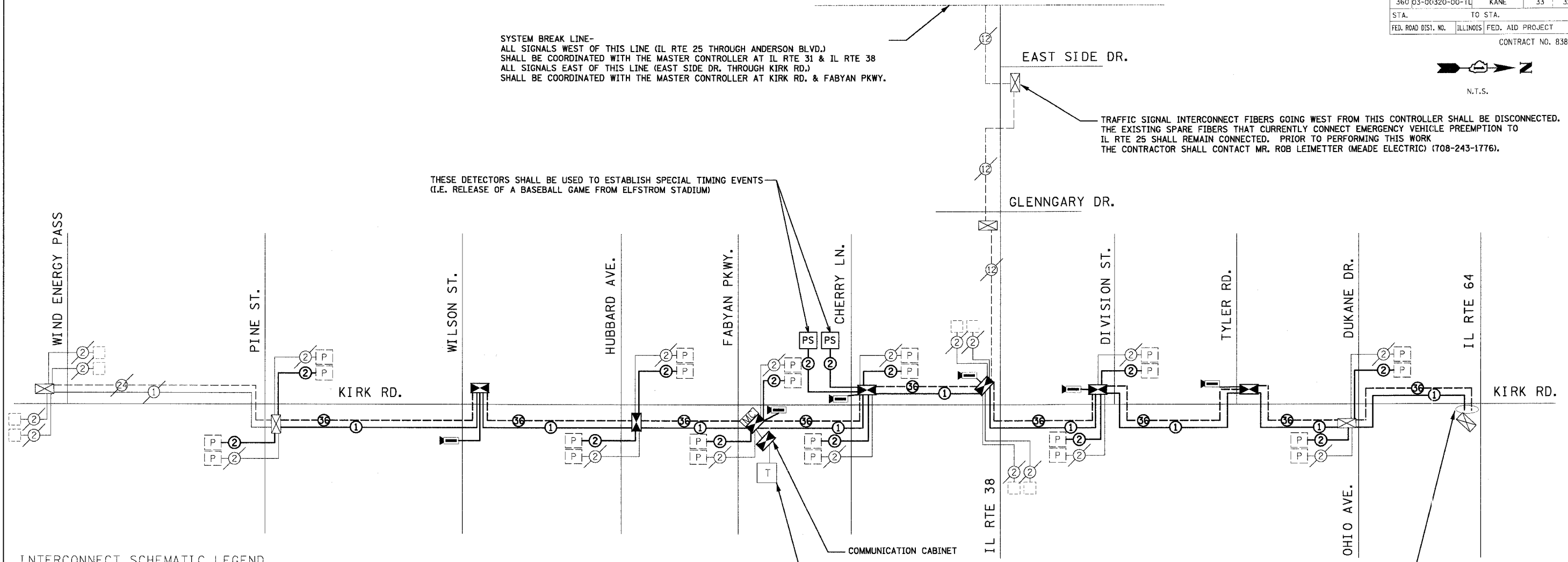
F.A.P. RTE.	SECTION	COUNTY	TOTAL SHEETS	SHEET NO.
360 03-00320-00-TL		KANE	33	32
STA.		TO STA.		
FED. ROAD DIST. NO.	ILLINOIS	FED. AID PROJECT		
CONTRACT NO. 83808				

SYSTEM BREAK LINE-
 ALL SIGNALS WEST OF THIS LINE (IL RTE 25 THROUGH ANDERSON BLVD.)
 SHALL BE COORDINATED WITH THE MASTER CONTROLLER AT IL RTE 31 & IL RTE 38
 ALL SIGNALS EAST OF THIS LINE (EAST SIDE DR. THROUGH KIRK RD.)
 SHALL BE COORDINATED WITH THE MASTER CONTROLLER AT KIRK RD. & FABYAN PKWY.



TRAFFIC SIGNAL INTERCONNECT FIBERS GOING WEST FROM THIS CONTROLLER SHALL BE DISCONNECTED.
 THE EXISTING SPARE FIBERS THAT CURRENTLY CONNECT EMERGENCY VEHICLE PREEMPTION TO
 IL RTE 25 SHALL REMAIN CONNECTED. PRIOR TO PERFORMING THIS WORK
 THE CONTRACTOR SHALL CONTACT MR. ROB LEIMETTER (MEADE ELECTRIC) (708-243-1776).

THESE DETECTORS SHALL BE USED TO ESTABLISH SPECIAL TIMING EVENTS
 (I.E. RELEASE OF A BASEBALL GAME FROM ELFSTROM STADIUM)



INTERCONNECT SCHEMATIC LEGEND

EXISTING INTERSECTION CONTROLLER		EXISTING FIBER OPTIC CABLE IN CONDUIT, NO. 62.5/125, MM2F SM12F	
PROPOSED INTERSECTION CONTROLLER		PROPOSED FIBER OPTIC CABLE IN CONDUIT, NO. 62.5/125, MM2F SM12F	
EXISTING MASTER CONTROLLER		EXISTING INTERCONNECT CABLE - NO. 62.5/125 12F FIBER OPTIC CABLE	
PROPOSED MASTER CONTROLLER		PROPOSED INTERCONNECT CABLE - NO. 62.5/125 12F FIBER OPTIC CABLE	
MASTER MASTER CONTROLLER		EXISTING INTERCONNECT CABLE - NO. 18 3 PAIR TWISTED, SHIELDED	
EXISTING INTERSECTION & SAMPLING (SYSTEM) DETECTORS		PROPOSED INTERCONNECT CABLE - NO. 18 3 PAIR TWISTED, SHIELDED	
PROPOSED INTERSECTION & SAMPLING (SYSTEM) DETECTORS		EXISTING LOOP DETECTOR CABLE 2/C TWISTED, SHIELDED	
EXISTING INTERSECTION LOOP DETECTORS		PROPOSED LOOP DETECTOR CABLE 2/C TWISTED, SHIELDED	
PROPOSED SAMPLING (SYSTEM) DETECTORS		EXISTING ELECTRIC CABLE, 1/C (AS SPECIFIED)	
EXISTING SAMPLING (SYSTEM) DETECTORS.		PROPOSED ELECTRIC CABLE, 1/C (AS SPECIFIED)	
PROPOSED INTERSECTION AND SAMPLING (SYSTEM) DETECTORS.		EXISTING TELEPHONE CONNECTION	
EXISTING SAMPLING (SYSTEM) DETECTORS.		PROPOSED TELEPHONE CONNECTION	
PROPOSED SAMPLING (SYSTEM) DETECTORS.		EXISTING FIBER OPTIC CABLE IN CONDUIT, NO. 62.5/125, MM24F SM12F	
EXISTING PREFORMED INTERSECTION & SAMPLING (SYSTEM) DETECTORS		PROPOSED FIBER OPTIC CABLE IN CONDUIT, NO. 62.5/125, MM24F SM12F	
PROPOSED PREFORMED INTERSECTION & SAMPLING (SYSTEM) DETECTORS		PAN-TILT-ZOOM CAMERA	
EXISTING SAMPLING (SYSTEM) PREFORMED DETECTORS		VARIABLE MESSAGE SIGN	
PROPOSED SAMPLING (SYSTEM) PREFORMED DETECTORS			

PROPOSED INTERCONNECT CABLES SHALL BE INSTALLED UP TO THE DOUBLE HANDHOLE AT KIRK RD & IL RTE 64. 150 FEET OF EXTRA SLACK SHALL BE WRAPPED IN THE HANDHOLES BETWEEN OHIO AND IL RTE 64 AND CONNECTION SHALL NOT BE MADE TO THE CONTROLLER AT IL RTE 64. FUTURE CABLE TERMINATIONS SHALL BE MADE BY OTHERS WHEN THE SYSTEM ON IL RTE 64 IS UPGRADED TO FIBER OPTIC.

NOTE:
 THE TRAFFIC SIGNAL CONTROL EQUIPMENT FOR THIS PROJECT SHALL BE "EAGLE" TO MATCH THE EXISTING ADJACENT SYSTEM.

KENIG, LINDIGREN, O'HARA, ABOONA, INC.
 9575 West Higley Road, Suite 400
 Rosemont, Illinois 60018
 (847) 518-9990 FAX (847) 518-9987

REVISIONS	
NAME	DATE

ILLINOIS DEPARTMENT OF TRANSPORTATION
 INTERCONNECT SCHEMATIC
 KIRK RD.
 FROM WIND ENERGY PASS TO IL RTE 64
 SCALE: NONE
 DATE: 07/19/05
 DRAWN BY: DMS
 DESIGNED BY: DMS
 CHECKED BY: DMS