

STATE OF ILLINOIS
DEPARTMENT OF TRANSPORTATION
DIVISION OF HIGHWAYS
**PLANS FOR PROPOSED
FEDERAL AID PROJECT**

F.A. RTE.	SECTION	COUNTY	TOTAL SHEETS	SHEET NO.
	05-00192-00-SW	COOK	11	1

CONTRACT NO. 83810

FOR INDEX OF SHEETS, SEE SHEET NO. 2

**ILLINOIS DEPARTMENT OF TRANSPORTATION
STANDARD DRAWINGS**

- 000001-04 STANDARD SYMBOLS, ABBREVIATIONS AND PATTERNS
- 424001-04 CURB RAMPS FOR SIDEWALKS
- 442101-05 CLASS B PATCHES
- 602601 PRECAST REINFORCED CONCRETE FLAT SLAB TOP
- 606001-02 CONCRETE CURB TYPE B AND COMBINATION CURB AND GUTTER
- 701501-03 URBAN LANE CLOSURE 2L, 2W, UNDIVIDED
- 701602-02 URBAN LANE CLOSURE MULTILANE, 2W WITH BIDIRECTIONAL LEFT TURN LANE
- 701606-04 URBAN LANE CLOSURE MULTILANE, 2W WITH MOUNTABLE MEDIAN
- 701701-04 URBAN LANE CLOSURE MULTILANE INTERSECTION
- 702001-05 TRAFFIC CONTROL DEVICES
- 780001-01 TYPICAL PAVEMENT MARKINGS

**FAU 2686 MT. PROSPECT ROAD, FAU 1290
OAKTON STREET, FAU 3514 ALGONQUIN ROAD
SIDEWALK IMPROVEMENTS
SECTION NO. 05-00192-00-SW
PROJECT NO: CMM-8003(487)
COOK COUNTY
C-91-139-05**



ARTHUR J. DUDDLES

LIC NO. 062-057494

LIC. EXP. 11-30-05

STATE OF ILLINOIS
DEPARTMENT OF TRANSPORTATION
DIVISION OF HIGHWAYS

SUBMITTED 7-15 2005

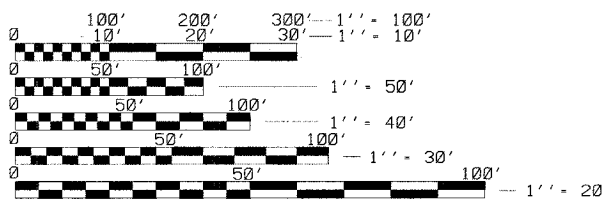
Arthur J. Duddles
CITY ENGINEER

7/19 2005
John P. Kelly
LOCAL ROADS ENGINEER

July 20, 2005
Diane O'Keefe
DEPUTY DIRECTOR OF HIGHWAYS, REGION ENGINEER

IDOT FEDERAL AID ENGINEER: ABIGAIL BRINKS 847-705-4233

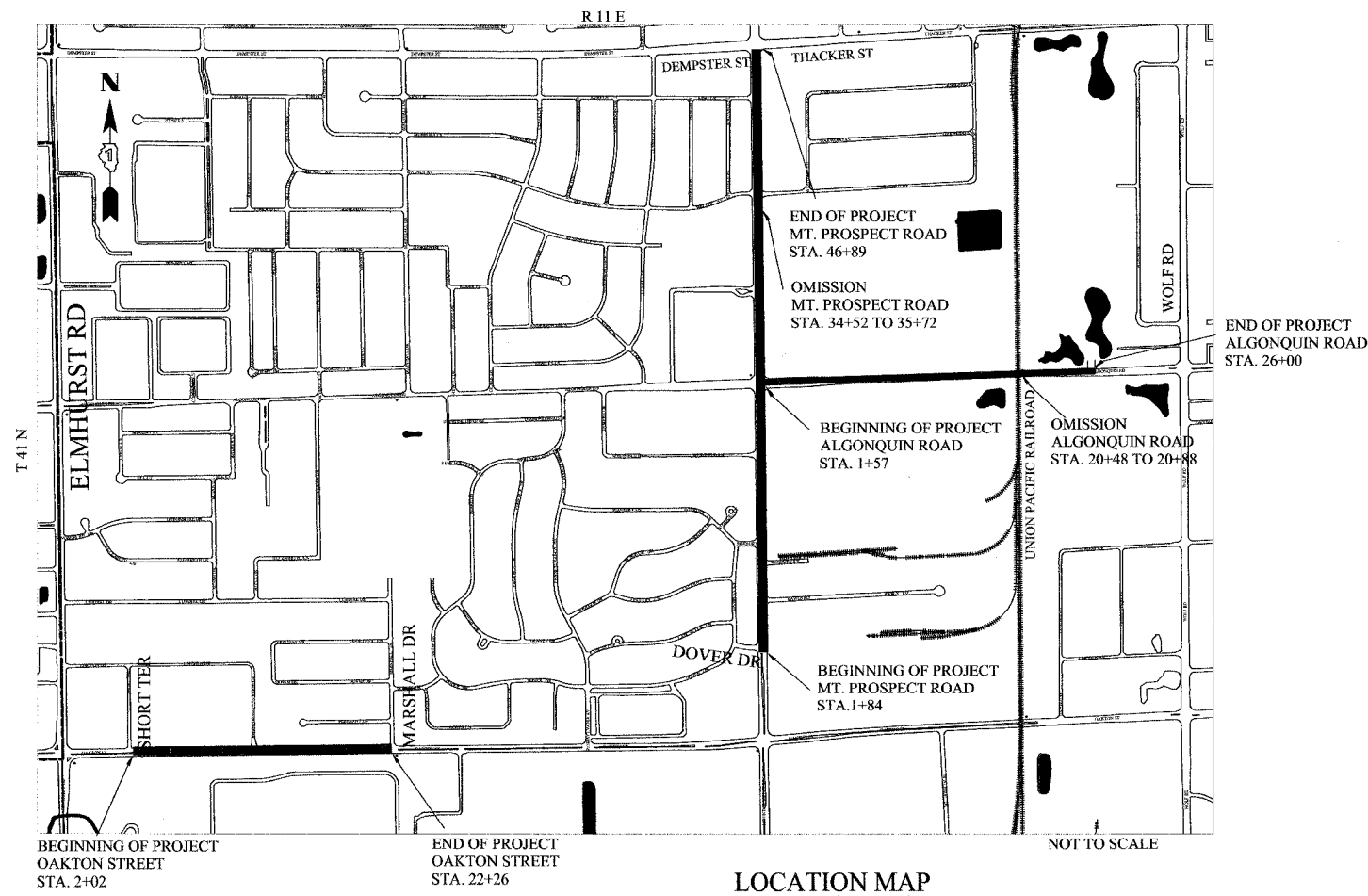
PROJECT LOCATED IN THE
CITY OF DES PLAINES



FULL SIZE PLANS HAVE BEEN PREPARED USING STANDARD ENGINEERING SCALES. REDUCED SIZED PLANS WILL NOT CONFORM TO STANDARD SCALES. IN MAKING MEASUREMENTS ON REDUCED PLANS, THE ABOVE SCALES MAY BE USED.

J.U.L.I.E.
JOINT UTILITY LOCATION INFORMATION FOR EXCAVATION
1-800-892-0123

CONTRACT NO. 83810



PRINTED BY THE AUTHORITY OF THE STATE OF ILLINOIS