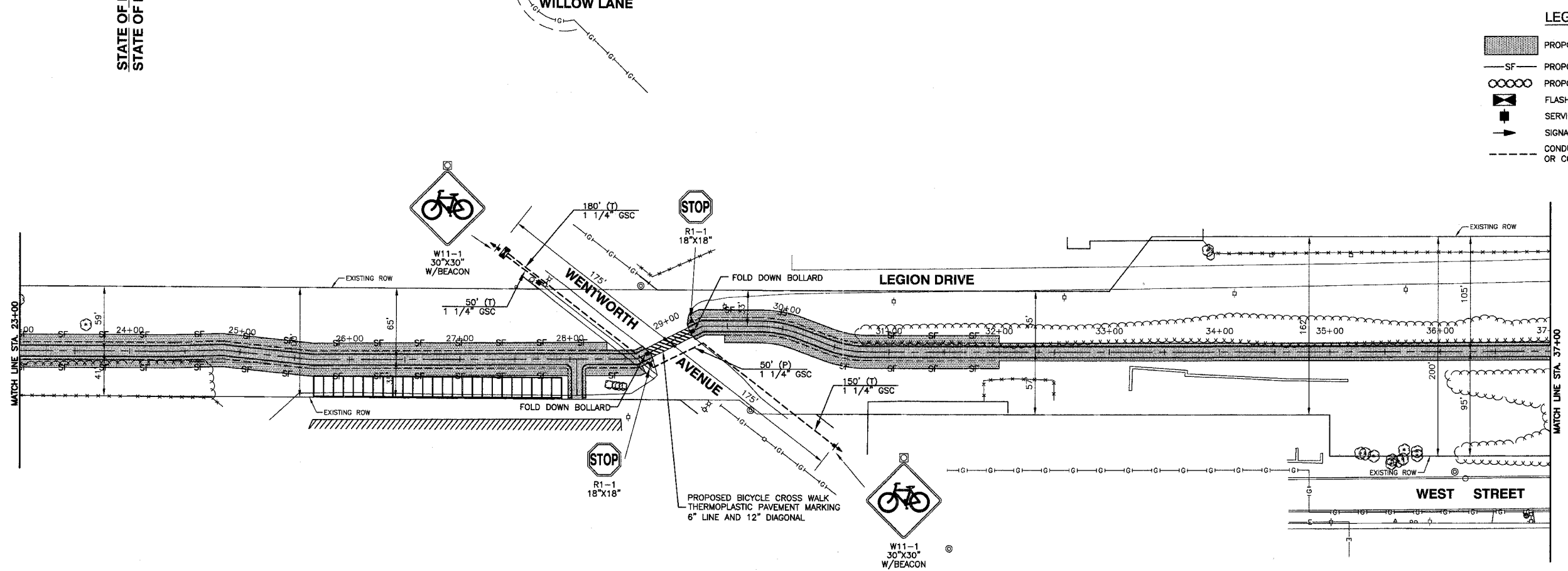
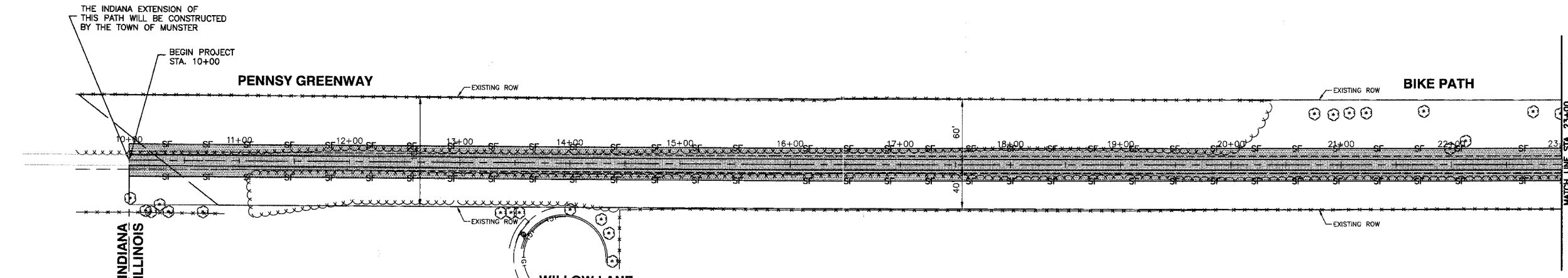
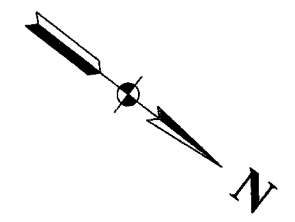


F.A.I. NO.	SECTION	COUNTY	TOTAL SHEETS	SHEET NO.
	03-P4045-01-BT	COOK	080	018
STA.	TO STA.			
FED. ROAD DIST. NO.	ILLINOIS	FED. AID PROJECT		

CONTRACT NO. 83811



LEGEND

- PROPOSED EROSION CONTROL BLANKET
- PROPOSED PERIMETER EROSION BARRIER
- PROPOSED HEDGE LINE
- FLASHER CONTROLLER
- SERVICE INSTALLATION, POLE MOUNTED
- SIGNAL HEAD BEACON
- CONDUIT IN TRENCH, 1 1/4" DIA. GALVANIZED STEEL (T) OR CONDUIT PUSHED, 1 1/4" DIA. GALVANIZED STEEL (P)

ROBINSON ENGINEERING, LTD.
CONSULTING REGISTERED PROFESSIONAL ENGINEERS
AND PROFESSIONAL LAND SURVEYORS
17000 SOUTH PARK AVENUE SOUTH HOLLAND, ILLINOIS 60473
(708) 331-6700 FAX (708) 331-3826
© COPYRIGHT 2005 ILLINOIS DESIGN FIRM REGISTRATION NO. 184001128

SIGNAGE AND EROSION CONTROL PLAN
PENNSY GREENWAY BIKE PATH
STA. 10+00 TO STA. 37+00

LANSING, ILLINOIS

Drawn by: LTL Date: 7/22/05
Checked by: JN/JCP Scale: 1"=50'
Sheet 018 of 080 Project No. 03-365.02

REVISIONS		
No.	Date	Remarks