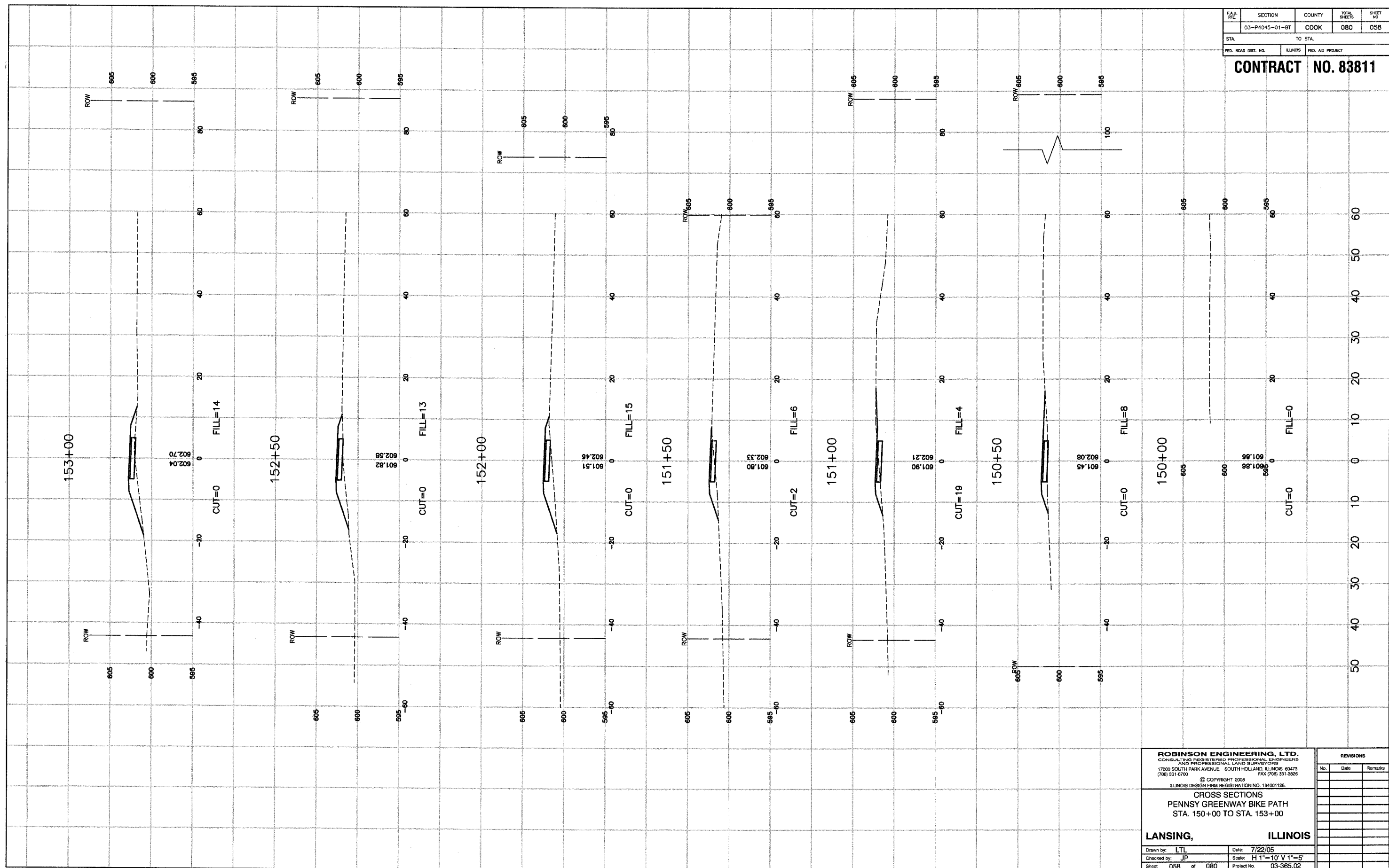


FILE NO.	SECTION	COUNTY	TOTAL SHEETS	SHEET NO.
	03-P4045-01-BT	COOK	080	058
STA.		TO STA.		
FED. ROAD DIST. NO.	ILLINOIS	FED. AID PROJECT		

**CONTRACT NO. 83811**



**ROBINSON ENGINEERING, LTD.**  
CONSULTING REGISTERED PROFESSIONAL ENGINEERS  
AND PROFESSIONAL LAND SURVEYORS  
1700 SOUTH PARK AVENUE SOUTH HOLLAND, ILLINOIS 60470  
(708) 331-6700 FAX (708) 331-3828

© COPYRIGHT 2006  
ILLINOIS DESIGN FIRM REGISTRATION NO. 184001128

**CROSS SECTIONS**  
**PENNSY GREENWAY BIKE PATH**  
**STA. 150+00 TO STA. 153+00**

**LANSING, ILLINOIS**

Drawn by: LTL	Date: 7/22/05
Checked by: JP	Scale: H 1"=10' V 1"=5'
Sheet 058 of 080	Project No. 03-365.02

REVISIONS		
No.	Date	Remarks