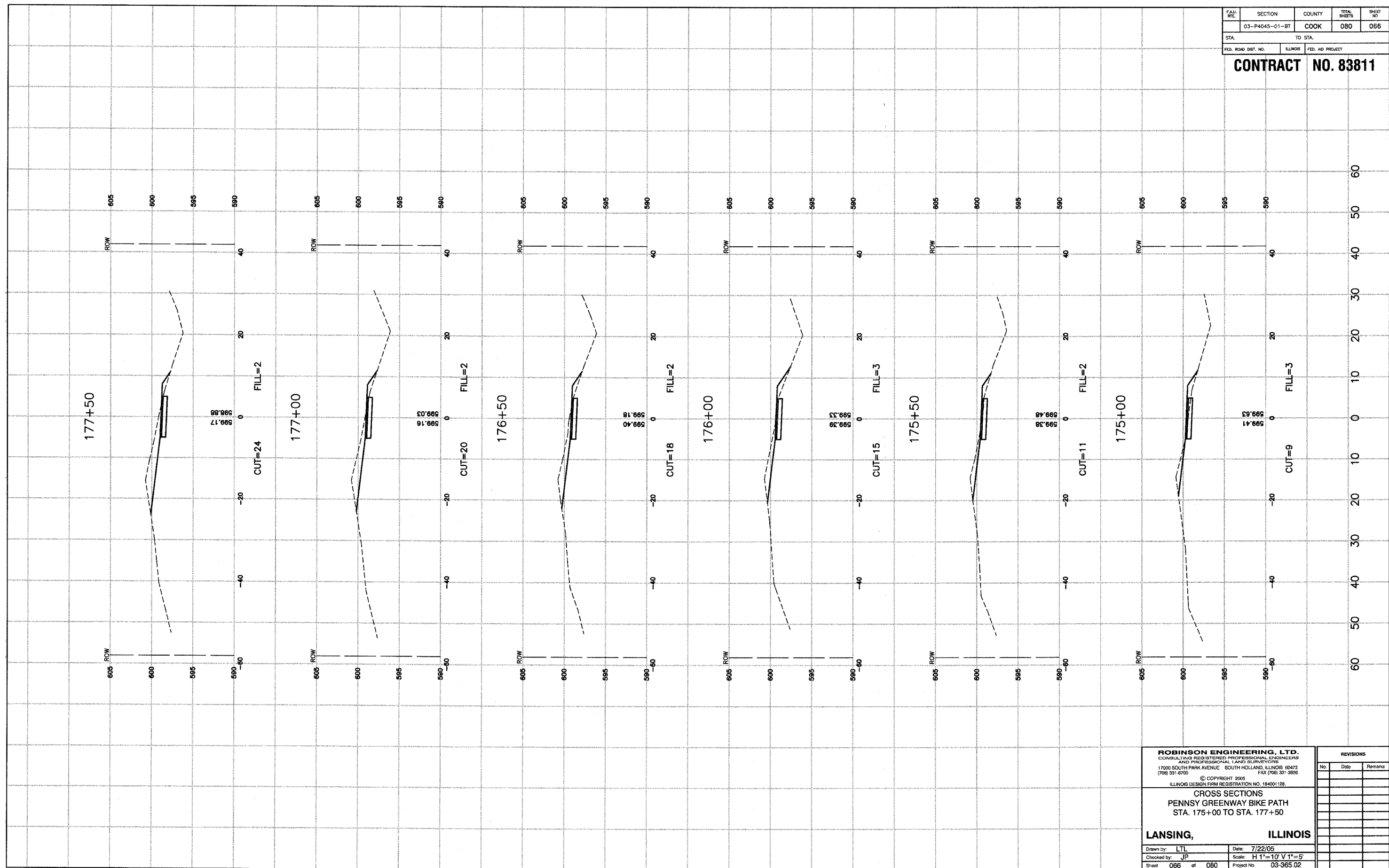


FAU. RTE.	SECTION	COUNTY	TOTAL SHEETS	SHEET NO.
	03-P4045-01-BT	COOK	080	066
STA.	TO STA.			
FED. ROAD DIST. NO.	ILLINOIS	FED. AID PROJECT		

CONTRACT NO. 83811



ROBINSON ENGINEERING, LTD.
 CONSULTING REGISTERED PROFESSIONAL ENGINEERS
 AND PROFESSIONAL LAND SURVEYORS
 17000 SOUTH PARK AVENUE SOUTH HOLLAND, ILLINOIS 60473
 (708) 331-6700 FAX (708) 331-3826

© COPYRIGHT 2005
 ILLINOIS DESIGN FIRM REGISTRATION NO. 184001128

CROSS SECTIONS
PENNSY GREENWAY BIKE PATH
 STA. 175+00 TO STA. 177+50

LANSING, ILLINOIS
 Drawn by: LTL Date: 7/22/05
 Checked by: JP Scale: H 1"=10' V 1"=5'
 Sheet 066 of 080 Project No. 03-365.02

REVISIONS		
No.	Date	Remarks