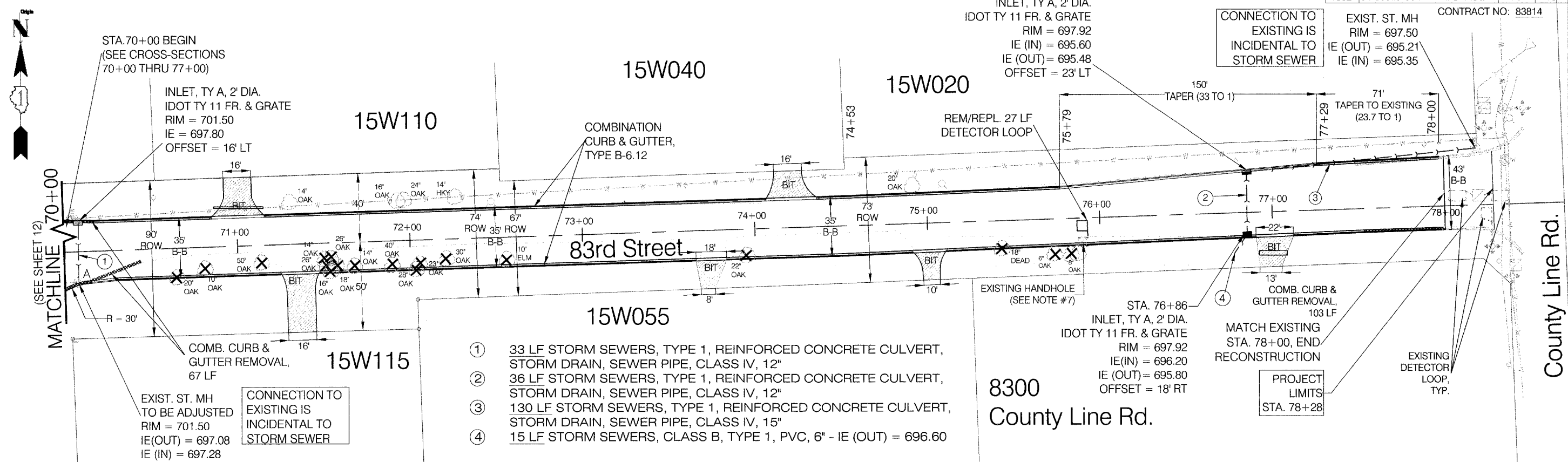


F.A.U. RTE.	SECTION	COUNTY	TOTAL SHEETS	SHEET NO.
1552	04-00029-00-PV	DUPAGE	25	13

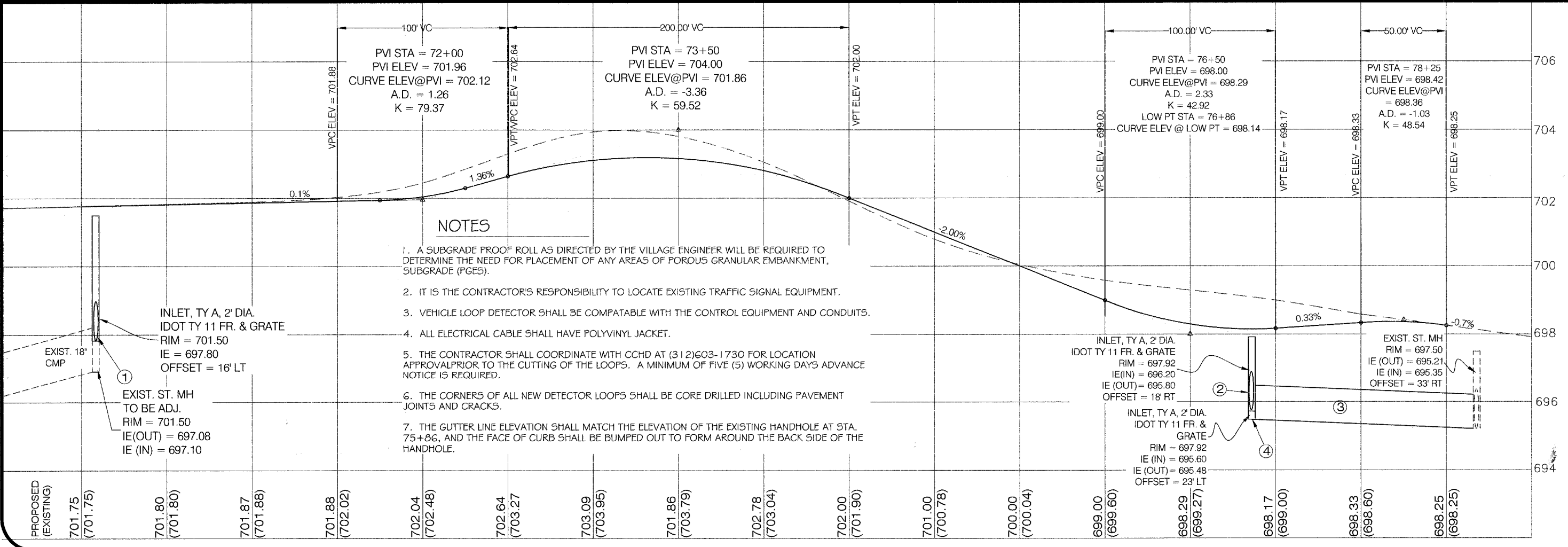
CONTRACT NO: 83814



- ① 33 LF STORM SEWERS, TYPE 1, REINFORCED CONCRETE CULVERT, STORM DRAIN, SEWER PIPE, CLASS IV, 12"
- ② 36 LF STORM SEWERS, TYPE 1, REINFORCED CONCRETE CULVERT, STORM DRAIN, SEWER PIPE, CLASS IV, 12"
- ③ 130 LF STORM SEWERS, TYPE 1, REINFORCED CONCRETE CULVERT, STORM DRAIN, SEWER PIPE, CLASS IV, 15"
- ④ 15 LF STORM SEWERS, CLASS B, TYPE 1, PVC, 6" - IE (OUT) = 696.60

**NOTES**

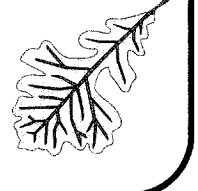
1. A SUBGRADE PROOF ROLL AS DIRECTED BY THE VILLAGE ENGINEER WILL BE REQUIRED TO DETERMINE THE NEED FOR PLACEMENT OF ANY AREAS OF POROUS GRANULAR EMBANKMENT, SUBGRADE (PGES).
2. IT IS THE CONTRACTOR'S RESPONSIBILITY TO LOCATE EXISTING TRAFFIC SIGNAL EQUIPMENT.
3. VEHICLE LOOP DETECTOR SHALL BE COMPATABLE WITH THE CONTROL EQUIPMENT AND CONDUITS.
4. ALL ELECTRICAL CABLE SHALL HAVE POLYVINYL JACKET.
5. THE CONTRACTOR SHALL COORDINATE WITH CCHD AT (312)603-1730 FOR LOCATION APPROVAL PRIOR TO THE CUTTING OF THE LOOPS. A MINIMUM OF FIVE (5) WORKING DAYS ADVANCE NOTICE IS REQUIRED.
6. THE CORNERS OF ALL NEW DETECTOR LOOPS SHALL BE CORE DRILLED INCLUDING PAVEMENT JOINTS AND CRACKS.
7. THE GUTTER LINE ELEVATION SHALL MATCH THE ELEVATION OF THE EXISTING HANDHOLE AT STA. 75+86, AND THE FACE OF CURB SHALL BE BUMPED OUT TO FORM AROUND THE BACK SIDE OF THE HANDHOLE.



83rd Street Improvements  
 STA. 70+00 THRU STA. 78+28  
 PLAN/PROFILE

Date:	Comments:

Village of Burr Ridge, IL  
 Engineering Department  
 451 Commerce St.  
 Burr Ridge, IL 60527  
 Phone: (630) 323-4733  
 FAX: (630) 323-4798



County Line Rd.

Scale: 1" = 30' (H)  
 1" = 1.5' (V)  
 Section No./TIF No.: 04-00-02-900PV08-04-0020  
 Date: JULY, 2005  
 Sheet No.: 13 of 25