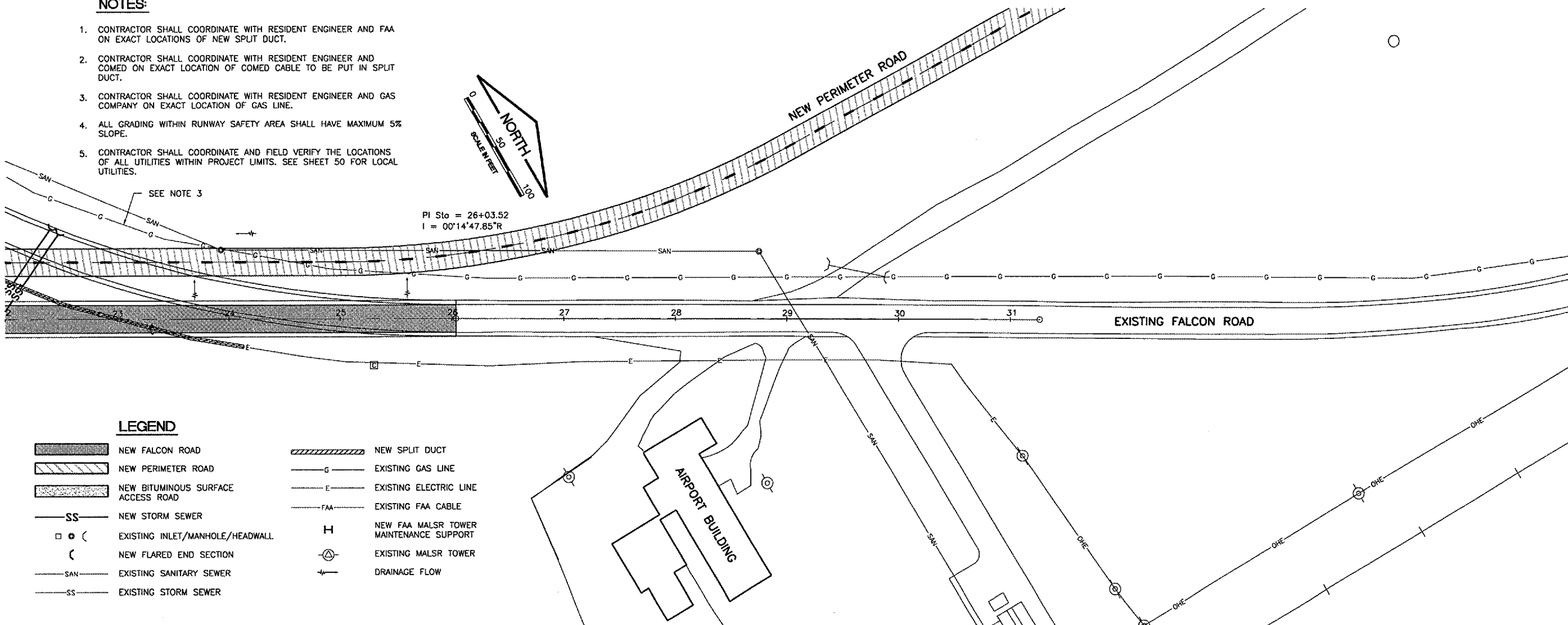
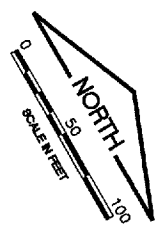


**NOTES:**

1. CONTRACTOR SHALL COORDINATE WITH RESIDENT ENGINEER AND FAA ON EXACT LOCATIONS OF NEW SPLIT DUCT.
2. CONTRACTOR SHALL COORDINATE WITH RESIDENT ENGINEER AND COMED ON EXACT LOCATION OF COMED CABLE TO BE PUT IN SPLIT DUCT.
3. CONTRACTOR SHALL COORDINATE WITH RESIDENT ENGINEER AND GAS COMPANY ON EXACT LOCATION OF GAS LINE.
4. ALL GRADING WITHIN RUNWAY SAFETY AREA SHALL HAVE MAXIMUM 5% SLOPE.
5. CONTRACTOR SHALL COORDINATE AND FIELD VERIFY THE LOCATIONS OF ALL UTILITIES WITHIN PROJECT LIMITS. SEE SHEET 50 FOR LOCAL UTILITIES.



**LEGEND**

- NEW FALCON ROAD
- NEW PERIMETER ROAD
- NEW BITUMINOUS SURFACE ACCESS ROAD
- NEW STORM SEWER
- EXISTING INLET/MANHOLE/HEADWALL
- NEW FLARED END SECTION
- EXISTING SANITARY SEWER
- EXISTING STORM SEWER
- NEW SPLIT DUCT
- EXISTING GAS LINE
- EXISTING ELECTRIC LINE
- EXISTING FAA CABLE
- NEW FAA MALSR TOWER MAINTENANCE SUPPORT
- EXISTING MALSR TOWER
- DRAINAGE FLOW

R0012



Rockford, Illinois

Greater Rockford Airport Authority

AIP: 3-17-0088-43  
RFD-3487

Rehab. Txy B;  
Rwy 1/19 RSA Impr.,  
Falcon Rd. Reloc.  
S. RIAT Rd. Constr.  
E. RIAT Rd. Reloc.

Revisions

No.	Date	Description

0 1  
THIS BAR IS EQUAL TO 1" AT FULL SCALE (17 X 11).

DESIGN BY: CMT- ARR  
DRAWN BY: CMT- ARR  
CHECKED BY: CMT- ARR  
APPROVED BY: JGP  
DATE: 7.29.2005  
JOB No: 04258-05-00

**PLAN AND PROFILE**  
**2**  
**(FPP2)**

24

