

R0012



Rockford, Illinois

Greater Rockford Airport Authority

AIP: 3-17-0088-43  
RFD-3487

Rehab. Txy B;  
Rwy 1/19 RSA Impr.,  
Falcon Rd. Reloc.  
S. RIAT Rd. Constr.  
E. RIAT Rd. Reloc.

Revisions

No.	Date	Description

THIS BAR IS EQUAL TO 1" AT FULL SCALE (17 X 11).

DESIGN BY: CMT-ARR  
DRAWN BY: CMT-ARR  
CHECKED BY: CMT-ARR  
APPROVED BY: JGP  
DATE: 7.29.2005  
JOB No: 05258-04-00

PLAN AND PROFILE  
3  
(SPP3)

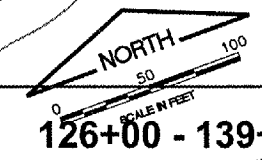
32

MATCHLINE STA. 126+00

CIRCULAR  
Dc = 13°58'28.49"  
Dc = 14°00'34.03"  
T = 316.56  
R = 410.00  
L = 539.15  
C = 501.13  
E = 107.99  
M = 85.48

CIRCULAR  
Dc = 23°00'37.27"  
Dc = 23°10'04.32"  
T = 156.61  
R = 248.00  
L = 279.58  
C = 265.13  
E = 45.15  
M = 38.22

SEE RIAT ROAD  
PLAN AND PROFILE 8  
FOR LEGEND



126+00 - 139+00

