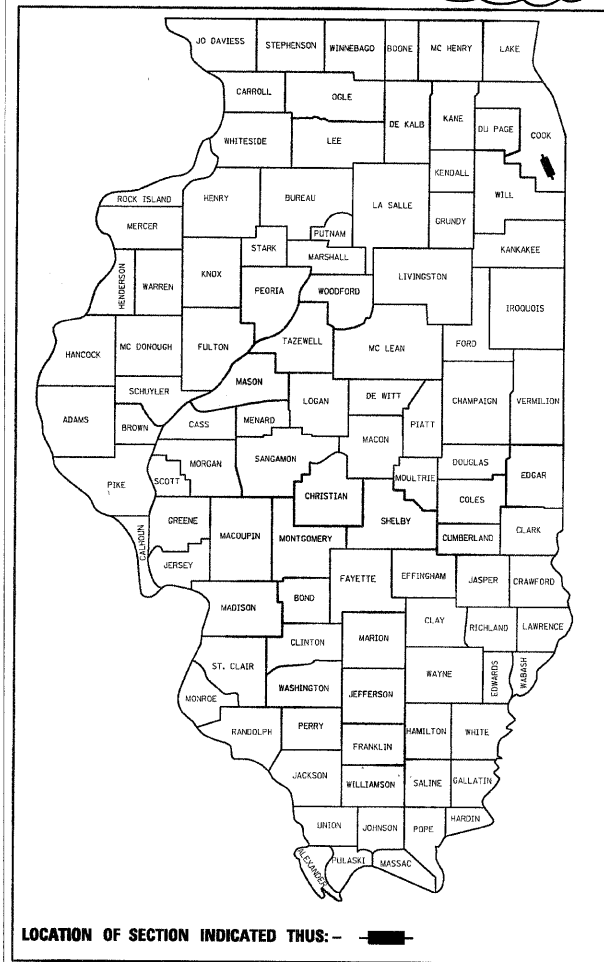


F.A.I. RTE.	SECTION	COUNTY	TOTAL SHEETS	SHEET NO.
57	112.1B	COOK	75	1
		ILLINOIS	CONTRACT NO. 60863	

0-91-534-99

*75+1 = 76
*76+3 = 79



LOCATION OF SECTION INDICATED THUS: —■—

STATE OF ILLINOIS
DEPARTMENT OF TRANSPORTATION
DIVISION OF HIGHWAYS

**PROPOSED
HIGHWAY PLANS**

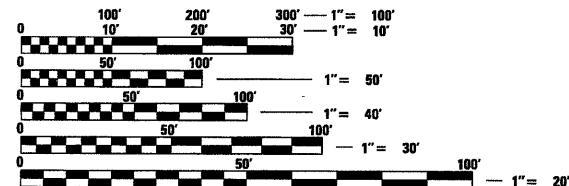
F.A.I. ROUTE 57 (INTERSTATE 57) AT
F.A.U. ROUTE 3778 (CRAWFORD AVENUE) (SN 016-1015)
SECTION 112.1B
PROJECT : ACBHI-057-7(292)346
COOK COUNTY
BRIDGE DECK REMOVAL AND REPLACEMENT
C-91-534-99

FOR INDEX OF SHEETS, SEE SHEET NO. 2

TRAFFIC DATA

CRAWFORD AVENUE
EXISTING ADT : 13,300 (2010)
POSTED SPEED LIMIT 45 MPH
IL 57
EXISTING ADT : 105,100 (2008)
POSTED SPEED LIMIT 55 MPH

THIS PROJECT WILL REQUIRE AUTHORIZATION UNDER (SWPPP) PERMIT
IMPROVEMENT IS LOCATED IN THE CITY OF MARKHAM



FULL SIZE PLANS HAVE BEEN PREPARED USING STANDARD ENGINEERING SCALES. REDUCED SIZED PLANS WILL NOT CONFORM TO STANDARD SCALES. IN MAKING MEASUREMENTS ON REDUCED PLANS, THE ABOVE SCALES MAY BE USED.

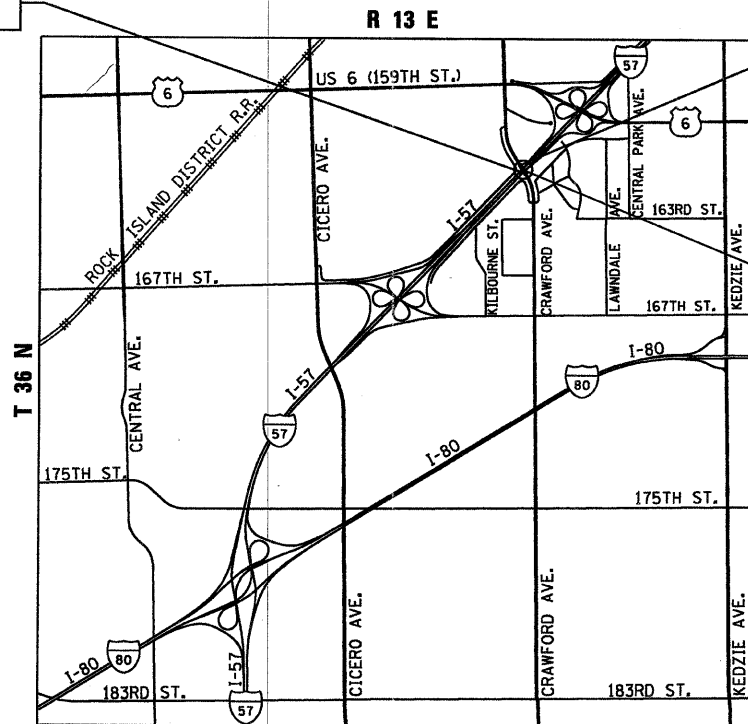
J.U.L.I.E.
JOINT UTILITY LOCATION INFORMATION FOR EXCAVATION
1-800-892-0123
OR 811

PROJECT ENGINEER ROBERT BORO
PROJECT MANAGER ISSAM RAYYAN

CONTRACT NO. 60863



PROJECT BEGINS STA. 19+25



PROJECT ENDS STA. 29+00

± STA. 23+91.74
SN 016-1015

BREMEN TWP

LOCATION MAP
NOT TO SCALE

GROSS LENGTH = 975 FT. = 0.18 MILE
NET LENGTH = 975 FT. = 0.18 MILE



THOMAS M. HEIN, P. E.
IL. L.I.C. NO. 062-053199
EXP 11-30-2011
DATE 07-07-2011

STATE OF ILLINOIS
DEPARTMENT OF TRANSPORTATION
DIVISION OF HIGHWAYS
SUBMITTED July 12, 2011
Diane M. O'Keefe
DEPUTY DIRECTOR OF HIGHWAYS, REGION ENGINEER
August 19, 2011
Scott E. Stitt, P.E.
ENGINEER OF DESIGN AND ENVIRONMENT
August 19, 2011
Christine M. Road
DIRECTOR OF HIGHWAYS, CHIEF ENGINEER

PRINTED BY THE AUTHORITY
OF THE STATE OF ILLINOIS

Rev. 9-8-11

INDEX OF SHEETS

 SHEET NO. DESCRIPTION

1	TITLE SHEET
2	INDEX OF SHEETS, GENERAL NOTES, & HIGHWAY STANDARDS
3 - 4	SUMMARY OF QUANTITIES
5	TYPICAL SECTIONS
6 - 8	SCHEDULE OF QUANTITIES
9 - 10	ALIGNMENT, TIES, AND BENCHMARKS
11	EXISTING AND PROPOSED ROADWAY PLAN
12	EXISTING AND PROPOSED PROFILE
13	MAINTENANCE OF TRAFFIC - GENERAL NOTES AND TYPICAL SECTIONS
14 - 17	MAINTENANCE OF TRAFFIC - SUGGESTED TRAFFIC CONTROL STAGES 1 & 2
* 18 - 19	PAVEMENT MARKING, LANDSCAPING, AND EROSION CONTROL PLAN
* 20 - 23	SIGN DETAILS
24	UNDERPASS LIGHTING GENERAL NOTES
25	UNDERPASS LIGHTING PLAN
26 - 27	UNDERPASS LIGHTING DETAILS
28 - 63	STRUCTURAL SHEETS
64	ROADWAY DETAIL - TYPE 1 TERMINALS
65	DISTRICT ONE BUTT JOINT AND HMA TAPER DETAILS (BD-32)
* 66 - 68	DISTRICT ONE TYPE 6 TERMINAL FOR USE WITH 21 IN HIGH SPBGR (BM-22)
69	DISTRICT ONE TRAFFIC CONTROL AND PROTECTION FOR SIDE ROADS, INTERSECTIONS, AND DRIVEWAYS (TC-10)
70	DISTRICT ONE RAISED REFLECTIVE PAVEMENT MARKERS (TC-11)
71	DISTRICT ONE TYPICAL PAVEMENT MARKINGS (TC-13)
72	DISTRICT ONE TRAFFIC CONTROL AND PROTECTION AT TURN BAYS (TO REMAIN OPEN TO TRAFFIC) (TC-14)
73	DISTRICT ONE TRAFFIC CONTROL DETAILS FOR FREEWAY SHOULDER CLOSURES AND PARTIAL RAMP CLOSURES (TC-17)
74	DISTRICT ONE ARTERIAL ROAD INFORMATION SIGN (TC-22)
75	DISTRICT ONE TRAFFIC CONTROL DETAILS FOR FREEWAY CENTER LANE CLOSURE SHOULDER LANE (TC-25)

* INCLUDES 18A.

* INCLUDES 21A.

* INCLUDES 68A.

GENERAL NOTES

- *****
- BEFORE STARTING ANY EXCAVATION, THE CONTRACTOR SHALL CALL "JULIE" AT 1-800-892-0123 OR 811 FOR FIELD LOCATIONS OF BURIED ELECTRIC, TELEPHONE, AND GAS FACILITIES. (48 HOUR NOTIFICATION IS REQUIRED)
 - 10 FOOT TRANSITIONS SHALL BE USED TO MATCH PROPOSED CURB AND GUTTER AND MEDIAN ITEMS OF WORK TO EXISTING CURBS AND GUTTER AND MEDIANS IN THE FIELD, UNLESS OTHERWISE SHOWN. THE TRANSITIONS SHALL BE PAID FOR AT THE CONTRACT UNIT PRICE FOR THE PROPOSED ITEMS OF WORK SPECIFIED.
 - THE CONTRACTOR SHALL COORDINATE CONSTRUCTION ACTIVITIES WITH UTILITY COMPANIES, AND THE CITY OF MARKHAM.
 - THE CONTRACTOR WILL NOT BE ALLOWED TO SET UP A YARD OR FIELD OFFICE ON STATE PROPERTY WITHOUT WRITTEN PERMISSION FROM THE DEPARTMENT.
 - ALL DAMAGE TO EXISTING PAVEMENT MARKINGS OR RAISED REFLECTIVE PAVEMENT MARKERS OUTSIDE THE REMOVAL LINE SHOWN ON THE PLANS SHALL BE REPLACED AT NO ADDITIONAL COST TO THE DEPARTMENT.
 - BEFORE BEGINNING ANY WORK, THE CONTRACTOR SHALL RETAIN AND RECORD FOR FUTURE REFERENCE, ALL EXISTING PAVEMENT MARKING LINES AND RAISED REFLECTIVE PAVEMENT MARKERS IN ORDER THAT THESE LOCATIONS CAN BE RE-ESTABLISHED FOR STRIPING. EXACT LOCATIONS OF ALL PAVEMENT MARKINGS SHALL BE AS DIRECTED BY THE ENGINEER.
 - THE RESIDENT ENGINEER SHALL CONTACT MS. PATRICE HARRIS, AREA TRAFFIC FIELD ENGINEER AT (708) 597-9800 A MINIMUM OF TWO WEEKS PRIOR TO PLACEMENT OF PERMANENT PAVEMENT MARKINGS.
 - DOUBLE LANE MARKERS ARE TO BE USED AS SHOWN ON THE DISTRICT ONE DETAIL TYPICAL APPLICATIONS - RAISED REFLECTIVE PAVEMENT MARKERS (SNOW-PLOW RESISTANT) SHOWN IN THE PLANS.
 - ALL PAVEMENT PATCHING LOCATIONS WILL BE DETERMINED IN THE FIELD BY THE ENGINEER.
 - LOCATION OF COMBINATION CONCRETE CURB AND GUTTER REMOVAL AND COMBINATION CONCRETE CURB AND GUTTER TYPE B6.12, WILL BE DETERMINED IN THE FIELD BY THE ENGINEER.
 - DRAINAGE ADJUSTMENT OR RECONSTRUCTION LOCATIONS WILL BE DETERMINED IN THE FIELD BY THE ENGINEER.
 - IT SHALL BE THE CONTRACTOR'S RESPONSIBILITY TO VERIFY ALL DIMENSIONS AND CONDITIONS EXISTING IN THE FIELD PRIOR TO CONSTRUCTION AND ORDERING OF MATERIALS.
 - THE CONTRACTOR SHALL CONTACT THE TRAFFIC CONTROL SUPERVISOR AT (847) 705-4470 AND THE EXPRESSWAY TRAFFIC CONTROL SUPERVISOR AT (847)705-4155 A MINIMUM OF 72 HOURS PRIOR TO START.
 - THE CONTRACTOR SHALL BE REQUIRED TO PROVIDE ACCESS TO ABUTTING PROPERTY AT ALL TIMES DURING THE CONSTRUCTION OF THIS PROJECT.
 - DO NOT SCALE PLANS FOR CONSTRUCTION DIMENSIONS.
 - WHEN MILLED PAVEMENT IS OPEN TO TRAFFIC THE MAXIMUM GRADE DIFFERENTIAL BETWEEN PASSES OF THE MILLING MACHINE SHALL NOT EXCEED 1.5 INCHES WHERE THE SPEED LIMIT IS 45 MPH OR LESS AND 1 INCH WHERE THE SPEED LIMIT IS GREATER THAN 45 MPH. WITH WRITTEN APPROVAL FROM THE ENGINEER, A MAXIMUM GRADE DIFFERENTIAL OF 3 INCHES MAY BE ALLOWED IF THE EDGE OF THE MILLING IS SLOPED A MINIMUM 1:3 (V:H).

- OVERNIGHT CLOSURES SHALL NOT BE ALLOWED FOR REHABILITATION PROJECTS INVOLVING DAYTIME MILLING AND RESURFACING OPERATIONS AND CLASS D PATCHING UNLESS OTHER CONDITIONS WARRANT EXTENDED LANE CLOSURES AS DETERMINED AND APPROVED IN WRITING BY THE ENGINEER OR AS PROVIDED FOR IN THE CONTRACT SPECIFICATIONS.
- WET REFLECTIVE TEMPORARY TAPE, TYPE III SHALL BE USED FOR TEMPORARY PAVEMENT MARKINGS ON ALL FINAL SURFACES. THE COST OF TEMPORARY PAVEMENT MARKING TAPE REMOVAL SHALL BE INCLUDED IN THE COST OF WORK ZONE PAVEMENT MARKING REMOVAL.
- FULL DEPTH SAW CUTS SHALL BE MADE AS DIRECTED BY THE ENGINEER TO REMOVE THE EXISTING PAVEMENT, CURB AND GUTTER, SIDEWALK, AND MEDIAN. THIS WORK SHALL BE INCLUDED IN THE UNIT PRICE FOR THE ITEM BEING REMOVED. SAW CUTS NEEDED FOR CLASS B PATCHES WILL BE PAID FOR AT THE UNIT PRICE FOR "SAW CUTS".

HIGHWAY STANDARDS

280001-05	TEMPORARY EROSION CONTROL SYSTEMS
420001-07	PAVEMENT JOINTS
420401-08	BRIDGE APPROACH PAVEMENT CONNECTOR
420701-02	PAVEMENT FABRIC
442101-07	CLASS B PATCHES
606001-04	CONCRETE CURB TYPE B AND COMBINATION CONCRETE CURB AND GUTTER
606306-03	CORRUGATED PC CONCRETE MEDIANS
630001-09	STEEL PLATE BEAM GUARDRAIL
630301-05	SHOULDER WIDENING FOR TYPE 1 (SPECIAL) GUARDRAIL TERMINALS
631011-07	TRAFFIC BARRIER TERMINAL, TYPE 2
631031-09	TRAFFIC BARRIER TERMINAL, TYPE 6
635006-03	REFLECTOR AND TERMINAL MARKER PLACEMENT
635011-02	REFLECTOR MARKER AND MOUNTING DETAILS
664001-02	CHAIN LINK FENCE
701101-02	OFF-ROAD OPERATIONS, MULTILANE, 4.5 m (15') TO 600 mm (24") FROM PAVEMENT EDGE
701400-06	APPROACH TO LANE CLOSURE, FREEWAY/EXPRESSWAY
701401-06	LANE CLOSURE, FREEWAY/EXPRESSWAY
701406-06	LANE CLOSURE, FREEWAY/EXPRESSWAY, DAY OPERATIONS ONLY
701431-06	LANE CLOSURE, MULTILANE, UNDIVIDED WITH CROSSOVER, FOR SPEEDS ≤ 45 MPH TO 55 MPH
701606-07	URBAN LANE CLOSURE, MULTILANE, 2W WITH MOUNTABLE MEDIAN
701901-01	TRAFFIC CONTROL DEVICES
704001-06	TEMPORARY CONCRETE BARRIER
720006-02	SIGN PANEL ERECTION DETAILS

515001-03
 542401-01
 609006-05
 701311-03
 701421-03

FILE NAME = G:\p\proj\2102155_204_VA000\CV11\Smt\0162B63-02aht-gemata.dgn

SUMMARY OF QUANTITIES

CODE NO.	ITEM	UNIT	80% FED. 20% STATE URBAN TOTAL QUANTITY	CONSTRUCTION TYPE CODE	
				ROADWAY 0004	BRIDGE 0014
70301000	WORK ZONE PAVEMENT MARKING REMOVAL	SQ FT	4,865	4,865	0
70400100	TEMPORARY CONCRETE BARRIER	FOOT	590	590	0
70400200	RELOCATE TEMPORARY CONCRETE BARRIER	FOOT	590	590	0
72000300	SIGN PANEL - TYPE 3	SQ FT	791	791	0
72100730	RELOCATE SIGN PANEL TYPE 3	SQ FT	311	311	0
73304000	OVERHEAD SIGN STRUCTURE - BRIDGE MOUNTED	FOOT	67	67	0
73602000	REMOVE OVERHEAD SIGN STRUCTURE - BRIDGE MOUNTED	EACH	4	4	0
78000200	THERMOPLASTIC PAVEMENT MARKING - LINE 4"	FOOT	11,232	11,232	0
78000600	THERMOPLASTIC PAVEMENT MARKING - LINE 12"	FOOT	61	61	0
78008200	POLYUREA PAVEMENT MARKING TYPE I - LETTERS AND SYMBOLS	SQ FT	36.4	36.4	0.0
78008210	POLYUREA PAVEMENT MARKING TYPE I - LINE 4"	FOOT	7,724	7,724	0
78008230	POLYUREA PAVEMENT MARKING TYPE I - LINE 6"	FOOT	110	110	0
78100100	RAISED REFLECTIVE PAVEMENT MARKER	EACH	72	72	0
78100105	RAISED REFLECTIVE PAVEMENT MARKER (BRIDGE)	EACH	16	16	0
78200100	MONODIRECTIONAL PRISMATIC BARRIER REFLECTOR	EACH	8	8	0
78200410	GUARDRAIL MARKERS, TYPE A	EACH	28	28	0
78201000	TERMINAL MARKER - DIRECT APPLIED	EACH	2	2	0
78300100	PAVEMENT MARKING REMOVAL	SQ FT	6,472	6,472	0
78300200	RAISED REFLECTIVE PAVEMENT MARKER REMOVAL	EACH	72	72	0
81100320	CONDUIT ATTACHED TO STRUCTURE, 1" DIA., PVC COATED GALVANIZED STEEL	FOOT	525	525	0
81100805	CONDUIT ATTACHED TO STRUCTURE, 3" DIA., PVC COATED GALVANIZED STEEL	FOOT	80	80	0
81300220	JUNCTION BOX, STAINLESS STEEL, ATTACHED TO STRUCTURE, 6" X 6" X 4"	EACH	14	14	0
81300530	JUNCTION BOX, STAINLESS STEEL, ATTACHED TO STRUCTURE, 12" X 10" X 6"	EACH	2	2	0
81300730	JUNCTION BOX, STAINLESS STEEL, ATTACHED TO STRUCTURE, 16" X 14" X 6"	EACH	2	2	0
81702110	ELECTRIC CABLE IN CONDUIT, 600V (XLP-TYPE USE) 1/C NO. 10	FOOT	1,975	1,975	0
81702120	ELECTRIC CABLE IN CONDUIT, 600V (XLP-TYPE USE) 1/C NO. 8	FOOT	245	245	0
81702130	ELECTRIC CABLE IN CONDUIT, 600V (XLP-TYPE USE) 1/C NO. 6	FOOT	735	735	0
81900200	TRENCH AND BACKFILL FOR ELECTRICAL WORK	FOOT	245	245	0
82107200	UNDERPASS LUMINAIRE, 100 WATT, HIGH PRESSURE SODIUM VAPOR	EACH	8	8	0
X0325541	REMOVE EXISTING LIGHTING SYSTEM	L SUM	1.0	1.0	0.0
X0018800	DRAINAGE SYSTEM	L SUM	1.0	0.0	1.0
X2070304	POROUS GRANULAR EMBANKMENT, SPECIAL	CU YD	36	0.0	36
X6060500	CORRUGATED MEDIAN REMOVAL	SQ FT	3,412	3,412	0
X6640304	CHAIN LINK FENCE TO BE REMOVED AND RE-ERECTED	FOOT	152	152	0
X7010216	TRAFFIC CONTROL AND PROTECTION, (SPECIAL)	L SUM	1.0	1.0	0.0

CODE NO.	ITEM	UNIT	80% FED. 20% STATE URBAN TOTAL QUANTITY	CONSTRUCTION TYPE CODE	
				ROADWAY 0004	BRIDGE 0014
X7011015	TRAFFIC CONTROL AND PROTECTION (EXPRESSWAYS)	L SUM	1.0	1.0	0.0
X7030025	WET REFLECTIVE TEMPORARY TAPE, TYPE III, LETTERS AND SYMBOLS	SQ FT	36	36	0
X7030030	WET REFLECTIVE TEMPORARY TAPE, TYPE III, 4 INCH	FOOT	14,485	14,485	0
X7200056	TEMPORARY SIGN PANEL ASSEMBLY	SQ FT	311	311	0
Z0001899	JACK AND REMOVE EXISTING BEARINGS	EACH	20	0	20
Z0004552	APPROACH SLAB REMOVAL	SQ YD	274	274	
Z0012754	STRUCTURAL REPAIR OF CONCRETE (DEPTH EQUAL TO OR LESS THAN 5 INCHES)	SQ FT	664	0	664
Z0013798	CONSTRUCTION LAYOUT	L SUM	1.0	1.0	0.0
Z0018002	DRAINAGE SCUPPERS, DS-11	EACH	12	0	12
Z0018004	DRAINAGE SCUPPERS, DS-12	EACH	2	0	2
Z0026407	TEMPORARY SHEET PILING	SQ FT	141	0	141
Z0030280	IMPACT ATTENUATORS, TEMPORARY (SEVERE USE, NARROW), TEST LEVEL 3	EACH	2	2	0
Z0030360	IMPACT ATTENUATORS, RELOCATE (SEVERE USE), TEST LEVEL 3	EACH	2	2	0
Z0030850	TEMPORARY INFORMATION SIGNING	SQ FT	212.75	212.75	0
Z0033028	MAINTENANCE OF LIGHTING SYSTEM	CAL MO	6	6	0
Z0046304	PIPE UNDERDRAINS FOR STRUCTURES 4"	FOOT	69	0	69
Z0062456	TEMPORARY PAVEMENT	SQ YD	379	379	0
Z0100200	TEMPORARY RAISED REFLECTIVE PAVEMENT MARKERS	EACH	25	25	
X7013820	TRAFFIC CONTROL SURVEILLANCE (EXPRESSWAYS)	CAL DAY	10	10	

* SPECIALTY ITEMS

FILE NAME = G:\p\p\p\2011\2011-06-15-2011\116963-03\int-500.dgn



USER NAME = zpsand
 PLOT SCALE = 50.00' / IN.
 PLOT DATE = 7/6/2011

DESIGNED - DJB
 DRAWN - ENTRAN
 CHECKED - TMH
 DATE - 06/15/11

REVISED -
 REVISED -
 REVISED -
 REVISED -

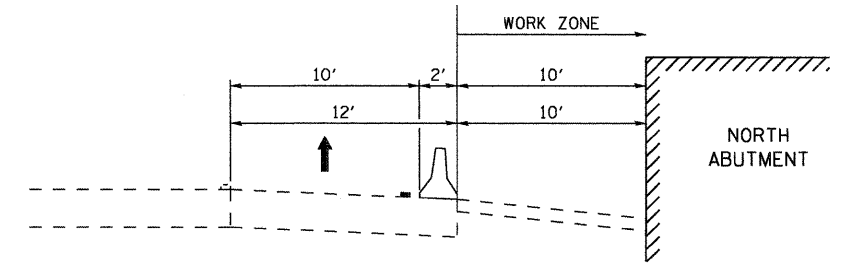
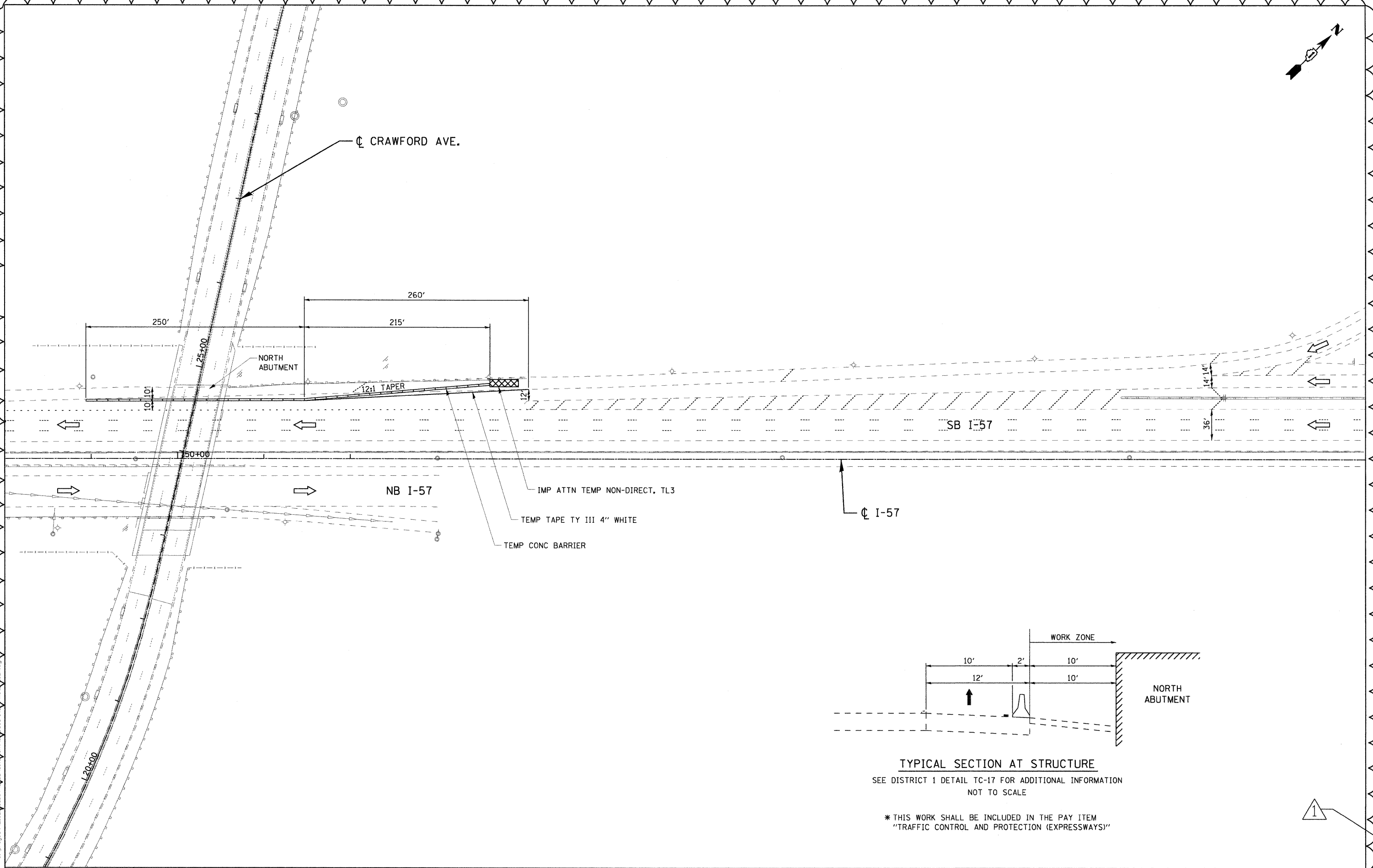
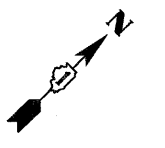
STATE OF ILLINOIS
 DEPARTMENT OF TRANSPORTATION

FAU ROUTE 57 (INTERSTATE 57) AT FAU ROUTE 3778 (CRAWFORD AVENUE)

SUMMARY OF QUANTITIES

SCALE: 50.00' / IN. SHEET NO. OF SHEETS STA. TO STA.

Rev. 9-8-11
 F.A.I. RTE. 57 SECTION 1112.1B COUNTY COOK TOTAL SHEETS 75 SHEET NO. 4
 CONTRACT NO. 60863
 FED. ROAD DIST. NO. 1 ILLINOIS FED. AID PROJECT



TYPICAL SECTION AT STRUCTURE
 SEE DISTRICT 1 DETAIL TC-17 FOR ADDITIONAL INFORMATION
 NOT TO SCALE

* THIS WORK SHALL BE INCLUDED IN THE PAY ITEM
 "TRAFFIC CONTROL AND PROTECTION (EXPRESSWAYS)"

1

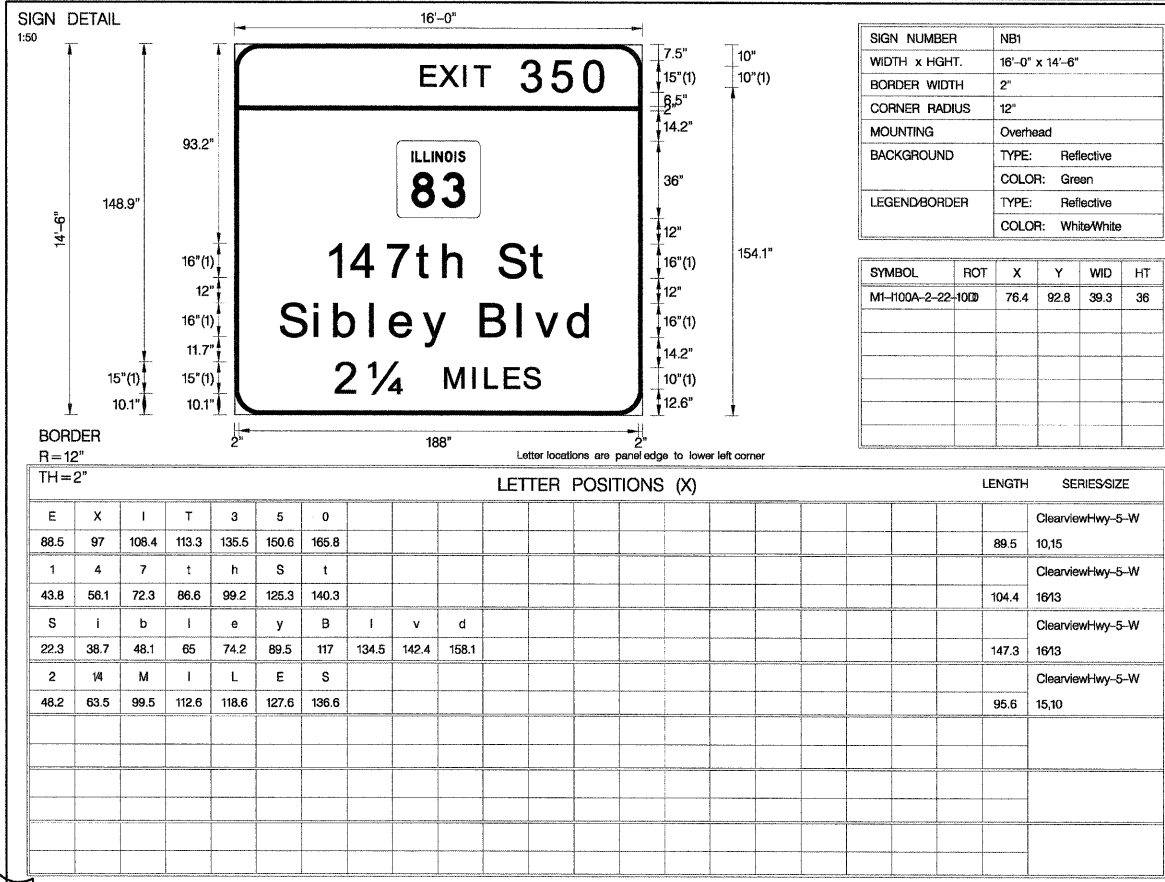


USER NAME = zkujewc	DESIGNED - DJB	REVISED - 09-06-11 NEW SHEET
PLOT SCALE = 50.00' / IN.	DRAWN - ENTRAN	REVISED -
PLOT DATE = 08/25/2011	CHECKED - TMH	REVISED -
	DATE - 08/25/11	REVISED -

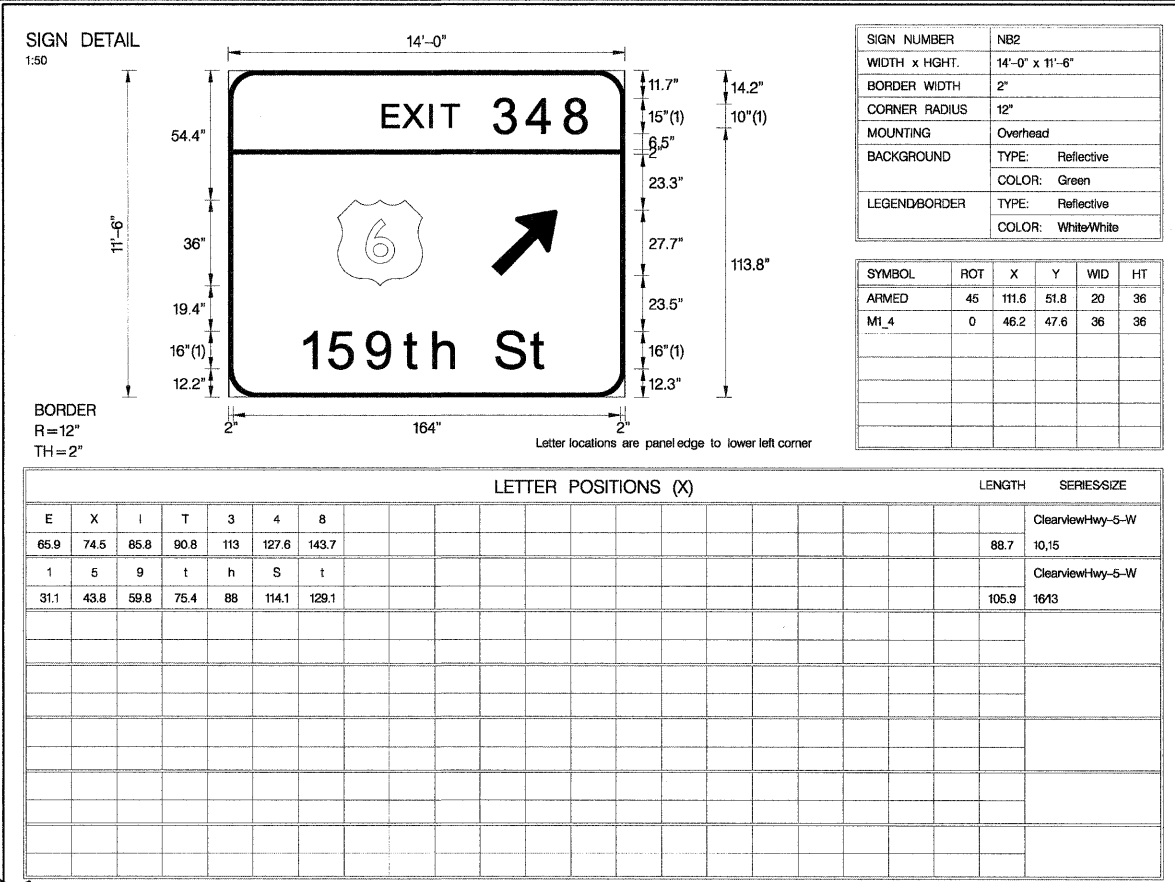
STATE OF ILLINOIS
DEPARTMENT OF TRANSPORTATION

FAI ROUTE 57 (INTERSTATE 57) AT FAU ROUTE 3778 (CRAWFORD AVENUE)
I-57 MOT DETAILS
 SCALE: 50.00' / IN. SHEET NO. OF SHEETS STA. TO STA.

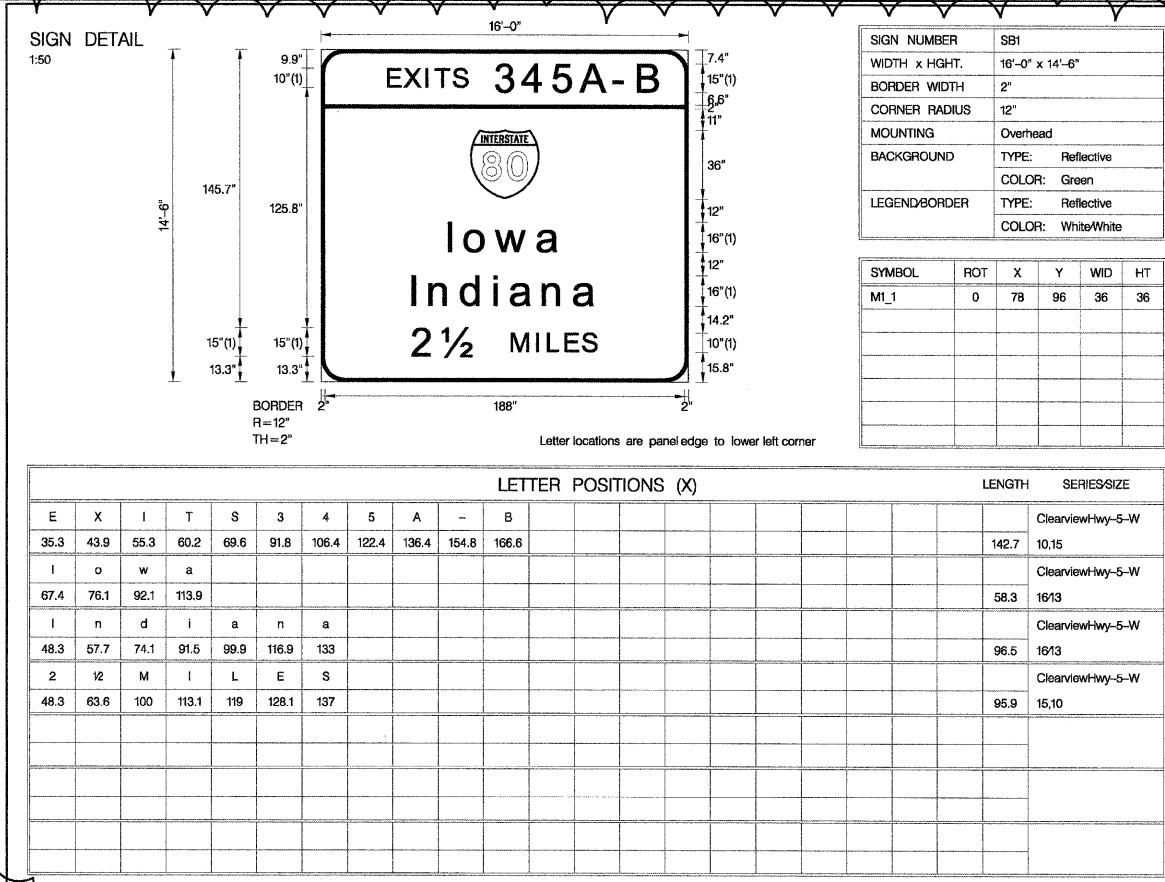
F.A.I. RTE. 57	SECTION 1112.1B	COUNTY COOK	TOTAL SHEETS 75	SHEET NO. 18A
				CONTRACT NO. 60863
FED. ROAD DIST. NO. 1 ILLINOIS FED. AID PROJECT				



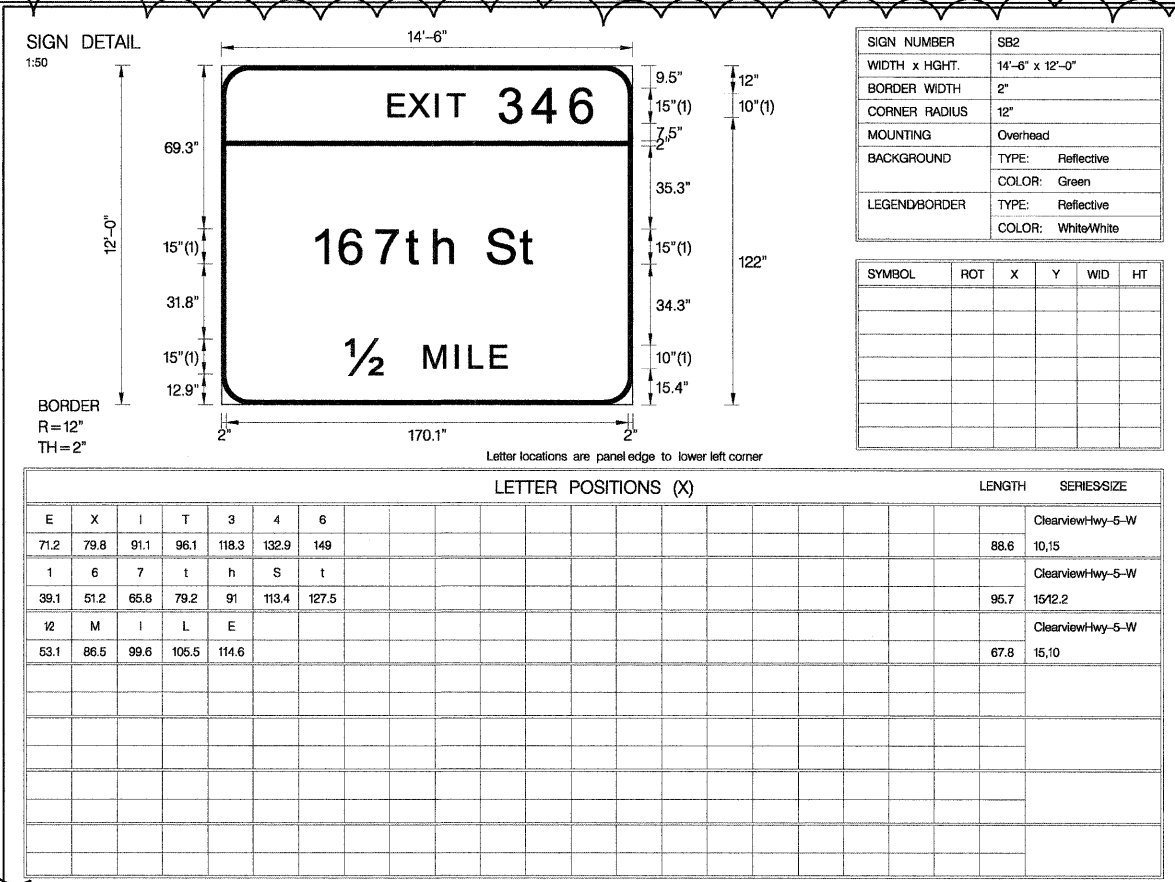
PROPOSED BRIDGE MOUNT SIGN



PROPOSED BRIDGE MOUNT SIGN



PROPOSED BRIDGE MOUNT SIGN



PROPOSED BRIDGE MOUNT SIGN

FILE NAME = G:\pvc\jeet\2102155_004\CADD\Civil\Sheet\0168663-17\ht-signs.dgn



USER NAME = zku_jmc
 PLOT SCALE = 50.00' / IN.
 PLOT DATE = 08/25/2011

DESIGNED - DJB
 DRAWN - ENTRAN
 CHECKED - TMH
 DATE - 08/25/11

REVISED - 09-06-11 REV.
 REVISED -
 REVISED -
 REVISED -

STATE OF ILLINOIS
 DEPARTMENT OF TRANSPORTATION

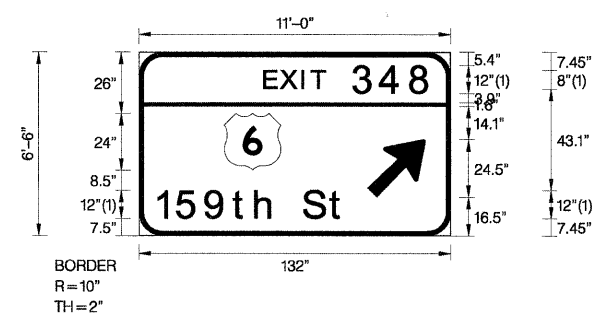
FAI ROUTE 57 (INTERSTATE 57) AT FAU ROUTE 3778 (CRAWFORD AVENUE)
 SIGNING DETAILS

SCALE: 60.00' / IN. SHEET NO. OF SHEETS STA. TO STA.

F.A.I. RTE.	SECTION	COUNTY	TOTAL SHEETS	SHEET NO.
57	1112.1B	COOK	75	21

CONTRACT NO. 60863
 FED. ROAD DIST. NO. 1 ILLINOIS FED. AID PROJECT

SIGN DETAIL
1:50



Panel Style: guide_exp_advance_a_ssi
Dimensions are in inches tenths

Letter locations are panel edge to lower left corner

SIGN NUMBER	TempNB01
WIDTH x HGHT.	11'-0" x 6'-6"
BORDER WIDTH	2"
CORNER RADIUS	10"
MOUNTING	Ground
BACKGROUND	TYPE: Reflective COLOR: Green
LEGEND/BORDER	TYPE: Reflective COLOR: White/White

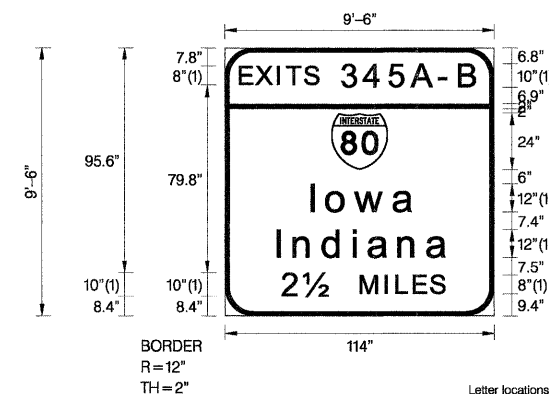
SYMBOL	ROT	X	Y	WID	HT
M1_4	0	36.1	28	24	24
ARMED	45	96.7	16.5	20	31.5

LETTER POSITIONS (X)

E	X	I	T	S	A	B	LENGTH	SERIES/SIZE
53.5	60.3	69.4	73.4	91.1	102.8	115.7	71	Clearview/hwy-5-W 8,12
1	5	9	t	h	S	t	80.2	Clearview/hwy-5-W 129.8

TEMPORARY SIGN
TO BE INSTALLED AT APPROXIMATELY STA. 149+00 (RT)
TO BE PAID FOR AS "TEMPORARY INFORMATION SIGNING"

SIGN DETAIL
1:50



SIGN NUMBER	TempSB01
WIDTH x HGHT.	9'-6" x 9'-6"
BORDER WIDTH	2"
CORNER RADIUS	12"
MOUNTING	Ground
BACKGROUND	TYPE: Reflective COLOR: Green
LEGEND/BORDER	TYPE: Reflective COLOR: White/White

SYMBOL	ROT	X	Y	WID	HT
M1_1	0	45	62.3	24	24

Letter locations are panel edge to lower left corner

LETTER POSITIONS (X)

E	X	I	T	S	A	B	LENGTH	SERIES/SIZE				
6.7	13.5	22.6	26.6	34.1	49.9	59.6	70.2	79.6	91.9	99.7	100.6	8,10
1	o	w	a									Clearview/hwy-5-W 43.7
37.1	43.6	55.6	72									129.8
1	n	d	i	a	n	a						Clearview/hwy-5-W 72.4
22.8	29.8	42.1	55.1	61.5	74.2	86.3						129.8
2	l	M	I	L	E	S						Clearview/hwy-5-W 68.5
24.7	33.6	57.6	68.3	73.1	80.3	87.5						10.8

TEMPORARY SIGN
TO BE INSTALLED AT APPROXIMATELY STA. 151+00 (LT)
TO BE PAID FOR AS "TEMPORARY INFORMATION SIGNING"



USER NAME = 2kujowc
PLOT SCALE = 50.00' / IN.
PLOT DATE = 08/26/2011

DESIGNED - DJB
DRAWN - ENTRAN
CHECKED - TMH
DATE - 08/25/11

REVISED - 09-06-11 NEW SHEET
REVISED -
REVISED -
REVISED -

STATE OF ILLINOIS
DEPARTMENT OF TRANSPORTATION

FAI ROUTE 57 (INTERSTATE 57) AT FAU ROUTE 3778 (CRAWFORD AVENUE)
SIGNING DETAILS
SCALE: 50.00' / IN. SHEET NO. OF SHEETS STA. TO STA.

F.A.I. RTE. 57 SECTION 1112.1B COUNTY COOK TOTAL SHEETS 75 SHEET NO. 21A CONTRACT NO. 60863
FED. ROAD DIST. NO. 1 ILLINOIS FED. AID PROJECT



GENERAL NOTES

SPECIFICATIONS:

DESIGN: AASHTO Standard Specifications for Structural Supports for Highway Signs, Luminaires and Traffic Signals. ("AASHTO Specifications") (2)

CONSTRUCTION: Current (at time of letting) Illinois Department of Transportation Standard Specifications for Road and Bridge Construction, Supplemental Specifications and Special Provisions. ("Standard Specifications")

LOADING: 90 M.P.H. WIND VELOCITY

WALKWAY LOADING: Dead load plus 500 lbs. concentrated live load.

MINIMUM CLEARANCE: 3" greater than bridge members at all locations. (All Obstructions)

WELDING: All welds to be continuous unless otherwise shown. All welding to be done in accordance with current AWS D1.1 Structural Welding Code (Steel) and the Standard Specifications.

MATERIALS: All Structural Steel Pipe shall be ASTM A53 Grade B with a minimum yield of 35,000 p.s.i., or A500 Grade B or C with a minimum yield of 46,000 p.s.i. If A500 pipe is substituted for A53, then the outside diameter shall be as detailed and wall thickness greater than or equal to A53.

All Structural Steel Plates and Shapes shall conform to AASHTO M270 Gr. 36, Gr. 50 (M183, M223 Gr. 50).

HIGH STRENGTH BOLTS: All bolts, washers, nuts and locknuts shall satisfy the requirements of ASTM designation A307 unless noted as "H.S." which shall require AASHTO M164 (A325), ASTM A449, or approved alternate. All fasteners shall be hot dip galvanized per AASHTO M232 unless otherwise specified.

GALVANIZING: All Steel Grating, Plates, Shapes and Pipe shall be Hot Dip Galvanized after fabrication in accordance with AASHTO M111. Painting is not permitted.

ANCHOR RODS: All-threaded rod shall conform to ASTM F1554 Grade 105, 3/4" ϕ x 12" long, each with one plate washer and locknut and be hot dip galvanized per AASHTO M232. They shall be either cast into the concrete or epoxy grouted in accordance with Section 584 of the Standard Specifications. Minimum embedment in concrete shall be 9".

(1) Bracket spacing $g \leq 6'-0"$, max. Spacing shall be uniform if possible but may vary $\pm 6"$ to miss existing obstruction (rail post, light poles, web stiffeners, splice plates, etc.). Adjust bracket lengths accordingly on skewed structures.

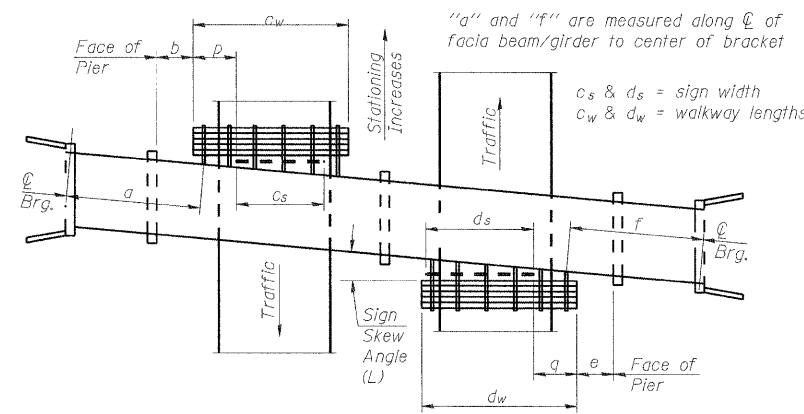
(2) Any design modifications shall be based on the current version of applicable specifications and submitted for the Engineer's approval.

(3) Unit price includes grating, handrail, brackets, supports, anchor bolts, fasteners, fabrication, delivery, erection, field drilling and other necessary items. Limits of payment are based on grating length (c_w , d_w) unless otherwise specified. For Safety Chain Details and Details D, F and G, see Base Sheet BM-4.

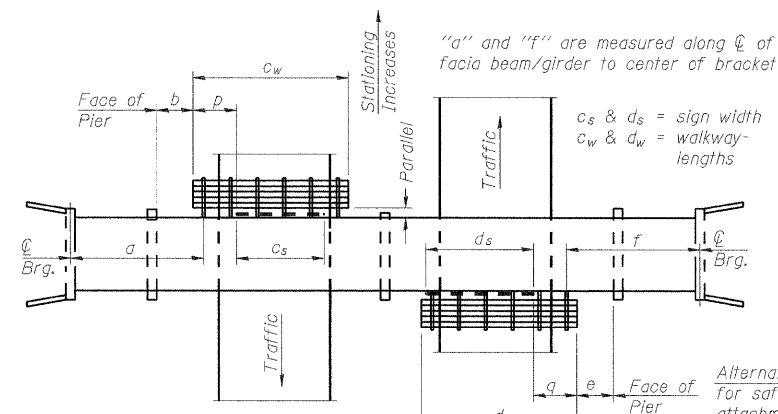
(4) If walkway bracket at safety chain location is behind sign, add angle to bracket. See detail on Base Sheet BM-4.

TOTAL BILL OF MATERIAL

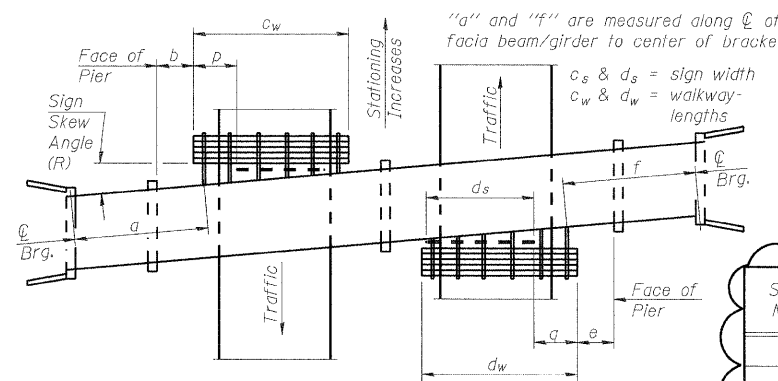
(3) OVERHEAD SIGN STRUCTURE - BRIDGE MOUNTED	Foot	60.5
----------------------------------------------	------	-------------



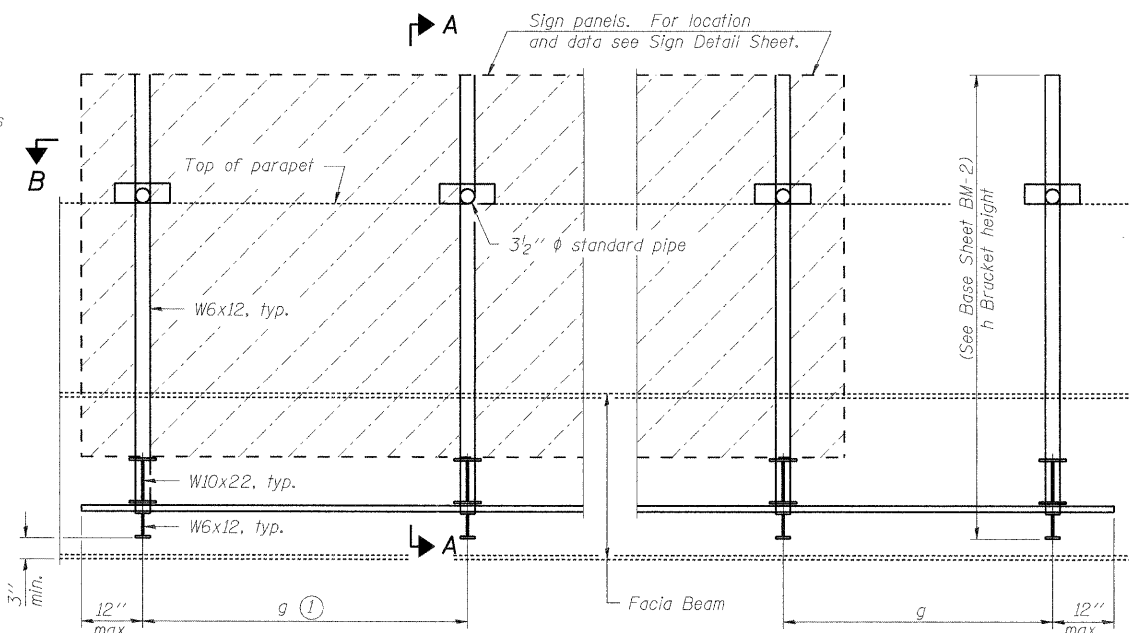
PLAN
(Left Sign Skew > 15°)
WALKWAY AND HANDRAIL SKETCH
(Road plan beneath structure varies.)



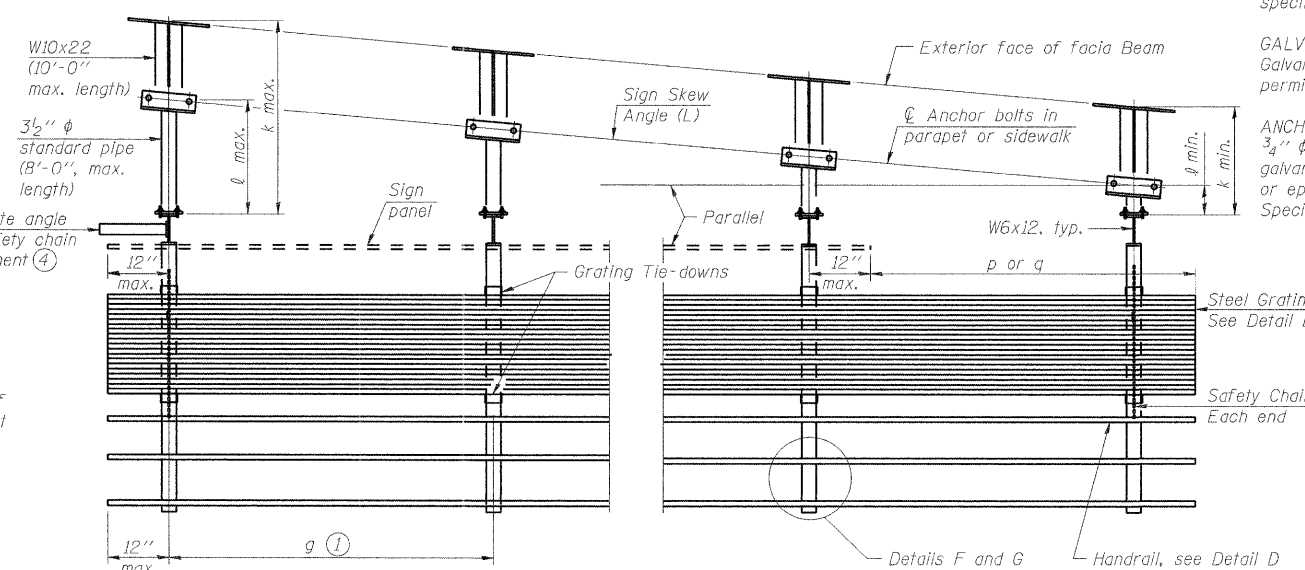
PLAN
(For Sign Skew $\leq 15^\circ$, all brackets constant)
WALKWAY AND HANDRAIL SKETCH
(Road plan beneath structure varies.)



PLAN
(Right Sign Skew > 15°)
WALKWAY AND HANDRAIL SKETCH
(Road plan beneath structure varies.)



TYPICAL FRONT ELEVATION
(With lights, safety chain and handrail omitted for clarity.)



SECTION B-B
(Shown: Left Sign Skew > 15°)

Structure Number	Sign Skew Angle (L) or (R)	Bridge Station	Bridge Structure Number	Contract Route Designation	a	b	c _s	c _w	d _s	d _w	e	f	g	No. of Brackets (Total)	p	q	Total Grating/Hndrl. Lengths (c _w + d _w)
NB1	12°35'05"	150+05	016-1015	FAI 57					16'-0"				42'-6" 5'-0"	4			
NB2	12°35'05"	150+05	016-1015	FAI 57					14'-0"				22'-10" 4'-4"	4			
SB1	12°35'05"	150+05	016-1015	FAI 57	45'-9"	16'-0"							4'-10"	4			
SB2	12°35'05"	150+05	016-1015	FAI 57	27'-2"	14'-6"							4'-6"	4			

Dimensions a, b, e, f & g may vary as approved by the Engineer, see (1).
When $c_w < c_s$ and/or $d_w < d_s$, use alternate brackets without walkway supports where applicable, see (3).

BM-1 1-20-11



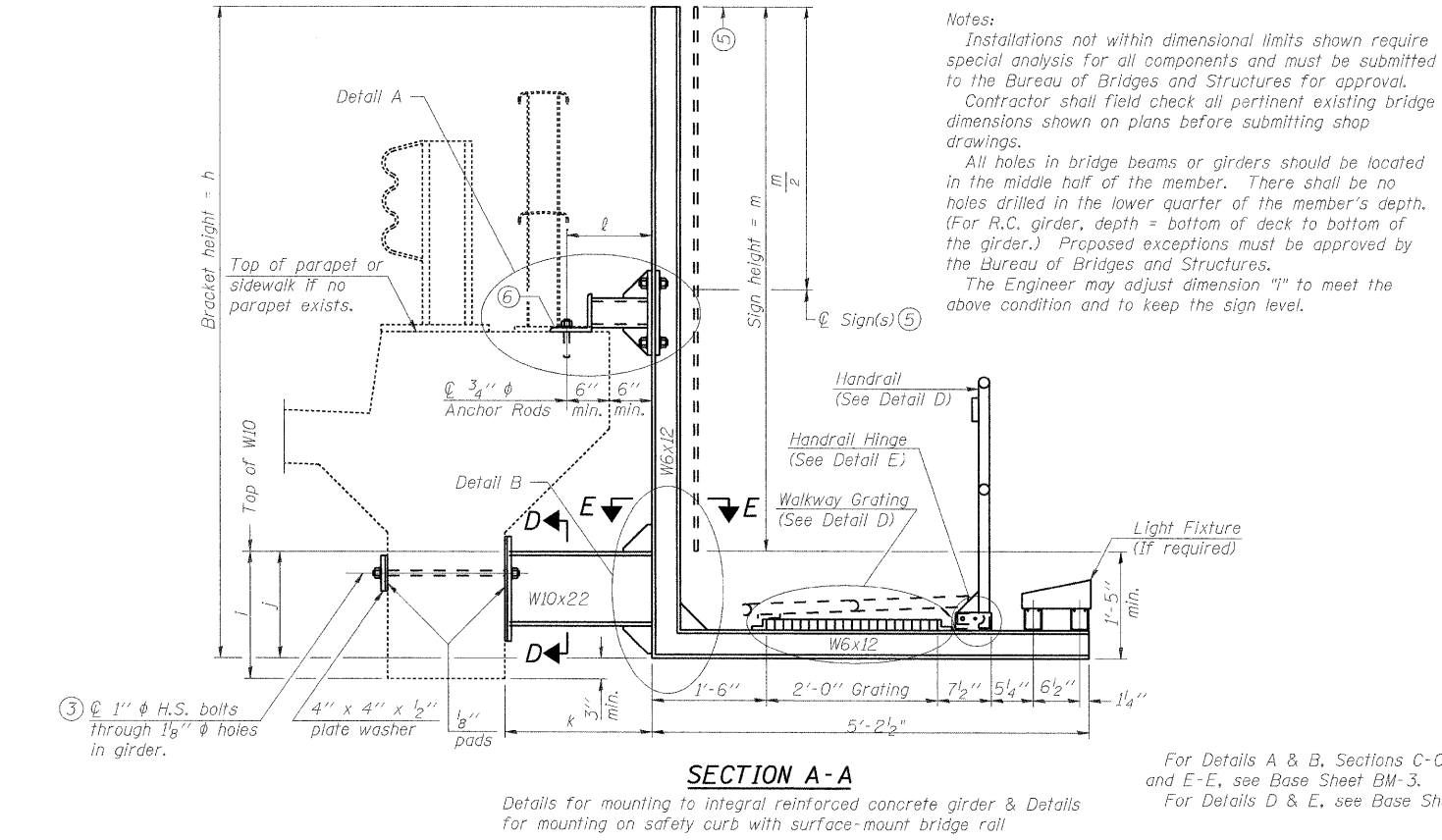
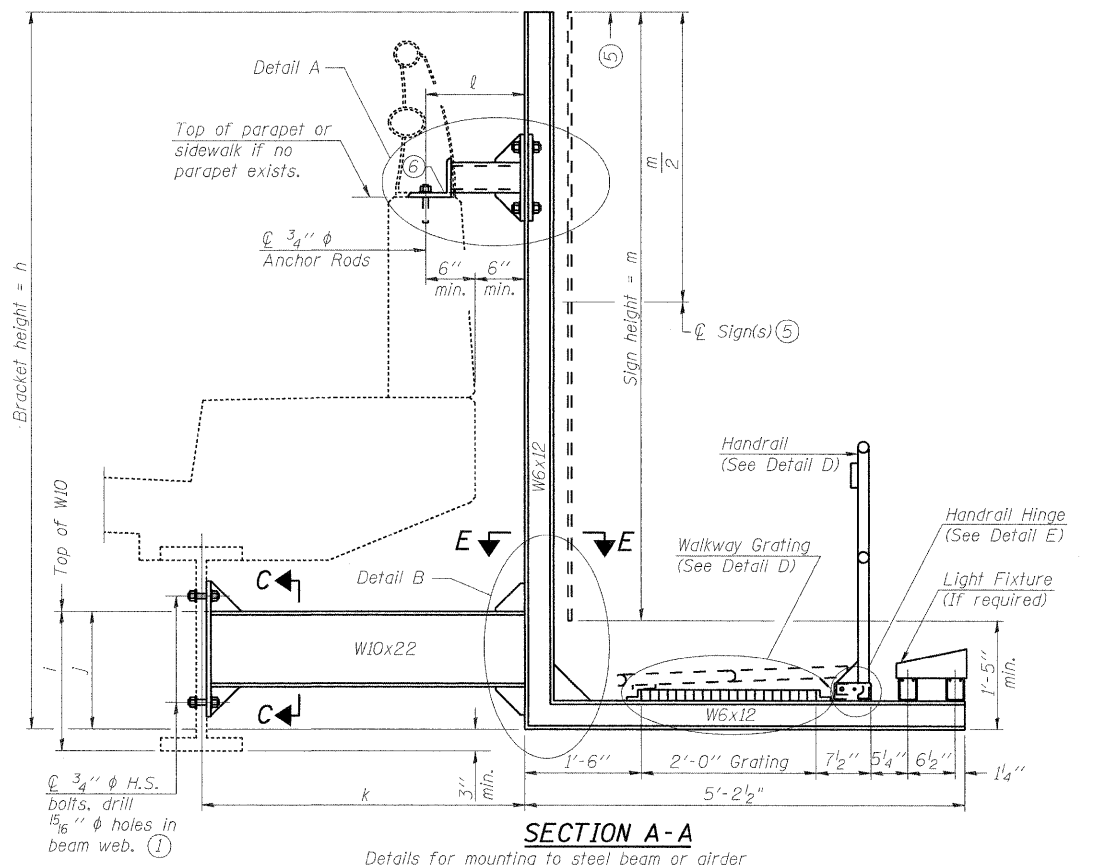
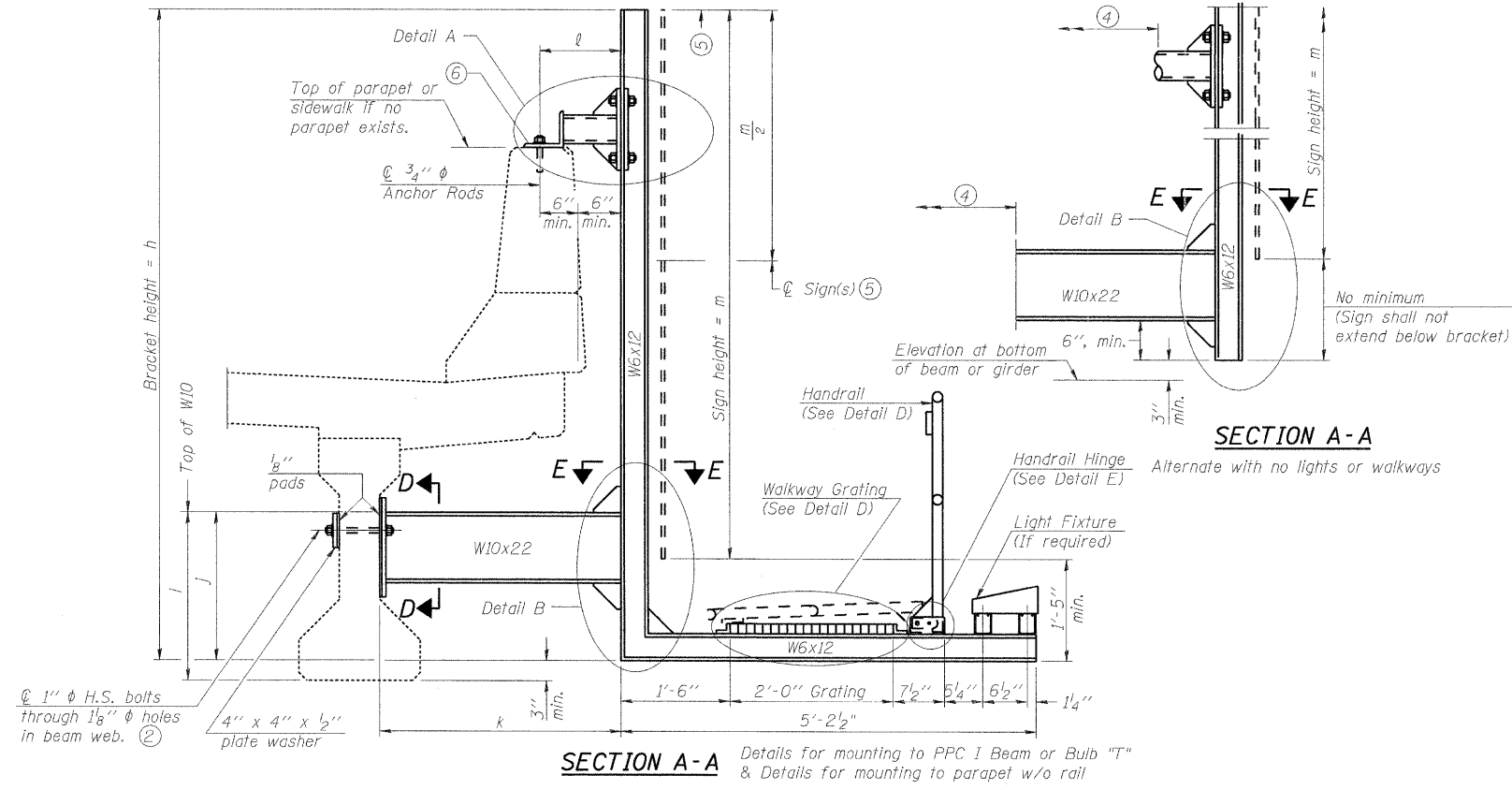
USER NAME = Zku_jawc	DESIGNED - DJB	REVISD - 09-06-11 REV.
PLOT SCALE = 5/8" = 1' - 0"	DRAWN - ENTRAN	REVISD -
PLOT DATE = 08/26/2011	CHECKED - TMH	REVISD -
	DATE - 08/25/11	REVISD -

STATE OF ILLINOIS
DEPARTMENT OF TRANSPORTATION

FAI ROUTE 57 (INTERSTATE 57) AT FAU ROUTE 3778 (CRAWFORD AVENUE)
BRIDGE MOUNT SIGN STRUCTURES - GENERAL PLAN AND ELEVATION

SCALE: 5/8" = 1' IN. SHEET NO. OF SHEETS STA. TO STA.

F.A.I. RTE. 57	SECTION 1112.1B	COUNTY COOK	TOTAL SHEETS 75	SHEET NO. 22
FED. ROAD DIST. NO. 1 ILLINOIS FED. AID PROJECT			CONTRACT NO. 60863	



- ① Holes in new steel members may be drilled in the fabrication shop or in the field. Field drill existing members.
- ② For new PPC I beams, holes shall be formed during casting. For existing PPC I beams, prestressing strand locations shall be determined and spaced to miss strands by 6", min. Minimize spalling during field drilling of existing beams.
- ③ For new construction, form holes. For existing RC beams, locate primary reinforcement and space holes to miss by 6", min. Minimize spalling and concrete fracturing/damage during field drilling of existing concrete. Spalls over 1/4" deep or beyond the coverage of the 4x4 plate washer shall be repaired with epoxy mortar before installing washer.
- ④ For attachment details of 3/2" pipe and W10x22, see other sections as applicable.
- ⑤ Sign shall not extend more than 6" above top of bracket, and this dimension may vary to keep sign level if bridge is on grade or vertical curve. Multiple signs of various heights shall share a common horizontal centerline and use equal bracket heights. If no sign is attached to a W6x12 vertical (bracket only supporting walkway), dimension h shall be the same as an adjacent bracket with a sign attached, unless Engineer specifically directs shorter brackets due to locational restraints on future uses. (See Detail A for minimum bracket height.)
- ⑥ For bridge mounted sign structures installed on new bridges with railing, during design, bracket spacing must be coordinated with railing post spacing and the Contractor must install upper brackets prior to railing installation. For bridge mounted sign structures installed on existing bridges with railing, during design, brackets spacing must be coordinated with railing post spacing and the Contractor must temporarily remove sections of railing to facilitate upper bracket installation. If it is determined during design that existing railings can't be removed, alternate upper connection details must be developed for the contract plans and approved by the Bureau of Bridges and Structures.

Structure Number	Station	h	i	j	k max. (10'-0" max.)	l max. (8'-0" max.)	m (15'-0" max.)
NB1	150+05	15'-11"	2'-3"	2'-0"	3'-6"	1'-0"	14'-6"
NB2	150+05	12'-11"	2'-3"	2'-0"	3'-6"	1'-0"	11'-6"
SB1	150+05	15'-11"	2'-3"	2'-0"	3'-6"	1'-0"	14'-6"
SB2	150+05	13'-5"	2'-3"	2'-0"	3'-6"	1'-0"	12'-0"

FILE NAME = G:\proj\212195_004\GADD\Civil\Sheet\1168683-19.sht; signed3.dgn

BM-2 1-20-11



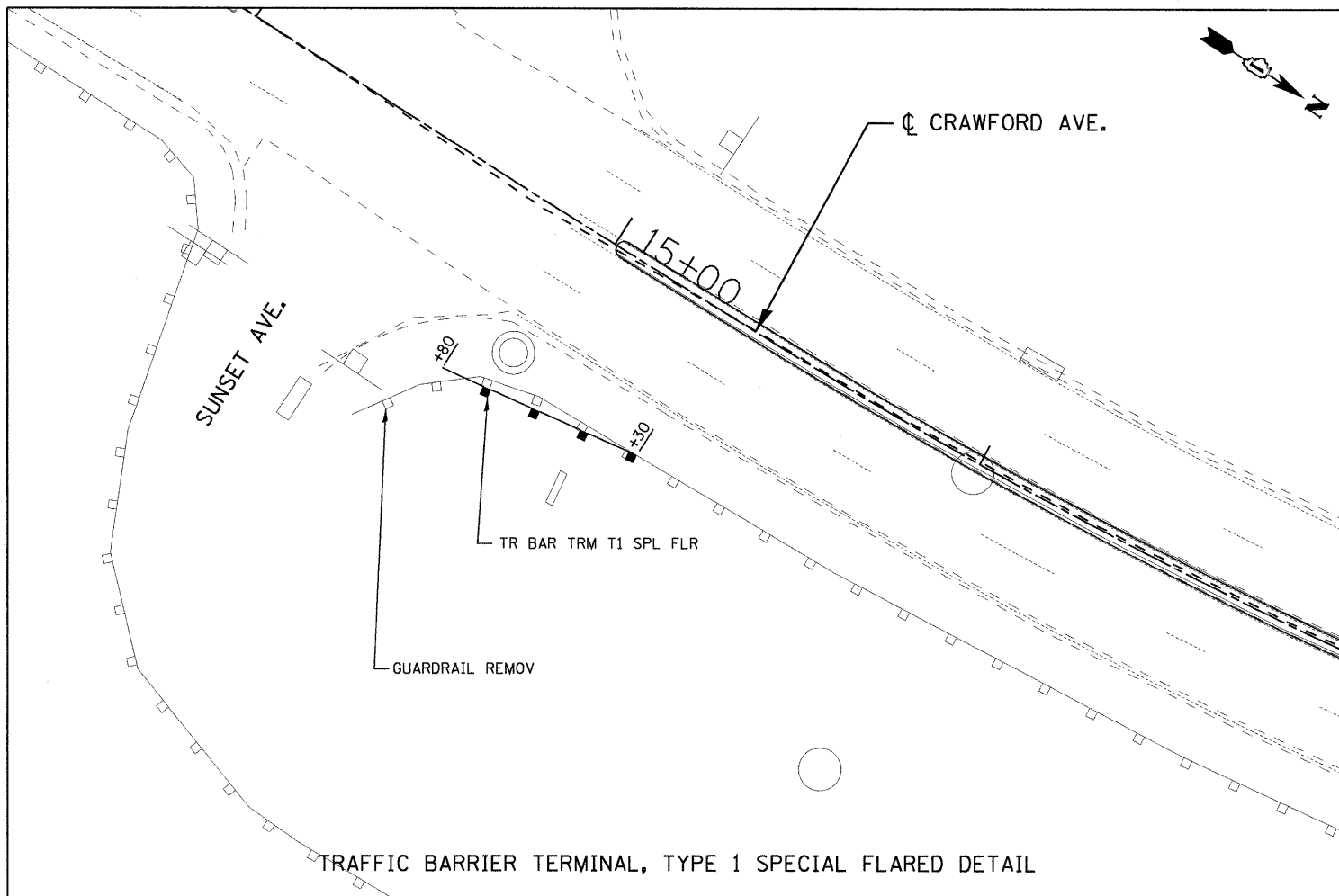
USER NAME = 2kujowc	DESIGNED - DJB	REVISED - 09-06-11 REV.
PLOT SCALE = 50.00' / IN.	DRAWN - ENTRAN	REVISED -
PLOT DATE = 08/26/2011	CHECKED - TMH	REVISED -
	DATE - 08/25/11	REVISED -

STATE OF ILLINOIS
DEPARTMENT OF TRANSPORTATION

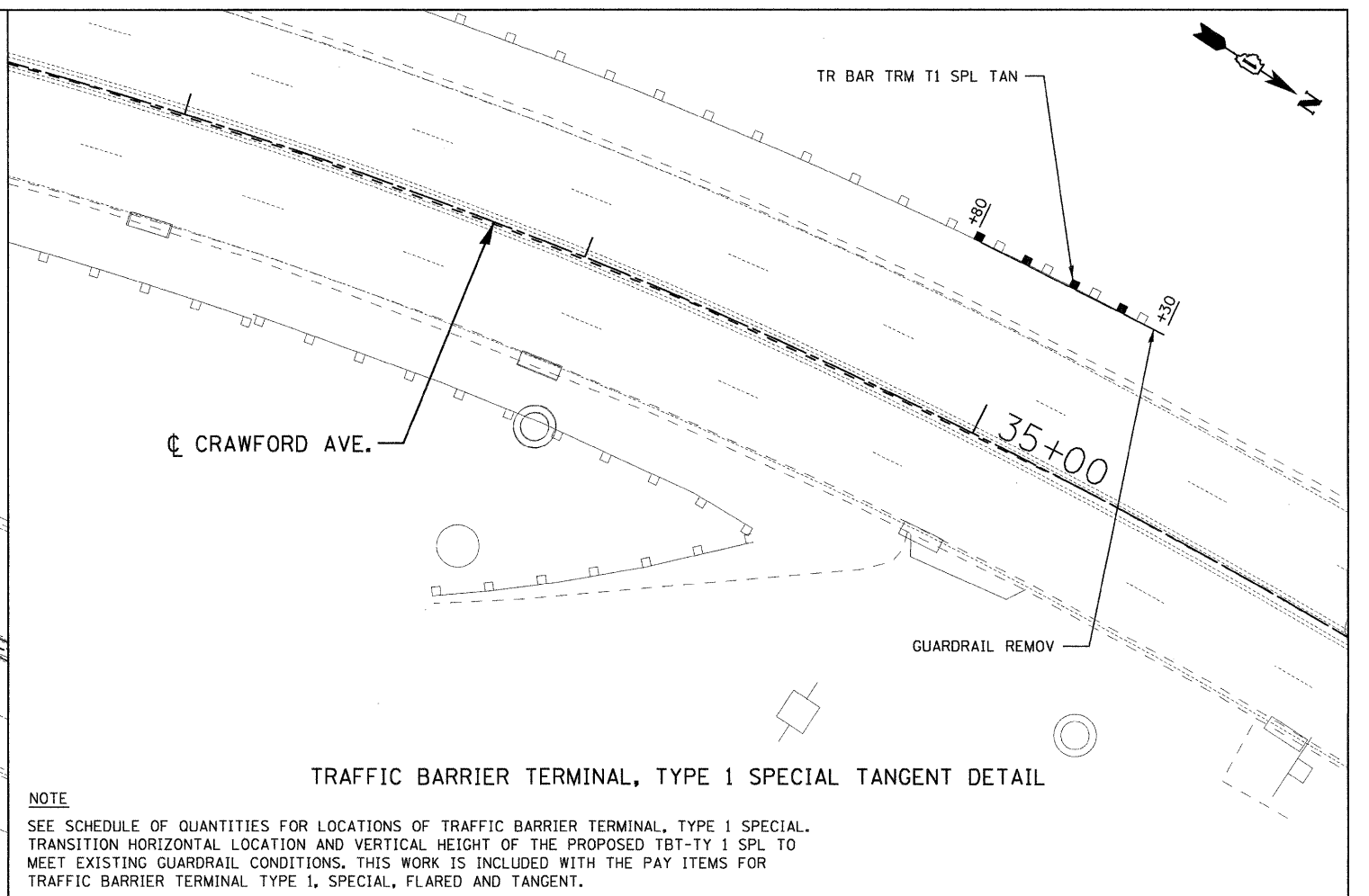
FAI ROUTE 57 (INTERSTATE 57) AT FAU ROUTE 3778 (CRAWFORD AVENUE)
BRIDGE MOUNT SIGN STRUCTURES - WALKWAY AND CONNECTION DETAILS

F.A.I. RTE. 57	SECTION 10N 1112.1B	COUNTY COOK	TOTAL SHEETS 75	SHEET NO. 23
SCALE: 50.00' / IN.		SHEET NO. OF SHEETS STA.		TO STA.
FED. ROAD DIST. NO. 1 ILLINOIS FED. AID PROJECT				

CONTRACT NO. 60863



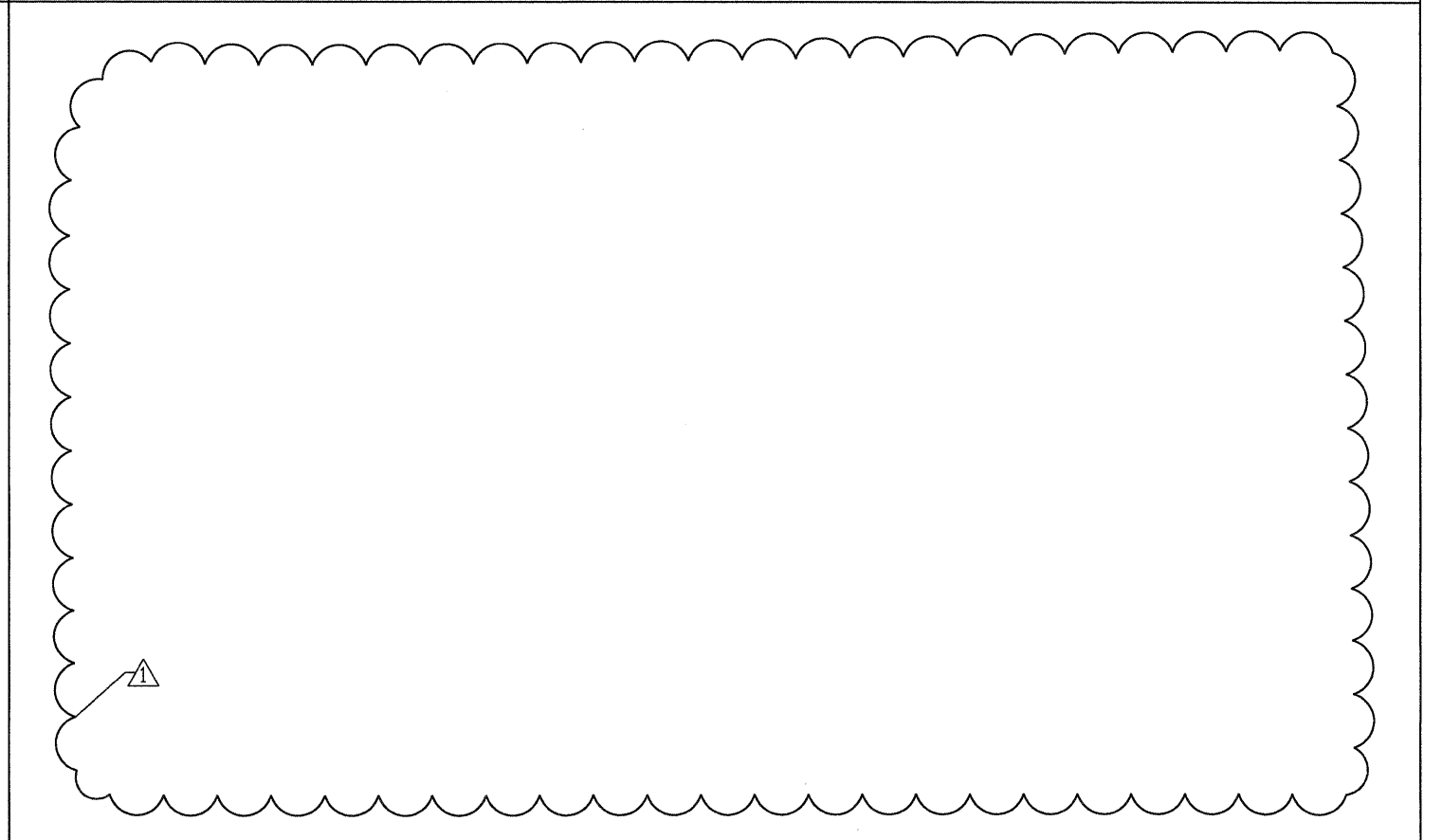
TRAFFIC BARRIER TERMINAL, TYPE 1 SPECIAL FLARED DETAIL



TRAFFIC BARRIER TERMINAL, TYPE 1 SPECIAL TANGENT DETAIL

NOTE

SEE SCHEDULE OF QUANTITIES FOR LOCATIONS OF TRAFFIC BARRIER TERMINAL, TYPE 1 SPECIAL. TRANSITION HORIZONTAL LOCATION AND VERTICAL HEIGHT OF THE PROPOSED TBT-TY 1 SPL TO MEET EXISTING GUARDRAIL CONDITIONS. THIS WORK IS INCLUDED WITH THE PAY ITEMS FOR TRAFFIC BARRIER TERMINAL TYPE 1, SPECIAL, FLARED AND TANGENT.



FILE NAME = G:\proj\proj\2102155_004\CAD\NC\11\Sh11\1108063-5\9aht-Rd\update\101.dgn



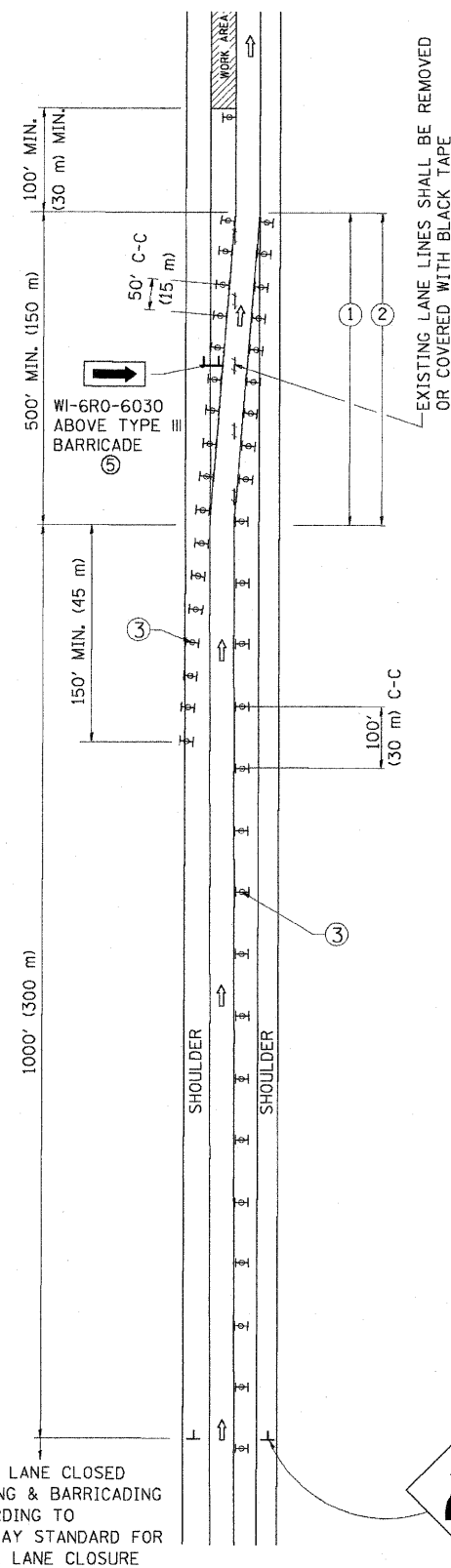
USER NAME = zkujewo	DESIGNED - DJB	REVISED - 09-06-11 REV.
PLOT SCALE = 20.00' / IN.	DRAWN - ENTRAN	REVISED -
PLOT DATE = 08/26/2011	CHECKED - TMH	REVISED -
	DATE - 08/25/11	REVISED -

**STATE OF ILLINOIS
DEPARTMENT OF TRANSPORTATION**

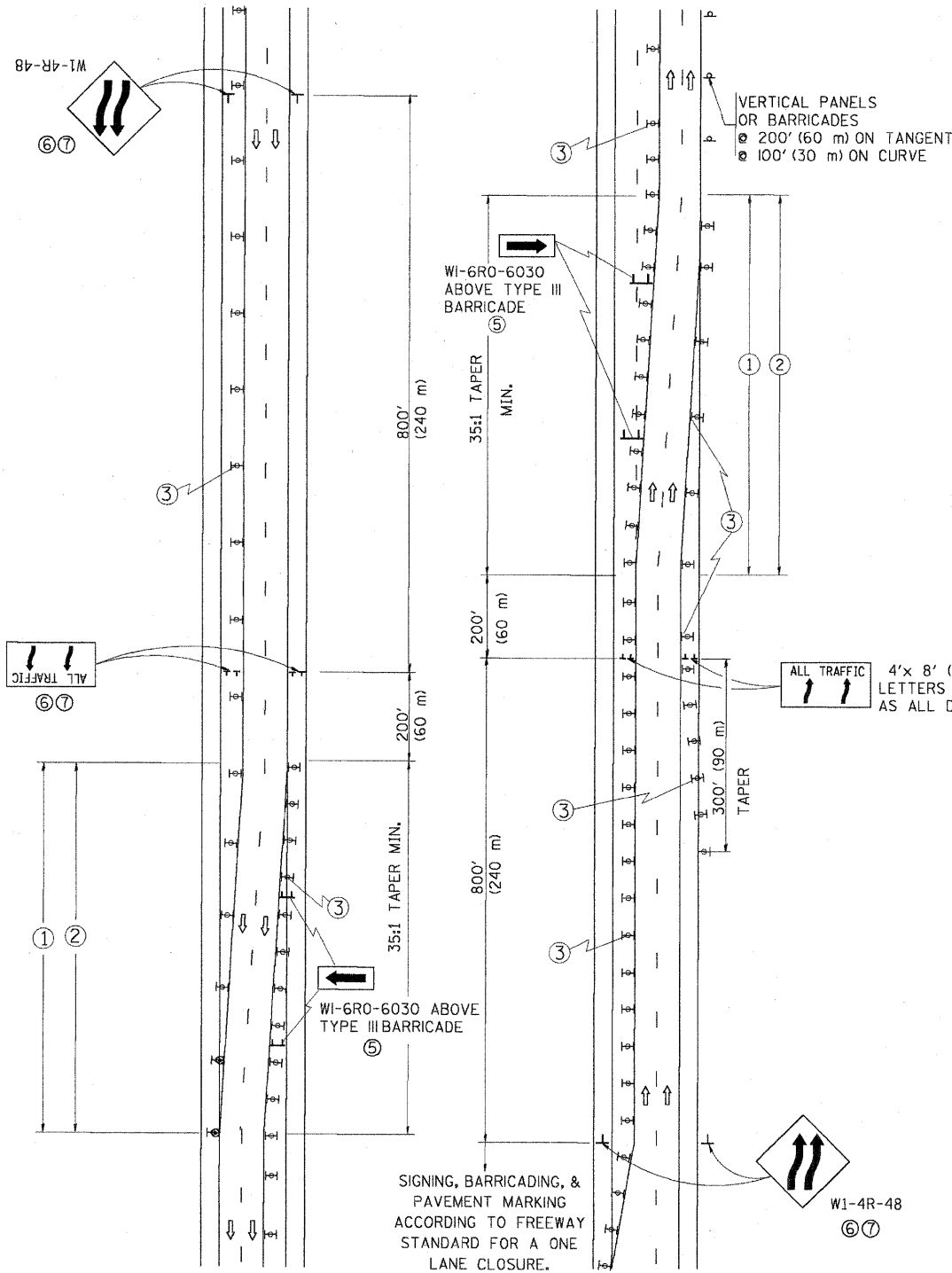
**FAI ROUTE 57 (INTERSTATE 57) AT FAU ROUTE 3778 (CRAWFORD AVENUE)
ROADWAY DETAILS**

F.A.I. RTE. 57	SECTION 1112.1B	COUNTY COOK	TOTAL SHEETS 75	SHEET NO. 65
CONTRACT NO. 60863				
SCALE: 20.00' / IN. SHEET NO. OF SHEETS STA. TO STA. FED. ROAD DIST. NO. 1 ILLINOIS FED. AID PROJECT				

SINGLE LANE WEAVE



MULTI-LANE WEAVE

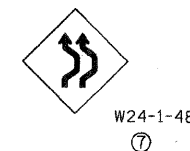


GENERAL NOTES

- EXISTING CONFLICTING PAVEMENT MARKING LINES SHALL BE REMOVED. PAVEMENT MARKING REMOVAL SHALL NOT BE REQUIRED FOR SINGLE LANE WEAVES UNDER 24 HOURS IN DURATION.
- CONTINUOUS REFLECTIVE TEMPORARY PAVEMENT MARKING TAPE SHALL BE PLACED THROUGHOUT THE TAPER AND FOR 300' (90 m) ALONG SIDE THE WORK AREA WHERE THE CLOSURE TIME IS GREATER THAN FOURTEEN DAYS. THE LEFT EDGE LINE SHALL BE YELLOW AND THE RIGHT EDGE LINE SHALL BE WHITE. FOR MULTI-LANE WEAVES LANE LINES SHALL BE 5 INCH, 10'-30' (3 m-9 m) SKIP DASH, WHITE.
- PLASTIC DRUMS WITH STEADY BURN LIGHTS AT 50' (15 m) C-C SPACING IN TAPERS AND 100' (30 m) C-C SPACING IN TANGENTS.
- ALL SIGNS SHALL BE POST MOUNTED IF THE CLOSURE TIME EXCEEDS FOUR DAYS.
- IF A TYPE III BARRICADE WITH AN ATTACHED SIGN PANEL WHICH MEETS NCHRP 350 IS NOT AVAILABLE, THE SIGNS MAY BE MOUNTED ON NCHRP 350 TEMPORARY SIGN SUPPORTS. TYPE III BARRICADES MAY BE OMITTED FOR SINGLE-LANE WEAVES UNDER 24-HOURS IN DURATION. W1-6 SIGNS WILL STILL BE REQUIRED. IF THE WIDTH OF OFFSET IS LESS THAN 6' THEN THE TYPE III BARRICADE WITH ATTACHED ARROW SIGN PANEL CAN BE ELIMINATED IN THE TAPER AREAS.
- WHEN THE LENGTH OF THE SHIFTED SEGMENT (DISTANCE BETWEEN WEAVE POINTS) IS LESS THAN 1500', DOUBLE REVERSE CURVE SIGNS (W24-1) SHOULD BE USED INSTEAD OF THE REVERSE CURVE (W1-4) SIGNS. ARROWS ON THE 4'X8' "ALL TRAFFIC" SIGNS SHALL BE THE SAME SHAPE.
- THE NUMBER OF ARROWS ON THESE SIGNS SHALL MATCH THE NUMBER OF LANES OPEN TO TRAFFIC.

SYMBOLS

- DIRECTION OF TRAFFIC
- WORK AREA
- SIGN ON PORTABLE OR PERMANENT SUPPORT
- TYPE II BARRICADE OR DRUM WITH MONO-DIRECTIONAL STEADY BURNING LIGHT



9/07/11 REV NEW SHEET

ALL DIMENSIONS ARE IN INCHES (MILLIMETERS) UNLESS OTHERWISE SHOWN

FILE NAME = W:\data\td\22x34\cc09.dgn	USER NAME = lmjao	DESIGNED - DWS	REVISED - JAF 01-03	STATE OF ILLINOIS DEPARTMENT OF TRANSPORTATION	TRAFFIC CONTROL DETAILS FOR FREEWAY SINGLE & MULTI-LANE WEAVE		F.A.P. RTE. 57	SECTION 1112.1B	COUNTY COOK	TOTAL SHEETS 75	SHEET NO. 68A
PLOT SCALE = 50,000' / IN.	CHECKED	DATE - 02-87	REVISED - JAF 02-06		SCALE: NONE	SHEET NO. 1 OF 1 SHEETS	STA.	TO STA.	TC-09		CONTRACT NO. 60863
PLOT DATE = 1/26/2012	DATE - 02-87	REVISED - SPB 01-07	REVISED - SPB 12-09				FED. ROAD DIST. NO. 1 ILLINOIS FED. AID PROJECT				