

***SB FACE OF PARAPET**

Location	Station	Offset	Theoretical Grade Elevations
S. End of S. Appr. Pav't	22+37.65	-33.51	661.15
A1	22+47.85	-33.47	661.34
A2	22+58.04	-33.39	661.52
S. End of Vaulted Span	22+68.20	-33.27	661.70
B1	22+78.30	-33.35	661.87
B2	22+88.38	-33.42	662.02
N. End of Vaulted Span	22+99.11	-33.46	662.18

SB CURB LINE

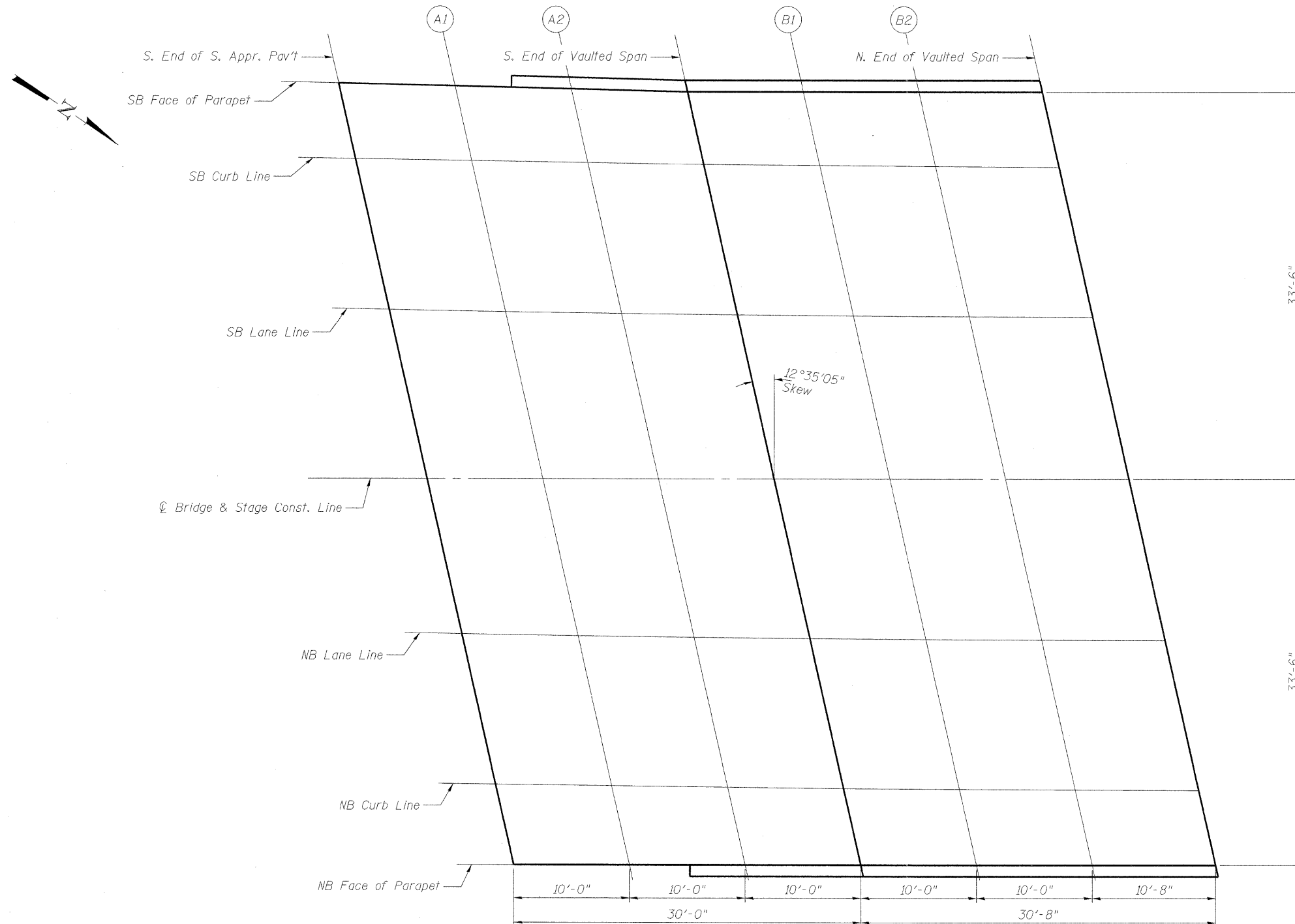
Location	Station	Offset	Theoretical Grade Elevations
S. End of S. Appr. Pav't	22+39.27	-27.01	661.46
A1	22+49.42	-27.05	661.62
A2	22+59.56	-27.05	661.79
S. End of Vaulted Span	22+69.68	-27.01	661.95
B1	22+79.77	-27.02	662.10
B2	22+89.85	-27.00	662.24
N. End of Vaulted Span	23+00.59	-26.97	662.39

SB LANE LINE

Location	Station	Offset	Theoretical Grade Elevations
S. End of S. Appr. Pav't	22+42.48	-14.02	662.05
A1	22+52.58	-14.02	662.19
A2	22+62.66	-14.02	662.32
S. End of Vaulted Span	22+72.73	-14.01	662.44
B1	22+82.79	-14.01	662.56
B2	22+92.83	-14.01	662.67
N. End of Vaulted Span	23+03.53	-14.00	662.78

☉ BRIDGE & STAGE CONST. LINE

Location	Station	Offset	Theoretical Grade Elevations
S. End of S. Appr. Pav't	22+46.04	0.55	662.65
A1	22+56.03	0.39	662.74
A2	22+66.03	0.26	662.83
S. End of Vaulted Span	22+76.03	0.16	662.91
B1	22+86.03	0.10	662.99
B2	22+96.03	0.05	663.06
N. End of Vaulted Span	23+06.70	0.02	663.13



NB LANE LINE

Location	Station	Offset	Theoretical Grade Elevations
S. End of S. Appr. Pav't	22+49.27	13.96	663.08
A1	22+59.26	13.96	663.13
A2	22+69.24	13.97	663.17
S. End of Vaulted Span	22+79.22	13.98	663.21
B1	22+89.20	13.98	663.24
B2	22+99.19	13.99	663.26
N. End of Vaulted Span	23+09.84	13.99	663.28

NB CURB LINE

Location	Station	Offset	Theoretical Grade Elevations
S. End of S. Appr. Pav't	22+52.37	26.95	663.47
A1	22+62.30	26.93	663.47
A2	22+72.25	26.94	663.47
S. End of Vaulted Span	22+82.20	26.97	663.46
B1	22+92.15	26.97	663.44
B2	23+02.12	26.98	663.42
N. End of Vaulted Span	23+12.76	27.01	663.39

***NB FACE OF PARAPET**

Location	Station	Offset	Theoretical Grade Elevations
S. End of S. Appr. Pav't	22+54.02	33.92	663.67
A1	22+63.91	33.79	663.64
A2	22+73.81	33.68	663.61
S. End of Vaulted Span	22+83.72	33.61	663.58
B1	22+93.65	33.56	663.54
B2	23+03.59	33.53	663.49
N. End of Vaulted Span	23+14.21	33.51	663.43

*Note: Elevations at face of parapet are given at the theoretical top of roadway surface which is the projection of the roadway slope beneath the superimposed sidewalk. See Sheet S9 for detail.

PLAN

FILE NAME = g:\project\2102195_004\road\structure\sh\1161615_60863_008.Appr Elev Idgn



USER NAME = Zsayerb
 PLOT SCALE = N/A
 PLOT DATE = 8/5/2011

DESIGNED - TWO
 CHECKED - BHS
 DRAWN - TWO
 CHECKED - GSP

REVISED -
 REVISED -
 REVISED -
 REVISED -

**STATE OF ILLINOIS
 DEPARTMENT OF TRANSPORTATION**

**TOP OF SOUTH APPROACH ELEVATIONS
 STRUCTURE NO. 016-1015**

SHEET NO. 58 OF 36 SHEETS

F.A.I. RTE.	SECTION	COUNTY	TOTAL SHEETS	SHEET NO.
57	1112.1B	COOK	75	35
CONTRACT NO. 60863				

FED. ROAD DIST. NO. 1 | ILLINOIS FED. AID PROJECT