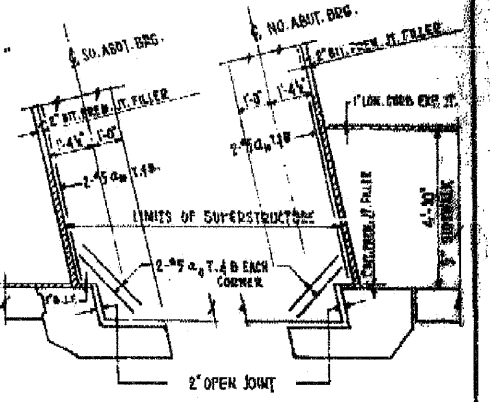
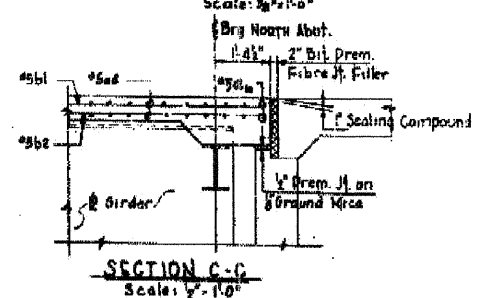
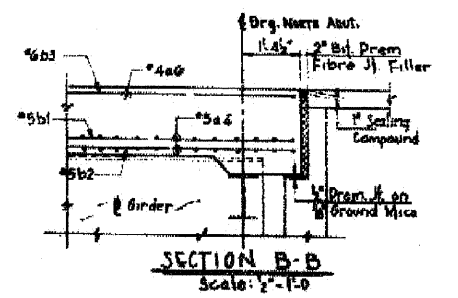
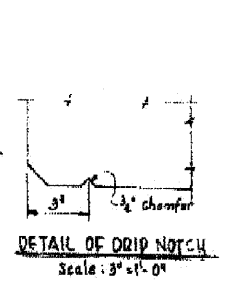
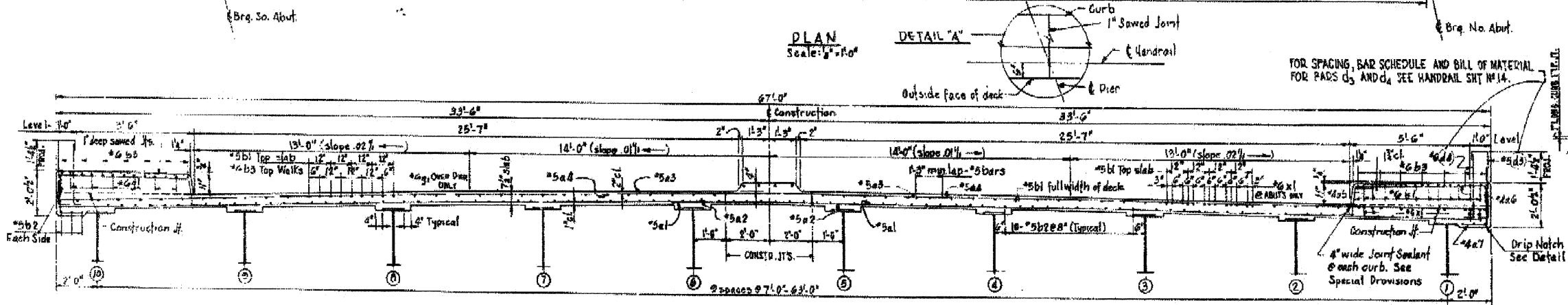


COUNTY SPECIFICATIONS			
MARK	NO.	SIZE	DESCRIPTION
a1	343	5	28-5
a2	343	4	31-9
a3	343	3	38-0
a4	325	5	28-0
a5	346	4	3-5
a6	28	2	6-2
a7	346	4	3-0
a8	22	5	33-0
a9	12	5	4-0
a10	8	5	38-9
a11	16	5	2-5
b1	340	5	35-5
b2	588	5	23-10
b3	70	6	35-9
c1	78	2	31-6
c2	376	2	2-5

Slabs & Concrete: 377.0 cu yds  
 Reinforcement Bars: 96,000.0 lbs  
 Protective Coat: 1,346.0 sq yds



FOR SPACING, BAR SCHEDULE AND BILL OF MATERIAL FOR PADS d3 AND d4 SEE HANDRAIL SH1 #14.

REVISIONS		
DATE	BY	DESCRIPTION

**DEPARTMENT OF HIGHWAYS**  
 COOK COUNTY, ILLINOIS  
 RICHARD B. DEPLANE  
 COUNTY ENGINEER  
 ANDREW V. PLUMMER  
 PROJECT ENGINEER

**DETAILS OF BRIDGE SUPERSTRUCTURE**  
**CRAWFORD AVE. GRADE SEPARATION**  
**OVER**  
**DAN RYAN EXPRESSWAY, WEST LEG**

PROJECT: 1-5771541303  
 SUBMITTED: May 17, 1967  
 DRAWN BY: [Signature]  
 CHECKED BY: [Signature]

Blasquez	May 19, 1967	Project Eng.	County Highway	Sheet No.	Scale	Revised
57	068-1112.1	4	63	58.12.42-3		

FILE NAME: g:\n\project\2102155\_004\road\structure\sh1\1161015\_008663\_002\_Existing\_2.dgn



USER NAME = 29agarb  
 PLOT SCALE = N/A  
 PLOT DATE = 8/5/2011

DESIGNED - TWO  
 CHECKED - BHS  
 DRAWN - TWO  
 CHECKED - GSP

REVISED -  
 REVISED -  
 REVISED -  
 REVISED -

**STATE OF ILLINOIS**  
**DEPARTMENT OF TRANSPORTATION**

EXISTING BRIDGE PLANS (2 OF 6)  
 STRUCTURE NO. 016-1015  
 SHEET NO. S32 OF 36 SHEETS

F.A.I. RTE.	SECTION	COUNTY	TOTAL SHEETS	SHEET NO.
57	1112.1B	COOK	75	59

CONTRACT NO. 60863

FED. ROAD DIST. NO. 1 ILLINOIS FED. AID PROJECT