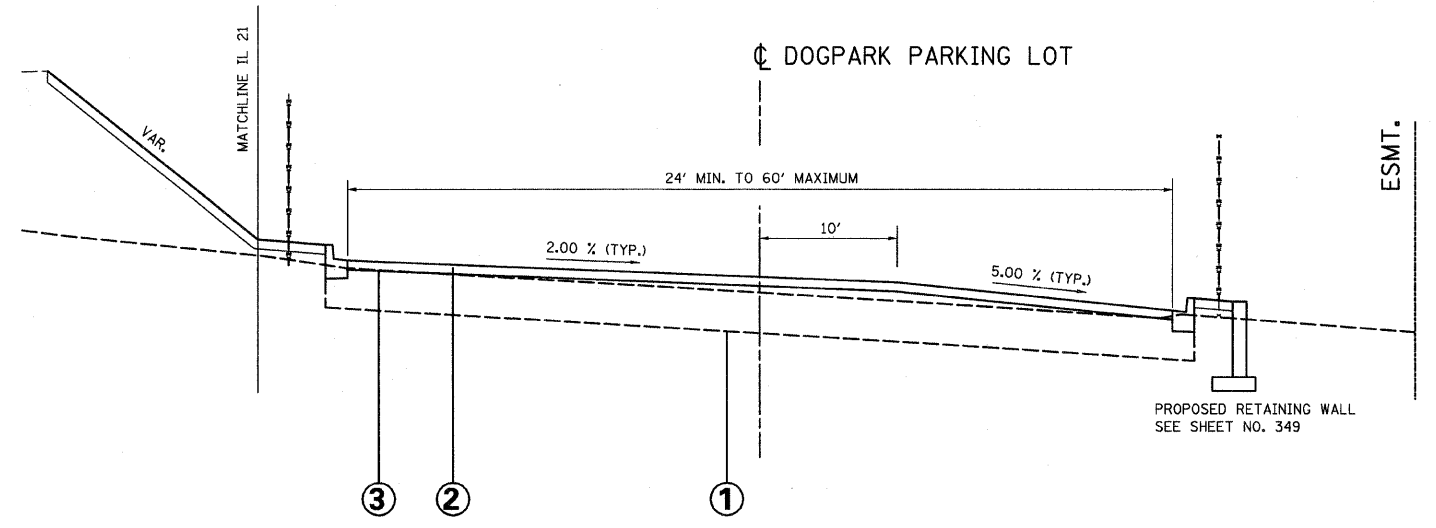


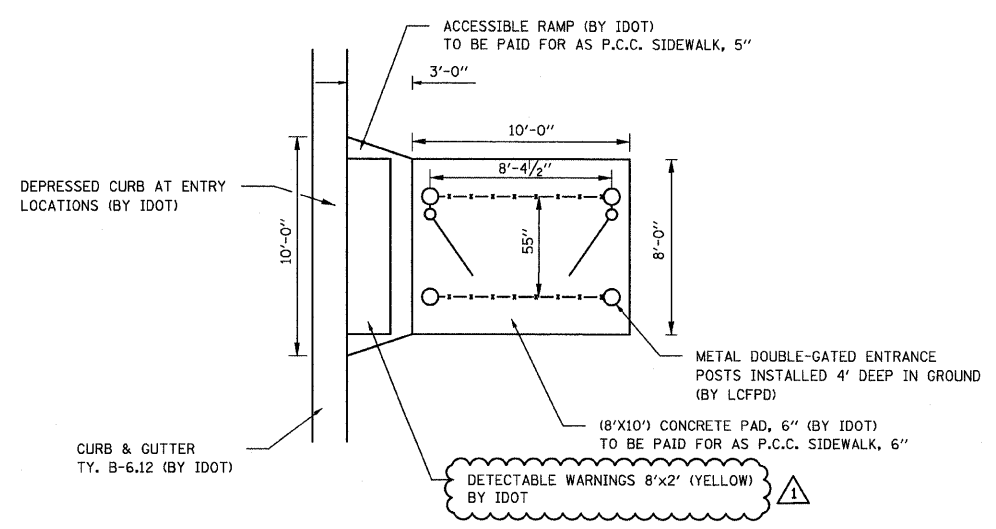
ELEVATION CEDAR 3-RAIL SPLIT-RAIL FENCE WITH WIRE MESH
N.T.S.



TYPICAL SECTION FOR HMA OVERLAY
N.T.S.

- ① AGGREGATE BASE COURSE TYPE B (12" MAX)
- ② PROPOSED HMA SURFACE COURSE, MIX 'C' N50, (IL 9.5 MM, 1/2" MIN.
- ③ PROPOSED HMA BINDER COURSE, IL 19.0, N50, 2 1/2"

NOTE:
EXISTING AGGREGATE SURFACE PARKING LOT (DEPTH AND CROSS-SECTION MAY VARY), EXISTING AGGREGATE TO BASE TO BE GRADED, ROLL TESTED, AND COMPACTED IN PREPARATION FOR HMA PLACEMENT



ACCESSIBLE RAMP AND CONCRETE PAD DETAIL
N.T.S.

FILE NAME = I:\102901\CADD Sheets\DETAILS\dogparkdetails.dgn	USER NAME = IDOT	DESIGNED - PDK	REVISED - 09/02/11 J.V.
		DRAWN - MJG	REVISED -
	PLOT SCALE = 50,0000' / IN.	CHECKED - MRH	REVISED -
	PLOT DATE = 8/31/2011	DATE - 12/17/10	REVISED -

STATE OF ILLINOIS
DEPARTMENT OF TRANSPORTATION

DOG PARK PARKING LOT DETAILS			
SCALE:	SHEET NO.	OF SHEETS	STA. TO STA.

F.A.P. RTE. 330	SECTION 128R-3	COUNTY LAKE	TOTAL SHEETS 518	SHEET NO. 51A
CONTRACT NO. 60953				
ILLINOIS FED. AID PROJECT				