

NOTES

1A. COMBINATION POLE, (2) 15' LIGHTING MAST ARMS AND GROUND INSTALLED PER TRAFFIC SIGNAL PLANS. INSTALL LUMINAIRES.

1B. COMBINATION POLE, (1) 15' LIGHTING MAST ARM AND GROUND INSTALLED PER TRAFFIC SIGNAL PLANS. INSTALL LUMINAIRE.

2. PROPOSED LIGHTING CONTROLLER TO BE INSTALLED FOR TEMPORARY ROADWAY LIGHTING. REFER TO SHEET LT-04.

3. ALL POLES SHALL BE SET BACK 5'-0" FROM BACK EDGE OF CURB TO FACE OF POLE UNLESS NOTED OTHERWISE.

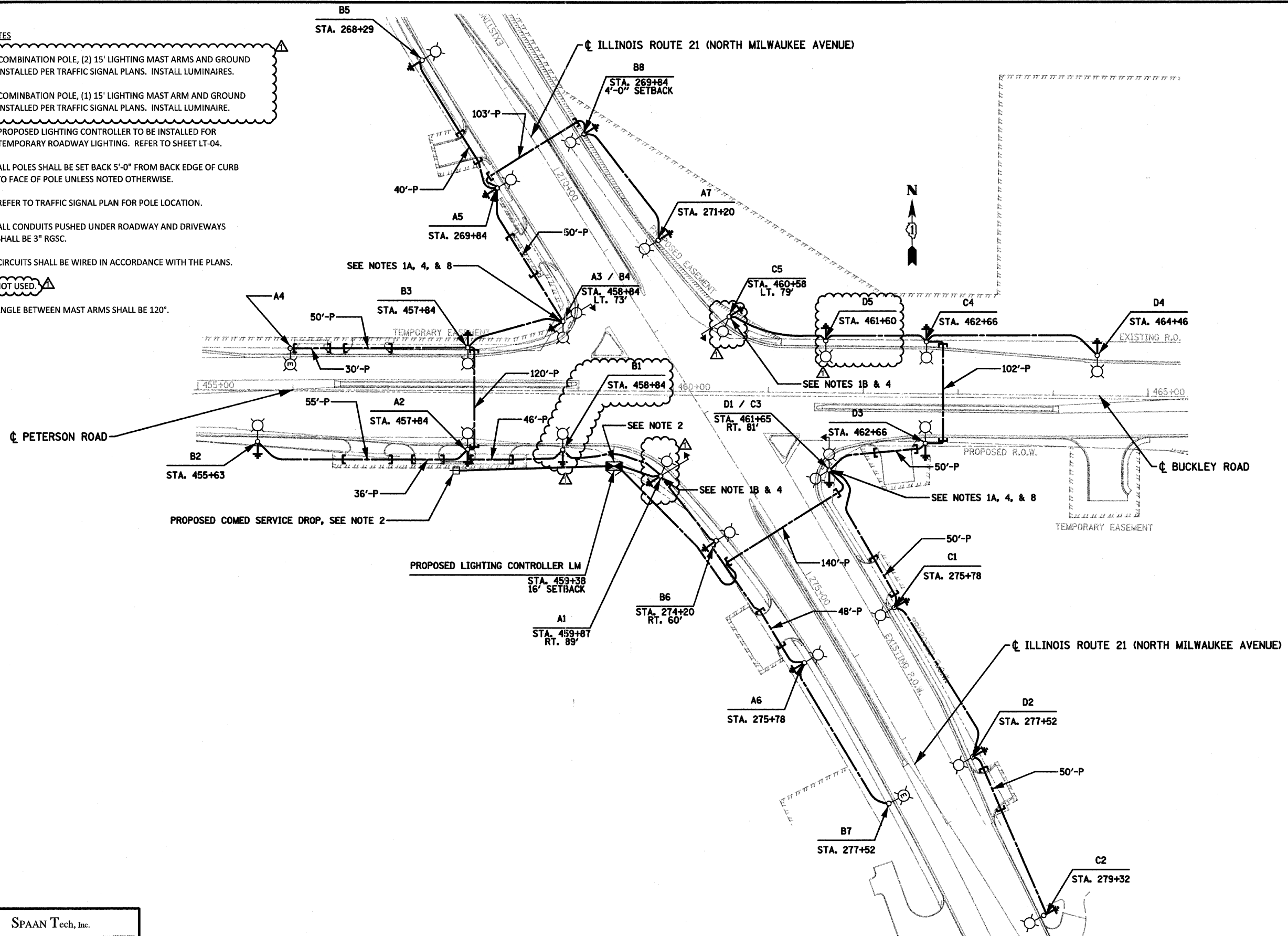
4. REFER TO TRAFFIC SIGNAL PLAN FOR POLE LOCATION.

5. ALL CONDUITS PUSHED UNDER ROADWAY AND DRIVEWAYS SHALL BE 3" RGSC.

6. CIRCUITS SHALL BE WIRED IN ACCORDANCE WITH THE PLANS.

7. NOT USED.

8. ANGLE BETWEEN MAST ARMS SHALL BE 120°.



SPAAN Tech, Inc.
 311 South Wacker Drive, Suite 2400
 Chicago, IL 60606
 phone: 312.277.8800
 fax: 312.277.8808
 web: www.spaanTech.com

LT-B2.dgn	USER NAME = Manish Jha	DESIGNED - IB	REVISED - 09/02/11 IB
STI - PDF.plt		DRAWN - MJ	REVISED -
9/1/2011 10:48:03 AM	PLOT SCALE = 1/8" = 1'-0"	CHECKED - YK	REVISED -
SpaanTech - By LineWeight - graycolor.tbl	DATE - 04/13/11	REVISIONS	REVISED -

**STATE OF ILLINOIS
 DEPARTMENT OF TRANSPORTATION**

**ILLINOIS ROUTE 21 AND ILLINOIS ROUTE 137
 PROPOSED INTERSECTION LIGHTING PLAN**
 SCALE: 1" = 50'
 SHEET NO. OF SHEETS STA. TO STA.

F.A.P. RTE. 330	SECTION 128R-3	COUNTY LAKE	TOTAL SHEETS 617	SHEET NO. 230
CONTRACT NO. 60953				
ILLINOIS FED. AID PROJECT				