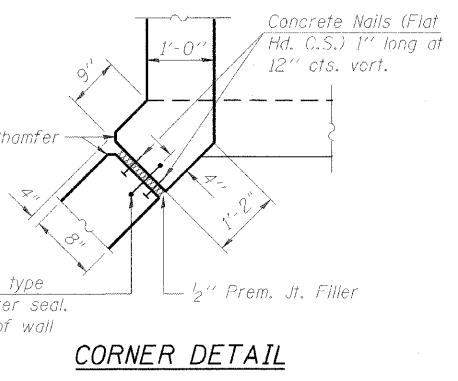
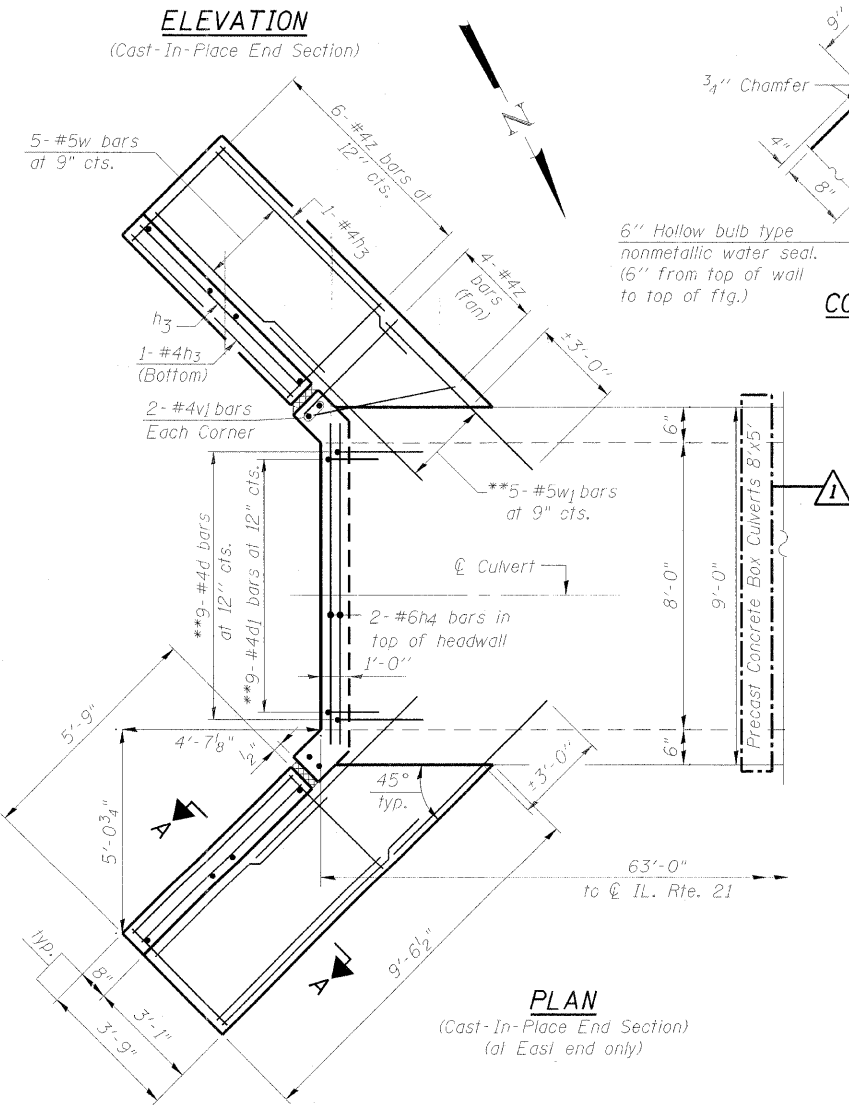
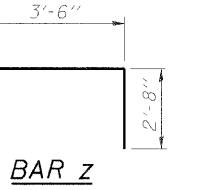
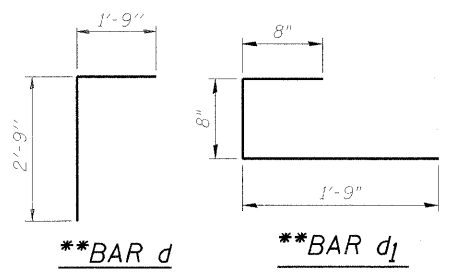


\*\*Cast Reinf. Bars into Precast Concrete Box Culvert as shown. Cost included with Precast Concrete Box Culverts 8'x5'



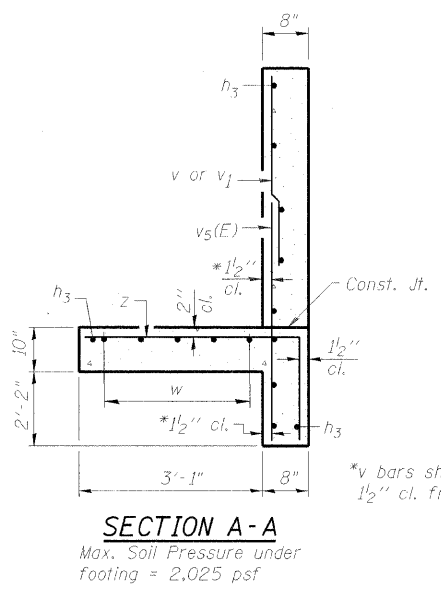
**BILL OF MATERIAL (FOR REINF. BARS CAST INTO PRECAST CONCRETE BOX CULVERT)**

Bar	No.	Size	Length	Shape
**d	9	#4	4'-6"	┌
**d1	9	#4	3'-1"	└
**w1	10	#5	8'-0"	—



**BILL OF MATERIAL**

Bar	No.	Size	Length	Shape
a2	1	#4	8'-8"	—
h3	22	#4	5'-5"	—
h4	2	#6	8'-8"	—
v	12	#4	3'-8"	—
v1	4	#6	8'-8"	—
v5(E)	12	#4	6'-8"	—
w	10	#5	6'-0"	—
z	20	#4	6'-2"	└
Reinforcement Bars	Pound		310	
Reinforcement Bars, Epoxy Coated	Pound		50	
Concrete Box Culverts	Cu. Yd.		5.0	



\*v bars shall not be placed more than 1/2" cl. from back face of wingwall

**SECTION A-A**  
Max. Soil Pressure under footing = 2,025 psf

**CAST-IN-PLACE END SECTION DETAILS  
STRUCTURE NO. 049-0239  
OUTLET NO. 14**

