

STATE OF ILLINOIS  
DEPARTMENT OF TRANSPORTATION  
DIVISION OF HIGHWAYS

**PROPOSED  
HIGHWAY PLANS**

F.A.U. ROUTE 3887 (IL ROUTE 31)  
SECTION R-VB-R

PROJECT: ACBHM-3387(006)  
OVER ~~SOO LINE~~ RAILROAD (0.8 MI SOUTH OF I-90)  
METRA  
BRIDGE REHABILITATION  
KANE COUNTY  
C-91-109-07

F.A. RTE.	SECTION	COUNTY	TOTAL SHEETS	SHEET NO.
3887	R-VB-R	KANE COUNTY	03	1
ILLINOIS			CONTRACT NO. 60C06	

D-91-109-07

FOR INDEX OF SHEETS, SEE SHEET NO. 2

**DESIGN DESIGNATION**

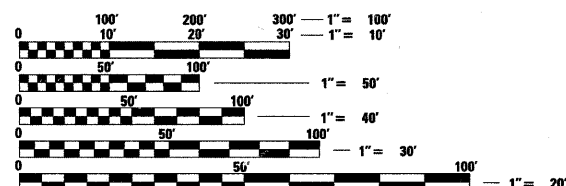
3850 (21) MINOR ARTERIAL 7.21(FD-20)

**TRAFFIC DATA**

ADT (2021): 38,475  
DESIGN SPEED: 40 MPH  
POSTED SPEED: 35 MPH

PROJECT LOCATED IN CITY OF ELGIN

NOTE: WHEREVER IN THESE PLANS REFERENCE IS MADE TO SOO RAILROAD IT SHALL MEAN METRA (METROPOLITAN RAILROAD).

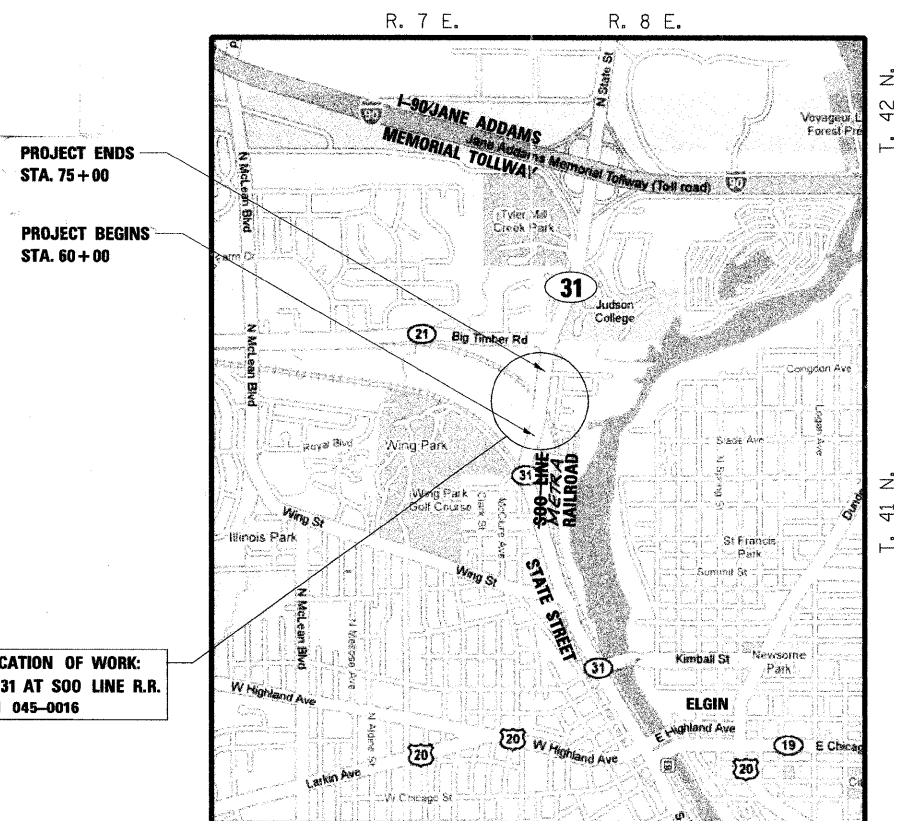


FULL SIZE PLANS HAVE BEEN PREPARED USING STANDARD ENGINEERING SCALES. REDUCED SIZED PLANS WILL NOT CONFORM TO STANDARD SCALES. IN MAKING MEASUREMENTS ON REDUCED PLANS, THE ABOVE SCALES MAY BE USED.

J.U.L.I.E.  
JOINT UTILITY LOCATION INFORMATION FOR EXCAVATION  
1-800-892-0123  
OR 811

PROJECT ENGINEER: SUNG BYUN (847) 705-4288  
PROJECT MANAGER: KIM HARVEY (847) 705-4055

CONTRACT NO. 60C06

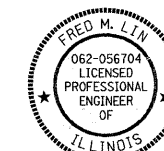


**LOCATION MAP**

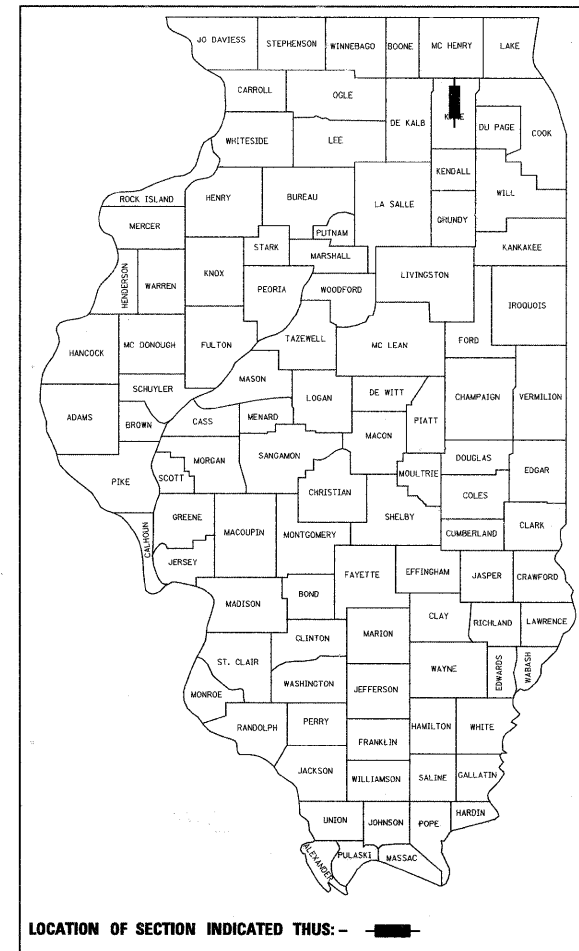
GROSS LENGTH = 383 FT. = 0.17 MILE  
NET LENGTH = 637 FT. = 0.12 MILE



SIGNED: *J. M. Dain*  
DATE: 6/23/2011  
EXPIRES: NOVEMBER 30, 2011  
DRAWING NOS: 1-8, 10-12, 14-17, 69-83



SIGNED: *Fred M. Lin*  
DATE: 6/23/2011  
EXPIRES: NOVEMBER 30, 2011  
DRAWING NOS: 9, 13-15 & 18-34



LOCATION OF SECTION INDICATED THUS: -

BOWMAN, BARRETT & ASSOCIATES INC.  
CONSULTING ENGINEERS  
Chicago, Illinois  
312.228.0100  
www.bbandainc.com

STATE OF ILLINOIS  
DEPARTMENT OF TRANSPORTATION  
DIVISION OF HIGHWAYS  
SUBMITTED June 20, 2011  
*Diane M. O'Keefe*  
DEPUTY DIRECTOR OF HIGHWAYS, REGION ENGINEER  
August 19, 2011  
*Scott E. Stitt, P.E.*  
ENGINEER OF DESIGN AND ENVIRONMENT  
August 19, 2011  
*Christine M. Reed*  
DIRECTOR OF HIGHWAYS, CHIEF ENGINEER

PRINTED BY THE AUTHORITY  
OF THE STATE OF ILLINOIS