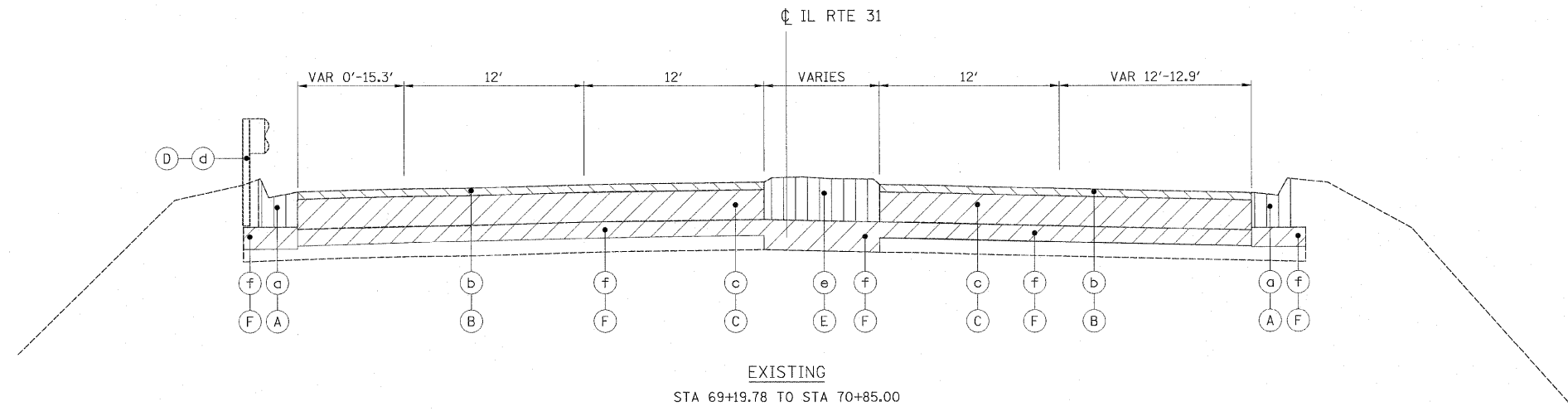


WESTBOUND

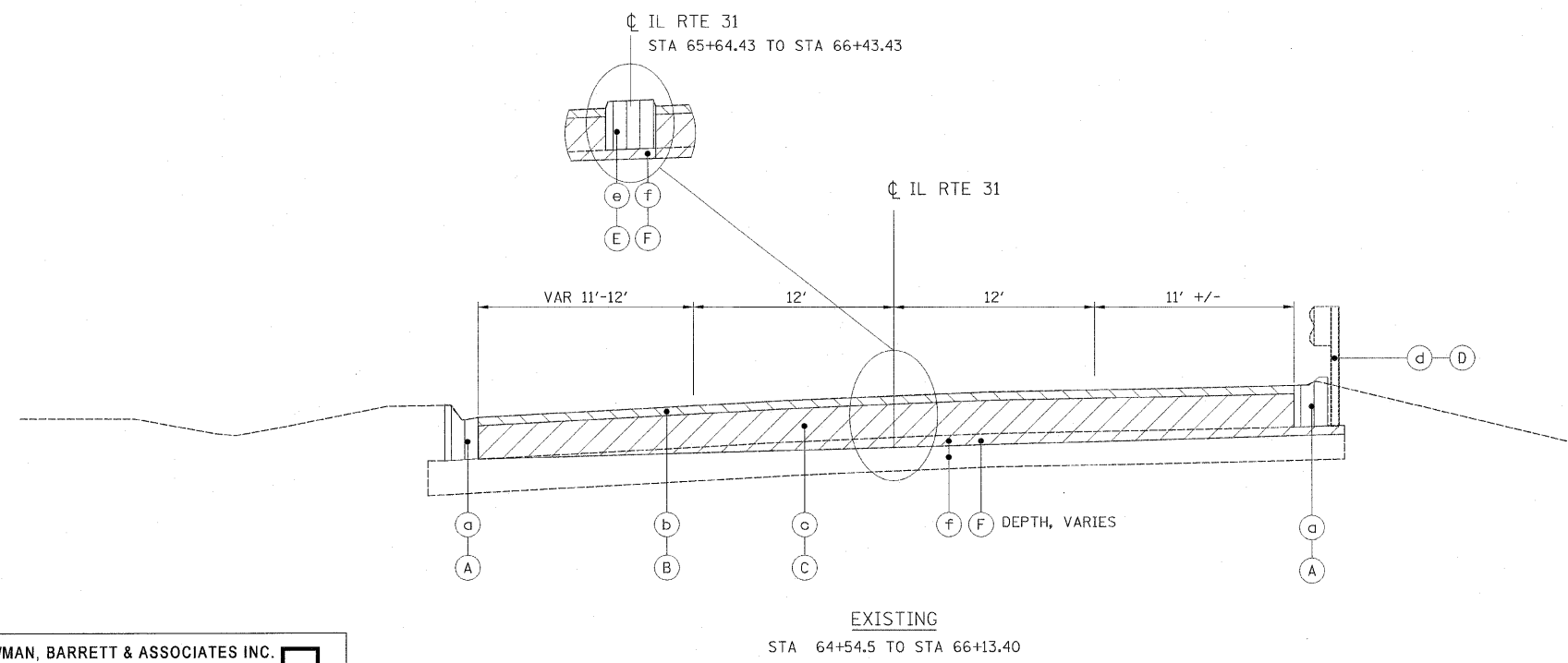
EASTBOUND



- EXISTING LEGEND**
- (a) COMBINATION CURB AND GUTTER
 - (b) BITUMINOUS SURFACE AND BINDER COURSE, 3" - 4.5"
 - (c) PCC PAVEMENT, 9.25" - 11.25"
 - (d) GUARDRAIL
 - (e) MEDIAN
 - (f) AGGREGATE SUBGRADE, 8" - 12"

- REMOVAL LEGEND**
- (A) COMBINATION CURB AND GUTTER REMOVAL
 - (B) HOT-MIX ASPHALT SURFACE REMOVAL, 3"
 - (C) PAVEMENT REMOVAL
 - (D) GUARDRAIL REMOVAL
 - (E) MEDIAN REMOVAL
 - (F) EARTH EXCAVATION

FOR BRIDGE SECTION, SEE STRUCTURAL DRAWINGS



HOT-MIX ASPHALT MIXTURE REQUIREMENTS	
MIXTURE TYPE	AIR VOIDS
PAVEMENT RESURFACING POLYMERIZED HOT-MIX ASPHALT SURFACE COURSE, MIX "F", N90, 2" (IL-9.5mm) LEVELING BINDER (MACHINE METHOD), N70, THICKNESS VARIES 3/4" MIN. -2 1/4"	4% @ 90 Gyr 4% @ 70 Gyr
HOT-MIX ASPHALT PAVEMENT (FULL-DEPTH), 13 3/4" POLYMERIZED HOT-MIX ASPHALT SURFACE COURSE, MIX "F", N90, 2" (IL-9.5mm) POLYMERIZED HOT-MIX ASPHALT BINDER COURSE, IL-19.0, N90, 11 3/4" (IN 4 LIFTS)	4% @ 90 Gyr 4% @ 90 Gyr
RESURFACING AND BUTT JOINT POLYMERIZED HOT-MIX ASPHALT SURFACE COURSE, MIX "F", N90, 2" (IL-9.5mm)	4% @ 90 Gyr
TEMPORARY PAVEMENT HOT-MIX ASPHALT BINDER COURSE, (IL-19mm), N50, 8 1/2", (3 Lifts)	4% @ 50 Gyr
HOT-MIX ASPHALT SURFACE COURSE, MIX "D", (IL-9.5mm), N50, 1 1/2"	4% @ 50 Gyr
INCIDENTAL HMA SURFACING HOT-MIX ASPHALT BINDER COURSE, (IL-19mm), N70, 10", (3 Lifts)	4% @ 70 Gyr

THE "AC TYPE" FOR POLYMERIZED HMA MIXES SHALL BE "SBS/SBR PG 70-22" AND FOR NON-POLYMERIZED HMA, THE "AC TYPE" SHALL BE "PG 64-22" UNLESS MODIFIED BY DISTRICT ONE SPECIAL PROVISIONS. FOR "PERCENT OF RAP", SEE DISTRICT ONE SPECIAL PROVISIONS.

THE UNIT WEIGHT USED TO CALCULATE ALL HOT-MIX ASPHALT SURFACE MIXTURES IS 112 LBS/ SY/IN.
TEMPORARY PAVEMENT NOTE: IF CONTRACTOR CHOOSES TO USE CONCRETE THE THICKNESS WILL BE 10"

BOWMAN, BARRETT & ASSOCIATES INC.
CONSULTING ENGINEERS
Chicago, Illinois
312.228.0100
www.bbainc.com

FILE NAME = D160C06-shr-typical.dgn	USER NAME = default	DESIGNED -	REVISED -
PLOT SCALE = #SCALE#	CHECKED - RA	REVISIONS -	REVISIONS -
PLOT DATE = 6/30/2011	DATE - 07/01/2011	REVISIONS -	REVISIONS -

STATE OF ILLINOIS
DEPARTMENT OF TRANSPORTATION

SCALE: NTS	SHEET NO. 1 OF 2 SHEETS	STA. NA TO STA. NA
------------	-------------------------	--------------------

F.A. RTE.	SECTION	COUNTY	TOTAL SHEETS	SHEET NO.
3887	R-VB-R	KANE	83	6
CONTRACT NO. 60C06			ILLINOIS FED. AID PROJECT	

D:\160C06-shr-typical.dgn