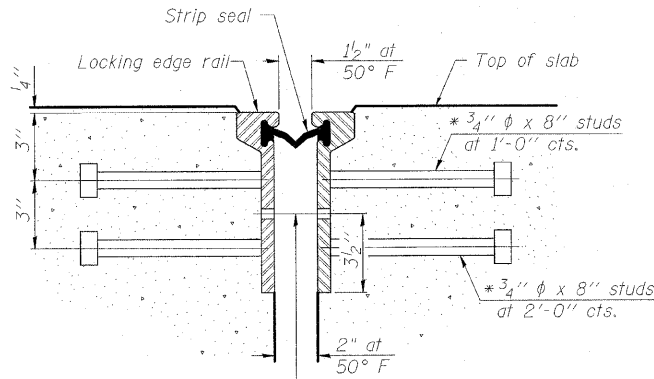


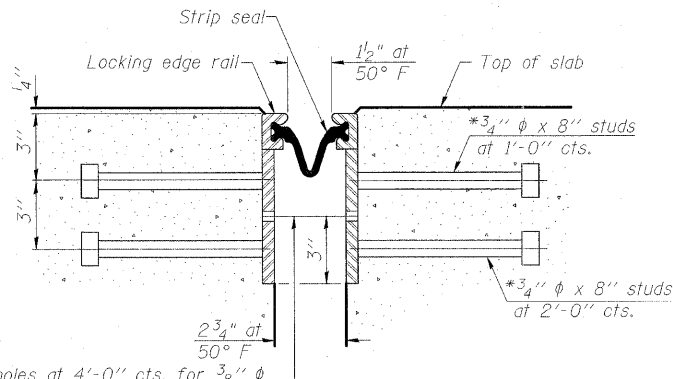
\* Granular or solid flux filled headed studs conforming to Article 1006.32 of the Std. Specs., automatically end welded.

STATE OF ILLINOIS  
DEPARTMENT OF TRANSPORTATION



7/16" φ holes at 4'-0" cts. for 3/8" φ bolts. All bolts shall be burned, sawed, or chipped off flush with the plates after forms are removed, typ.

SECTION THRU  
ROLLED RAIL JOINT



7/16" φ holes at 4'-0" cts. for 3/8" φ bolts. All bolts shall be burned, sawed, or chipped off flush with the plates after forms are removed, typ.

SECTION THRU  
WELDED RAIL JOINT

Notes:

The strip seal shall be made continuous and shall have a minimum thickness of 1/4". The configuration of the strip seal shall match the configuration of the Locking Edge Rails. Open or "webbed" strip seal gland configurations are not permitted. The gland shall be sized for a maximum rated movement of 4 inches.

The Locking Edge Rails depicted are conceptual only, except for the minimum dimensions shown. The actual configuration of the Locking Edge Rails and matching strip seal may vary from manufacturer to manufacturer. Flanged edge rails will not be allowed. Locking Edge Rails may be spliced at slope discontinuities.

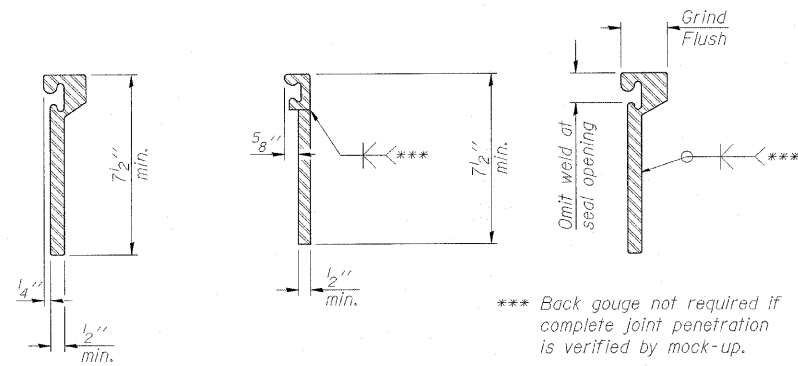
The manufacturer's recommended installation methods shall be followed. The joint opening and deck dimensions detailed on the superstructure are based on a rolled rail expansion joint. If the Contractor elects to use the welded rail expansion joint, the opening and deck dimensions shall be modified according to the dimensions detailed on this sheet. Required modifications shall be made at no additional cost to the State.

All steel components shall be galvanized after fabrication according to Article 520.03 of the Standard Specifications.

Maximum space between rail segments at stage lines shall be 3/16", sealed with a suitable sealant.

Cost of all sliding plates, shear stud connectors, and all connections shall be included with "Preformed Joint Strip Seal".

Exposed surfaces of top sliding plates shall be textured to meet all ADA requirements.



ROLLED  
EXTRUDED RAIL

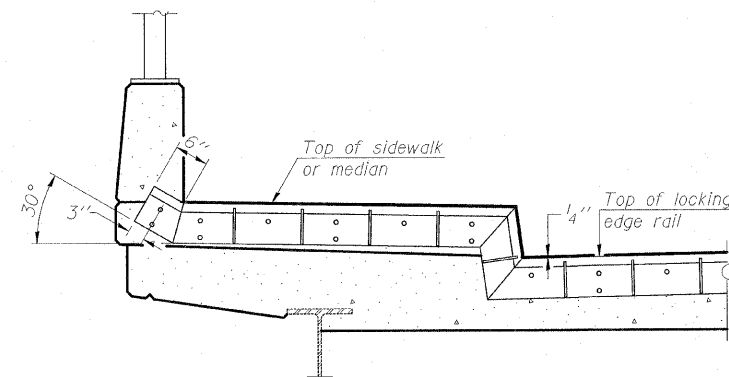
WELDED RAIL

LOCKING EDGE  
RAIL SPLICE

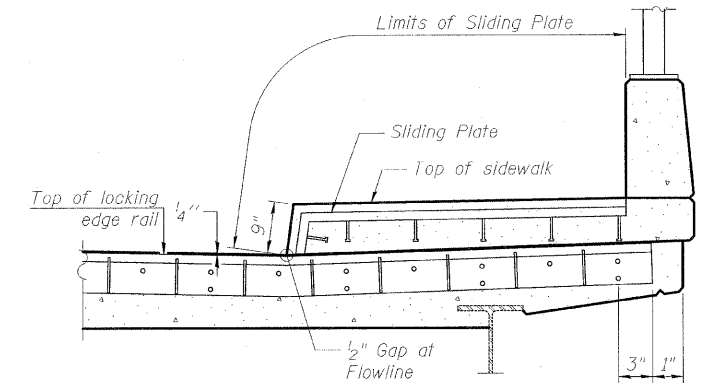
The inside of the locking edge rail groove shall be free of weld residue.

Rolled rail shown, welded rail similar.

LOCKING EDGE RAILS

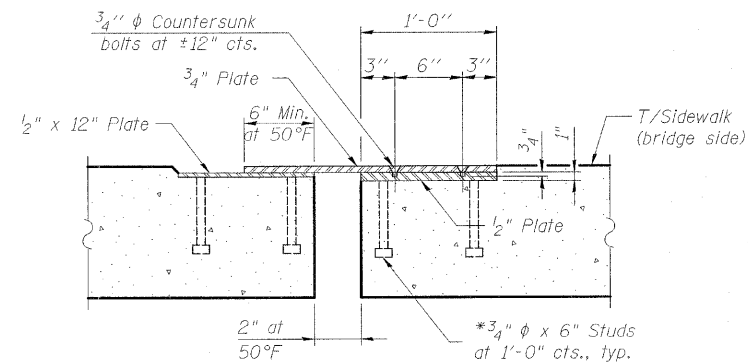


AT WEST SIDEWALK  
(Looking North)



AT EAST SIDEWALK  
(Looking North)

TYPICAL END TREATMENTS



SECTION THRU SLIDING PLATE  
(Dimensions at right L to C Abut)

BILL OF MATERIAL

Item	Unit	Total
Preformed Joint Strip Seal	Foot	196

DESIGNED	- TAH
CHECKED	- DF
DRAWN	- LAM
CHECKED	- DF

BOWMAN, BARRETT & ASSOCIATES INC.  
CONSULTING ENGINEERS  
Chicago, Illinois  
312.228.0100  
www.bbda-inc.com  
Job No. 910



SHEET NO. S-15	F.A.U. RTE. 3887	SECTION R-VB-R	COUNTY KANE	TOTAL SHEETS 83	SHEET NO. 49
S-34 SHEETS	CONTRACT NO. 60C06			FED. ROAD DIST. NO. 1 ILLINOIS FED. AID PROJECT	

PREFORMED JOINT STRIP SEAL  
STRUCTURE NO. 045-0016