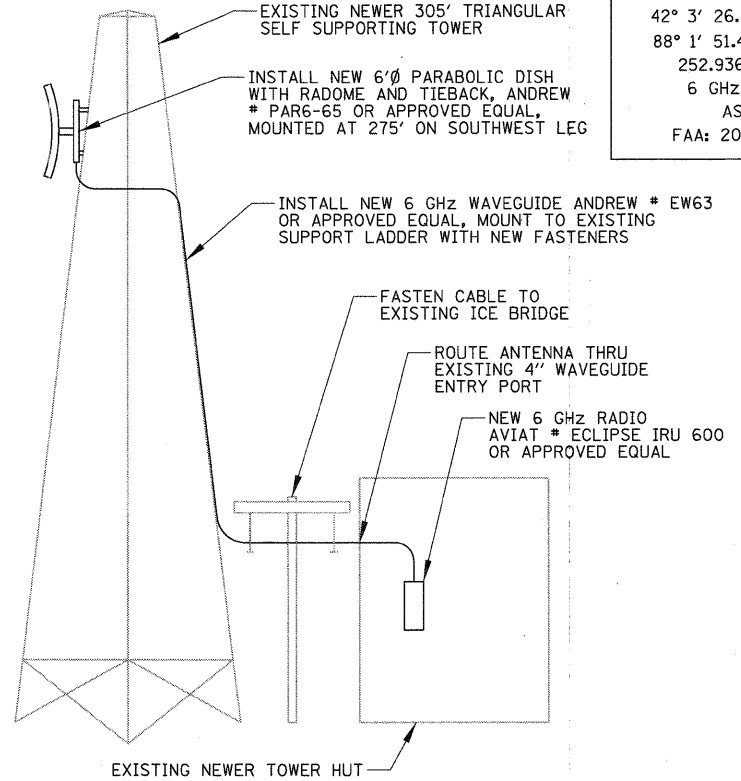


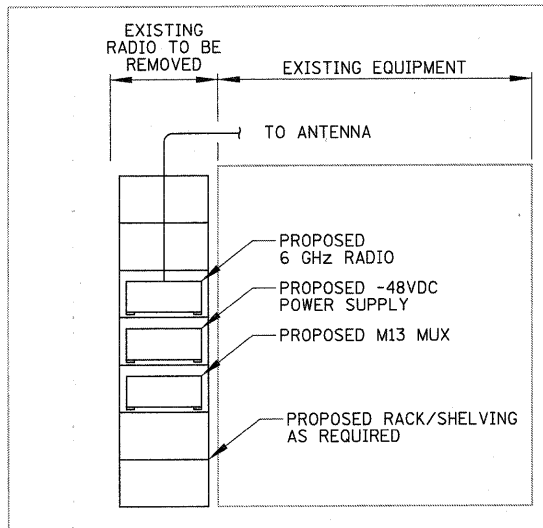
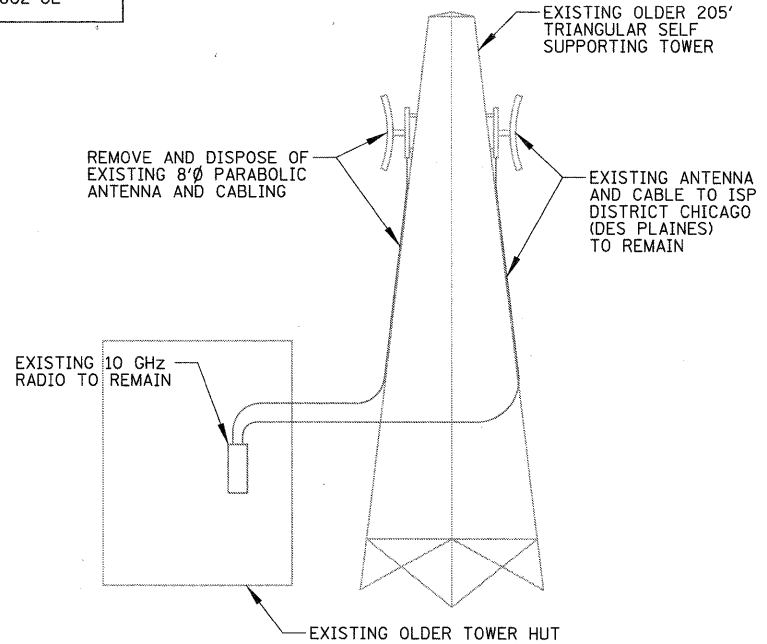
42° 0' 50.97" N LATITUDE  
 88° 17' 9.40" W LONGITUDE  
 72.936° AZIMUTH  
 6 GHZ FCC CLASS A  
 ASR: 1008061  
 FAA: 95-AGL-3718-OE

**RADIO & ANTENNA DETAIL – ISP DISTRICT 2 (ELGIN)**  
 N.T.S.

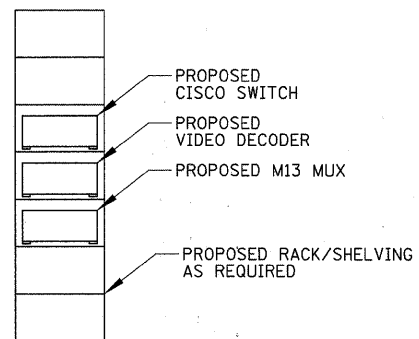


42° 3' 26.83" N LATITUDE  
 88° 1' 51.43" W LONGITUDE  
 252.936° AZIMUTH  
 6 GHZ FCC CLASS A  
 ASR: 1210551  
 FAA: 2010-AGL-6802-OE

**RADIO & ANTENNA DETAIL – ISTHA M5 FACILITY**  
 N.T.S.

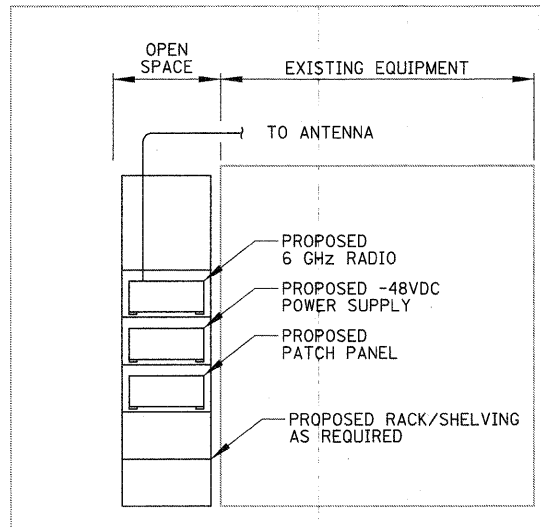


**TOWER HUT – CENTER AISLE SOUTH ELEVATION**



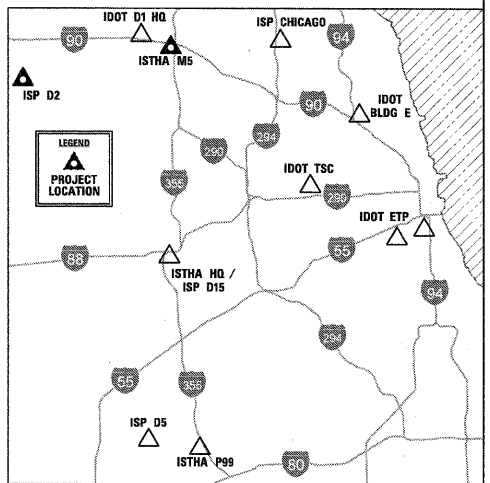
**TELEPHONE ROOM – WEST WALL ELEVATION**

**EQUIPMENT LAYOUT DETAIL – ISP DISTRICT 2 (ELGIN)**  
 N.T.S.



**NEWER TOWER HUT – CENTER AISLE SOUTH ELEVATION**

**EQUIPMENT LAYOUT DETAIL – ISTHA M5 FACILITY**  
 N.T.S.



**CHRISTOPHER B. BURKE ENGINEERING, LTD.**  
 9575 W. Higgins Road, Suite 600  
 Rosemont, Illinois 60018  
 (847) 823-0500

FILE NAME =	USER NAME = ADERICCO	DESIGNED <i>AJD</i>	REVISED -
N:\dot\090122\Mech\090122_AntennaDetail_01.sht		DRAWN <i>KWB</i>	REVISED -
	PLOT SCALE = 20'	CHECKED <i>JPC</i>	REVISED -
	PLOT DATE = 5/12/2011	DATE <i>5/12/2011</i>	REVISED -

**STATE OF ILLINOIS  
 DEPARTMENT OF TRANSPORTATION**

<b>ITS CENTER-TO-CENTER INTEGRATION PROJECT</b>			
<b>RADIO, ANTENNA, &amp; EQUIPMENT DETAILS – ISP DIST. 2 / ISTHA M5</b>			
SCALE: N.T.S.	SHEET NO. OF SHEETS	STA. TO STA.	

F.A. RTE.	SECTION	COUNTY	TOTAL SHEETS	SHEET NO.
	2009-0871	VARIES	17	12
CONTRACT NO. 60I34				
ILLINOIS FED. AID PROJECT				