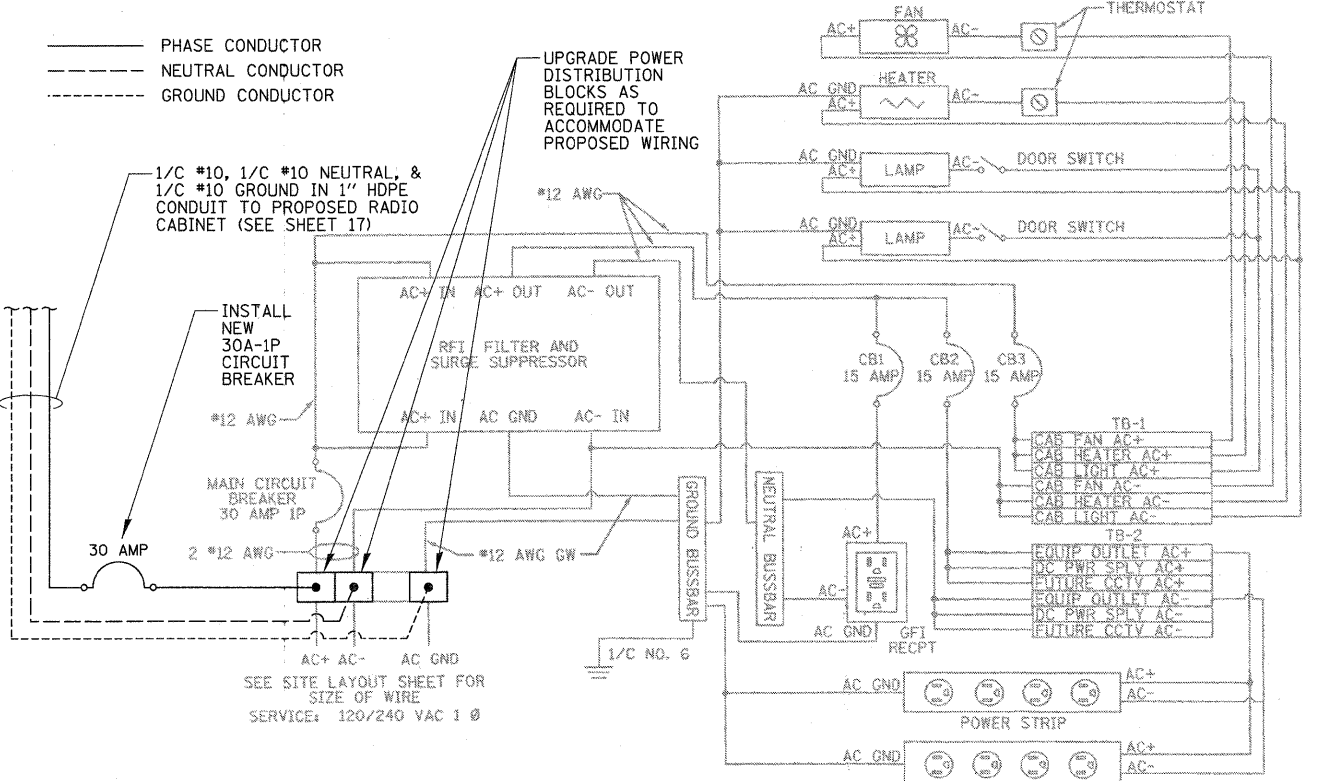
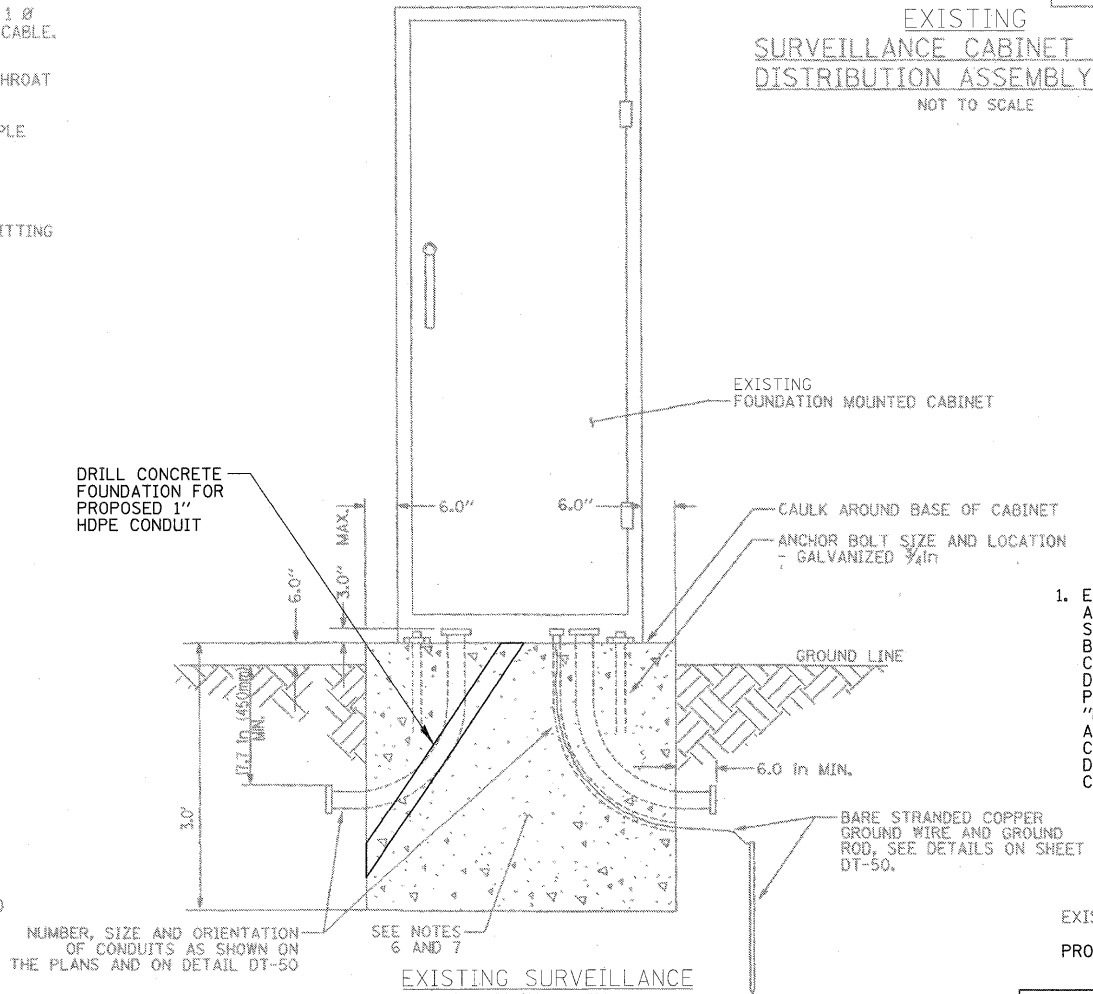


EXISTING 120V ELECTRIC SERVICE TO SURVEILLANCE CABINET



EXISTING SURVEILLANCE CABINET POWER DISTRIBUTION ASSEMBLY (PDA) NOT TO SCALE



EXISTING SURVEILLANCE CABINET DETAIL CONCRETE BASE MOUNTED (MODEL 334)

SCOPE OF WORK

1. EXISTING SURVEILLANCE CABINET AND ASSOCIATED SERVICE WIRING/DISCONNECT SHALL BE MODIFIED TO PROVIDE A NEW BRANCH CIRCUIT TO PROPOSED COMMUNICATIONS CABINET. ALL WORK ON THIS DRAWING AND IN THE RELATED SPECIAL PROVISION SHALL BE PAID FOR UNDER "MODIFY EXISTING CABINET EQUIPMENT AND APPURTENANCES", INCLUDING ALL CONDUIT/WIRING FROM THE SERVICE DISCONNECT TO THE COMMUNICATIONS CABINET.

EXISTING CONDITIONS SHOWN IN HALF TONE
PROPOSED CONDITIONS SHOWN IN BOLD

FILE NAME =	USER NAME = ADERICCO	DESIGNED AJD	REVISED -
N:\dot\090122\Mech\090122_Sur-CabinetDetail_01.sht		DRAWN KWB	REVISED -
		CHECKED JPC	REVISED -
		DATE 5/12/2011	REVISED -

STATE OF ILLINOIS
DEPARTMENT OF TRANSPORTATION

ITS CENTER-TO-CENTER INTEGRATION PROJECT
DETAILS (2 OF 3)

SCALE: N.T.S. SHEET NO. OF SHEETS STA. TO STA.

DCB CHRISTOPHER B. BURKE ENGINEERING, LTD.
9575 W. Higgins Road, Suite 600
Rosemont, Illinois 60018
(847) 823-0500

F.A. RTE.	SECTION	COUNTY	TOTAL SHEETS	SHEET NO.
	2009-0871	VARIES	17	16
CONTRACT NO. 60I34				
ILLINOIS FED. AID PROJECT				