

- LEGEND**
- 1 PIPE CULVERT REMOVAL (TYP.)
 - 2 FLARED END SECTION REMOVAL
 - 3 PIPE UNDERDRAIN REMOVAL
 - 4 STORM SEWER REMOVAL, 12"
 - 5 STORM SEWER REMOVAL, 18"
 - 6 STORM SEWER REMOVAL, 24"
 - 7 STORM SEWER REMOVAL, 15"
 - 8 STORM SEWER REMOVAL, 30"
 - 9 REMOVING MANHOLES
 - 10 REMOVING CATCH BASINS
 - 11 CONCRETE HEADWALL FOR PIPE UNDERDRAIN REMOVAL

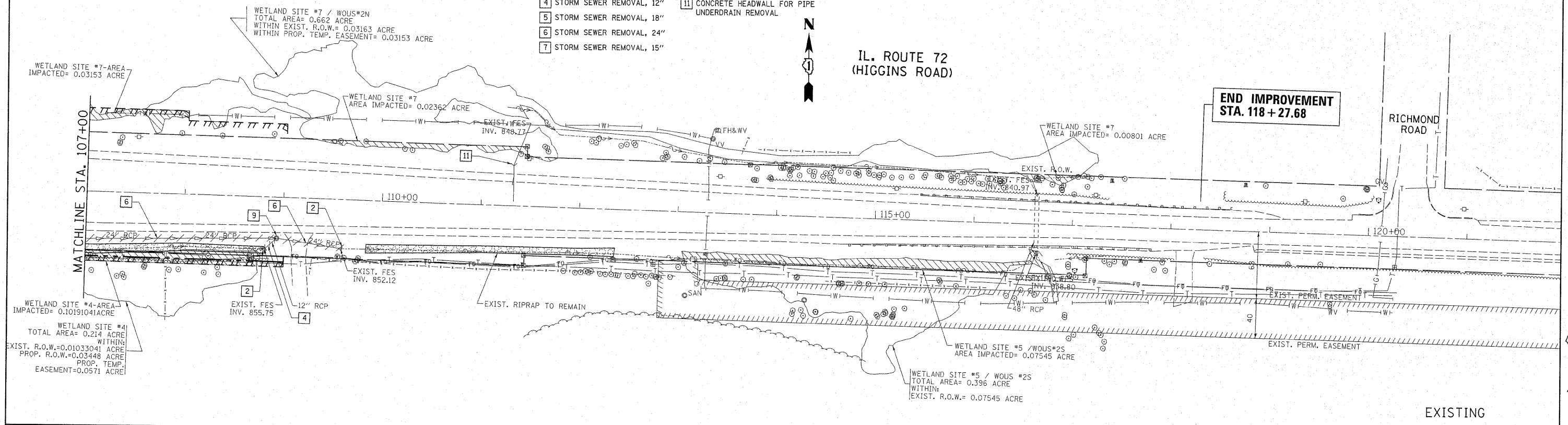


IL. ROUTE 72
(HIGGINS ROAD)

END IMPROVEMENT
STA. 118 + 27.68

RICHMOND ROAD

MATCHLINE STA. 107+00



EXISTING

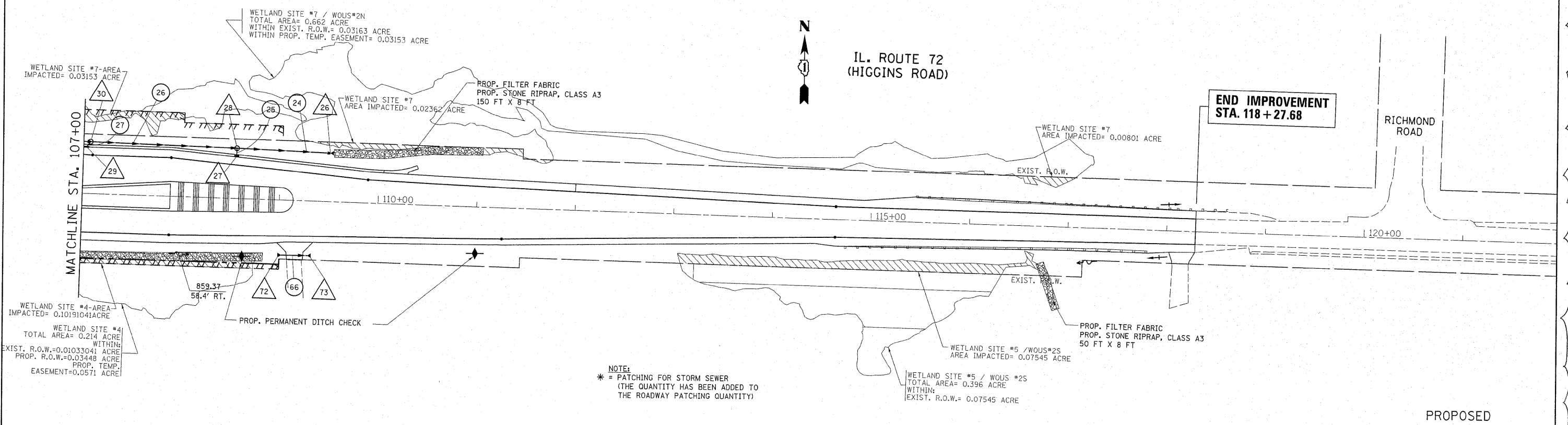


IL. ROUTE 72
(HIGGINS ROAD)

END IMPROVEMENT
STA. 118 + 27.68

RICHMOND ROAD

MATCHLINE STA. 107+00



PROPOSED

NOTE:
* = PATCHING FOR STORM SEWER
(THE QUANTITY HAS BEEN ADDED TO
THE ROADWAY PATCHING QUANTITY)

FILE NAME = P110008-shd-drain.dgn	USER NAME = shranisb	DESIGNED - DRAWN -	REVISED - REVISED -
PLOT SCALE = 50.0000' / 1"	CHECKED -	DATE -	REVISED -
PLOT DATE = 9/6/2011			REVISED -

STATE OF ILLINOIS
DEPARTMENT OF TRANSPORTATION

IL. ROUTE 72 (HIGGINS RD.) AT RANDALL RD.
EXISTING & PROPOSED DRAINAGE SHEET

SCALE: 1" = 50' SHEET NO. OF SHEETS STA. 107+00.00 TO STA. 122+00.00

F.A.P. RTE.	SECTION	COUNTY	TOTAL SHEETS	SHEET NO.
341	62-N-1	KANE	148	32
CONTRACT NO. 60K09				
ILLINOIS FED. AID PROJECT				