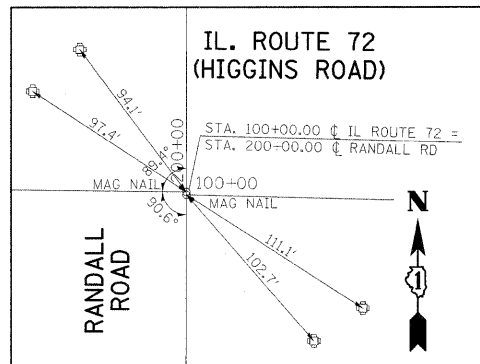


BEGIN PT #114
STA. 74+25.51

PI #5
STA. 95+36.98



CENTERLINE JOG



IL. ROUTE 72
(HIGGINS ROAD)

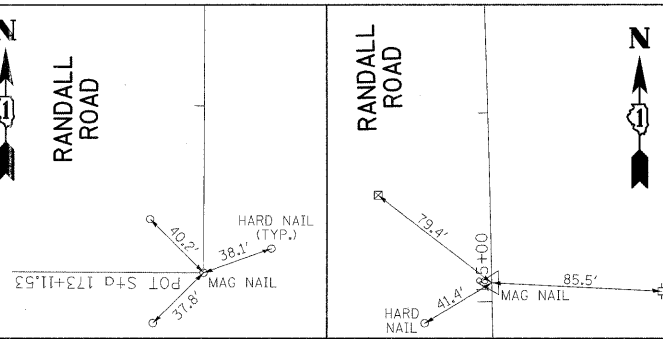
RANDALL ROAD

RANDALL ROAD

MATCHLINE STA. 189+00

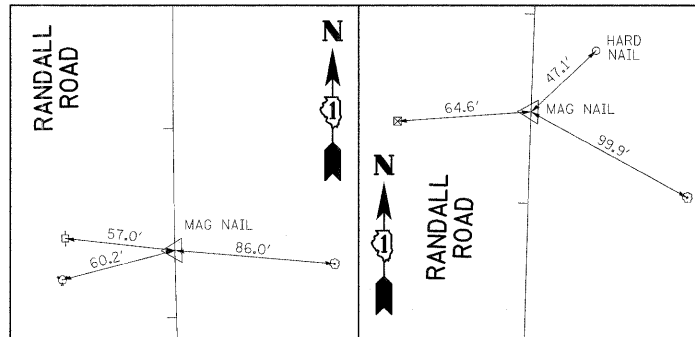
EXIST. CURVE E_RNDL-4
PI STA. = 216+66.09
 $\Delta = 4^\circ 18' 41''$ (LT)
D = 0° 23' 05"
R = 11,819.97'
T = 444.91'
L = 889.40'
E = 8.37'
 $\theta =$ -----
T.R. = -----
S.E. RUN = -----
P.C. STA. = 212+21.18
P.T. STA. = 221+10.58

EXIST. CURVE E_72-1
PI STA. = 95+36.98
 $\Delta = 1^\circ 09' 12''$ (RT)
D = 0° 12' 37"
R = 27,243.63'
T = 274.22'
L = 548.42'
E = 1.38'
 $\theta =$ -----
T.R. = -----
S.E. RUN = -----
P.C. STA. = 92+62.76
P.T. STA. = 98+11.18



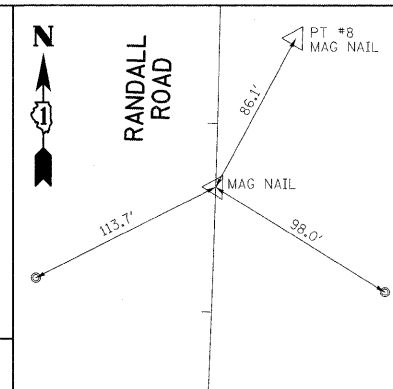
BEGIN PT #100
STA. 173+11.53

PI #1 (125)
STA. 185+09.95



PI #2 (124)
STA. 192+35.36

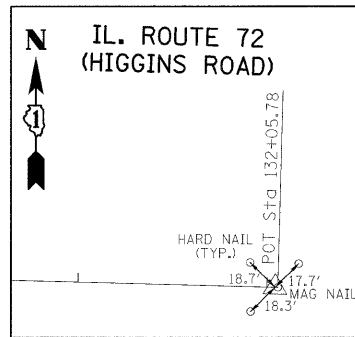
PI #3 (112)
STA. 207+48.56



PI #4 (110)
STA. 74+25.51

EXIST. CURVE E_RNDL-3
PI STA. = 207+48.56
 $\Delta = 3^\circ 48' 46''$ (RT)
D = 0° 30' 37"
R = 11,231.37'
T = 373.84'
L = 747.40'
E = 6.22'
 $\theta =$ -----
T.R. = -----
S.E. RUN = -----
P.C. STA. = 203+74.72
P.T. STA. = 211+22.12

IL. ROUTE 72
(HIGGINS ROAD)



END PT #121
STA. 132+04.30

EXIST. CURVE E_RNDL-1
PI STA. = 185+09.95
 $\Delta = 2^\circ 57' 29''$ (LT)
D = 0° 25' 26"
R = 13,521.01'
T = 349.12'
L = 698.08'
E = 4.51'
 $\theta =$ -----
T.R. = -----
S.E. RUN = -----
P.C. STA. = 181+60.83
P.T. STA. = 188+58.92

MATCHLINE STA. 189+00

RANDALL ROAD

BENCHMARK #1

"X" CUT IN SW BOLT
F.H. STA. 75+15, 62' (LT)
ELEV. = 923.19

BENCHMARK #2

P.P. @ NE CORNER
RICHMOND RD &
IL. ROUTE 72 (HIGGINS RD.)
ELEV. = 843.26

BENCHMARK #3

"X" CUT IN SW BOLT
F.H. STA. 178+38, 82' (LT)
ELEV. = 883.37

BENCHMARK #4

TOP CONC. R.O.W. MONUMENT
@ NE CORNER RANDALL RD.
& IL. ROUTE 72 (HIGGINS RD.)
ELEV. = 896.10

BENCHMARK #5

"□" CUT IN CENTER OF 6' HEADWALL
STA. 220+05, 50' (RT)
ELEV. = 892.74

EXIST. CURVE E_RNDL-2
PI STA. = 192+35.37
 $\Delta = 2^\circ 43' 43''$ (RT)
D = 1° 09' 38"
R = 4,937.04'
T = 117.58'
L = 235.12'
E = 1.40'
 $\theta =$ -----
T.R. = -----
S.E. RUN = -----
P.C. STA. = 191+17.79
P.T. STA. = 193+52.90

STATE OF ILLINOIS
DEPARTMENT OF TRANSPORTATION

IL. ROUTE 72 (HIGGINS RD.) @ RANDALL RD.
ALIGNMENT, TIES, & BENCHMARK SHEET

F.A.P. RTE.	SECTION	COUNTY	TOTAL SHEETS	SHEET NO.
341	62-N-1	KANE	148	12
CONTRACT NO. 60K09				

FILE NAME = P110008-shr-ATB.dgn

USER NAME = ggjlonobt
PLOT SCALE = 200.0000' / IN.
PLOT DATE = 4/28/2010

DESIGNED	REVISD
-	-
DRAWN	REVISD
-	-
CHECKED	REVISD
-	-
DATE	REVISD
-	-

SCALE: NONE SHEET NO. OF SHEETS STA. TO STA.

ILLINOIS FED. AID PROJECT