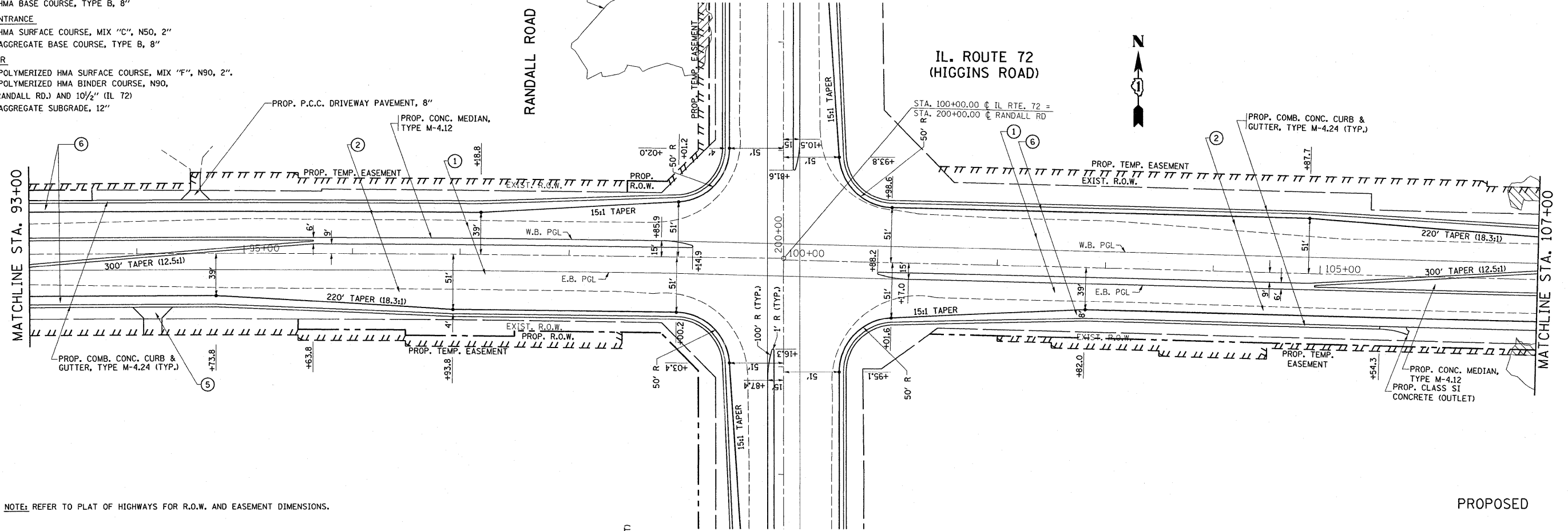


**LEGEND**

- 1 RESURFACING  
-PROP. POLYMERIZED HMA SURFACE COURSE, MIX "F", N90, 2"
- 2 WIDENING  
-PROP. POLYMERIZED HMA SURFACE COURSE, MIX "F", N90, 2"  
-PROP. POLYMERIZED HMA BINDER COURSE, N90, 10 1/2" (IL 72) AND 9 1/2" (RANDALL RD.)  
-PROP. AGGREGATE SUBGRADE, 12"
- 3 P.E. DRIVEWAY  
-PROP. HMA SURFACE COURSE, MIX "C", N50, 2"  
-PROP. HMA BASE COURSE, 6"
- 4 C.E. DRIVEWAY  
-PROP. HMA SURFACE COURSE, MIX "C", N50, 2"  
-PROP. HMA BASE COURSE, TYPE B, 8"
- 5 FIELD ENTRANCE  
-PROP. HMA SURFACE COURSE, MIX "C", N50, 2"  
-PROP. AGGREGATE BASE COURSE, TYPE B, 8"
- 6 SHOULDER  
-PROP. POLYMERIZED HMA SURFACE COURSE, MIX "F", N90, 2"  
-PROP. POLYMERIZED HMA BINDER COURSE, N90, 9 1/2" (RANDALL RD.) AND 10 1/2" (IL 72)  
-PROP. AGGREGATE SUBGRADE, 12"

EXIST. CURVE E-72-1  
 PI STA. = 95+36.98  
 $\Delta = 1^\circ 09' 12''$  (RT)  
 $D = 0^\circ 12' 37''$   
 $R = 27,243.63'$   
 $T = 274.22'$   
 $L = 548.42'$   
 $E = 1.38'$   
 $e = \text{---}$   
 $T.R. = \text{---}$   
 $S.E. RUN = \text{---}$   
 $P.C. STA. = 92+62.76$   
 $P.T. STA. = 98+11.18$



NOTE: REFER TO PLAT OF HIGHWAYS FOR R.O.W. AND EASEMENT DIMENSIONS.

FILE NAME = P110008-shr-plan.dgn	USER NAME = drivakosgn	DESIGNED -	REVISED -	<b>STATE OF ILLINOIS DEPARTMENT OF TRANSPORTATION</b>	<b>IL. ROUTE 72 (HIGGINS ROAD) @ RANDALL ROAD EXISTING &amp; PROPOSED ROADWAY PLAN</b>			F.A.P. RTE. 341	SECTION 62-N-1	COUNTY KANE	TOTAL SHEETS 148	SHEET NO. 21
	PLLOT SCALE = 50,0000' / IN.	DRAWN -	REVISED -		SCALE: 1" = 50'	SHEET NO.	OF	SHEETS	STA. 93+00.00	TO STA. 107+00.00	ILLINOIS FED. AID PROJECT	
	PLLOT DATE = 5/31/2011	CHECKED -	REVISED -									
		DATE -	REVISED -									
CONTRACT NO. 60K09												

: 19:30:48 05/22/2011