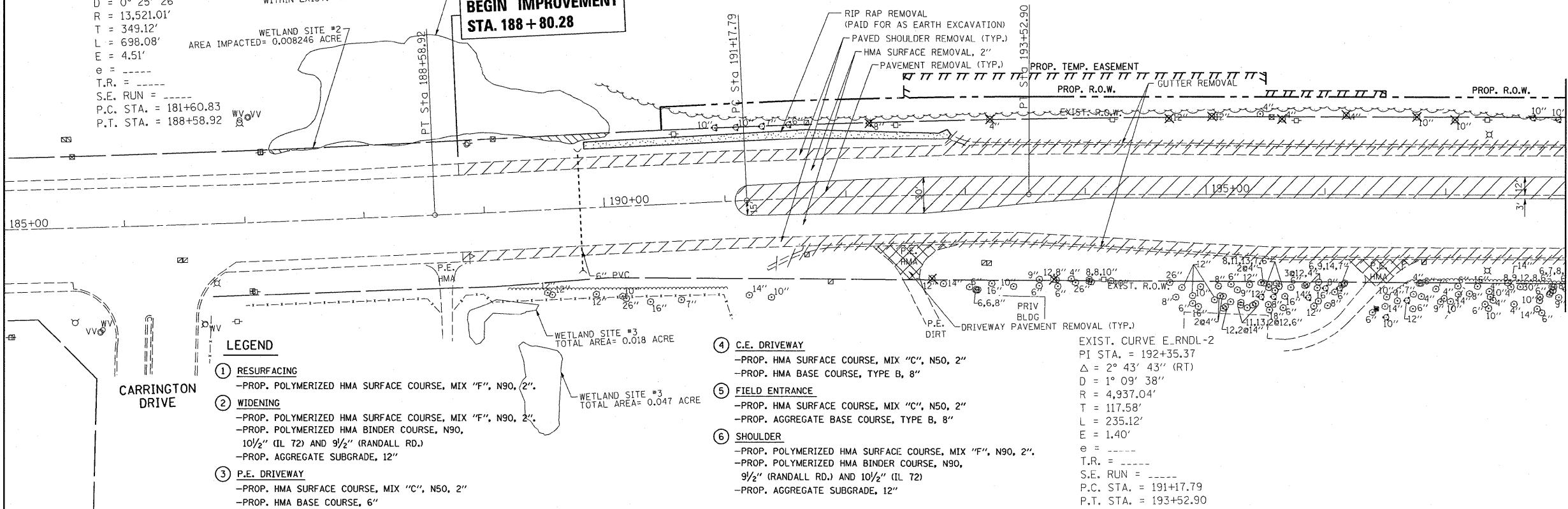


EXIST. CURVE E\_RNDL-1  
 PI STA. = 185+09.95  
 $\Delta = 2^\circ 57' 29''$  (LT)  
 $D = 0^\circ 25' 26''$   
 $R = 13,521.01'$   
 $T = 349.12'$   
 $L = 698.08'$   
 $E = 4.51'$   
 $e =$   
 $T.R. =$   
 $S.E. RUN =$   
 $P.C. STA. = 181+60.83$   
 $P.T. STA. = 188+58.92$

WETLAND SITE #2  
 TOTAL AREA = 0.359 ACRE  
 WITHIN EXIST. R.O.W. = 0.008246 ACRE  
 AREA IMPACTED = 0.008246 ACRE

**BEGIN IMPROVEMENT  
 STA. 188 + 80.28**



**LEGEND**

- ① RESURFACING  
 -PROP. POLYMERIZED HMA SURFACE COURSE, MIX "F", N90, 2"
- ② WIDENING  
 -PROP. POLYMERIZED HMA SURFACE COURSE, MIX "F", N90, 2"  
 -PROP. POLYMERIZED HMA BINDER COURSE, N90, 10 1/2" (IL 72) AND 9 1/2" (RANDALL RD.)  
 -PROP. AGGREGATE SUBGRADE, 12"
- ③ P.E. DRIVEWAY  
 -PROP. HMA SURFACE COURSE, MIX "C", N50, 2"  
 -PROP. HMA BASE COURSE, 6"

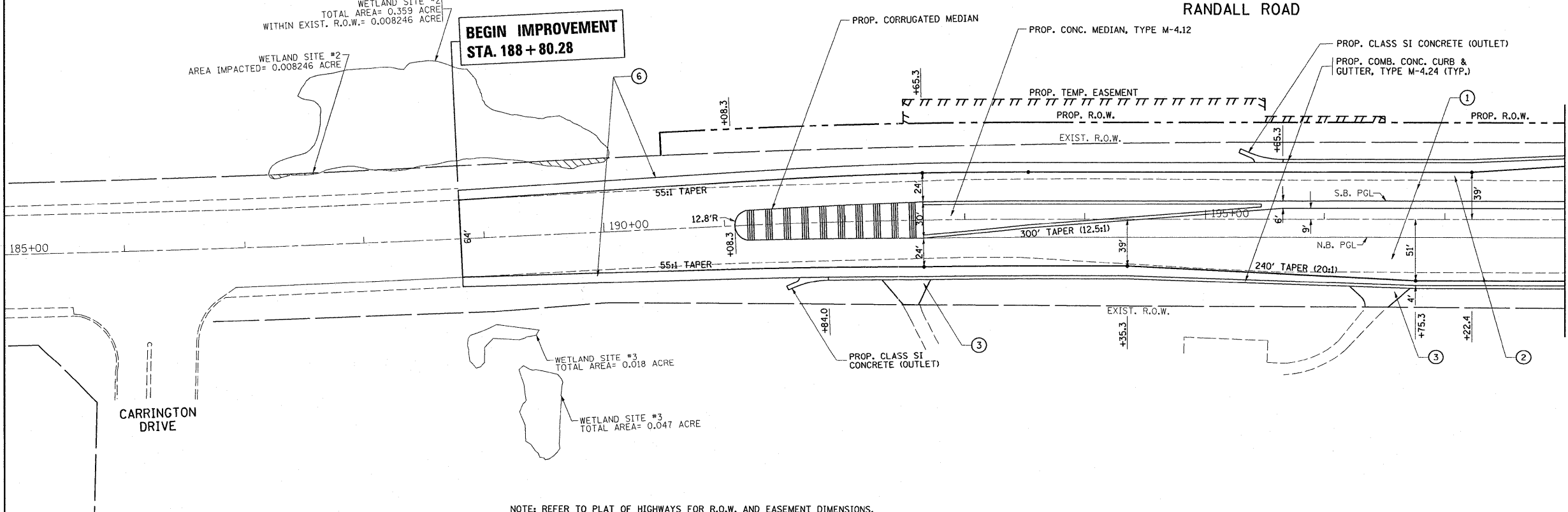
- ④ C.E. DRIVEWAY  
 -PROP. HMA SURFACE COURSE, MIX "C", N50, 2"  
 -PROP. HMA BASE COURSE, TYPE B, 8"
- ⑤ FIELD ENTRANCE  
 -PROP. HMA SURFACE COURSE, MIX "C", N50, 2"  
 -PROP. AGGREGATE BASE COURSE, TYPE B, 8"
- ⑥ SHOULDER  
 -PROP. POLYMERIZED HMA SURFACE COURSE, MIX "F", N90, 2"  
 -PROP. POLYMERIZED HMA BINDER COURSE, N90, 9 1/2" (RANDALL RD.) AND 10 1/2" (IL 72)  
 -PROP. AGGREGATE SUBGRADE, 12"

EXIST. CURVE E\_RNDL-2  
 PI STA. = 192+35.37  
 $\Delta = 2^\circ 43' 43''$  (RT)  
 $D = 1^\circ 09' 38''$   
 $R = 4,937.04'$   
 $T = 117.58'$   
 $L = 235.12'$   
 $E = 1.40'$   
 $e =$   
 $T.R. =$   
 $S.E. RUN =$   
 $P.C. STA. = 191+17.79$   
 $P.T. STA. = 193+52.90$

EXISTING

WETLAND SITE #2  
 TOTAL AREA = 0.359 ACRE  
 WITHIN EXIST. R.O.W. = 0.008246 ACRE  
 AREA IMPACTED = 0.008246 ACRE

**BEGIN IMPROVEMENT  
 STA. 188 + 80.28**



**LEGEND**

- ① RESURFACING  
 -PROP. POLYMERIZED HMA SURFACE COURSE, MIX "F", N90, 2"
- ② WIDENING  
 -PROP. POLYMERIZED HMA SURFACE COURSE, MIX "F", N90, 2"  
 -PROP. POLYMERIZED HMA BINDER COURSE, N90, 10 1/2" (IL 72) AND 9 1/2" (RANDALL RD.)  
 -PROP. AGGREGATE SUBGRADE, 12"
- ③ P.E. DRIVEWAY  
 -PROP. HMA SURFACE COURSE, MIX "C", N50, 2"  
 -PROP. HMA BASE COURSE, 6"

- ④ C.E. DRIVEWAY  
 -PROP. HMA SURFACE COURSE, MIX "C", N50, 2"  
 -PROP. HMA BASE COURSE, TYPE B, 8"
- ⑤ FIELD ENTRANCE  
 -PROP. HMA SURFACE COURSE, MIX "C", N50, 2"  
 -PROP. AGGREGATE BASE COURSE, TYPE B, 8"
- ⑥ SHOULDER  
 -PROP. POLYMERIZED HMA SURFACE COURSE, MIX "F", N90, 2"  
 -PROP. POLYMERIZED HMA BINDER COURSE, N90, 9 1/2" (RANDALL RD.) AND 10 1/2" (IL 72)  
 -PROP. AGGREGATE SUBGRADE, 12"

EXIST. CURVE E\_RNDL-2  
 PI STA. = 192+35.37  
 $\Delta = 2^\circ 43' 43''$  (RT)  
 $D = 1^\circ 09' 38''$   
 $R = 4,937.04'$   
 $T = 117.58'$   
 $L = 235.12'$   
 $E = 1.40'$   
 $e =$   
 $T.R. =$   
 $S.E. RUN =$   
 $P.C. STA. = 191+17.79$   
 $P.T. STA. = 193+52.90$

PROPOSED

NOTE: REFER TO PLAT OF HIGHWAYS FOR R.O.W. AND EASEMENT DIMENSIONS.

FILE NAME = P110008-sht-plan.dgn	USER NAME = drivakosgn	DESIGNED - DRAWN -	REVISED - REVISED -
PLOT SCALE = 50.0000' / IN.	CHECKED -	REVISED -	REVISED -
PLOT DATE = 5/31/2011	DATE -	REVISED -	REVISED -

**STATE OF ILLINOIS  
 DEPARTMENT OF TRANSPORTATION**

**RANDALL ROAD @ IL. ROUTE 72 (HIGGINS ROAD)  
 EXISTING & PROPOSED ROADWAY PLAN**

SCALE: 1" = 50' SHEET NO. OF SHEETS STA. 185+00.00 TO STA. 198+00.00

F.A.P. RTE. 341	SECTION 62-N-1	COUNTY KANE	TOTAL SHEETS 148	SHEET NO. 23
CONTRACT NO. 60K09				ILLINOIS FED. AID PROJECT

19:30:57 05/22/2011