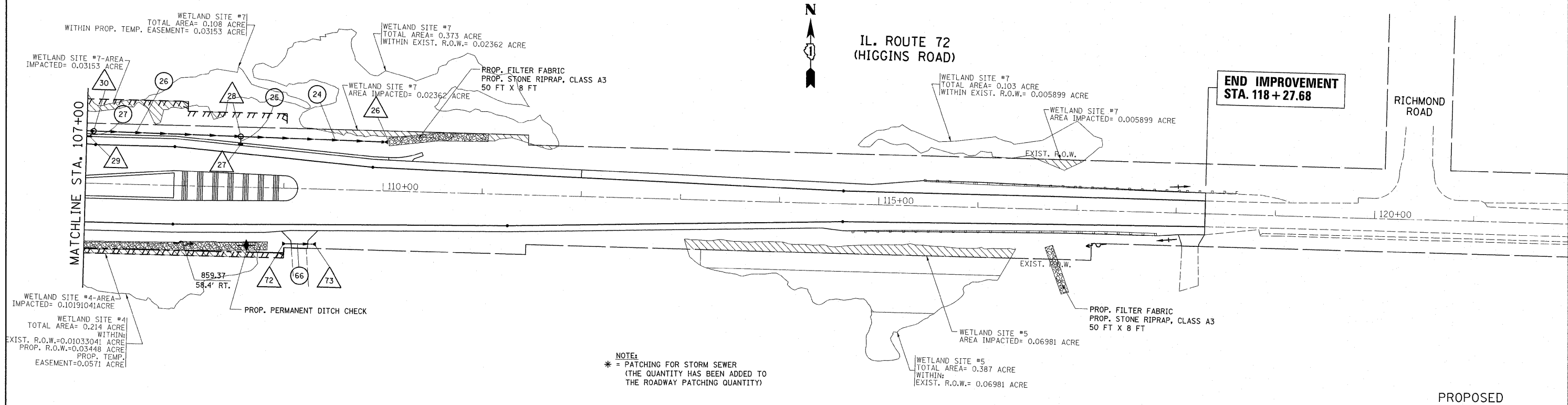
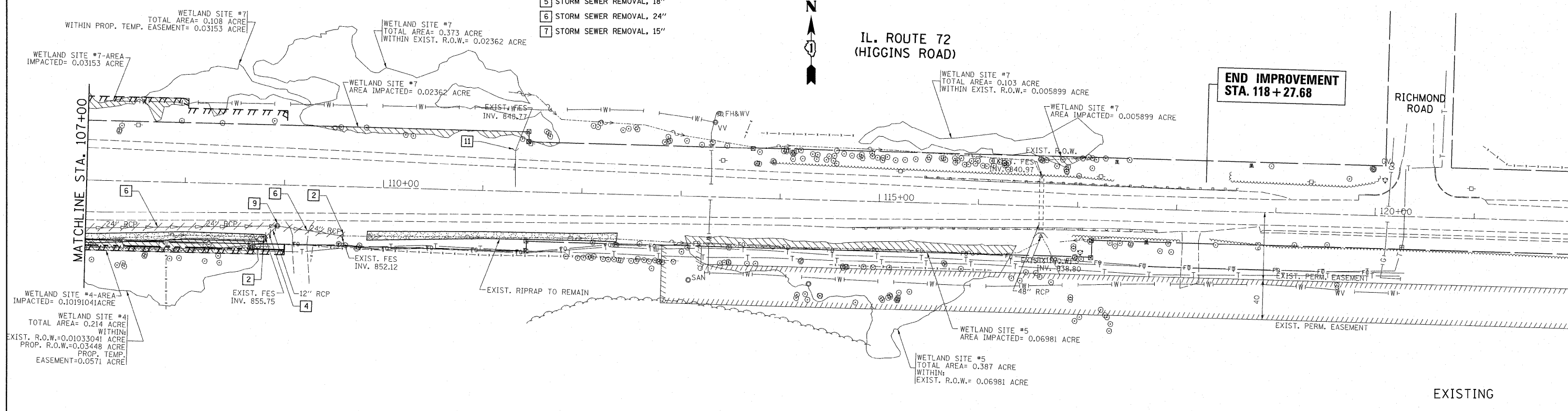


- LEGEND**
- 1 PIPE CULVERT REMOVAL (TYP.)
  - 2 FLARED END SECTION REMOVAL
  - 3 PIPE UNDERDRAIN REMOVAL
  - 4 STORM SEWER REMOVAL, 12"
  - 5 STORM SEWER REMOVAL, 18"
  - 6 STORM SEWER REMOVAL, 24"
  - 7 STORM SEWER REMOVAL, 15"
  - 8 STORM SEWER REMOVAL, 30"
  - 9 REMOVING MANHOLES
  - 10 REMOVING CATCH BASINS
  - 11 CONCRETE HEADWALL FOR PIPE UNDERDRAIN REMOVAL



**NOTE:**  
 \* = PATCHING FOR STORM SEWER  
 (THE QUANTITY HAS BEEN ADDED TO  
 THE ROADWAY PATCHING QUANTITY)

FILE NAME = P110008-shd-drain.dgn  
 USER NAME = poosheal  
 PLOT SCALE = 50.0000' / 1" =  
 PLOT DATE = 6/23/2011

DESIGNED -	REVISED -
DRAWN -	REVISED -
CHECKED -	REVISED -
DATE -	REVISED -

**STATE OF ILLINOIS  
 DEPARTMENT OF TRANSPORTATION**

**IL. ROUTE 72 (HIGGINS RD.) AT RANDALL RD.  
 EXISTING & PROPOSED DRAINAGE SHEET**

SCALE: 1" = 50'    SHEET NO.    OF    SHEETS    STA. 107+00.00 TO STA. 122+00.00

F.A.P. RTE. 341	SECTION 62-N-1	COUNTY KANE	TOTAL SHEETS 148	SHEET NO. 32
CONTRACT NO. 60K09				
ILLINOIS FED. AID PROJECT				