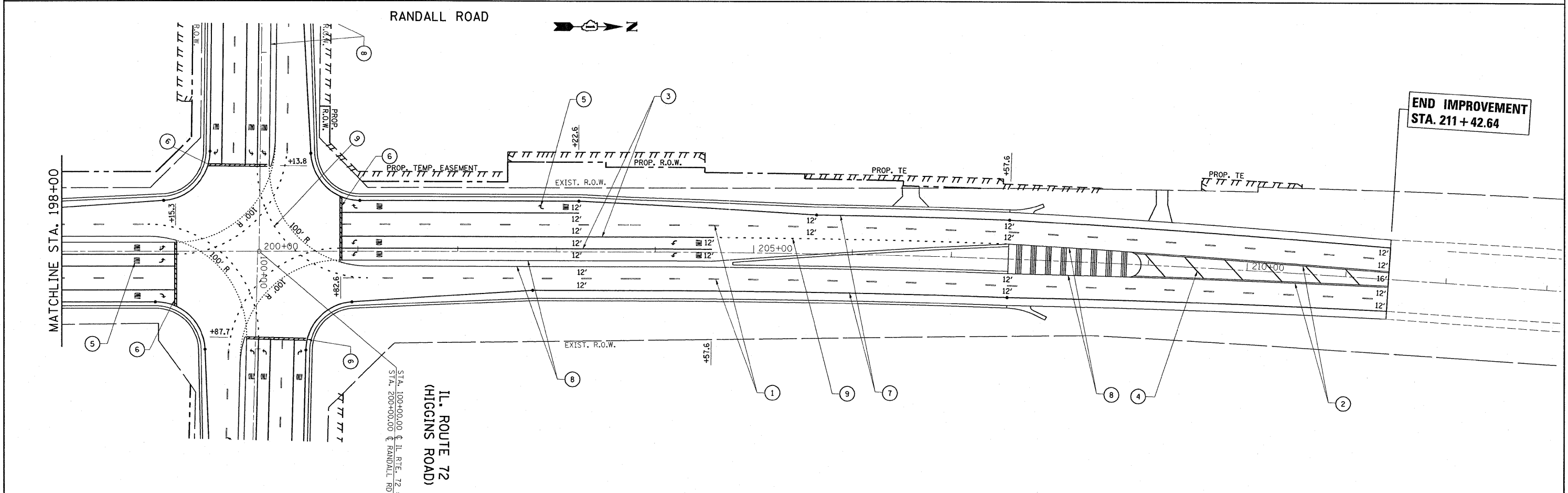


- LEGEND (RANDALL RD.)**
- ① PROP. URETHANE PAVEMENT MARKING LINE 4" SKIP DASH @ 30' SKIP & 10' DASH, WHITE (TYP.)
 - ② PROP. URETHANE PAVEMENT MARKING LINE 4" DOUBLE LINE @ 11" C-C, YELLOW (TYP.)
 - ③ PROP. URETHANE PAVEMENT MARKING LINE 6" TURN LANE, WHITE (TYP.)
 - ④ PROP. URETHANE PAVEMENT MARKING LINE 12" DIAGONALS @ 45°, YELLOW (TYP.), 150' SPACING.
 - ⑤ PROP. URETHANE PAVEMENT MARKING LETTERS & SYMBOLS, WHITE (TYP.)
 - ⑥ PROP. URETHANE PAVEMENT MARKING LINE 24" STOP BAR, WHITE (TYP.)
 - ⑦ PROP. URETHANE PAVEMENT MARKING LINE 4" EDGE LINE, WHITE (TYP.)
 - ⑧ PROP. URETHANE PAVEMENT MARKING LINE 4" EDGE LINE, YELLOW (TYP.)
 - ⑨ PROP. URETHANE PAVEMENT MARKING LINE 6" DOTTED @ 6' SKIP & 2' DASH, WHITE (TYP.)

NOTES:
 1. ALL THE PAVEMENT MARKING FOR RANDALL RD. SHALL BE URETHANE PAVEMENT MARKING.
 2. THERE WILL BE NO RAISED REFLECTIVE PAVEMENT MARKERS INSTALLATION ON RANDALL RD.



FILE NAME = P110008-sht-pmk.dgn	USER NAME = drvakosgn	DESIGNED -	REVISED -	STATE OF ILLINOIS DEPARTMENT OF TRANSPORTATION	RANDALL ROAD @ IL. ROUTE 72 (HIGGINS ROAD) PAVEMENT MARKING	F.A.P. RTE. 341	SECTION 62-N-1	COUNTY KANE	TOTAL SHEETS 148	SHEET NO. 58		
PLOT SCALE = 50.0000' / IN.	CHECKED -	REVISED -	SCALE: 1" = 50'			SHEET NO. OF SHEETS	STA. 185+00.00 TO STA. 212+00.00	CONTRACT NO. 60K09				
PLOT DATE = 5/31/2011	DATE -	REVISED -	ILLINOIS FED. AID PROJECT									

19:29:41 05/22/2011