

STATE OF ILLINOIS
DEPARTMENT OF TRANSPORTATION
DIVISION OF HIGHWAYS

**PROPOSED
HIGHWAY PLANS**

FAP ROUTE 348 (IL 43 / HARLEM AVE)
SECTION 2010-084-RS
RESURFACING AND DRAINAGE IMPROVEMENTS
65TH STREET TO 79TH STREET

COOK COUNTY
C-91-022-11

F.A.P. RTE.	SECTION	COUNTY	TOTAL SHEETS	SHEET NO.
348	2010-084-RS	COOK	27	1
ILLINOIS			CONTRACT NO. 60L78	

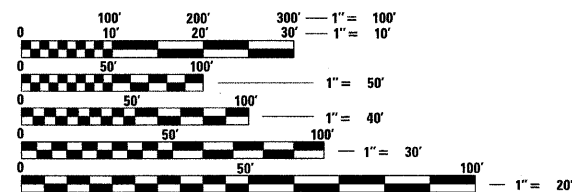
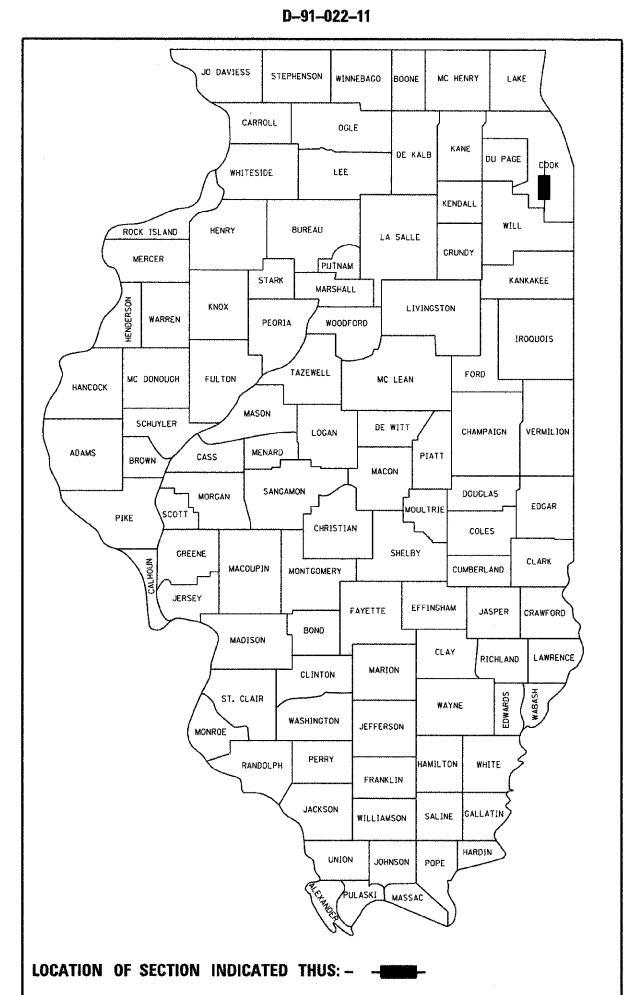
*27+2=29

FOR INDEX OF SHEETS, SEE SHEET NO. 2

TRAFFIC DATA

EXISTING ADT = 37,300 TO 45,500 (2007)
SPEED LIMIT = 45 MPH

THE IMPROVEMENT IS LOCATED WITHIN
THE VILLAGES OF BRIDGEVIEW, BEDFORD PARK,
SUMMIT AND THE CITY OF BURBANK

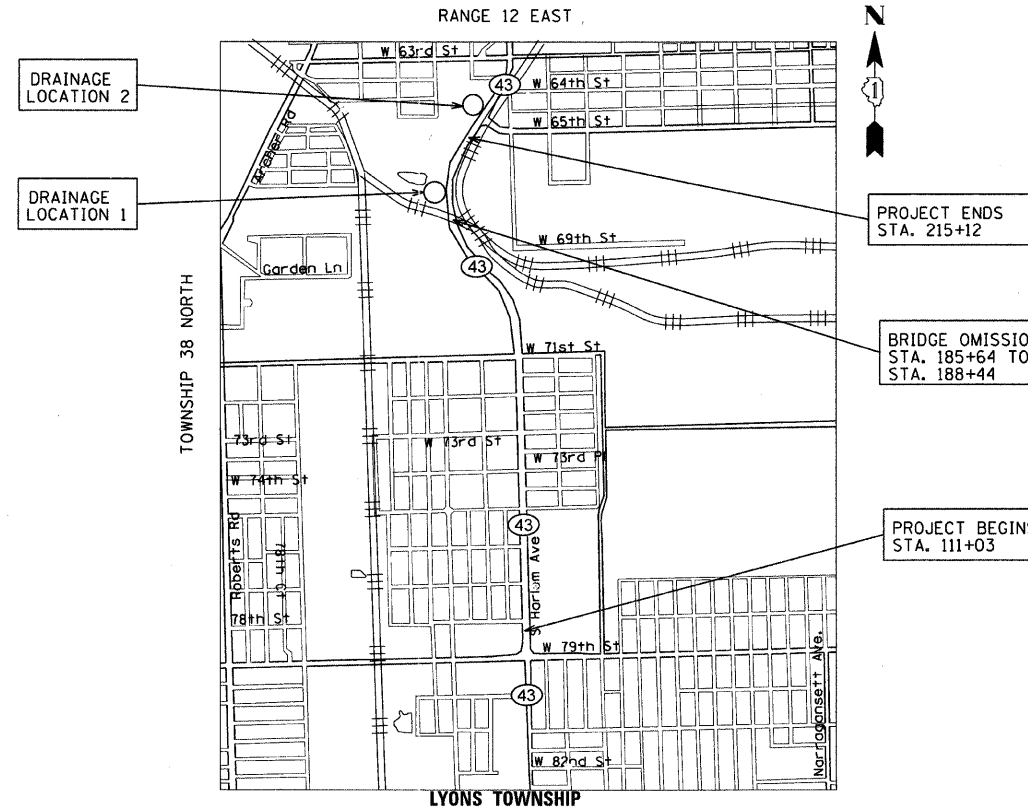


FULL SIZE PLANS HAVE BEEN PREPARED USING STANDARD ENGINEERING SCALES. REDUCED SIZED PLANS WILL NOT CONFORM TO STANDARD SCALES. IN MAKING MEASUREMENTS ON REDUCED PLANS, THE ABOVE SCALES MAY BE USED.

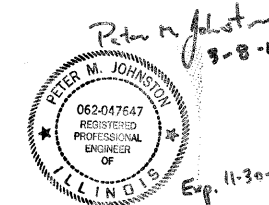
J.U.L.I.E.
JOINT UTILITY LOCATION INFORMATION FOR EXCAVATION
1-800-892-0123
OR 811

PROJECT ENGINEER: PETER JOHNSTON (GRAEF) 773-399-0112
PROJECT MANAGER: KEN ENG (IDOT) 847-705-4247

CONTRACT NO. 60L78



GROSS LENGTH = 10,409 FT. = 1.97 MILES
NET LENGTH = 10,130 FT. = 1.92 MILES



STATE OF ILLINOIS
DEPARTMENT OF TRANSPORTATION
DIVISION OF HIGHWAYS

SUBMITTED MARCH 9, 2011

Diana M. O'Keefe
DEPUTY DIRECTOR OF HIGHWAYS, REGION ENGINEER

August 19, 2011
Scott E. Stitt P.E.
acting ENGINEER OF DESIGN AND ENVIRONMENT

August 19, 2011
Christine M. Reed
DIRECTOR OF HIGHWAYS, CHIEF ENGINEER

PRINTED BY THE AUTHORITY
OF THE STATE OF ILLINOIS

GRAEF 8501 W. Higgins Road, Suite 280
Chicago, Illinois 60631
(773) 399-0112