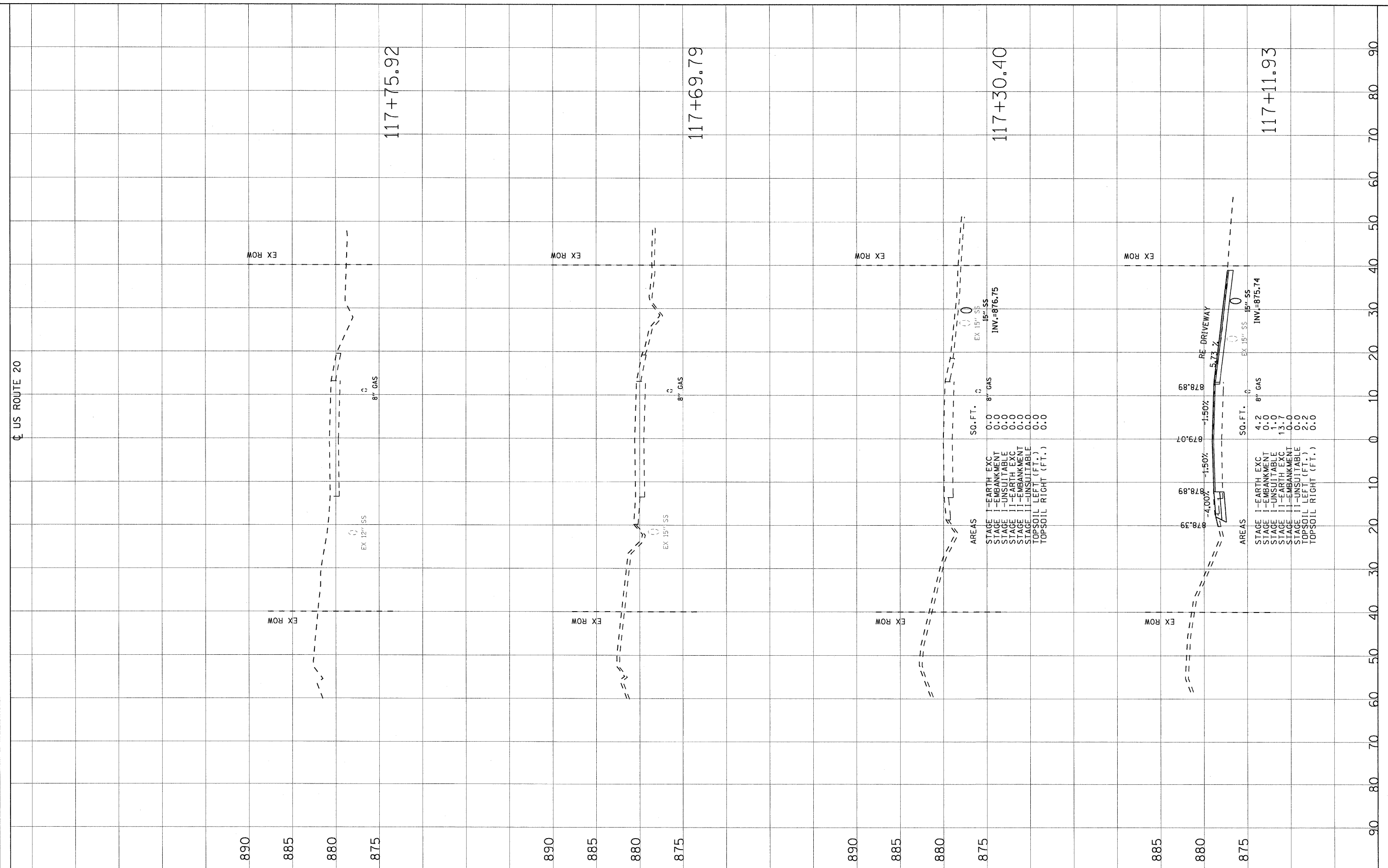


FINAL SURVEY	SURVEYED	BY	DATE
NOTE BOOK	PLOTTED		
NO.	TEMPLATE		
	AREAS CHECKED		
	AREAS CHECKED		

ORIGINAL SURVEY	SURVEYED	BY	DATE
NOTE BOOK	PLOTTED		
NO.	TEMPLATE		
	AREAS CHECKED		
	AREAS CHECKED		

FILE NAME = G:\pco\res\2\02105_003\CD00\C111\SH1\0160\632\2417\900.dgn



USER NAME = 2KLUJAWC
 PLOT SCALE = 10.00000' / IN.
 PLOT DATE = 06/17/2011

DESIGNED - DJB
 DRAWN - ENTRAN
 CHECKED - TMH
 DATE - 06/24/11

REVISED - 9-8-11 Rev.
 REVISED -
 REVISED -
 REVISED -

STATE OF ILLINOIS
 DEPARTMENT OF TRANSPORTATION

FAP ROUTE 525 (US ROUTE 20) OVER DRAINAGE DITCH
 US ROUTE 20 CROSS SECTIONS
 SCALE: 1"=5'V/10'H SHEET NO. OF SHEETS STA. TO STA.

F.A.P. RTE. 525	SECTION 11-T-1	COUNTY McHENRY	TOTAL SHEETS 34	SHEET NO. 34
FED. ROAD DIST. NO. ILLINOIS FED. AID PROJECT			CONTRACT NO. 60M53	