

F.A.P. RTE.	SECTION	COUNTY	TOTAL SHEETS	SHEET NO.
525	11-T-1	Mc HENRY	34	1
		ILLINOIS	CONTRACT NO. 60M53	

D-91-125-11

FOR INDEX OF SHEETS, SEE SHEET NO. 2

STATE OF ILLINOIS
DEPARTMENT OF TRANSPORTATION
DIVISION OF HIGHWAYS

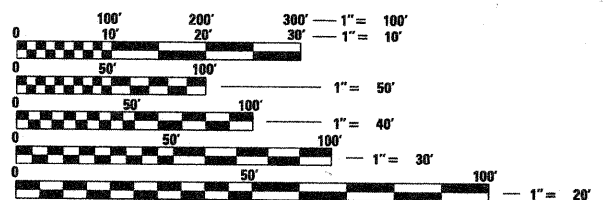
**PROPOSED
HIGHWAY PLANS**
FAP ROUTE 525 - US ROUTE 20 (GRANT HWY.)
OVER DRAINAGE DITCH
SECTION 11 - T - 1
PROJECT: F-0525(117)
CULVERT REPLACEMENT
Mc HENRY COUNTY
C-91-125-11



TRAFFIC DATA

EXISTING ADT = 7,900 (2009)
POSTED SPEED = 55 MPH

PROJECT IS LOCATED IN CORAL TOWNSHIP

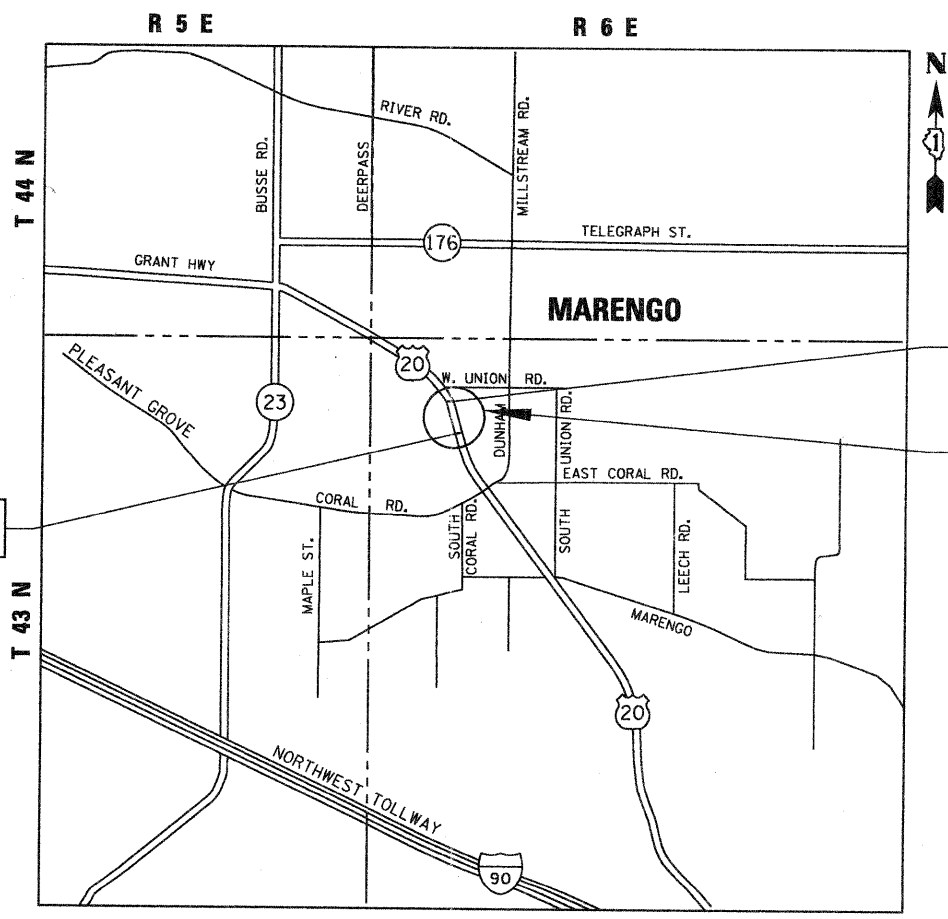


FULL SIZE PLANS HAVE BEEN PREPARED USING STANDARD ENGINEERING SCALES. REDUCED SIZED PLANS WILL NOT CONFORM TO STANDARD SCALES. IN MAKING MEASUREMENTS ON REDUCED PLANS, THE ABOVE SCALES MAY BE USED.

J.U.L.I.E.
JOINT UTILITY LOCATION INFORMATION FOR EXCAVATION
1-800-892-0123
OR 811

PROJECT ENGINEER ROBERT BORO
PROJECT MANAGER ISSAM RAYYAN

CONTRACT NO. 60M53



PROJECT BEGINS
STA. 111 + 19.70

PROJECT ENDS
STA. 117 + 30.40

PROJECT LOCATION
US ROUTE 20 (GRANT HWY.)
OVER DRAINAGE DITCH
EXISTING SN. 056-0088
PROPOSED SN. 056-0276

CORAL TWP
LOCATION MAP
NOT TO SCALE
GROSS LENGTH = 610.70 FT. = 0.116 MILE
NET LENGTH = 610.70 FT. = 0.116 MILE



Thomas M. Hein
THOMAS M. HEIN, P. E.
IL. LIC. NO. 062-053199
EXP 11-30-2011
DATE 06-29-2011

STATE OF ILLINOIS
DEPARTMENT OF TRANSPORTATION
DIVISION OF HIGHWAYS
SUBMITTED JULY 6, 20 11
Diana M. O'Keefe
DEPUTY DIRECTOR OF HIGHWAYS, REGION ENGINEER
August 19 20 11
Scott E. Stett, P.E.
acting ENGINEER OF DESIGN AND ENVIRONMENT
August 19 20 11
Christine M. Road
DIRECTOR OF HIGHWAYS, CHIEF ENGINEER

PRINTED BY THE AUTHORITY
OF THE STATE OF ILLINOIS