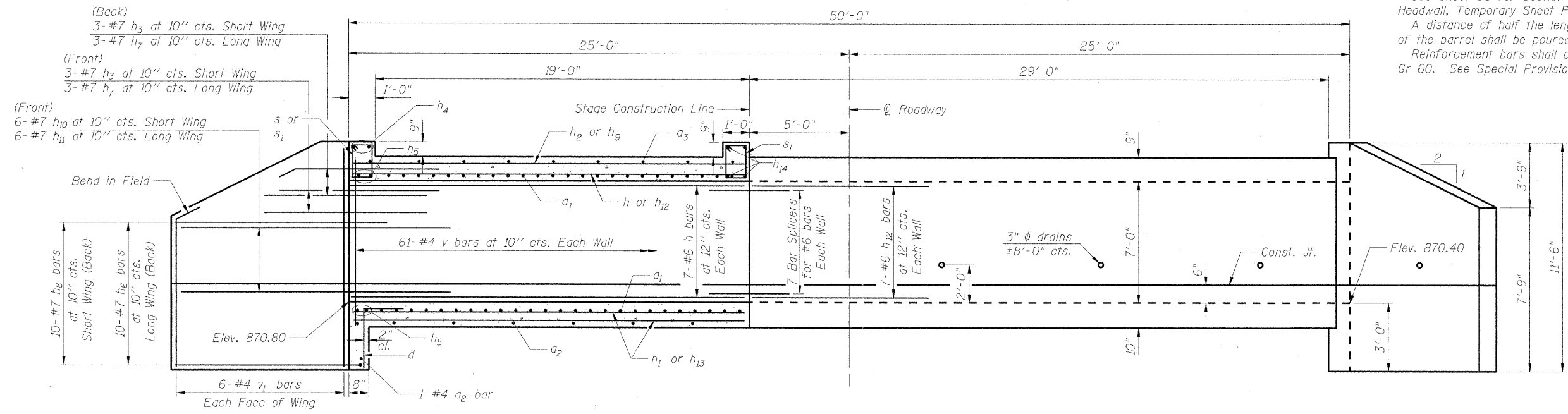


NOTES

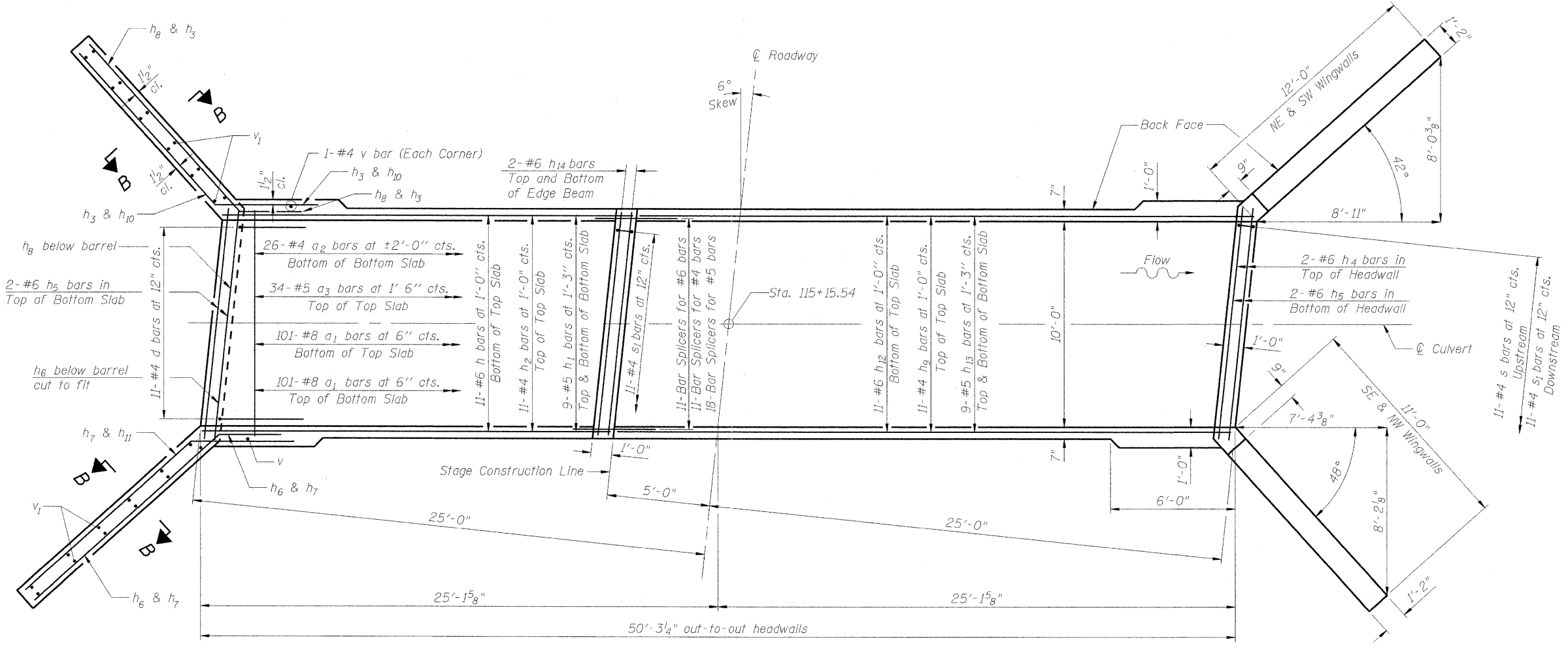
See Sheet S3 for Section B-B, Section Thru Barrel, Section Thru Headwall, Temporary Sheet Piling, bar diagrams and Bill of Material.
 A distance of half the length of the wingwall but not less than six feet of the barrel shall be poured monolithically with the wingwalls.
 Reinforcement bars shall conform to the requirements of ASTM A 706 Gr 60. See Special Provisions.



HALF LONG SECTION

HALF ELEVATION

Dimensions at Rt. L's to \odot Roadway



PLAN

FILE NAME = g:\project\2182185_203\cadd\structure\5568276_60163_002\Culvert Details.dgn



USER NAME = zwayrb
PLOT SCALE = N/A
PLOT DATE = 7/6/2011

DESIGNED - TWO
CHECKED - BHS
DRAWN - TWO
CHECKED - BHS

REVISED -
REVISED -
REVISED -
REVISED -

**STATE OF ILLINOIS
DEPARTMENT OF TRANSPORTATION**

**CULVERT DETAILS (1 OF 2)
S.N. 056-0279 - U.S. ROUTE 20 OVER DRAINAGE DITCH**

SHEET NO. S2 OF 6 SHEETS

F.A.P. RTE. 525	SECTION 11-T-1	COUNTY McHENRY	TOTAL SHEETS 34	SHEET NO. 16
FED. ROAD DIST. NO. 1 ILLINOIS			CONTRACT NO. 60M53	