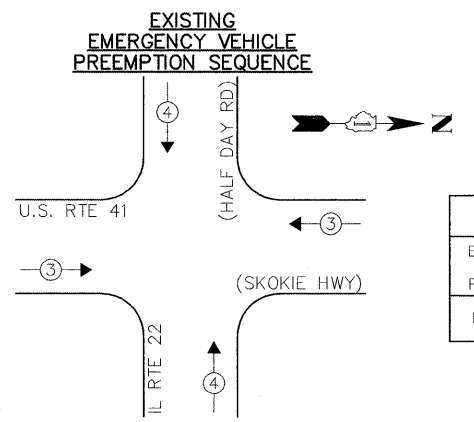
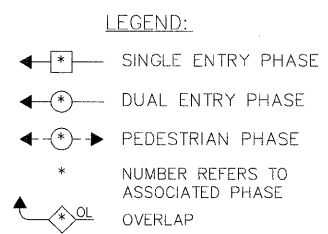
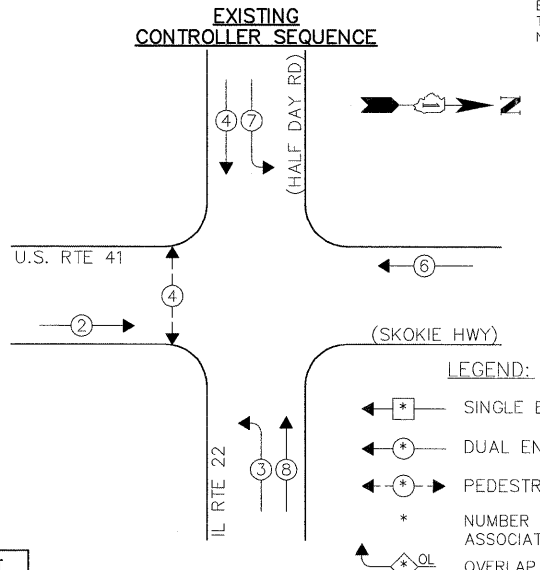
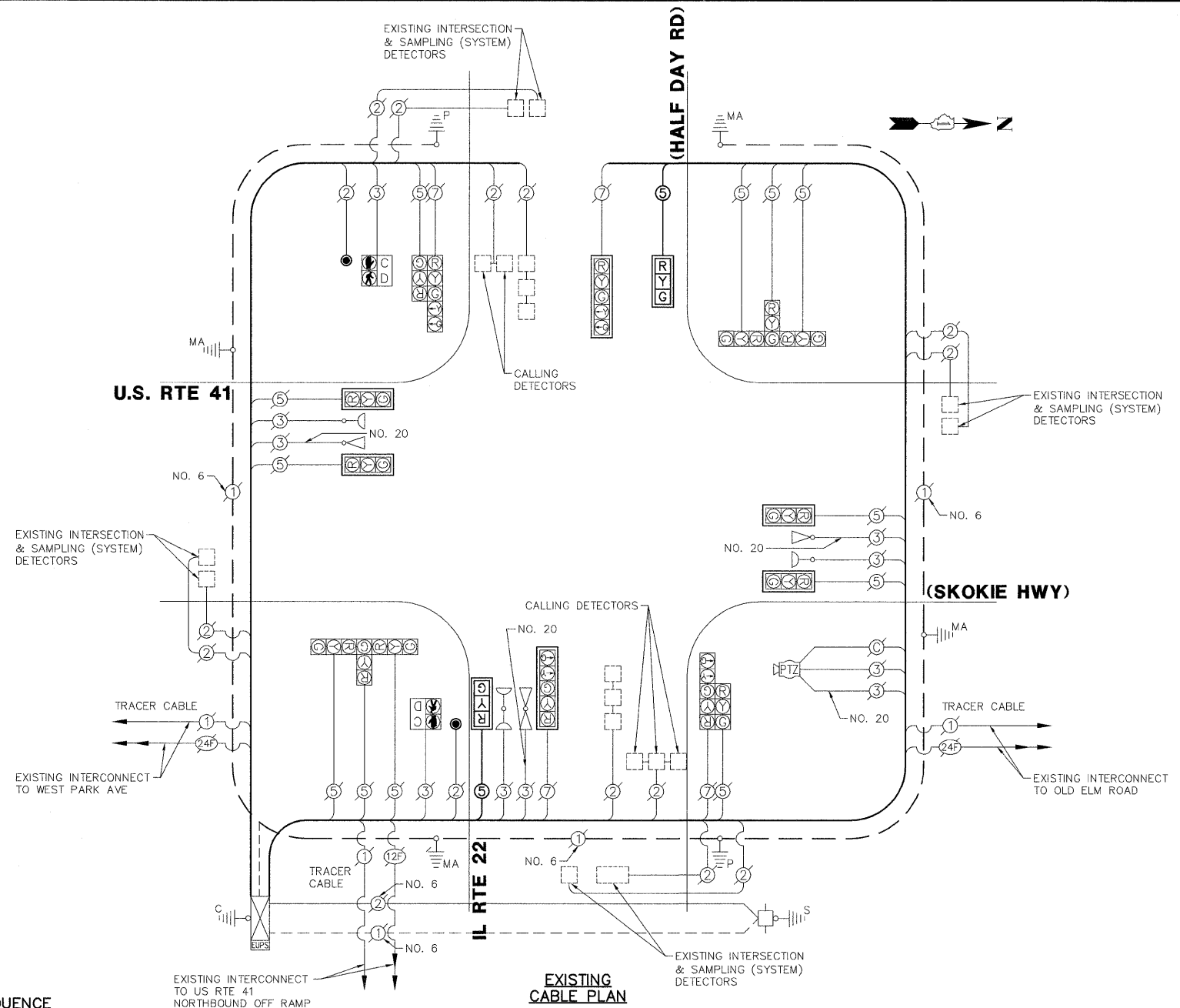


SCHEDULE OF QUANTITIES
U.S. RTE 41 (SKOKIE HIGHWAY) AT IL RTE 22 (HALF DAY ROAD)

NO.	QUANT.	UNIT	DESCRIPTION
1.	1	EACH	MAINTENANCE OF EXISTING TRAFFIC SIGNAL INSTALLATION
2.	491	FOOT	ELECTRIC CABLE IN CONDUIT, SIGNAL NO. 14 5C
3.	2	EACH	SIGNAL HEAD, LED, 1-FACE, 3-SECTION, MAST-ARM MOUNTED
4.	2	EACH	PEDESTRIAN PUSH-BUTTON
5.	8	EACH	RETROREFLECTIVE TRAFFIC SIGNAL BACKPLATE



EMERGENCY VEHICLE PREEMPTOR	NO.
EMERGENCY VEHICLE PREEMPTOR	3
MOVEMENT	4

EXISTING PHASE DESIGNATION DIAGRAM

I.D.O.T. TRAFFIC SIGNAL INSTALLATION ELECTRICAL SERVICE REQUIREMENTS					TOTAL WATTAGE
TYPE	NO. LAMPS	WATTAGE INCAND.	WATTAGE L.E.D.	% OPERATION	
SIGNAL (RED)	18	135	17	0.50	153.0
SIGNAL (YELLOW)	18	135	25	0.25	112.5
SIGNAL (GREEN)	18	135	15	0.25	67.5
ARROW	8	135	12	0.10	9.6
PED. SIGNAL	2	90	25	1.00	50.0
CONTROLLER	1	-	100	1.00	100.0
LUMINAIRE	-	-	250	0.50	-
L.E.D. ST. NAME SIGN	-	-	64	0.50	-
VIDEO SYSTEM	-	-	150	1.00	-
BATTERY BACKUP	1	-	25	1.00	25.0
ILLUMINATED SIGN	-	-	25	0.05	-
TOTAL =					517.6

ENERGY COSTS - BILLED TO: CITY OF HIGHLAND PARK (ADDRESS) 1707 ST. JOHNS AVENUE (ADDRESS) HIGHLAND PARK, IL 60035
ENERGY SUPPLY - CONTACT: JEAN WILL (PHONE) 847.816.5459 (COMPANY) COMED

THE TRAFFIC SIGNAL CONTROL EQUIPMENT FOR THIS PROJECT SHALL BE "ECONOLITE" TO MATCH THE EXISTING ADJACENT SYSTEM.

FILE NAME = 4085.B74-TR1.dwg	USER NAME = ZACH WALLSTEN	DESIGNED - JRD	REVISED -
PLOT SCALE = 1" = .0833'	CHECKED - KLB	REVISIONS	REVISED -
PLOT DATE = 6/30/2011	DATE - 6/30/2011	REVISED - 346	

STATE OF ILLINOIS DEPARTMENT OF TRANSPORTATION

SCHEDULE OF QUANTITIES, CABLE PLAN, PHASE DESIGNATION DIAGRAM, & EMERGENCY VEHICLE PREEMPTION SEQUENCE
U.S. RTE 41 (SKOKIE HWY) AT IL RTE 22 (HALF DAY RD)

SCALE: N.A. SHEET NO. OF SHEETS STA. TO STA.

F.A.P. RTE. 346	SECTION 2011-042-TS	COUNTY LAKE	TOTAL SHEETS 62	SHEET NO. 17
CONTRACT # 60P49			GHA #4085.874	
ILLINOIS FED. AID PROJECT				