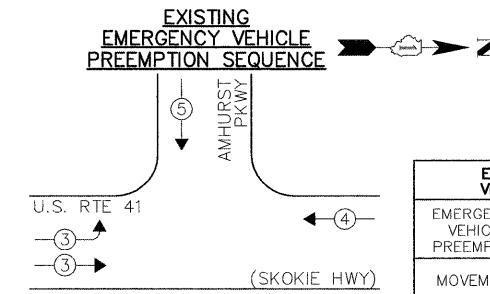
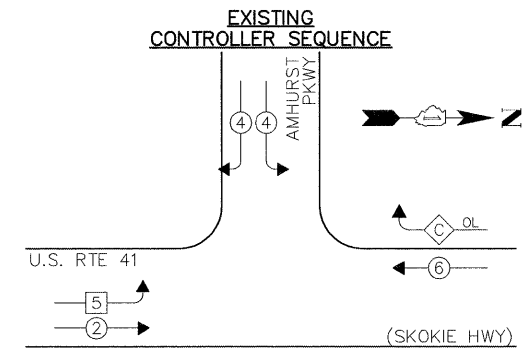
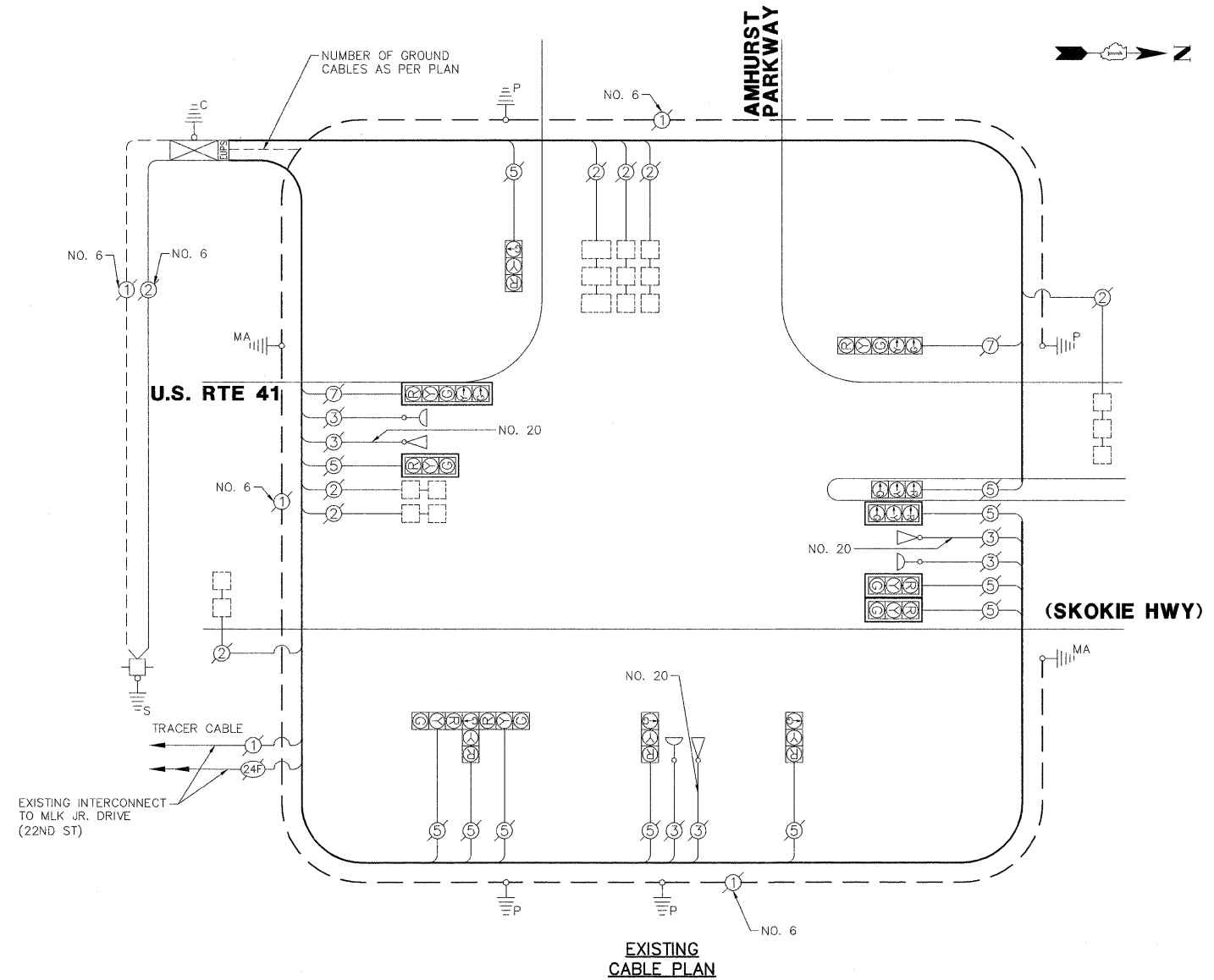


**SCHEDULE OF QUANTITIES**  
U.S. RTE 41 (SKOKIE HIGHWAY) AT AMHURST PARKWAY

| NO. | QUANT. | UNIT   |
|-----|--------|--|
| 1.  | 1      | EACH MAINTENANCE OF EXISTING TRAFFIC SIGNAL INSTALLATION |
| 2.  | 1      | EACH REMOVE EXISTING TRAFFIC SIGNAL EQUIPMENT            |
| 3.  | 5      | EACH RETROREFLECTIVE TRAFFIC SIGNAL BACKPLATE            |



OVERLAP PERMISSIVE PROTECTED  
LETTER PHASE PHASE  
C = 6 + 4

- LEGEND:**
- ◀ \* ▶ SINGLE ENTRY PHASE
  - ◀ \* DUAL ENTRY PHASE
  - ◀ \* ▶ PEDESTRIAN PHASE
  - \* NUMBER REFERS TO ASSOCIATED PHASE
  - ◀ \* OL ▶ OVERLAP

| EXISTING EMERGENCY VEHICLE PREEMPTORS |   |   |   |
|---------------------------------------|---|---|---|
| EMERGENCY VEHICLE PREEMPTOR           | 3 | 4 | 5 |
| MOVEMENT                              | → | ← | ↓ |

**EXISTING PHASE DESIGNATION DIAGRAM**

| I.D.O.T. TRAFFIC SIGNAL INSTALLATION ELECTRICAL SERVICE REQUIREMENTS |           |         |             |      | TOTAL WATTAGE |
|--|-----------|---------|-------------|------|---------------|
| TYPE   | NO. LAMPS | WATTAGE | % OPERATION |      |               |
| SIGNAL (RED)   | 13        | 135     | 17          | 0.50 | 110.50        |
| SIGNAL (YELLOW)  | 13        | 135     | 25          | 0.25 | 81.25         |
| SIGNAL (GREEN)   | 13        | 135     | 15          | 0.25 | 45.75         |
| ARROW  | 4         | 135     | 12          | 0.10 | 4.80          |
| PED. SIGNAL  | -         | 90      | 25          | 1.00 | -             |
| CONTROLLER   | 1         | -       | 100         | 1.00 | 100.00        |
| LUMINAIRE  | -         | 250     | 0.50        | -    | -             |
| L.E.D. ST. NAME SIGN   | -         | 64      | 0.50        | -    | -             |
| VIDEO SYSTEM   | -         | 150     | 1.00        | -    | -             |
| BATTERY BACKUP   | 1         | 25      | 1.00        | -    | 25.00         |
| ILLUMINATED SIGN   | -         | 25      | 0.05        | -    | -             |
| <b>TOTAL =</b>   |           |         |             |      | <b>367.30</b> |

ENERGY COSTS - BILLED TO: IDOT DISTRICT 1  
(ADDRESS) 201 WEST CENTER STREET  
(ADDRESS) SCHALMBURG, IL  
ENERGY SUPPLY - CONTACT: ALICE TAYLOR  
PHONE: 847.816.5458  
COMPANY: COMED

THE TRAFFIC SIGNAL CONTROL EQUIPMENT FOR THIS PROJECT SHALL BE "EAGLE" TO MATCH THE EXISTING ADJACENT SYSTEM.

|                              |                           |                |           |
|------------------------------|---------------------------|----------------|-----------|
| FILE NAME = 4085.874-TR1.dwg | USER NAME = ZACH WALLSTEN | DESIGNED - JRD | REVISED - |
| PLOT SCALE = 1" = .0833'     | CHECKED - KLB             | DRAWN - JRM    | REVISED - |
| PLOT DATE = 6/30/2011        | DATE - 6/30/2011          | REVISIONS      | REVISED - |

**STATE OF ILLINOIS  
DEPARTMENT OF TRANSPORTATION**

**SCHEDULE OF QUANTITIES, CABLE PLAN, PHASE DESIGNATION  
DIAGRAM, & EMERGENCY VEHICLE PREEMPTION SEQUENCE  
U.S. RTE 41 (SKOKIE HWY) AT AMHURST PARKWAY**

SCALE: N.A. SHEET NO. OF SHEETS STA. TO STA.

|                           |                     |             |                 |              |
|---------------------------|---------------------|-------------|-----------------|--------------|
| F.A.P. RTE. NO. 346       | SECTION 2011-042-TS | COUNTY LAKE | TOTAL SHEETS 62 | SHEET NO. 41 |
| CONTRACT #: 60P49         |                     |             |                 | GH# 4085.874 |
| ILLINOIS FED. AID PROJECT |                     |             |                 |              |