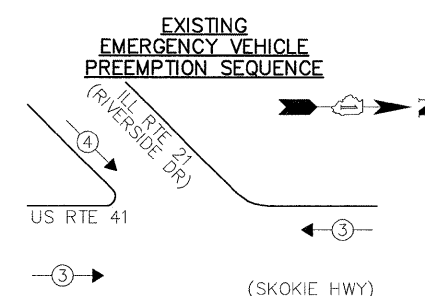
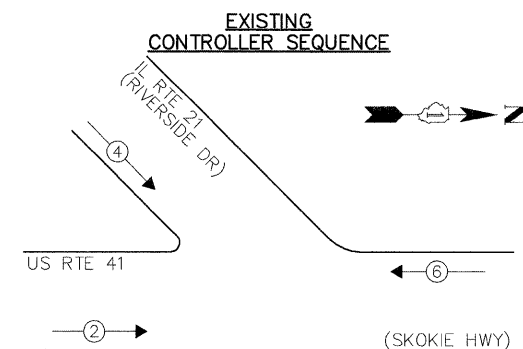
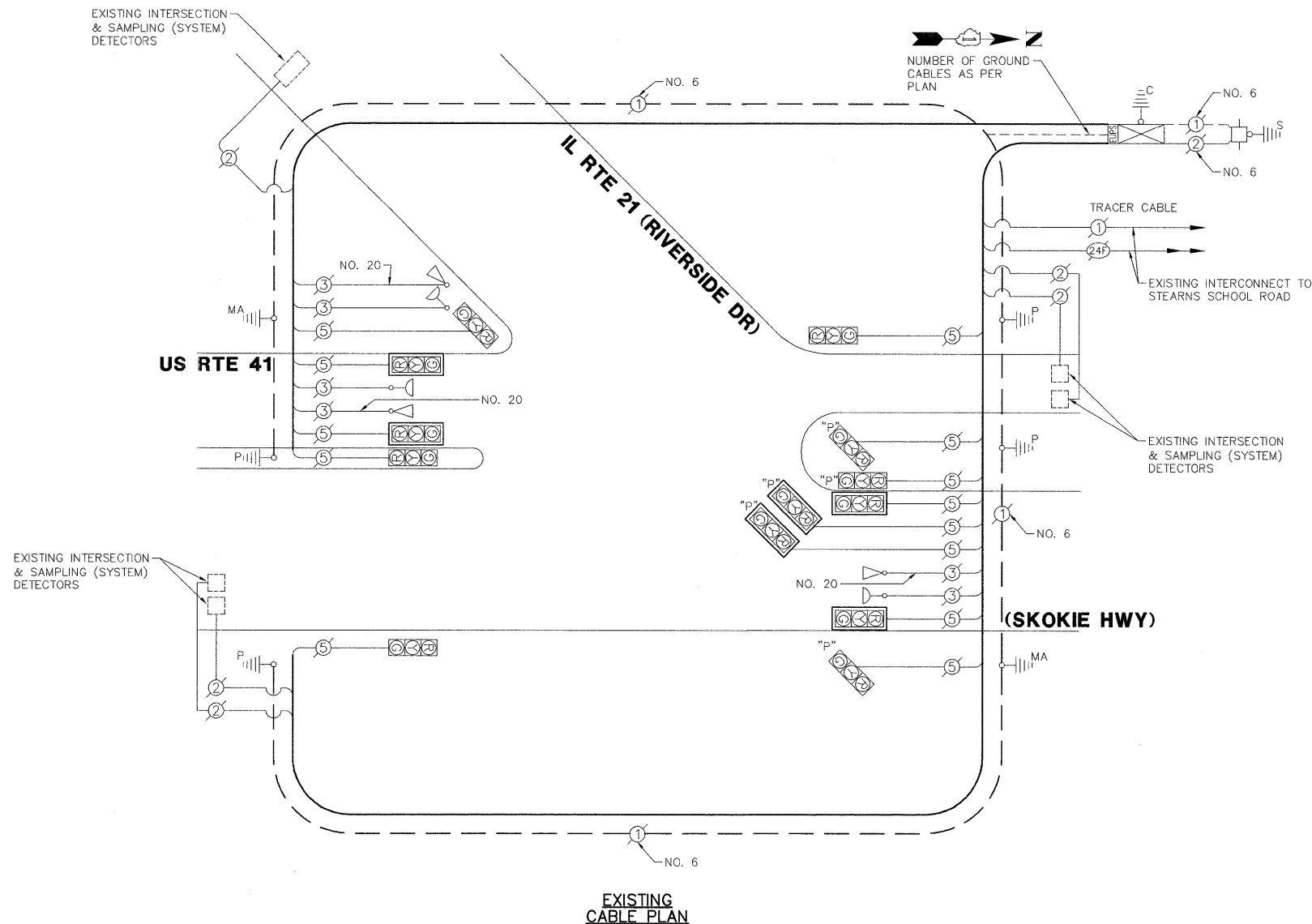


SCHEDULE OF QUANTITIES

U.S. RTE 41 (SKOKIE HIGHWAY) AT IL RTE 21 (RIVERSIDE DRIVE)

NO.	QUANT.	UNIT
1.	1	EACH MAINTENANCE OF EXISTING TRAFFIC SIGNAL INSTALLATION
2.	1	EACH REMOVE EXISTING TRAFFIC SIGNAL EQUIPMENT
3.	6	EACH RETROREFLECTIVE TRAFFIC SIGNAL BACKPLATE



- LEGEND:**
- ◀[*] SINGLE ENTRY PHASE
 - ◀[*] DUAL ENTRY PHASE
 - ◀[*] PEDESTRIAN PHASE
 - * NUMBER REFERS TO ASSOCIATED PHASE
 - ◀[*] OVERLAP

EXISTING EMERGENCY VEHICLE PREEMPTORS	
EMERGENCY VEHICLE PREEMPTOR	3
MOVEMENT	4

EXISTING PHASE DESIGNATION DIAGRAM

I.D.O.T. TRAFFIC SIGNAL INSTALLATION ELECTRICAL SERVICE REQUIREMENTS					TOTAL WATTAGE
TYPE	NO. LAMPS	INCAND.	L.E.D.	% OPERATION	
SIGNAL (RED)	13	135	17	0.50	110.50
SIGNAL (YELLOW)	13	135	25	0.25	81.25
SIGNAL (GREEN)	13	135	15	0.25	48.75
ARROW	-	135	12	0.10	-
PED. SIGNAL	-	90	25	1.00	-
CONTROLLER	1	-	100	1.00	100.00
LUMINAIRE	-	250	0.50	-	-
L.E.D. ST. NAME SIGN	-	64	0.50	-	-
VIDEO SYSTEM	-	150	1.00	-	-
BATTERY BACKUP	1	25	1.00	25.00	25.00
ILLUMINATED SIGN	-	25	0.05	-	-
TOTAL =					365.5

ENERGY COSTS - BILLED TO: IDOT DISTRICT 1
 (ADDRESS) 201 WEST CENTER COURT
 (ADDRESS) SCHAUMBURG, IL 60196
 ENERGY SUPPLY - CONTACT: ALICE TAYLOR
 PHONE: 847.816.5458
 COMPANY: COMED

THE TRAFFIC SIGNAL CONTROL EQUIPMENT FOR THIS PROJECT SHALL BE "EAGLE" TO MATCH THE EXISTING ADJACENT SYSTEM.

FILE NAME = 4085.874-TR1.dwg	USER NAME = ZACH WALLSTEN	DESIGNED - JRD	REVISED -
PLOT SCALE = 1" = .0833'	CHECKED - KLB	DATE - 6/30/2011	REVISED -

STATE OF ILLINOIS
DEPARTMENT OF TRANSPORTATION

SCHEDULE OF QUANTITIES, CABLE PLAN, PHASE DESIGNATION DIAGRAM, & EMERGENCY VEHICLE PREEMPTION SEQUENCE
US RTE 41 (SKOKIE HWY) AT IL RTE 21 (RIVERSIDE DR)

FAP RTE 348	SECTION 2011-042-TS	COUNTY LAKE	TOTAL SHEETS 62	SHEET NO. 43
CONTRACT # 60P49				ILLINOIS FED. AID PROJECT

GHA #4085.874