

F.A. RTE.	SECTION	COUNTY	TOTAL SHEETS	SHEET NO.
VAR	2011-044-DM	VARIOUS	22	1
		ILLINOIS	CONTRACT NO. 60P53	

STATE OF ILLINOIS
DEPARTMENT OF TRANSPORTATION
DIVISION OF HIGHWAYS

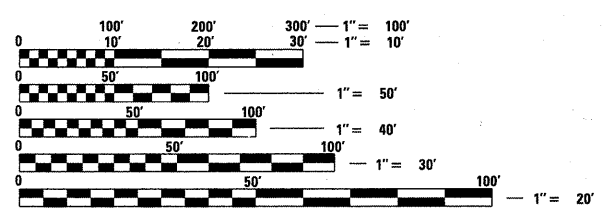
**PROPOSED
HIGHWAY PLANS**

ROUTE: VARIOUS LOCATIONS
SECTION 2011-044-DM
BUILDING DEMOLITION
VARIOUS COUNTIES

C-91-570-11

FOR INDEX OF SHEETS, SEE SHEET NO. 3

THE IMPROVEMENTS ARE LOCATED IN THE VILLAGES OF GLEN ELLYN, HAWTHORN WOODS AND IN THE CITY OF ELGIN.



FULL SIZE PLANS HAVE BEEN PREPARED USING STANDARD ENGINEERING SCALES. REDUCED SIZED PLANS WILL NOT CONFORM TO STANDARD SCALES. IN MAKING MEASUREMENTS ON REDUCED PLANS, THE ABOVE SCALES MAY BE USED.

J.U.L.I.E.
JOINT UTILITY LOCATION INFORMATION FOR EXCAVATION
1-800-892-0123
OR 811

PROJECT ENGINEER: KARI SMITH (847) 705-4437
PROJECT MANAGER: KEN ENG (847) 705-4247

CONTRACT NO. 60P53

FOR LOCATION MAPS, SEE SHEET NO. 2



STATE OF ILLINOIS
DEPARTMENT OF TRANSPORTATION
DIVISION OF HIGHWAYS

SUBMITTED MAY 31, 20 11

Diane M. O'Keefe *gc*
DEPUTY DIRECTOR OF HIGHWAYS, REGION ENGINEER

August 19 20 11
Scott E. Stettin *P.E. for*
acting ENGINEER OF DESIGN AND ENVIRONMENT

August 19 20 11
Christine M. Reed
DIRECTOR OF HIGHWAYS, CHIEF ENGINEER

PRINTED BY THE AUTHORITY
OF THE STATE OF ILLINOIS