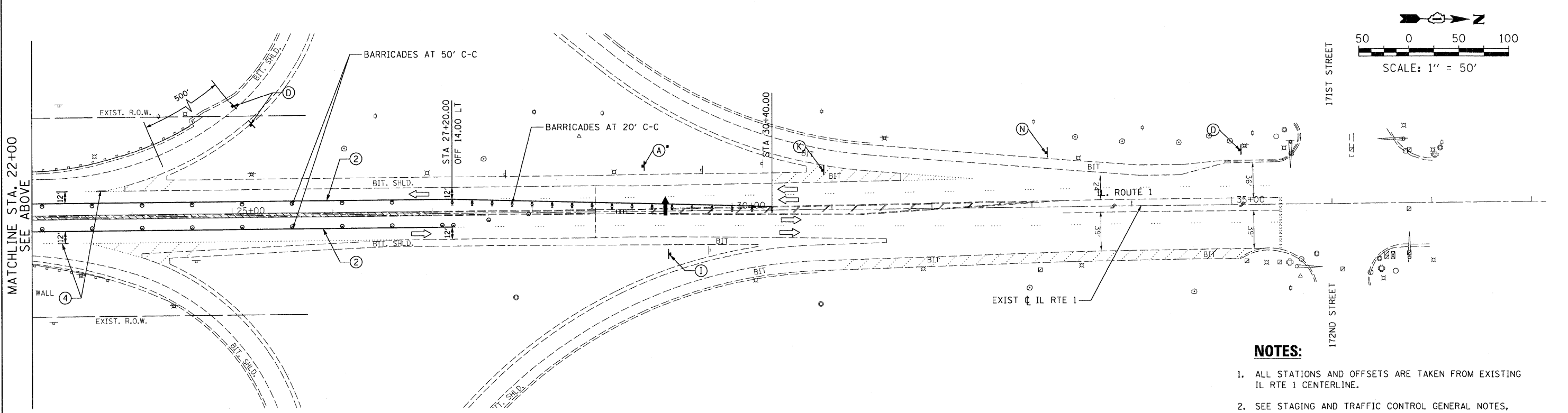
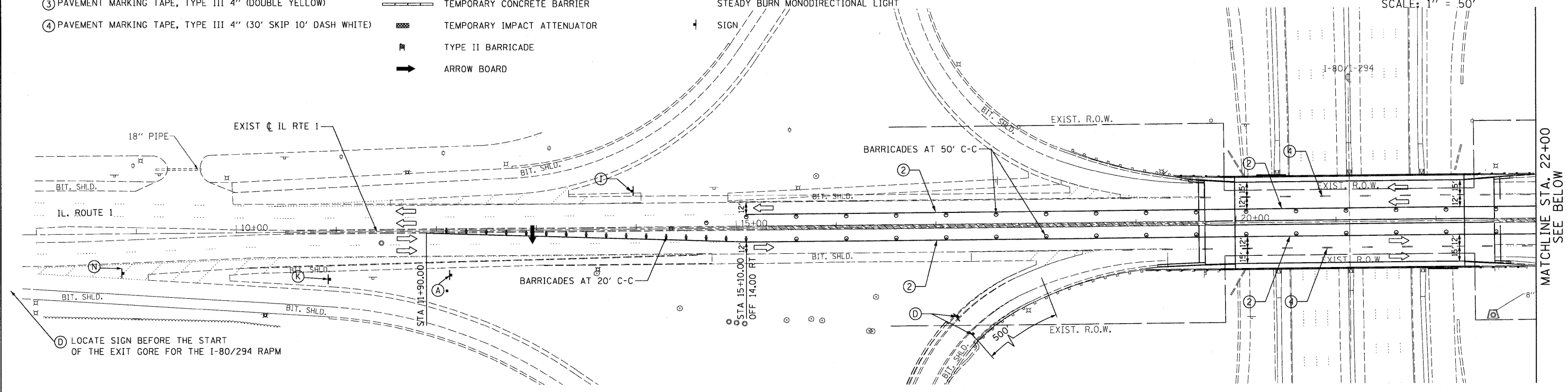
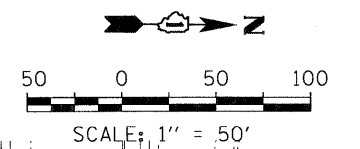


LEGEND:

- ① PAVEMENT MARKING TAPE, TYPE III 4" (SOLID WHITE)
- ② PAVEMENT MARKING TAPE, TYPE III 4" (SOLID YELLOW)
- ③ PAVEMENT MARKING TAPE, TYPE III 4" (DOUBLE YELLOW)
- ④ PAVEMENT MARKING TAPE, TYPE III 4" (30' SKIP 10' DASH WHITE)

- CONSTRUCTION ZONE
- TEMPORARY PAVEMENT
- TEMPORARY CONCRETE BARRIER
- TEMPORARY IMPACT ATTENUATOR
- TYPE II BARRICADE
- ARROW BOARD

- DRUM WITH STEADY BURN MONODIRECTIONAL LIGHT
- DIRECTION INDICATOR BARRICADE WITH STEADY BURN MONODIRECTIONAL LIGHT
- SIGN



- NOTES:**
1. ALL STATIONS AND OFFSETS ARE TAKEN FROM EXISTING IL RTE 1 CENTERLINE.
 2. SEE STAGING AND TRAFFIC CONTROL GENERAL NOTES, TYPICAL SECTIONS AND SIGN LEGEND SHEET FOR MORE SIGN INFORMATION.

• TO BE REMOVED WHENEVER NO WORKERS ARE PRESENT.

FILE NAME = 62099CMT04.dgn	USER NAME = halsted	DESIGNED - PK	REVISED -	STATE OF ILLINOIS DEPARTMENT OF TRANSPORTATION	ILLINOIS RTE 1 OVER TRI-STATE I-80 / I-294 STAGING AND TRAFFIC CONTROL PLAN (STAGE 3)	F.A.P. RTE. 876	SECTION 2001-001BR	COUNTY COOK	TOTAL SHEETS 62	SHEET NO. 15
	PLOT SCALE = 50.000' / IN.	CHECKED - RPI	REVISED -			SCALE: 1"=50'	SHEET NO. OF SHEETS	STA. TO STA.	FED. ROAD DIST. NO. 1 ILLINOIS FED. AID PROJECT	
PLOT DATE = 6/28/2011	DATE - 07/01/2011	REVISOR -	REVISOR -							