

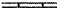
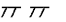


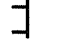

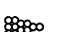
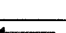

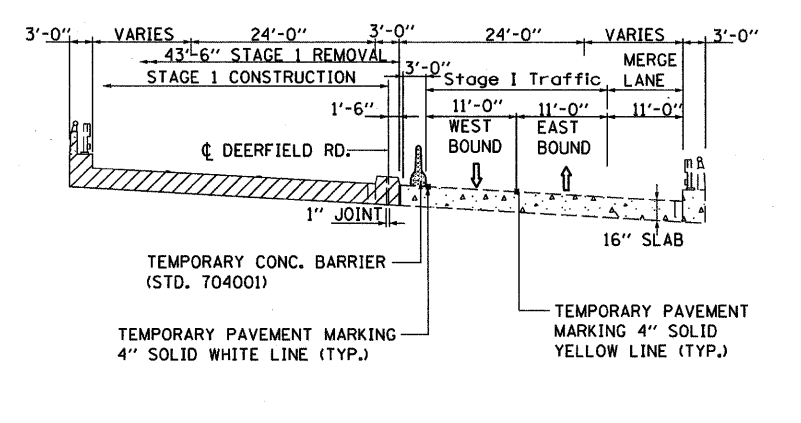
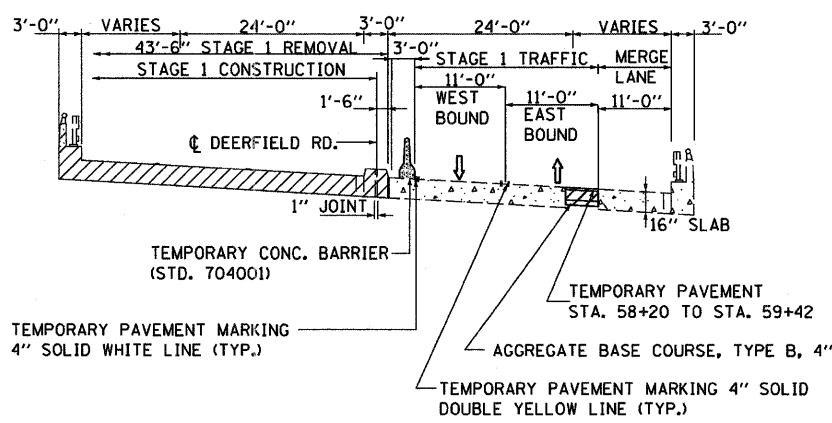
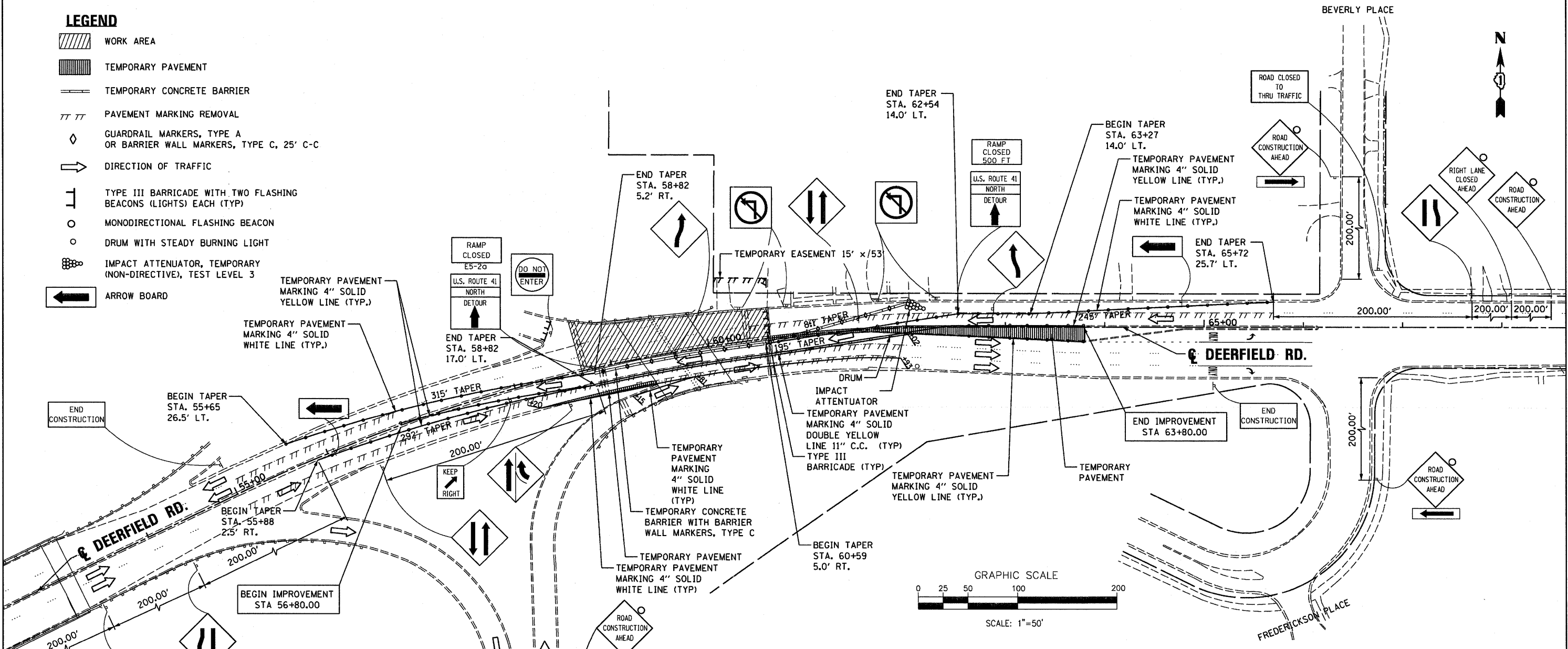


LEGEND

-  WORK AREA
-  TEMPORARY PAVEMENT
-  TEMPORARY CONCRETE BARRIER
-  PAVEMENT MARKING REMOVAL
-  GUARDRAIL MARKERS, TYPE A OR BARRIER WALL MARKERS, TYPE C, 25' C-C
-  DIRECTION OF TRAFFIC
-  TYPE III BARRICADE WITH TWO FLASHING BEACONS (LIGHTS) EACH (TYP)
-  MONODIRECTIONAL FLASHING BEACON
-  DRUM WITH STEADY BURNING LIGHT
-  IMPACT ATTENUATOR, TEMPORARY (NON-DIRECTIVE), TEST LEVEL 3
-  ARROW BOARD



FILE NAME =	DESIGNED - MC	REVISED -
...\\DI-62101-sht-MOT-stage1.dgn	DRAWN - MC	REVISED -
PLOT TIME = 9:48:42 AM	CHECKED - TRP	REVISED -
PLOT DATE = 6/23/2011	DATE - 06/24/2011	REVISED -

DESIGNED - MC	REVISED -
DRAWN - MC	REVISED -
CHECKED - TRP	REVISED -
DATE - 06/24/2011	REVISED -

SEPSTEIN
800 W. FULLERTON ST. CHICAGO, ILLINOIS 60611-1289
 TEL 312 454 8100 FAX 312 589 1217
 WWW.SEPSTEIN-IL.COM

**STATE OF ILLINOIS
DEPARTMENT OF TRANSPORTATION**

**SUGGESTED STAGES OF CONSTRUCTION
AND TRAFFIC CONTROL STAGE 1**

SCALE: 1" = 50'	SHEET NO. 3 OF 5 SHEETS	STA. 52+36.97 TO STA. 68+64.68
-----------------	-------------------------	--------------------------------

F.A.U. RTE.	SECTION	COUNTY	TOTAL SHEETS	SHEET NO.
1257	104RB-R	LAKE	54	10
CONTRACT NO. 62102				ILLINOIS FED. AID PROJECT