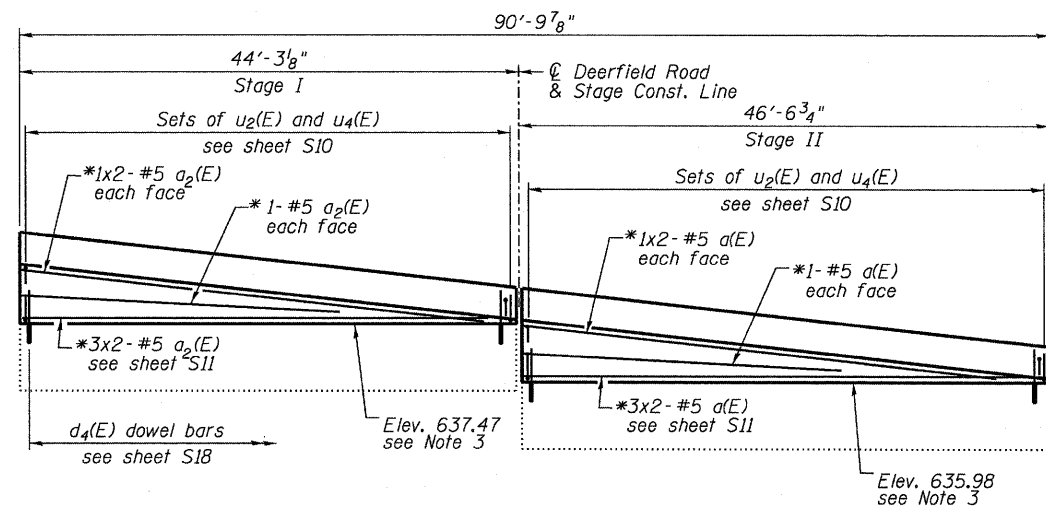
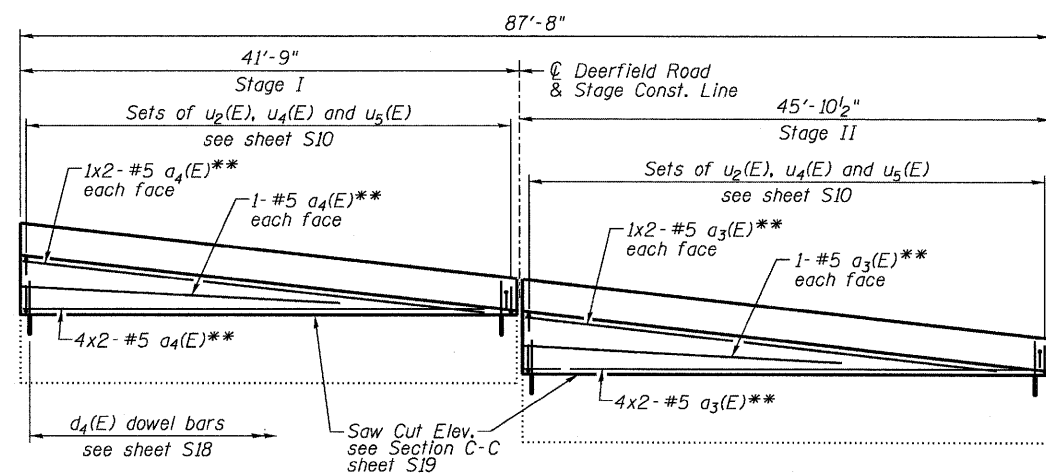


**SUPERSTRUCTURE
BILL OF MATERIAL**

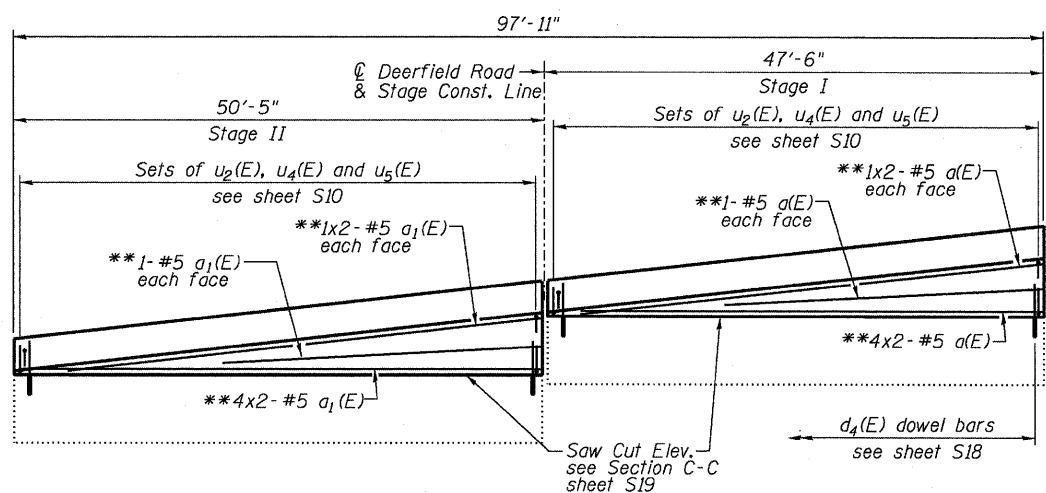
Bar	No.	Size	Length	Shape
a(E)	326	#5	25' - 3"	—
a ₁ (E)	298	#5	26' - 9"	—
a ₂ (E)	12	#5	23' - 7"	—
a ₃ (E)	14	#5	24' - 5"	—
a ₄ (E)	14	#5	22' - 4"	—
b(E)	88	#9	36' - 6"	—
b ₁ (E)	43	#9	12' - 3"	—
b ₂ (E)	126	#9	27' - 9"	—
b ₃ (E)	7	#9	31' - 2"	—
b ₅ (E)	3	#9	7' - 3"	—
b ₁₀ (E)	169	#9	11' - 9"	L
b ₁₁ (E)	84	#9	25' - 0"	—
b ₂₀ (E)	3	#8	13' - 0"	—
b ₂₁ (E)	2	#8	4' - 7"	—
b ₂₃ (E)	2	#8	22' - 9"	—
b ₂₈ (E)	3	#8	30' - 0"	—
b ₃₀ (E)	8	#9	12' - 0"	—
b ₃₁ (E)	8	#8	12' - 0"	—
b ₃₅ (E)	168	#8	29' - 10"	—
b ₃₆ (E)	166	#8	37' - 10"	—
b ₄₀ (E)	24	#10	31' - 2"	—
b ₄₁ (E)	12	#10	30' - 9"	—
b ₄₂ (E)	12	#10	29' - 3"	—
b ₄₃ (E)	12	#9	29' - 8"	—
b ₄₄ (E)	12	#9	28' - 1"	—
b ₄₅ (E)	24	#10	29' - 9"	—
d(E)	163	#5	5' - 7"	—
d ₁ (E)	163	#5	7' - 11"	—
d ₂ (E)	3	#6	4' - 9"	—
d ₃ (E)	5	#6	8' - 11"	—
e(E)	28	#4	18' - 6"	—
e ₁ (E)	14	#4	17' - 10"	—
e ₂ (E)	7	#4	14' - 3"	—
e ₃ (E)	7	#4	19' - 9"	—
e ₄ (E)	3	#8	28' - 8"	—
e ₅ (E)	3	#8	27' - 2"	—
e ₆ (E)	3	#4	26' - 6"	—
e ₇ (E)	3	#4	25' - 0"	—
v(E)	175	#5	3' - 9"	L
u(E)	163	#4	6' - 5"	—
u ₁ (E)	148	#4	8' - 0"	—
u ₂ (E)	184	#4	6' - 3"	—
u ₃ (E)	189	#4	6' - 4"	—
u ₄ (E)	373	#4	3' - 9"	—
u ₅ (E)	189	#4	4' - 7"	—
Floor Drain	Each		4	
Concrete Superstructure	Cu. Yd.		409	
Bridge Deck Grooving	Sq. Yd.		591	
Protective Coat	Sq. Yd.		716	
Reinforcement Bars, Epoxy Coated	Pound		109,020	



SECTION E-E
(Length measured along West Face of Pier)

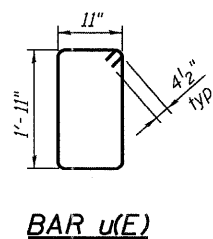


SECTION F-F
(Length measured along front face of Abutment)

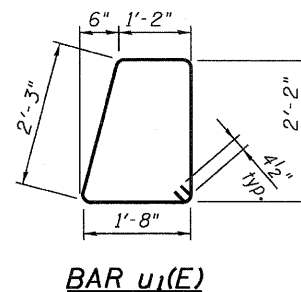


SECTION G-G
(Length measured along front face of Abutment)

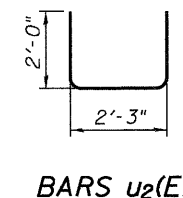
* see Section C-C sheet S11



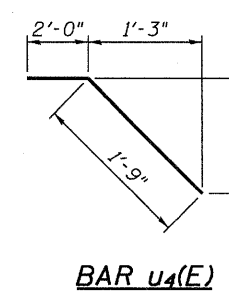
BAR u(E)



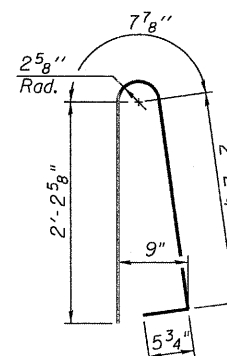
BAR u1(E)



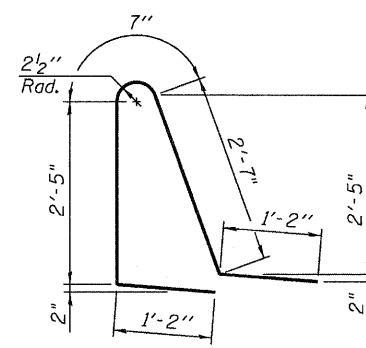
BARS u2(E)



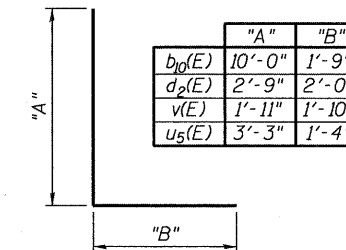
BAR u4(E)



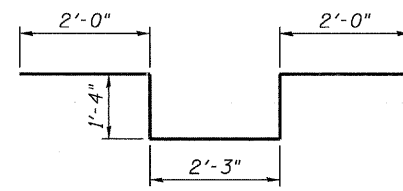
BAR d(E)



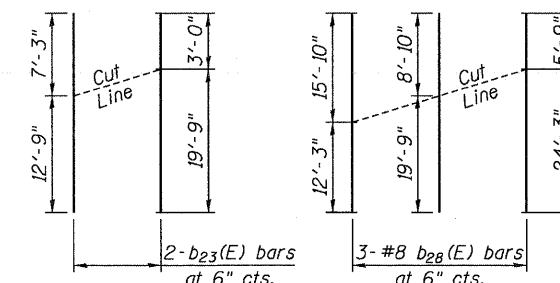
BAR d1(E)



**BARS b₁(E), d₂(E),
v(E) AND u₅(E)**

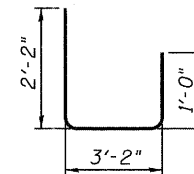


BAR d3(E)



FIELD CUTTING DIAGRAM

Order b₂₃(E) and b₂₈(E) bars full length.
Cut as shown and place at 6" cts.



BARS u3(E)

MINIMUM BAR LAP

#5 bar = 2'-10"

** see Section D-D sheet S11

Notes:

1. Work this sheet with sheets S9 thru S12.
2. For location of Sections E-E thru G-G see sheets S9 and S10.
3. Elevations are taken from the existing plans and shown for information only. The Contractor shall verify in field before beginning construction.

6/23/2011 2:46:00 PM P:\Projects\1000\10273\CAD\CADD Sheets\Structural\0490088-013-SuperDetails3.dgn

FILE NAME = ...\0490088-013-SuperDetails3.dgn
PLOT TIME = 2:46:00 PM
PLOT DATE = 6/23/2011

DESIGNED EV
DRAWN EV
CHECKED PC
DATE 06 24 2011

REVISED -
REVISED -
REVISED -
REVISED -

SEPSTEIN
800 WEST FULLTON STREET
CHICAGO, ILLINOIS 60611-1259
TEL 312 454 9100
FAX 312 558 1217
WWW.SEPSTEIN.COM

**STATE OF ILLINOIS
DEPARTMENT OF TRANSPORTATION**

**SUPERSTRUCTURE DETAILS 3
STRUCTURE NO. 049-0088**
SHEET NO. S13 OF S22 SHEETS

F.A.U. RTE.	SECTION	COUNTY	TOTAL SHEETS	SHEET NO.
1257	104RB-R	LAKE	54	32
				CONTRACT NO. 62102
ILLINOIS FED. AID PROJECT				