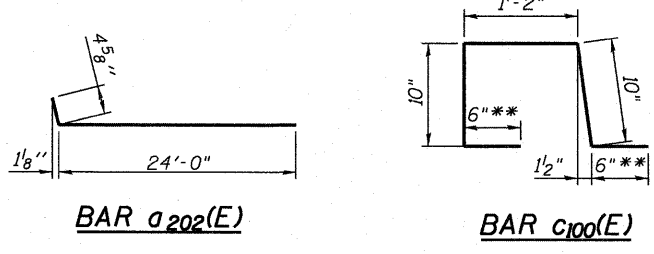
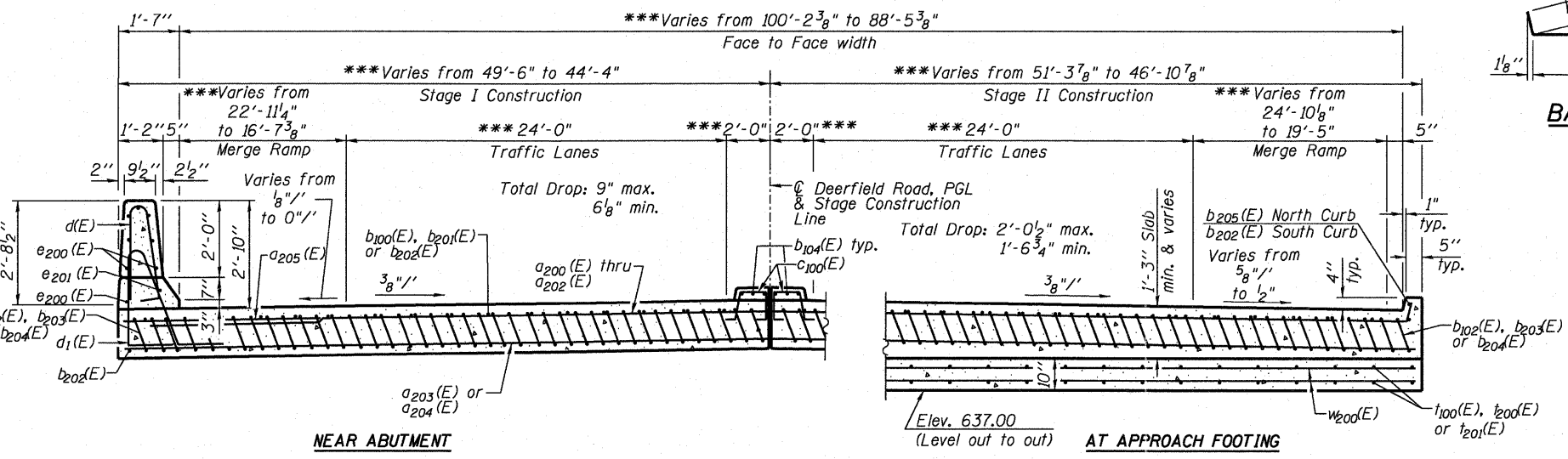
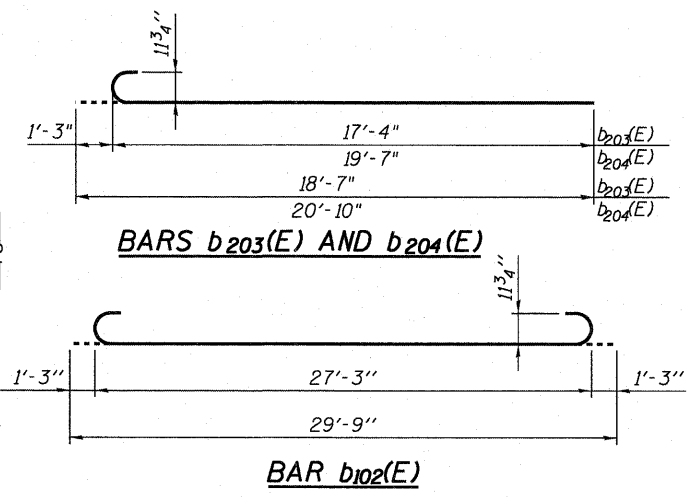
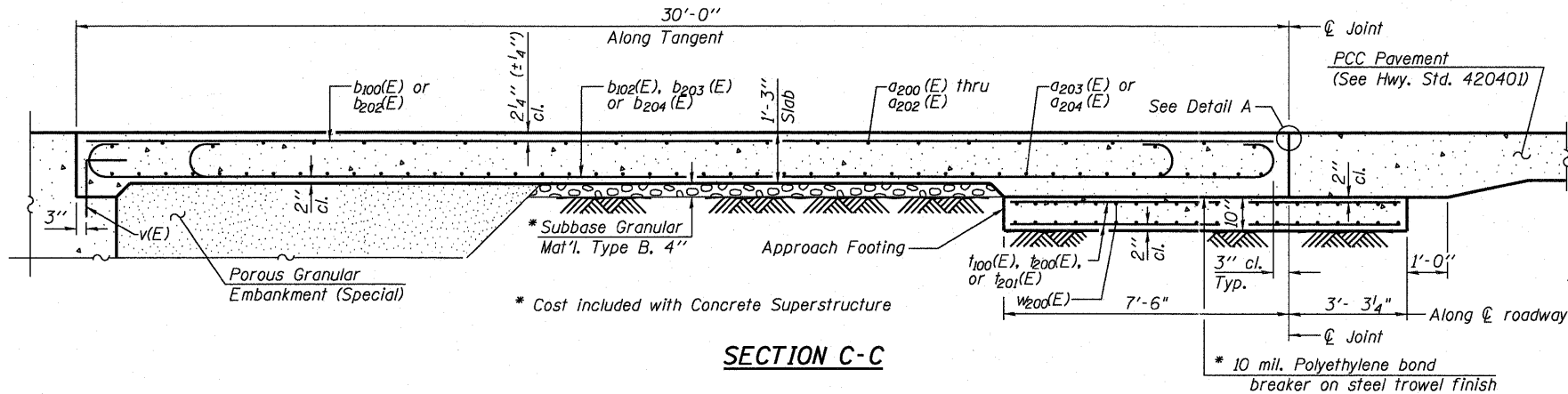
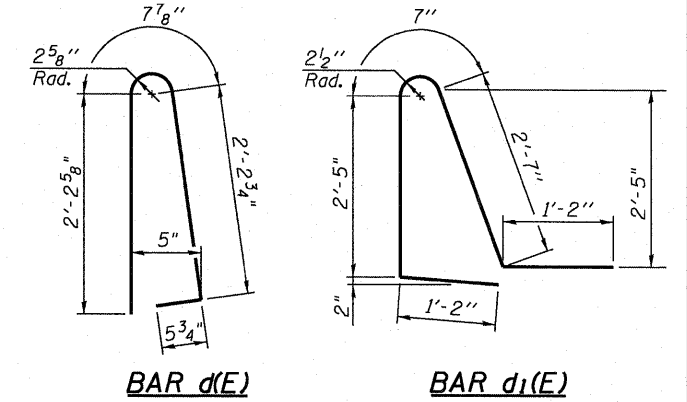
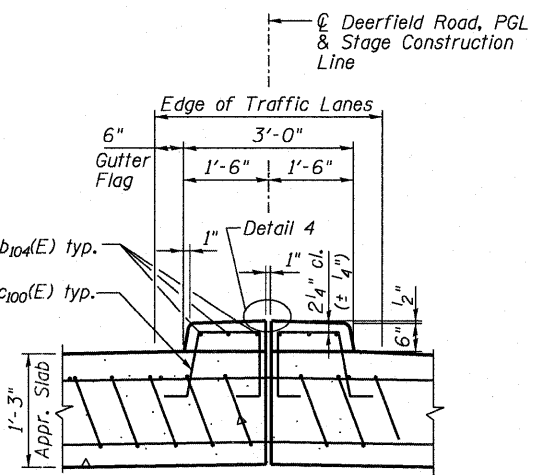
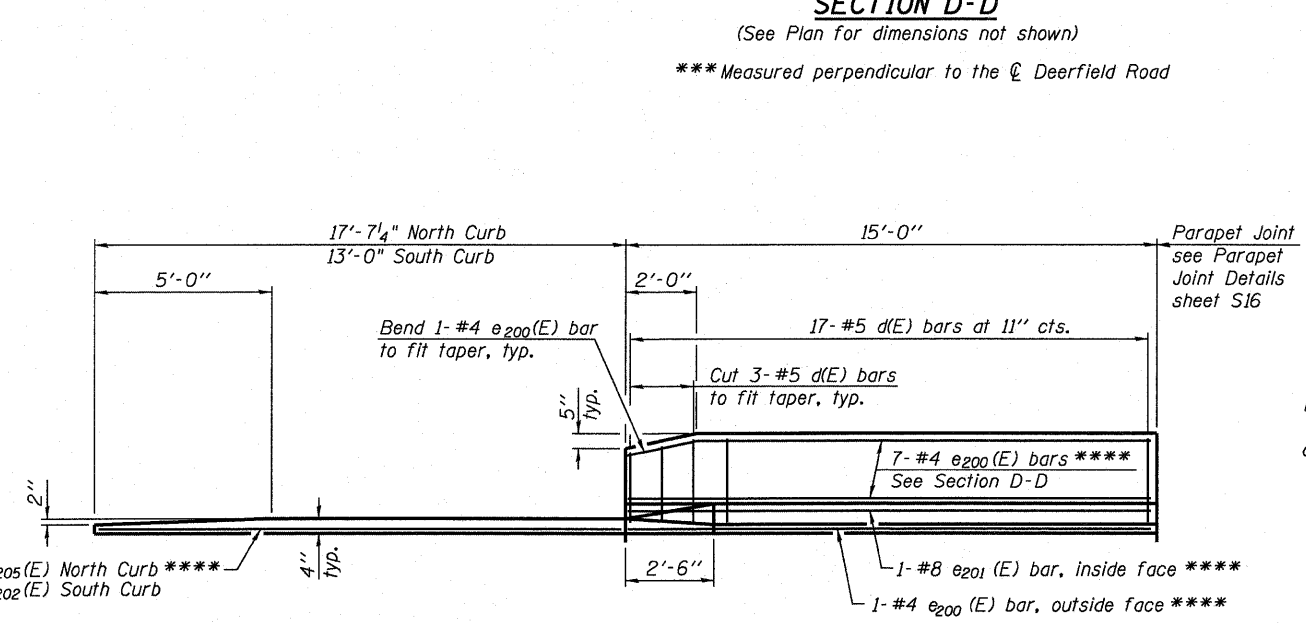


**WEST APPROACH SLAB  
BILL OF MATERIAL**

Bar	No.	Size	Length	Shape
a <sub>200</sub> (E)	25	#4	28' - 8"	—
a <sub>201</sub> (E)	25	#4	30' - 3"	—
a <sub>202</sub> (E)	50	#4	24' - 5"	—
a <sub>203</sub> (E)	92	#5	26' - 8"	—
a <sub>204</sub> (E)	92	#5	27' - 6"	—
a <sub>205</sub> (E)	24	#6	6' - 6"	—
a <sub>206</sub> (E)	24	#5	4' - 6"	—
b <sub>100</sub> (E)	74	#4	29' - 8"	—
b <sub>102</sub> (E)	217	#9	29' - 9"	—
b <sub>104</sub> (E)	6	#5	29' - 8"	—
b <sub>202</sub> (E)	27	#4	17' - 5"	—
b <sub>203</sub> (E)	28	#9	18' - 7"	—
b <sub>204</sub> (E)	38	#9	20' - 10"	—
b <sub>205</sub> (E)	1	#4	17' - 9"	—
c <sub>100</sub> (E)	62	#5	3' - 10"	—
d(E)	34	#5	5' - 7"	—
d <sub>1</sub> (E)	34	#5	7' - 11"	—
e <sub>200</sub> (E)	16	#4	15' - 1"	—
e <sub>201</sub> (E)	2	#8	15' - 1"	—
t <sub>100</sub> (E)	202	#4	10' - 6"	—
t <sub>200</sub> (E)	10	#4	9' - 7"	—
t <sub>201</sub> (E)	10	#4	11' - 0"	—
w <sub>200</sub> (E)	168	#5	27' - 0"	—
Concrete Structures		Cu. Yd.	34	
Concrete Superstructure		Cu. Yd.	137	
Bridge Deck Grooving		Sq. Yd.	285	
Protective Coat		Sq. Yd.	328	
Reinforcement Bars, Epoxy Coated		Pound	42,990	



\*\*In lieu of bottom leg, c(E) bars may be cored and set according to Article 509.06 of Standard Specifications. Cored holes shall be roughened or scored per manufacturer's recommendations. Maximum depth of cored hole shall not exceed 6".



- Notes:
1. For Detail A see sheet S16.
  2. For location of Sections C-C, D-D, G-G and view E-E see sheet S14.
  3. Approach slab and parapet concrete shall be paid for as Concrete Superstructure.
  4. Approach footing concrete shall be paid for as Concrete Structures.
  5. Reinforcement shall be paid for as Reinforcement Bars, Epoxy Coated.
  6. The approach footing maximum applied service bearing pressure (Q<sub>max</sub>) = 2.0 ksf.
  7. Cost of excavation for approach footing included with Concrete Structures.
  8. For Porous Granular Embankment (Special) and drainage treatment details, see sheet S18.
  9. For v(E) bar details see sheet S9.
  10. For Detail 4 see sheet S11.

8/9/2011 4:41:55 PM P:\Projects\100010273\CAD\CADD Sheets\Structural\0490088-015-WApprSlab2.dgn

FILE NAME =	DESIGNED EV	REVISED -	<p>800 WEST FULTON STREET CHICAGO, ILLINOIS 60611-2208 TEL 312 454 9100 FAX 312 558 1217 WWW.sepstein.com</p>	<p>STATE OF ILLINOIS DEPARTMENT OF TRANSPORTATION</p>	<p>WEST BRIDGE APPROACH SLAB DETAILS STRUCTURE NO. 049-0088</p>	F.A.U. RTE.	SECTION	COUNTY	TOTAL SHEETS	SHEET NO.
... \0490088-015-WApprSlab2.dgn	DRAWN EV	REVISED -				1257	104RB-R	LAKE	54	34
PLOT TIME = 4:41:55 PM	CHECKED PC	REVISED -				CONTRACT NO. 62102				
PLOT DATE = 8/9/2011	DATE 08 09 2011	REVISED -				ILLINOIS FED. AID PROJECT				
SHEET NO. S15 OF S22 SHEETS										