

O.R. RTE.	SECTION	COUNTY	TOTAL SHEETS	SHEET NO.
213	0102B-1	COOK	54	1
FED. ROAD DIST. NO.		ILLINOIS	CONTRACT NO. 62390	

D-91-052-02

PROJECT LOCATED IN THE VILLAGE OF PALOS PARK

FOR INDEX OF SHEETS, SEE SHEET NO. 2

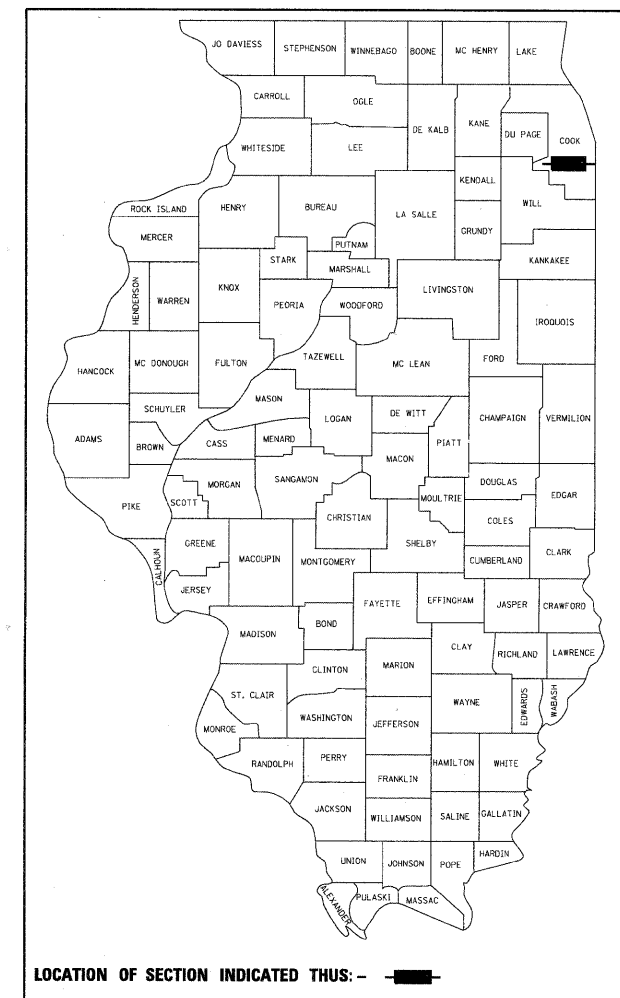
DESIGN DESIGNATION
1800(20) LOCAL ROAD URBAN 0.02 (FP-20)

ADT 1,300 (2010)
ADT 1920 (2021)
POSTED SPEED LIMIT 35 MPH
DESIGN SPEED LIMIT 35 MPH

**STATE OF ILLINOIS
DEPARTMENT OF TRANSPORTATION
DIVISION OF HIGHWAYS**

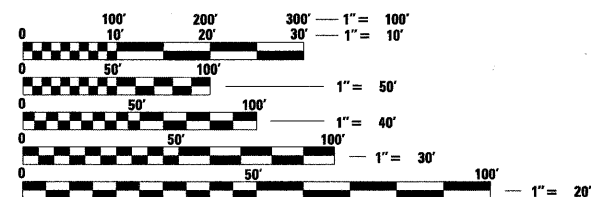
**PROPOSED
HIGHWAY PLANS**

**OR 213 /119TH STREET
OVER MILL CREEK
SECTION: 0102B-1
BRIDGE REPLACEMENT
COOK COUNTY
C-91-052-02**



PROJECT SCOPE OF WORK

SCOPE OF WORK INCLUDES THE REMOVAL AND REPLACEMENT OF THE EXISTING BRIDGE STRUCTURE SN 016-0921 WITH A NEW BRIDGE (SN 016-2831), APPROACH ROADWAY RECONSTRUCTION AND RESURFACING.



FULL SIZE PLANS HAVE BEEN PREPARED USING STANDARD ENGINEERING SCALES. REDUCED SIZED PLANS WILL NOT CONFORM TO STANDARD SCALES. IN MAKING MEASUREMENTS ON REDUCED PLANS, THE ABOVE SCALES MAY BE USED.

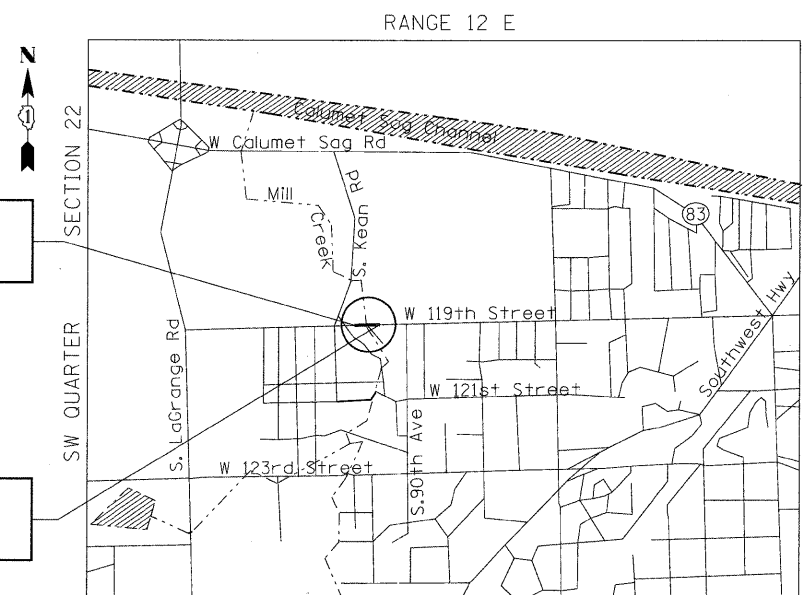
J.U.L.I.E.
JOINT UTILITY LOCATION INFORMATION FOR EXCAVATION
1-800-892-0123
OR 811

PROJECT MANAGER: BRIAN KUTTAB (847) 705-4431
PROJECT ENGINEER: RON ZENAROSA (847) 705-4212

CONTRACT NO. 62390

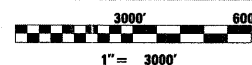
PROJECT BEGINS
STA. 17+53.36

PROJECT ENDS
STA. 22+39.64



PALOS & LYONS TOWNSHIP

LOCATION MAP



NET AND GROSS LENGTH OF PROJECT = 486.28' = 0.092 MI

**STATE OF ILLINOIS
DEPARTMENT OF TRANSPORTATION
DIVISION OF HIGHWAYS**

SUBMITTED MAY 5, 20 11

Diana M. O'Keefe
DEPUTY DIRECTOR OF HIGHWAYS, REGION ENGINEER

August 19 20 11
Scott E. Stitt, P.E.
ENGINEER OF DESIGN AND ENVIRONMENT

August 19 20 11
Christina M. Reed
DIRECTOR OF HIGHWAYS, CHIEF ENGINEER

**PRINTED BY THE AUTHORITY
OF THE STATE OF ILLINOIS**

LONGO, INC.
CONSULTING ENGINEERS
1560 WALL ST., SUITE 222
NAPERVILLE, ILLINOIS 60563 PH: 630/577-9100

Professional Engineer seals for Scott E. Stitt and Christina M. Reed, both registered in Illinois.