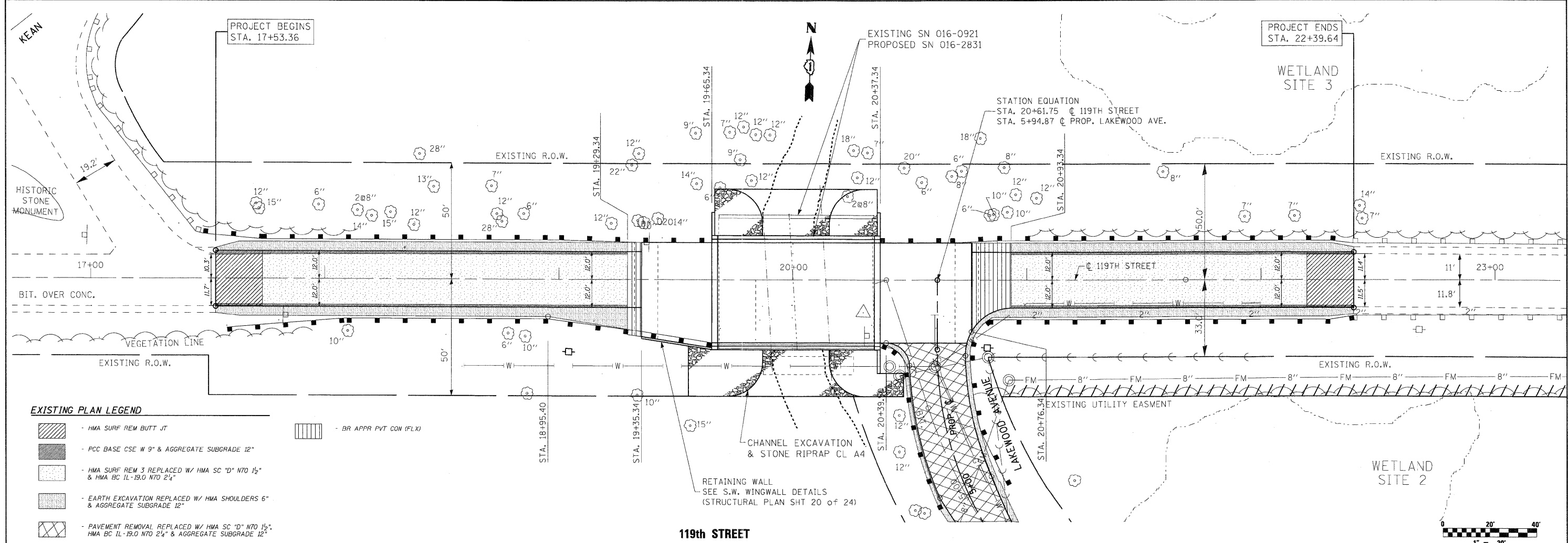
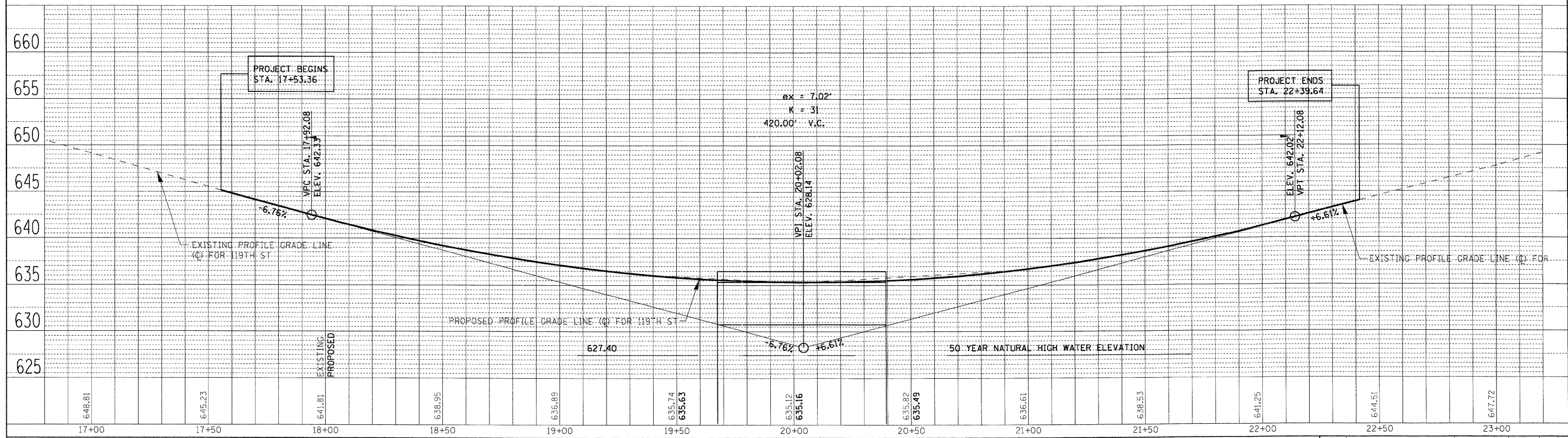


DATE	
BY	
DATE	
BY	
DATE	
BY	
DATE	
BY	
DATE	
BY	

DATE	
BY	
DATE	
BY	
DATE	
BY	
DATE	
BY	
DATE	
BY	



- EXISTING PLAN LEGEND**
- HMA SURF REM BUTT JT
 - PCC BASE CSE W 9" & AGGREGATE SUBGRADE 12"
 - HMA SURF REM 3 REPLACED W/ HMA SC "D" N70 1 1/2" & HMA BC IL-19.0 N70 2 1/4"
 - EARTH EXCAVATION REPLACED W/ HMA SHOULDERS 6" & AGGREGATE SUBGRADE 12"
 - PAVEMENT REMOVAL REPLACED W/ HMA SC "D" N70 1 1/2" HMA BC IL-19.0 N70 2 1/4" & AGGREGATE SUBGRADE 12"
 - BR APPR PVT CON (FLX)



LONCO, INC.
CONSULTING ENGINEERS
1560 WALL ST, SUITE 222
NAPERVILLE, ILLINOIS 60563 PH (630) 577-9100

DESIGNED -	WJY	REVISED -	
DRAWN -	ST, TSC	REVISED -	
CHECKED -	WJY, SLV	REVISED -	
DATE -	07/01/2011	REVISED -	

**STATE OF ILLINOIS
DEPARTMENT OF TRANSPORTATION**

**PLAN AND PROFILE 119TH STREET
119TH STREET OVER MILL CREEK**

SCALE: NONE SHEET NO. 1 OF 2 SHEETS STA. 17+53.36 TO STA. 22+39.64

O.R. RTE.	SECTION	COUNTY	TOTAL SHEETS	SHEET NO.
213	0102B-1	COOK	54	9
D-91-052-02		CONTRACT NO. 62390		
FED. ROAD DIST. NO. ILLINOIS FED. AID PROJECT				