

F.A.P. RTE.	SECTION	COUNTY	TOTAL SHEETS	SHEET NO.
332	0101.1 BR-3	COOK	60	1
		ILLINOIS	CONTRACT NO. 62421	

STATE OF ILLINOIS
DEPARTMENT OF TRANSPORTATION
DIVISION OF HIGHWAYS

**PROPOSED
HIGHWAY PLANS**

F.A.P. ROUTE 332 (IL ROUTE 394)
AT JOE ORR ROAD
SECTION 0101.1 BR-3
SUPERSTRUCTURE REPLACEMENT
COOK COUNTY

C-91-130-02

FOR INDEX OF SHEETS, SEE SHEET NO. 2

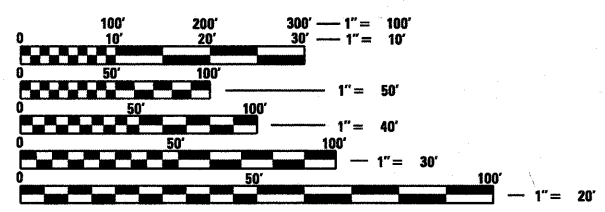
TRAFFIC DATA

F.A.P. 332	F.A.U. 1631
IL ROUTE 394	JOE ORR ROAD
EXISTING ADT: 53,000	EXISTING ADT: 7,700
DESIGN ADT: 62,000	DESIGN ADT: 12,500
SPEED LIMIT: 55 MPH	SPEED LIMIT: 45 MPH
DESIGN DESIGNATION: INTERSTATE	

DESIGN DESIGNATION
JOE ORR ROAD
Minor Arterial (Urban)

PROJECT LOCATED IN THE VILLAGE OF LYNWOOD
IN COOK COUNTY

PROJECT DESCRIPTION:
PROJECT INCLUDES REMOVAL AND REPLACEMENT OF SUPERSTRUCTURE JOE ORR ROAD BRIDGE OVER IL ROUTE 394 IN THE VILLAGE OF LYNWOOD, COOK COUNTY, STRUCTURE NO. 016-2121. PROJECT INCLUDES EARTH WORK, DRAINAGE, PAVEMENT REMOVAL AND REPLACEMENT, NEW GUARDRAIL AND MODIFICATIONS TO SUBSTRUCTURE NECESSARY TO INCREASE JOE ORR ROADWAY PROFILE.

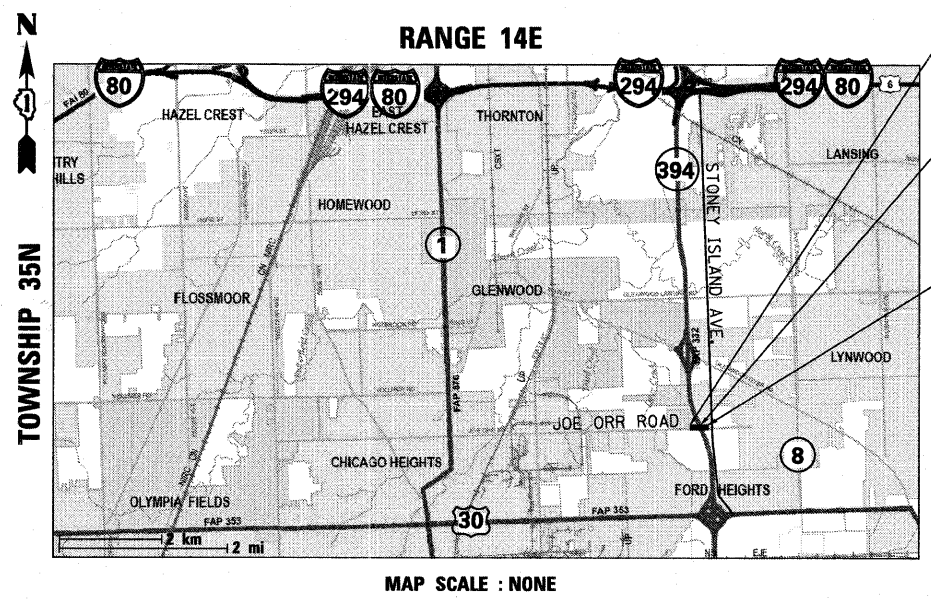


FULL SIZE PLANS HAVE BEEN PREPARED USING STANDARD ENGINEERING SCALES. REDUCED SIZED PLANS WILL NOT CONFORM TO STANDARD SCALES. IN MAKING MEASUREMENTS ON REDUCED PLANS, THE ABOVE SCALES MAY BE USED.

J.U.L.I.E.
JOINT UTILITY LOCATION INFORMATION FOR EXCAVATION
1-800-892-0123
OR 811

PROJECT MANAGER BRIAN KUTTAB (847) 705-4431

CONTRACT NO. 62421



MAP SCALE : NONE

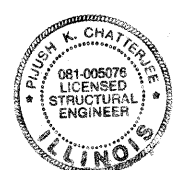
IMPROVEMENT BEGINS
STA. 1+82.79

STA. 5+97.57
REMOVE EXISTING 225.5 FT
FOUR SPAN SUPERSTRUCTURE
STRUCTURE NO. 016-2121

IMPROVEMENT ENDS
STA. 9+69.13

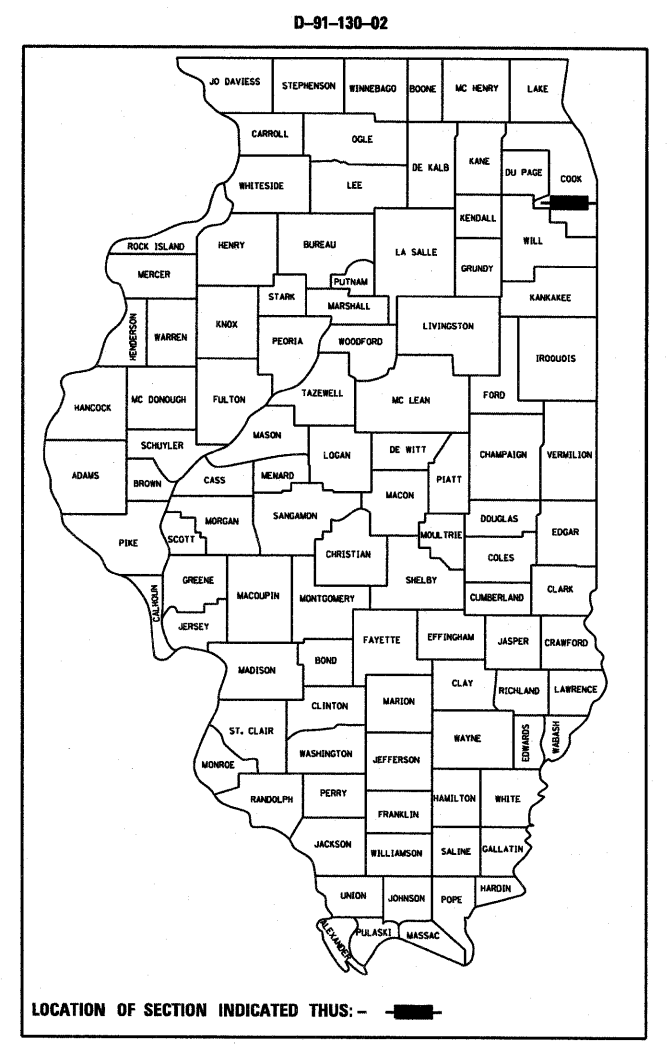


Theresa R. Pelletier
Expires 11/30/11



Pijush K. Chatterjee
Expires 11/30/2012

GROSS LENGTH = 786.34 FT. = 0.149 MILE
NET LENGTH = 786.34 FT. = 0.149 MILE



STATE OF ILLINOIS
DEPARTMENT OF TRANSPORTATION
DIVISION OF HIGHWAYS

SUBMITTED JUNE 8, 20 11

Diana M. O'Keefe
DEPUTY DIRECTOR OF HIGHWAYS, REGION ENGINEER

August 19, 20 11
Scott E. Stitt P.E.
Acting ENGINEER OF DESIGN AND ENVIRONMENT

August 19, 20 11
Christine M. Reed
DIRECTOR OF HIGHWAYS, CHIEF ENGINEER

PRINTED BY THE AUTHORITY
OF THE STATE OF ILLINOIS

EPSTEIN

600 WEST FULTON STREET
CHICAGO, ILLINOIS
60661-1259

TEL 312 454 9100
FAX 312 559 1217
WEB www.epsteinglobal.com