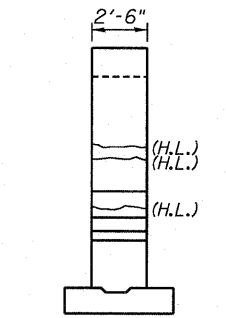
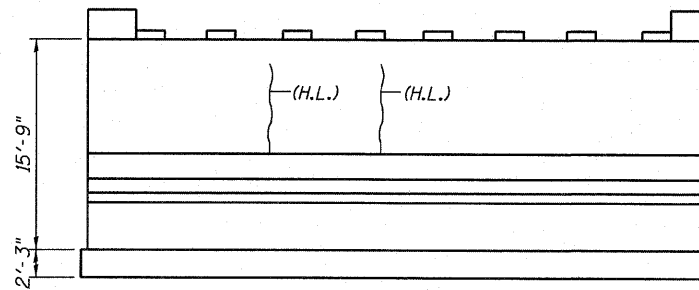


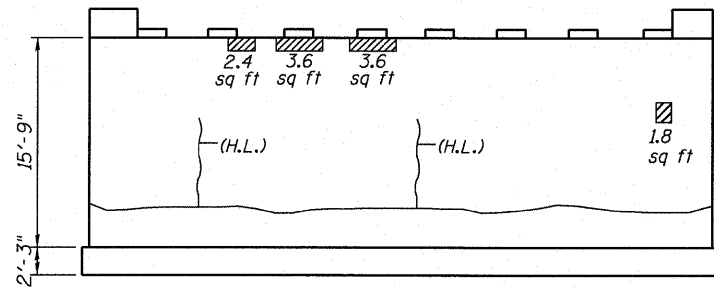
PIER 1 ELEVATION
(East Face)



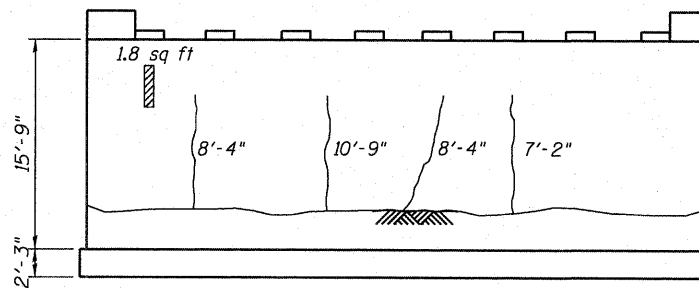
AT SOUTH END



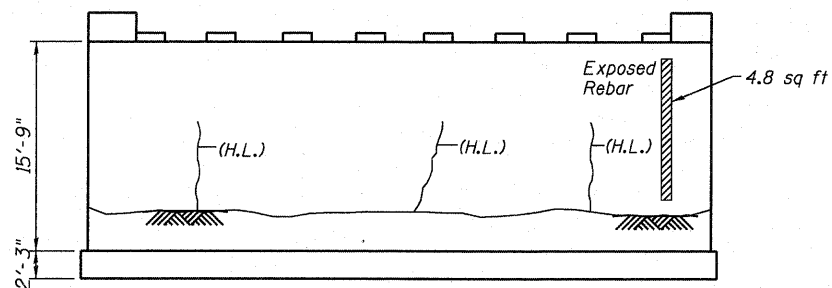
PIER 3 ELEVATION
(West Face)



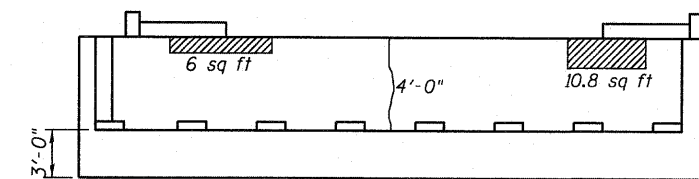
PIER 1 ELEVATION
(West Face)



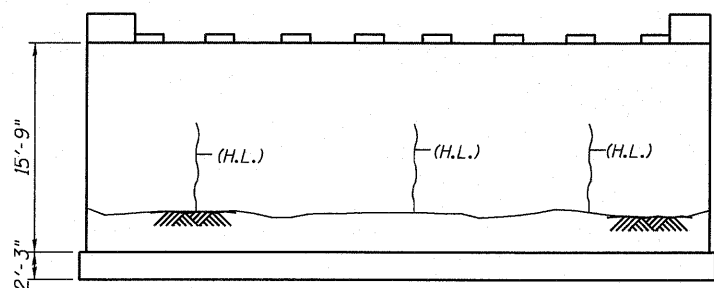
PIER 3 ELEVATION
(East Face)



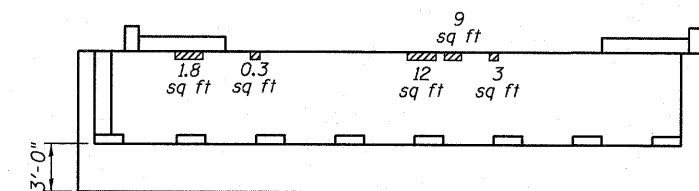
PIER 2 ELEVATION
(East Face)



EAST ABUTMENT ELEVATION



PIER 2 ELEVATION
(West Face)



WEST ABUTMENT ELEVATION

LEGEND

- Structural Repair of Concrete (depth equal to or less than 5 inches)
- 1'-0" Epoxy Crack Injection
- (H.L.) Hairline crack (not to be sealed)

BILL OF MATERIALS

Item	Unit	Total
Epoxy Crack Injection	Foot	61
Structural Repair of Concrete (depth equal to or less than 5 inches)	Sq Ft	101

Note

The cracks and spall areas of the existing substructure shown on this plan are for general reference only. They have been taken from the bridge condition report and they are not guaranteed. The contractor shall take all field measurements of the cracks and spall areas necessary to assure proper repair for the substructure and shall assure full responsibility for the repair work.

FILE NAME =	DESIGNED <i>EV</i>	REVISED -
...N0162121-026-ExistingSubstructureConditions	DRAWN <i>JCP</i>	REVISED -
PLOT TIME = 10:36:18 AM	CHECKED <i>PC</i>	REVISED -
PLOT DATE = 6/30/2011	DATE <i>07 01 2011</i>	REVISED -

SEPSTEIN
800 WEST FULTON STREET
CHICAGO, ILLINOIS 60601-1209
TEL 312 454 9100
FAX 312 558 1217
WEB www.sepsteingroup.com

STATE OF ILLINOIS
DEPARTMENT OF TRANSPORTATION

EXISTING SUBSTRUCTURE REPAIRS
STRUCTURE NO. 016-2121
SHEET NO. S26 OF S29 SHEETS

F.A.P. RTE.	SECTION	COUNTY	TOTAL SHEETS	SHEET NO.
332	0101.1 BR-3	COOK	60	41
			CONTRACT NO. 62421	
ILLINOIS FED. AID PROJECT				