

ROUTE MARKERS

FOR U.S. ROUTES
MI-40-2424

FOR ILLINOIS ROUTES
MI-50-2424

R.R. UNMARKED ROUTES
SPECIAL 24" x 18" VARIABLE
4" BLACK LETTERS ON WHITE
REFLECTIVE BACKGROUND

ARROWS SIGNS

M5-1L-2115

M5-1R-2115

M6-1-2115

M6-1-2115

M6-3-2115

CARDINAL DIRECTION & DETOUR SIGNS

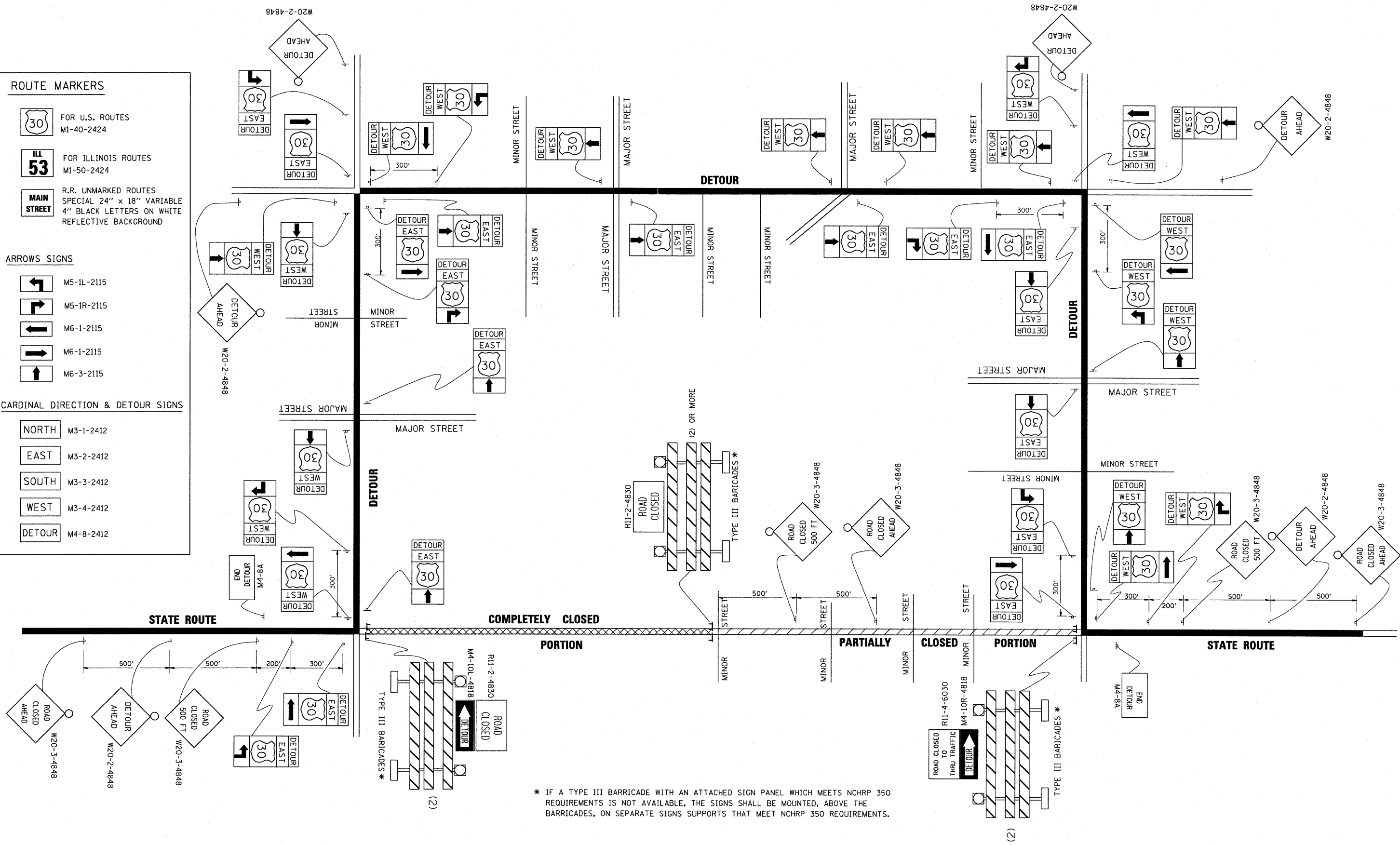
NORTH M3-1-2412

EAST M3-2-2412

SOUTH M3-3-2412

WEST M3-4-2412

DETOUR M4-8-2412



* IF A TYPE III BARRICADE WITH AN ATTACHED SIGN PANEL WHICH MEETS NCHRP 350 REQUIREMENTS IS NOT AVAILABLE, THE SIGNS SHALL BE MOUNTED, ABOVE THE BARRICADES, ON SEPARATE SIGNS SUPPORTS THAT MEET NCHRP 350 REQUIREMENTS.

FILE NAME =
c:\pwork\p10101\DRIVAKOSGN\0108315\21.dgn

USER NAME = drivakosgn
PLOT SCALE = 49.9999 / IN.
PLOT DATE = 9/14/2009

DESIGNED -
DRAWN -
CHECKED -
DATE -

REVISED - 10-18-02
REVISED - R. BORO 09-14-09
REVISED -
REVISED -

**STATE OF ILLINOIS
DEPARTMENT OF TRANSPORTATION**

**DETOUR SIGNING
FOR CLOSING STATE HIGHWAYS**

SCALE: NONE SHEET NO. 1 OF 1 SHEETS STA. TO STA.

F.A.P. RTE.	SECTION	COUNTY	TOTAL SHEETS	SHEET NO.
332	0101.1 BR-3	COOK	60	59
TC-21		CONTRACT NO. 62421		
FED. ROAD DIST. NO. 1 ILLINOIS FED. AID PROJECT				