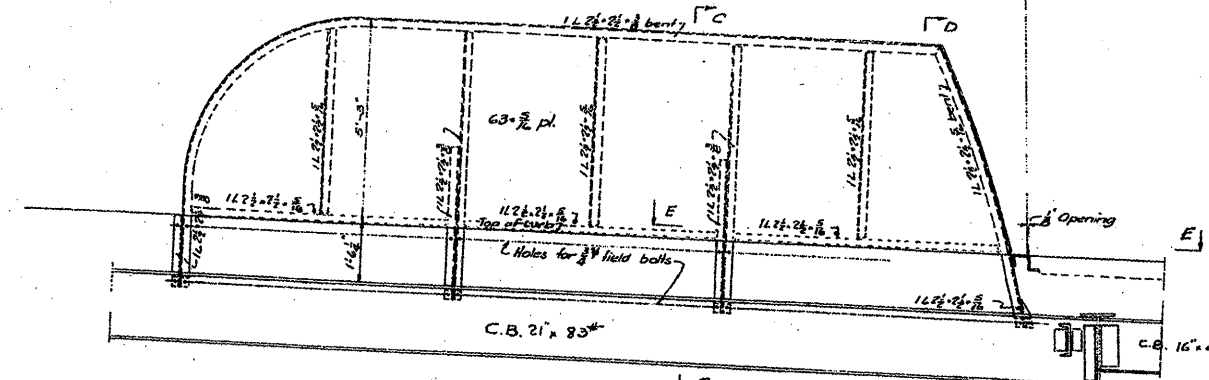
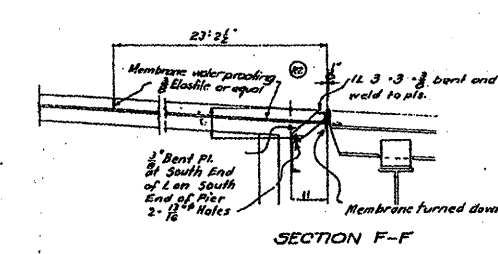


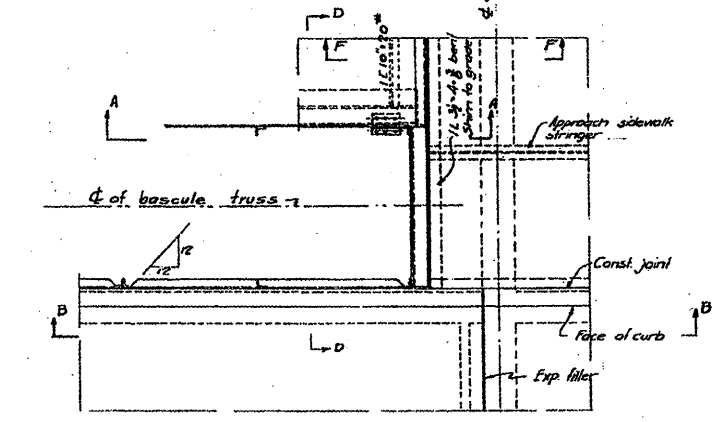
SECTION A-A



SECTION B-B

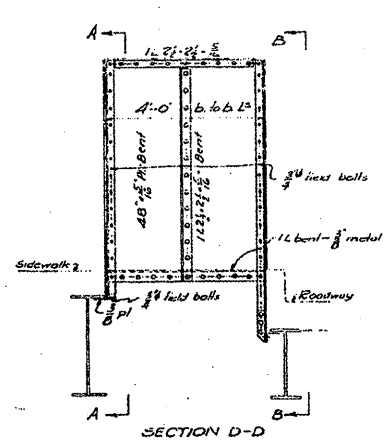


SECTION F-F

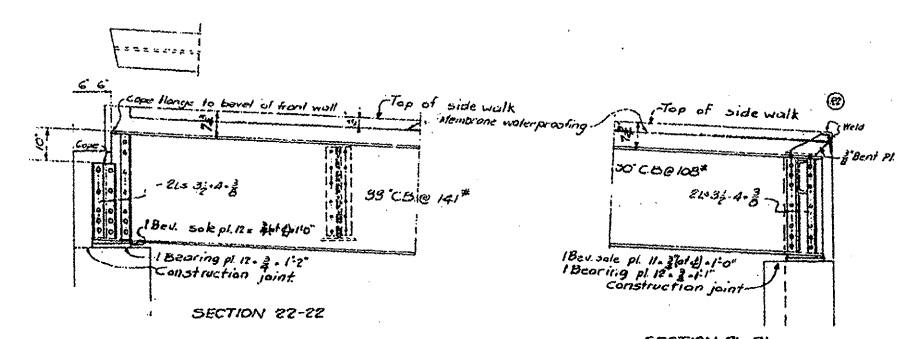


SECTION E-E, East Side

GUARD AT REAR END OF EAST BASCULE TRUSSES
Guard at rear end of west bascule trusses similar

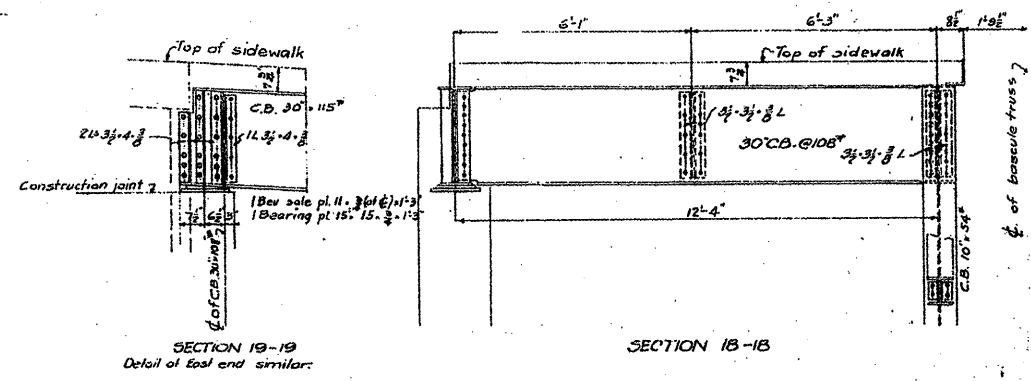


SECTION D-D



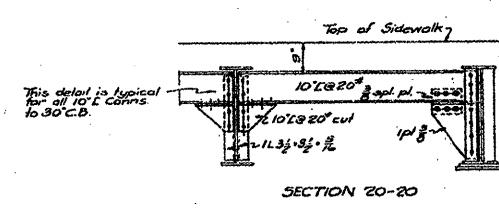
SECTION 22-22

SECTION 21-21



SECTION 19-19
Detail of east end similar

SECTION 18-18



SECTION 20-20

SIDEWALK STRINGER DETAILS - For location of sections see Sheets #6 and #12

General Notes:
Rivets 3/4"
Open holes 1 1/2"

REVISIONS	DATE	INITIALS
R2	12-26-34	R.L.D.
Revised 2' diam. Exp. L in Sections A-F & B1-31		

FOR INFORMATION ONLY

SIDEWALK STRINGERS
GUARD AT REAR END OF TRUSSES
DOUBLE LEAF TRUNNION BASCULE BRIDGE
OVER
THE ILLINOIS WATERWAY
AT
RUBY ST. JOLIET, ILL.

DESIGNED BY
THE SCHERZER ROLLING LIFT BRIDGE CO.,
MONADNOCK BLOCK, CHICAGO, ILL.

DRAWN BY A.L.R.
TRACED BY A.L.R.S.
CHECKED BY P.T.S.
SCALE: 1/2" = 1'-0"
DATE: APRIL 28, 1932.

FILE NAME = c:\pwwork\p\1107\1107\JOB\0148931\111150	USER NAME = midyjo as.dgn	DESIGNED -	REVISED -	STATE OF ILLINOIS DEPARTMENT OF TRANSPORTATION	RUBY STREET OVER DES PLAINES RIVER SN 099-9901		F.A.P. RTE. 112	SECTION M-BDR-1	COUNTY WILL	TOTAL SHEETS 66	SHEET NO. 28	
PLOT SCALE = 1/8" = 1' IN.		CHECKED -	REVISED -		SCALE:	SHEET NO. 19 OF 30 SHEETS	STA.	TO STA.		ILLINOIS FED. AID PROJECT		
PLOT DATE = 6/27/2009		DATE -	REVISED -		CONTRACT NO. 62714							
CONTRACT NO. 62714												