

FOR INFORMATION ONLY

For machinery details see dugs. #4, 4.4.

GENERAL NOTES:

Rivets $\frac{3}{4}$ " except as noted.
 Open holes $\frac{1}{2}$ " except as noted.
 Holes marked "R" are to be reamed for $\frac{1}{2}$ " turned bolts with supports assembled in the shop and parts match marked. Bolts to have light driving fit.
 All holes for bolts attaching machinery to the supports are to be sub-drilled and reamed with the supports completely bolted up with turned bolts and with machinery beds completely assembled in place in the shop. Machinery and supports must be match marked one with respect to the other.
 Painting: Surfaces which are to be embedded in concrete are not to be painted or oiled.

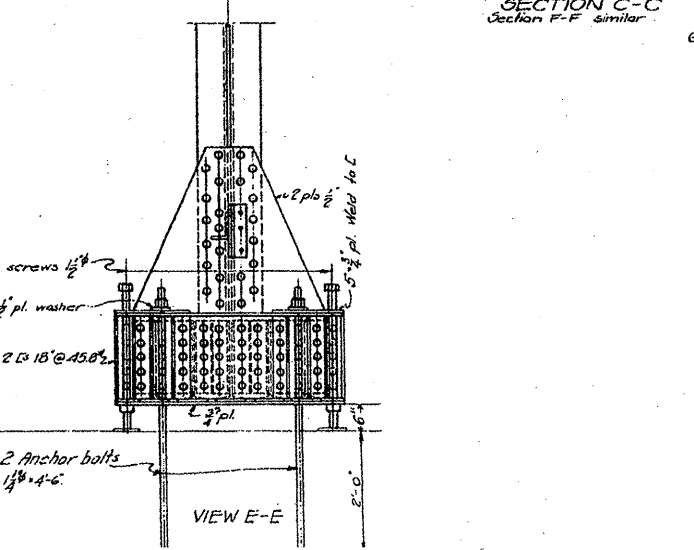
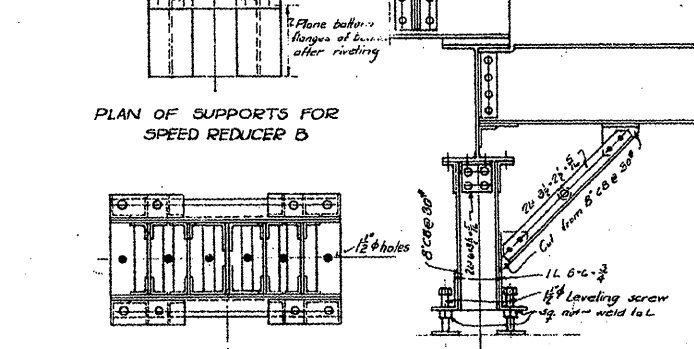
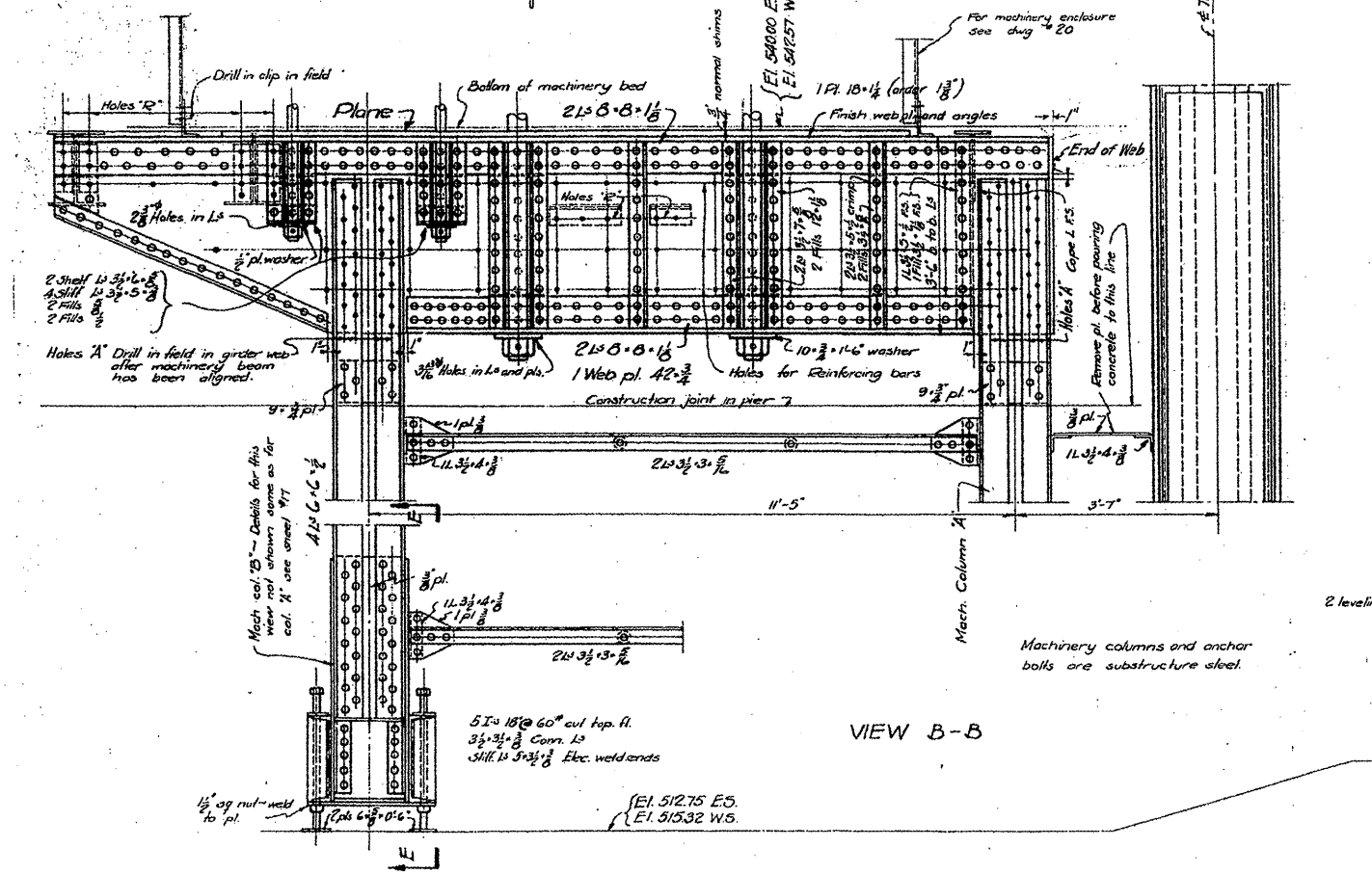
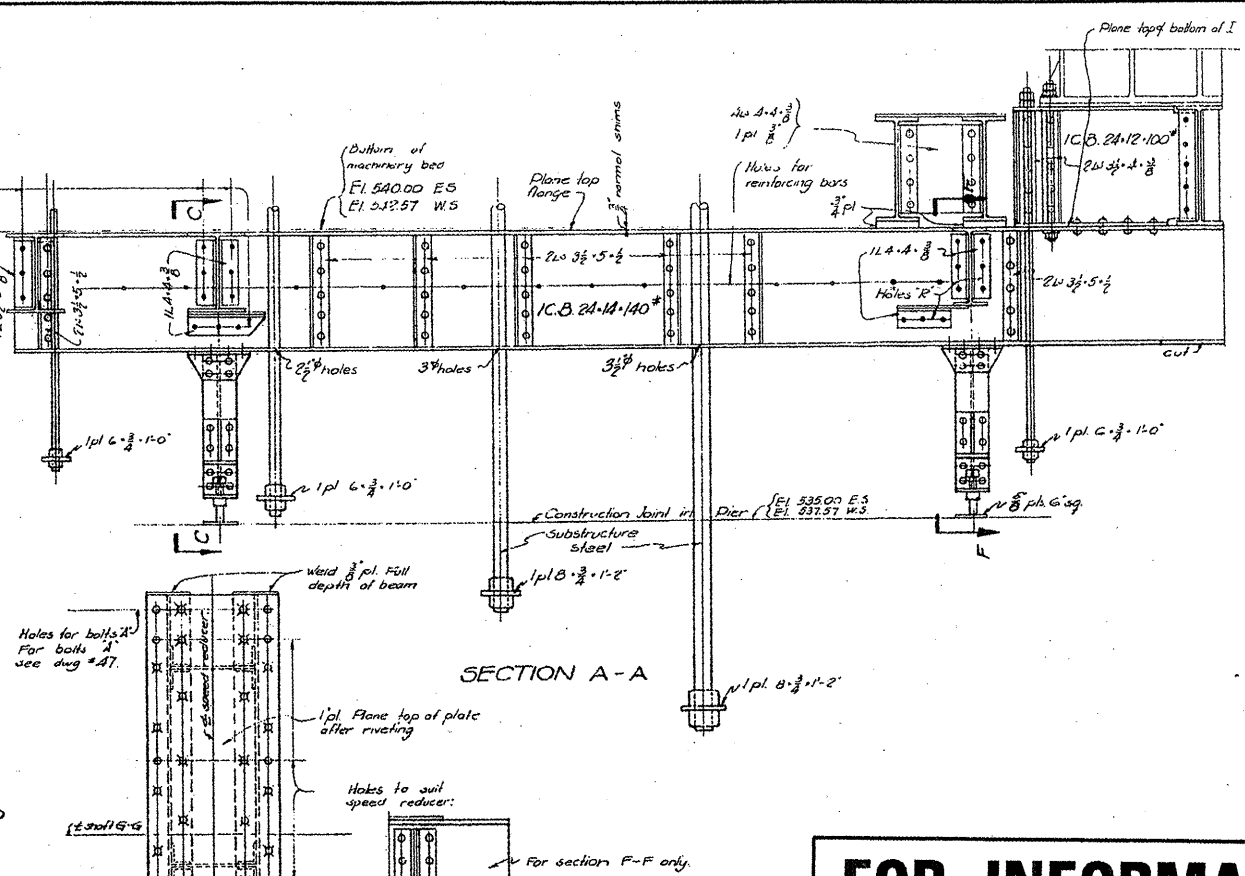
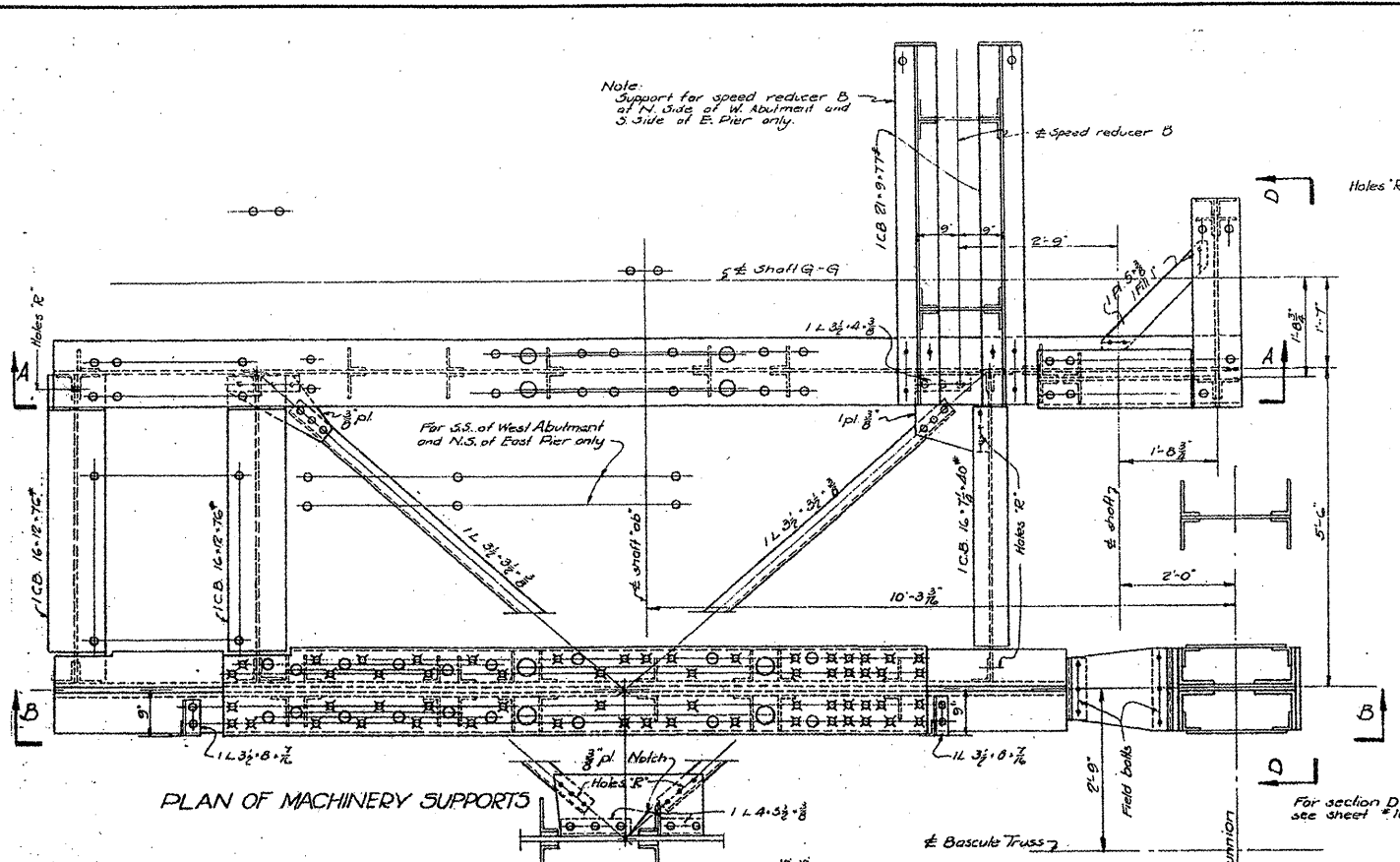
**MACHINERY SUPPORTS
 DOUBLE LEAF TRUNNION BASCULE BRIDGE
 OVER
 THE ILLINOIS WATERWAY
 AT
 RUBY ST. JOLIET, ILL.**

DESIGNED BY
**THE SCHERZER ROLLING LIFT BRIDGE CO.
 MONADNOCK BLOCK, CHICAGO, ILL.**

DRAWN BY ALR.S.
 TRACED BY A.D.
 CHECKED BY T.E.

SCALE: $\frac{1}{4}$ " = 1'-0"
 DATE: MAR. 17, 1933

SHEET NO. 23 OF 30



FILE NAME =	USER NAME = midyjo
cd:\pwork\PIWIDGT\MIDYJA\0148931\111508	midyjo.dgn
PLOT SCALE = 1/32" = 1' - 0"	
PLOT DATE = 6/27/2009	

DESIGNED -	REVISED -
DRAWN -	REVISED -
CHECKED -	REVISED -
DATE -	REVISED -

**STATE OF ILLINOIS
 DEPARTMENT OF TRANSPORTATION**

**RUBY STREET OVER DES PLAINES RIVER
 SN 099-9901**

SCALE: SHEET NO. 23 OF 30 SHEETS STA. TO STA.

F.A.P. R.T.E. 112	SECTION M-BDR-1	COUNTY WILL	TOTAL SHEETS 66	SHEET NO. 32
			CONTRACT NO. 62714	
ILLINOIS FED. AID PROJECT				